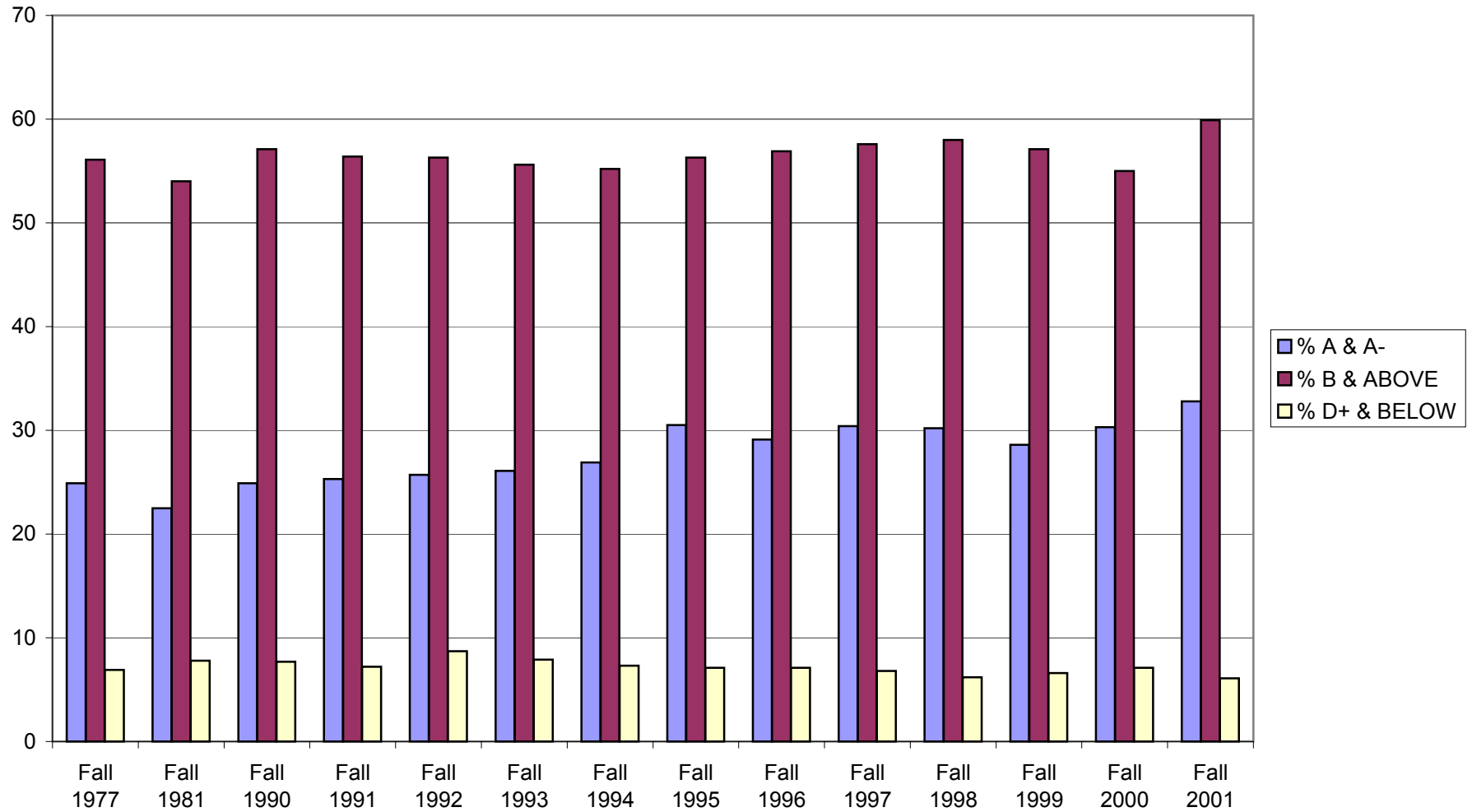
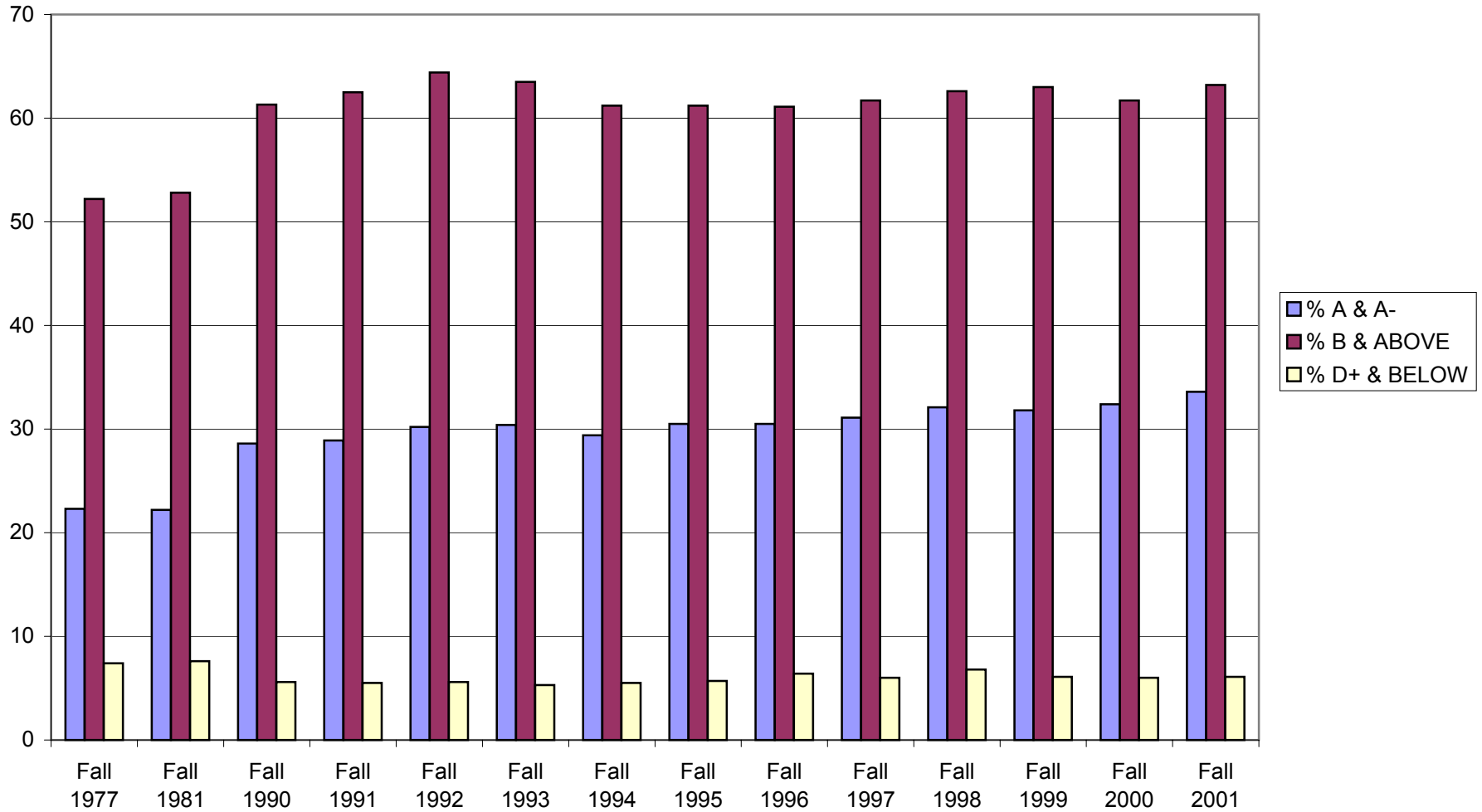


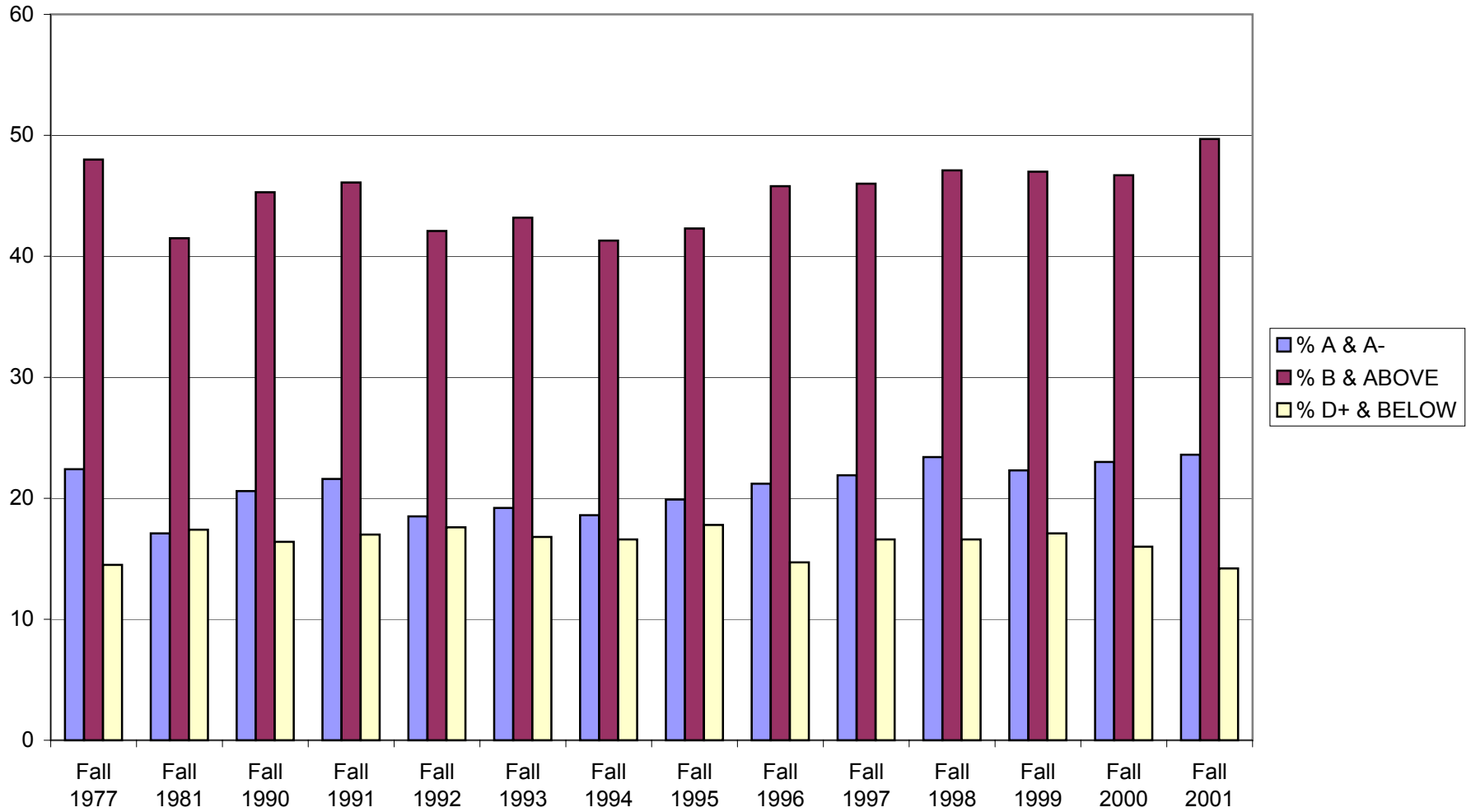
Registrar's Office 2/14/02
Fall Grade Distribution
College of Life Sciences and Agriculture



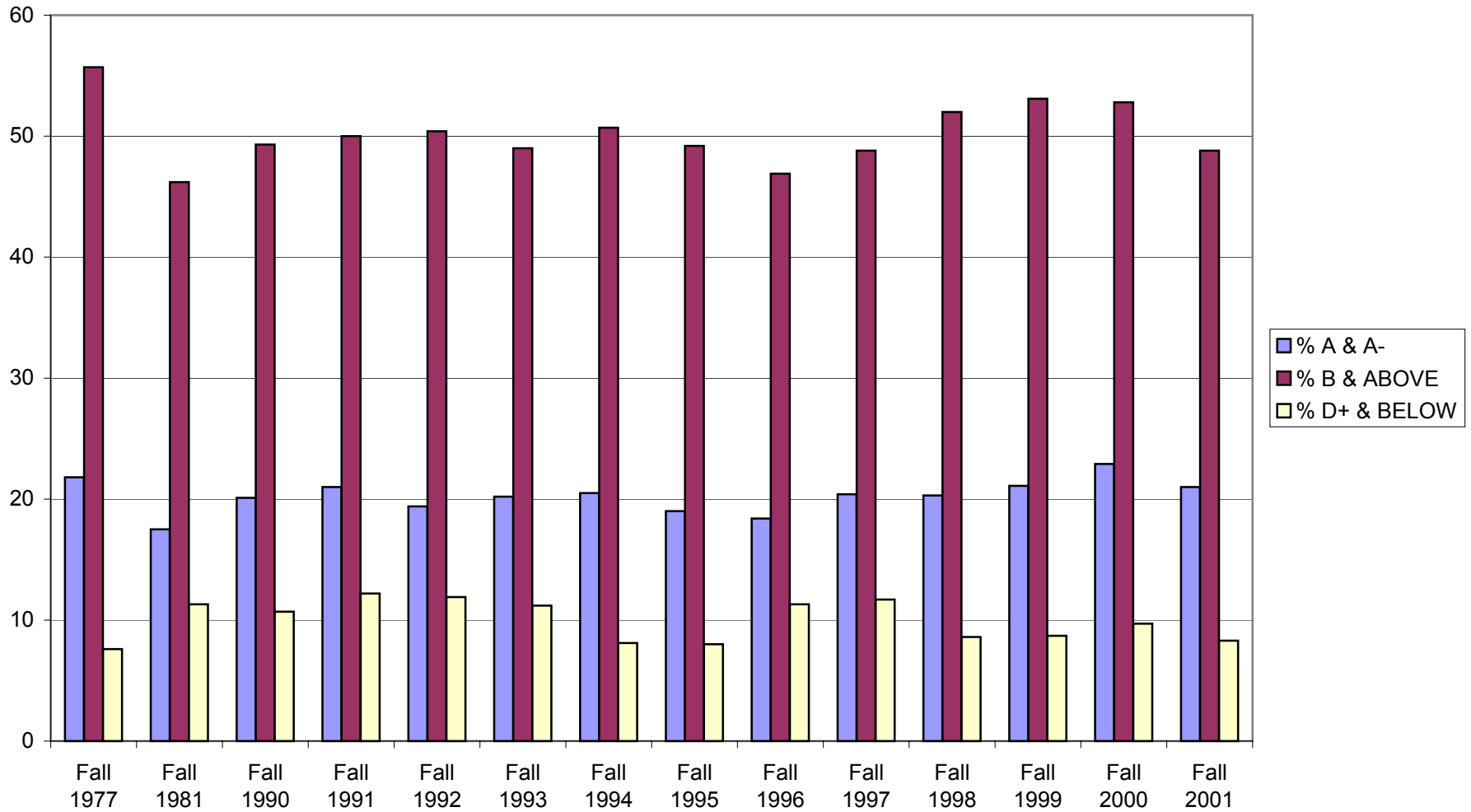
Registrar's Office 2/14/02
Fall Grade Distribution
College of Liberal Arts



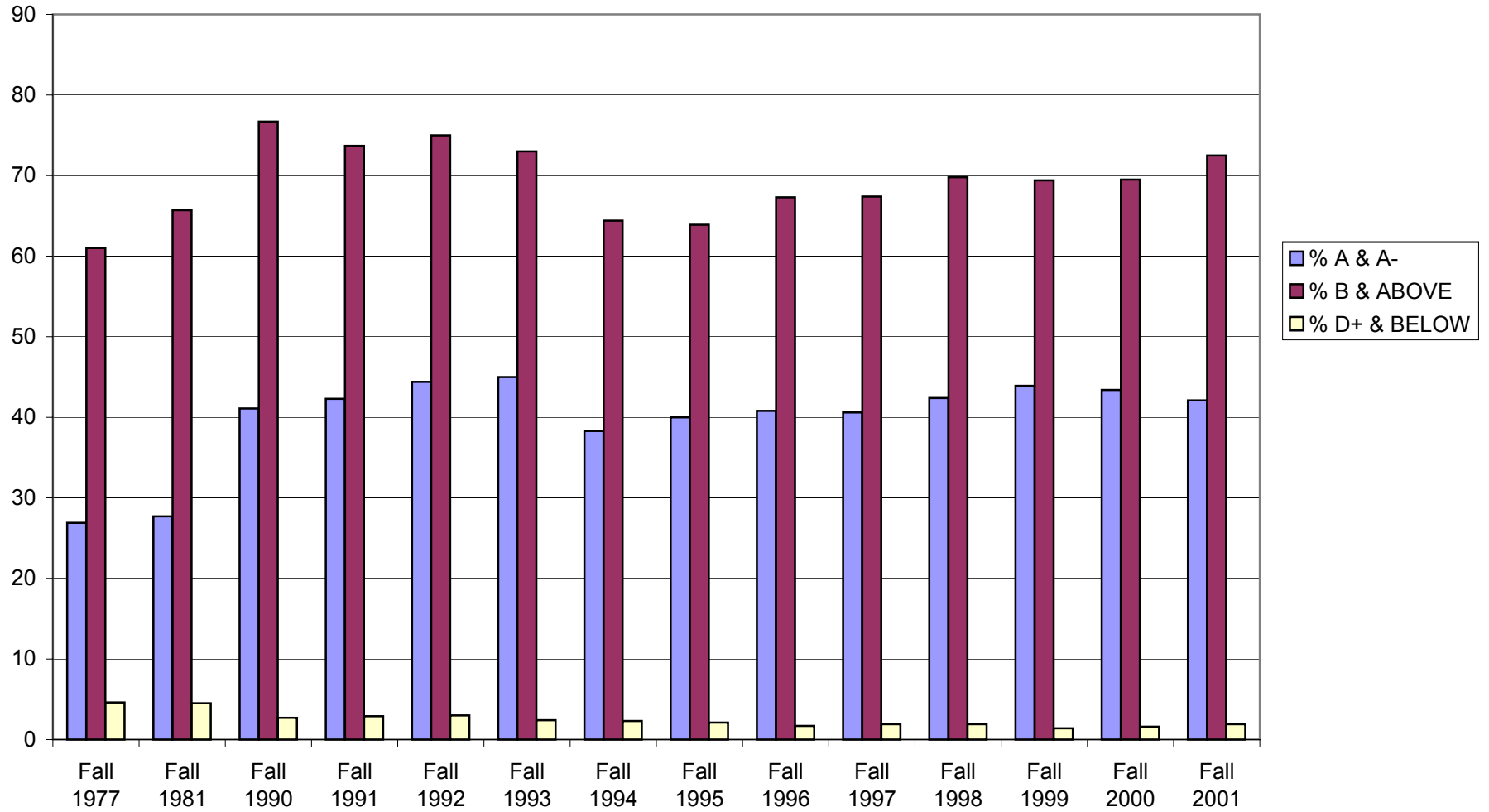
Registrar's Office 2/14/02
Fall Grade Distribution
College of Engineering & Physical Sciences



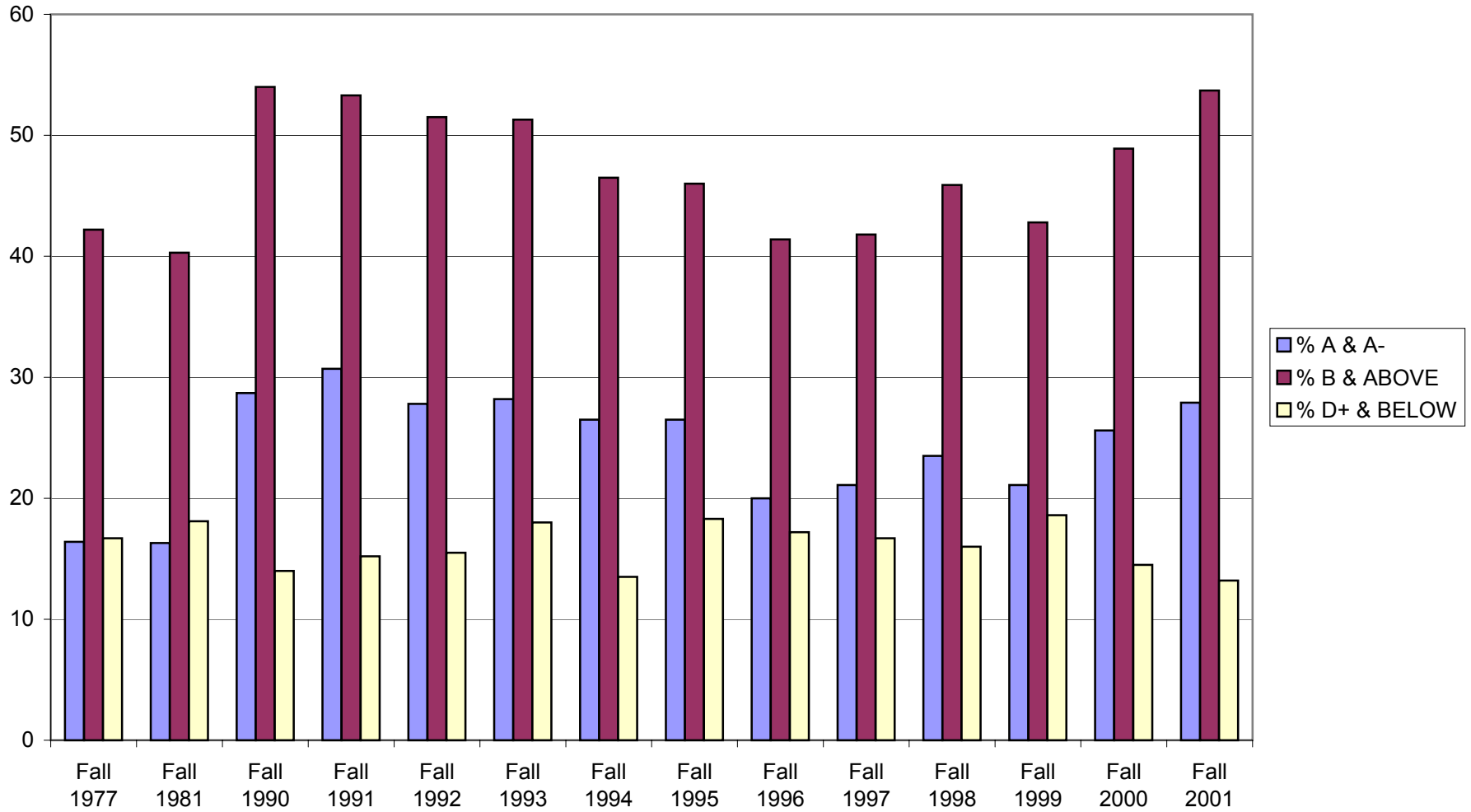
Registrar's Office
Fall Grade Distribution 2/14/02
Whittemore School of Business & Economics



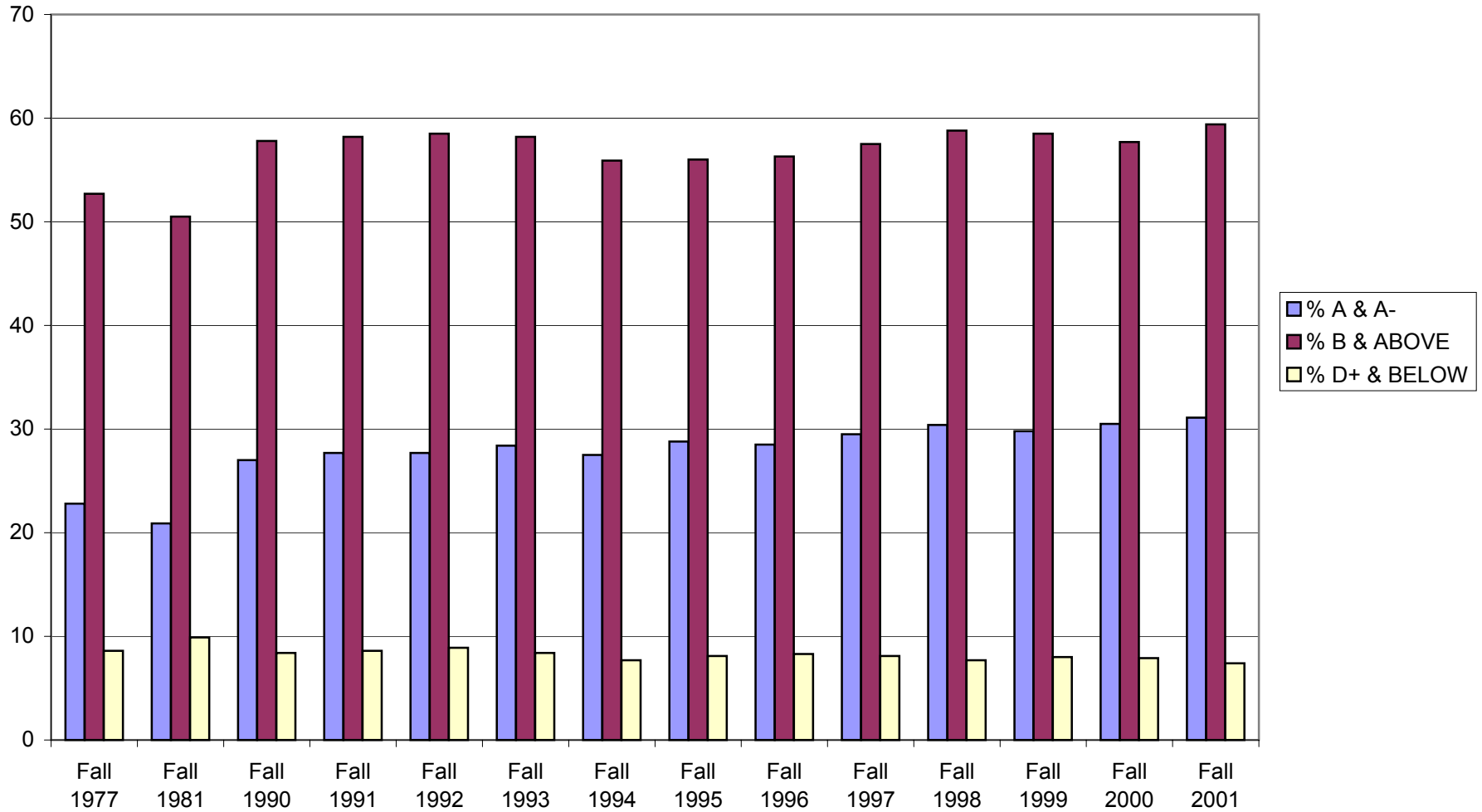
Registrar's Office 2/14/02
Fall Grade Distribution
School of Health & Human Services



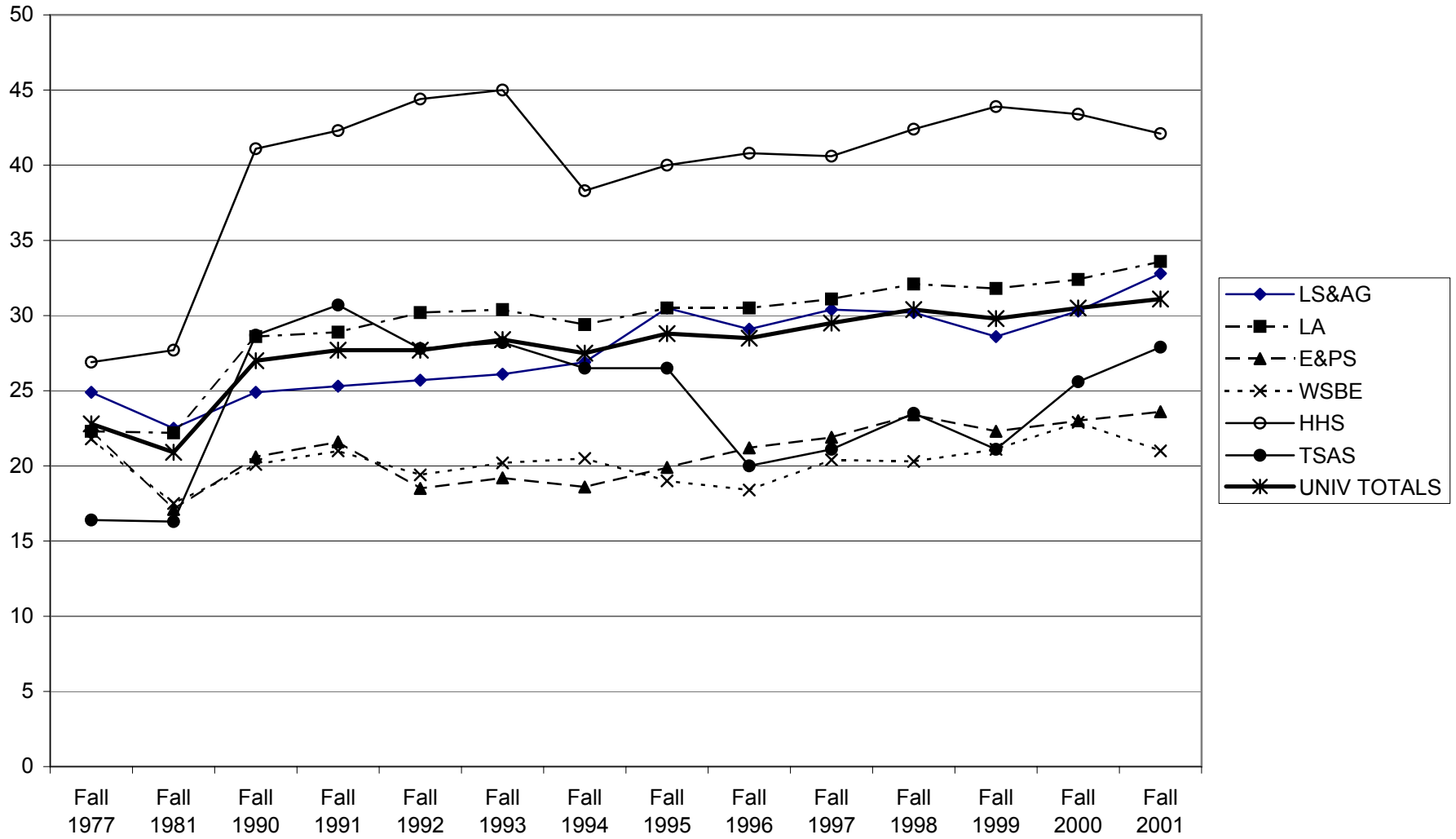
Registrar's Office 2/14/02
Fall Grade Distribution
Thompson School of Applied Science



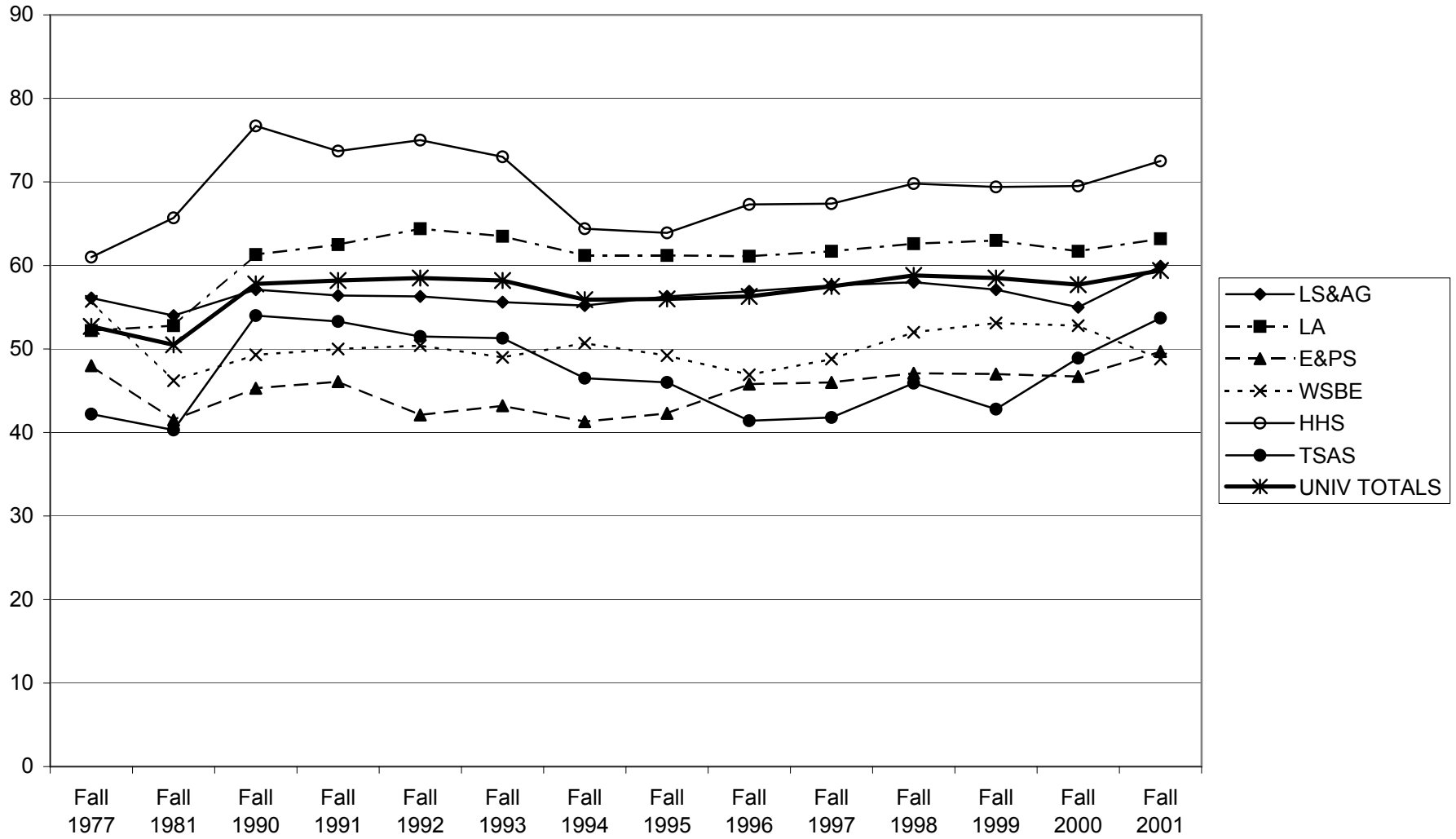
Registrar's Office 2/14/02
Fall Grade Distribution
University Totals



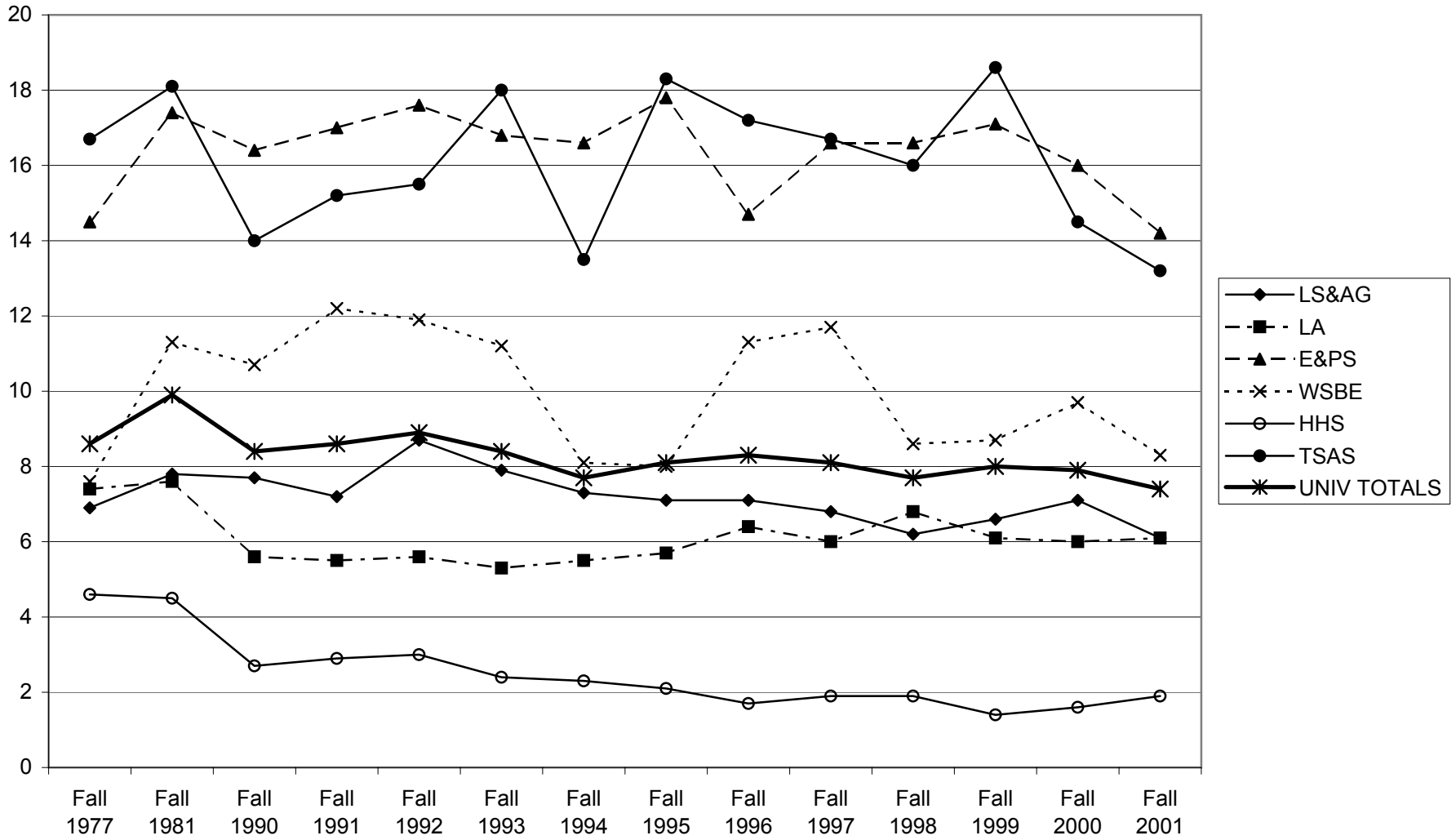
Registrar's Office 2/14/02
Fall % of Grades A & A-



Registrar's Office 2/14/02
 Fall % of Grades B and Above



Registrar's Office 2/14/02
Fall % of Grades D+ and Below



LS&AG	% A & A-	% B & ABOVE	% D+ & BELOW
Fall 1977	24.9	56.1	6.9
Fall 1981	22.5	54	7.8
Fall 1990	24.9	57.1	7.7
Fall 1991	25.3	56.4	7.2
Fall 1992	25.7	56.3	8.7
Fall 1993	26.1	55.6	7.9
Fall 1994	26.9	55.2	7.3
Fall 1995	30.5	56.3	7.1
Fall 1996	29.1	56.9	7.1
Fall 1997	30.4	57.6	6.8
Fall 1998	30.2	58	6.2
Fall 1999	28.6	57.1	6.6
Fall 2000	30.3	55	7.1
Fall 2001	32.8	59.9	6.1

LA	% A & A-	% B & ABOVE	% D+ & BELOW
Fall 1977	22.3	52.2	7.4
Fall 1981	22.2	52.8	7.6
Fall 1990	28.6	61.3	5.6
Fall 1991	28.9	62.5	5.5
Fall 1992	30.2	64.4	5.6
Fall 1993	30.4	63.5	5.3
Fall 1994	29.4	61.2	5.5
Fall 1995	30.5	61.2	5.7
Fall 1996	30.5	61.1	6.4
Fall 1997	31.1	61.7	6
Fall 1998	32.1	62.6	6.8
Fall 1999	31.8	63	6.1
Fall 2000	32.4	61.7	6
Fall 2001	33.6	63.2	6.1

E&PS	% A & A-	% B & ABOVE	% D+ & BELOW
Fall 1977	22.4	48	14.5
Fall 1981	17.1	41.5	17.4
Fall 1990	20.6	45.3	16.4
Fall 1991	21.6	46.1	17
Fall 1992	18.5	42.1	17.6
Fall 1993	19.2	43.2	16.8
Fall 1994	18.6	41.3	16.6
Fall 1995	19.9	42.3	17.8
Fall 1996	21.2	45.8	14.7
Fall 1997	21.9	46	16.6
Fall 1998	23.4	47.1	16.6
Fall 1999	22.3	47	17.1
Fall 2000	23	46.7	16
Fall 2001	23.6	49.7	14.2

WSBE	% A & A-	% B & ABOVE	% D+ & BELOW
Fall 1977	21.8	55.7	7.6
Fall 1981	17.5	46.2	11.3
Fall 1990	20.1	49.3	10.7
Fall 1991	21	50	12.2
Fall 1992	19.4	50.4	11.9
Fall 1993	20.2	49	11.2
Fall 1994	20.5	50.7	8.1
Fall 1995	19	49.2	8
Fall 1996	18.4	46.9	11.3
Fall 1997	20.4	48.8	11.7
Fall 1998	20.3	52	8.6
Fall 1999	21.1	53.1	8.7
Fall 2000	22.9	52.8	9.7
Fall 2001	21	48.8	8.3

HHS	% A & A-	% B & ABOVE	% D+ & BELOW
Fall 1977	26.9	61	4.6
Fall 1981	27.7	65.7	4.5
Fall 1990	41.1	76.7	2.7
Fall 1991	42.3	73.7	2.9
Fall 1992	44.4	75	3
Fall 1993	45	73	2.4
Fall 1994	38.3	64.4	2.3
Fall 1995	40	63.9	2.1
Fall 1996	40.8	67.3	1.7
Fall 1997	40.6	67.4	1.9
Fall 1998	42.4	69.8	1.9
Fall 1999	43.9	69.4	1.4
Fall 2000	43.4	69.5	1.6
Fall 2001	42.1	72.5	1.9

TSAS	% A & A-	% B & ABOVE	% D+ & BELOW
Fall 1977	16.4	42.2	16.7
Fall 1981	16.3	40.3	18.1
Fall 1990	28.7	54	14
Fall 1991	30.7	53.3	15.2
Fall 1992	27.8	51.5	15.5
Fall 1993	28.2	51.3	18
Fall 1994	26.5	46.5	13.5
Fall 1995	26.5	46	18.3
Fall 1996	20	41.4	17.2
Fall 1997	21.1	41.8	16.7
Fall 1998	23.5	45.9	16
Fall 1999	21.1	42.8	18.6
Fall 2000	25.6	48.9	14.5
Fall 2001	27.9	53.7	13.2

UNIV TOTAL	% A & A-	% B & ABOVE	% D+ & BELOW
Fall 1977	22.8	52.7	8.6
Fall 1981	20.9	50.5	9.9
Fall 1990	27	57.8	8.4
Fall 1991	27.7	58.2	8.6
Fall 1992	27.7	58.5	8.9
Fall 1993	28.4	58.2	8.4
Fall 1994	27.5	55.9	7.7
Fall 1995	28.8	56	8.1
Fall 1996	28.5	56.3	8.3
Fall 1997	29.5	57.5	8.1
Fall 1998	30.4	58.8	7.7
Fall 1999	29.8	58.5	8
Fall 2000	30.5	57.7	7.9
Fall 2001	31.1	59.4	7.4

% A & A-	Fall 1977	Fall 1981	Fall 1990	Fall 1991	Fall 1992	Fall 1993	Fall 1994
LS&AG	24.9	22.5	24.9	25.3	25.7	26.1	26.9
LA	22.3	22.2	28.6	28.9	30.2	30.4	29.4
E&PS	22.4	17.1	20.6	21.6	18.5	19.2	18.6
WSBE	21.8	17.5	20.1	21	19.4	20.2	20.5
HHS	26.9	27.7	41.1	42.3	44.4	45	38.3
TSAS	16.4	16.3	28.7	30.7	27.8	28.2	26.5
UNIV TOTAL	22.8	20.9	27	27.7	27.7	28.4	27.5

% B & ABOVE	Fall 1977	Fall 1981	Fall 1990	Fall 1991	Fall 1992	Fall 1993	Fall 1994
LS&AG	56.1	54	57.1	56.4	56.3	55.6	55.2
LA	52.2	52.8	61.3	62.5	64.4	63.5	61.2
E&PS	48	41.5	45.3	46.1	42.1	43.2	41.3
WSBE	55.7	46.2	49.3	50	50.4	49	50.7
HHS	61	65.7	76.7	73.7	75	73	64.4
TSAS	42.2	40.3	54	53.3	51.5	51.3	46.5
UNIV TOTAL	52.7	50.5	57.8	58.2	58.5	58.2	55.9

% D+ & BELOW	Fall 1977	Fall 1981	Fall 1990	Fall 1991	Fall 1992	Fall 1993	Fall 1994
LS&AG	6.9	7.8	7.7	7.2	8.7	7.9	7.3
LA	7.4	7.6	5.6	5.5	5.6	5.3	5.5
E&PS	14.5	17.4	16.4	17	17.6	16.8	16.6
WSBE	7.6	11.3	10.7	12.2	11.9	11.2	8.1
HHS	4.6	4.5	2.7	2.9	3	2.4	2.3
TSAS	16.7	18.1	14	15.2	15.5	18	13.5
UNIV TOTAL	8.6	9.9	8.4	8.6	8.9	8.4	7.7

Fall 1995	Fall 1996	Fall 1997	Fall 1998	Fall 1999	Fall 2000	Fall 2001
30.5	29.1	30.4	30.2	28.6	30.3	32.8
30.5	30.5	31.1	32.1	31.8	32.4	33.6
19.9	21.2	21.9	23.4	22.3	23	23.6
19	18.4	20.4	20.3	21.1	22.9	21
40	40.8	40.6	42.4	43.9	43.4	42.1
26.5	20	21.1	23.5	21.1	25.6	27.9
28.8	28.5	29.5	30.4	29.8	30.5	31.1

Fall 1995	Fall 1996	Fall 1997	Fall 1998	Fall 1999	Fall 2000	Fall 2001
56.3	56.9	57.6	58	57.1	55	59.9
61.2	61.1	61.7	62.6	63	61.7	63.2
42.3	45.8	46	47.1	47	46.7	49.7
49.2	46.9	48.8	52	53.1	52.8	48.8
63.9	67.3	67.4	69.8	69.4	69.5	72.5
46	41.4	41.8	45.9	42.8	48.9	53.7
56	56.3	57.5	58.8	58.5	57.7	59.4

Fall 1995	Fall 1996	Fall 1997	Fall 1998	Fall 1999	Fall 2000	Fall 2001
7.1	7.1	6.8	6.2	6.6	7.1	6.1
5.7	6.4	6	6.8	6.1	6	6.1
17.8	14.7	16.6	16.6	17.1	16	14.2
8	11.3	11.7	8.6	8.7	9.7	8.3
2.1	1.7	1.9	1.9	1.4	1.6	1.9
18.3	17.2	16.7	16	18.6	14.5	13.2
8.1	8.3	8.1	7.7	8	7.9	7.4

LS&AG	% A & A-	% B & ABOVE	% D+ & BELOW
Fall 1977	24.9	56.1	6.9
Fall 1981	22.5	54	7.8
Fall 1990	24.9	57.1	7.7
Fall 1991	25.3	56.4	7.2
Fall 1992	25.7	56.3	8.7
Fall 1993	26.1	55.6	7.9
Fall 1994	26.9	55.2	7.3
Fall 1995	30.5	56.3	7.1
Fall 1996	29.1	56.9	7.1
Fall 1997	30.4	57.6	6.8
Fall 1998	30.2	58	6.2
Fall 1999	28.6	57.1	6.6
Fall 2000	30.3	55	7.1

LA	% A & A-	% B & ABOVE	% D+ & BELOW
Fall 1977	22.3	52.2	7.4
Fall 1981	22.2	52.8	7.6
Fall 1990	28.6	61.3	5.6
Fall 1991	28.9	62.5	5.5
Fall 1992	30.2	64.4	5.6
Fall 1993	30.4	63.5	5.3
Fall 1994	29.4	61.2	5.5
Fall 1995	30.5	61.2	5.7
Fall 1996	30.5	61.1	6.4
Fall 1997	31.1	61.7	6
Fall 1998	32.1	62.6	6.8
Fall 1999	31.8	63	6.1
Fall 2000	32.4	61.7	6

E&PS	% A & A-	% B & ABOVE	% D+ & BELOW
Fall 1977	22.4	48	14.5
Fall 1981	17.1	41.5	17.4
Fall 1990	20.6	45.3	16.4
Fall 1991	21.6	46.1	17
Fall 1992	18.5	42.1	17.6
Fall 1993	19.2	43.2	16.8
Fall 1994	18.6	41.3	16.6
Fall 1995	19.9	42.3	17.8
Fall 1996	21.2	45.8	14.7
Fall 1997	21.9	46	16.6
Fall 1998	23.4	47.1	16.6
Fall 1999	22.3	47	17.1
Fall 2000	23	46.7	16

WSBE	% A & A-	% B & ABOVE	% D+ & BELOW
Fall 1977	21.8	55.7	7.6
Fall 1981	17.5	46.2	11.3
Fall 1990	20.1	49.3	10.7
Fall 1991	21	50	12.2
Fall 1992	19.4	50.4	11.9
Fall 1993	20.2	49	11.2
Fall 1994	20.5	50.7	8.1
Fall 1995	19	49.2	8
Fall 1996	18.4	46.9	11.3
Fall 1997	20.4	48.8	11.7
Fall 1998	20.3	52	8.6
Fall 1999	21.1	53.1	8.7
Fall 2000	22.9	52.8	9.7

HHS	% A & A-	% B & ABOVE	% D+ & BELOW
Fall 1977	26.9	61	4.6
Fall 1981	27.7	65.7	4.5
Fall 1990	41.1	76.7	2.7
Fall 1991	42.3	73.7	2.9
Fall 1992	44.4	75	3
Fall 1993	45	73	2.4
Fall 1994	38.3	64.4	2.3
Fall 1995	40	63.9	2.1
Fall 1996	40.8	67.3	1.7
Fall 1997	40.6	67.4	1.9
Fall 1998	42.4	69.8	1.9
Fall 1999	43.9	69.4	1.4
Fall 2000	43.4	69.5	1.6

TSAS	% A & A-	% B & ABOVE	% D+ & BELOW
Fall 1977	16.4	42.2	16.7
Fall 1981	16.3	40.3	18.1
Fall 1990	28.7	54	14
Fall 1991	30.7	53.3	15.2
Fall 1992	27.8	51.5	15.5
Fall 1993	28.2	51.3	18
Fall 1994	26.5	46.5	13.5
Fall 1995	26.5	46	18.3
Fall 1996	20	41.4	17.2
Fall 1997	21.1	41.8	16.7
Fall 1998	23.5	45.9	16
Fall 1999	21.1	42.8	18.6
Fall 2000	25.6	48.9	14.5

UNIV TOT	% A & A-	% B & ABOVE	% D+ & BELOW
Fall 1977	22.8	52.7	8.6
Fall 1981	20.9	50.5	9.9
Fall 1990	27	57.8	8.4
Fall 1991	27.7	58.2	8.6
Fall 1992	27.7	58.5	8.9
Fall 1993	28.4	58.2	8.4
Fall 1994	27.5	55.9	7.7
Fall 1995	28.8	56	8.1
Fall 1996	28.5	56.3	8.3
Fall 1997	29.5	57.5	8.1
Fall 1998	30.4	58.8	7.7
Fall 1999	29.8	58.5	8
Fall 2000	30.5	57.7	7.9