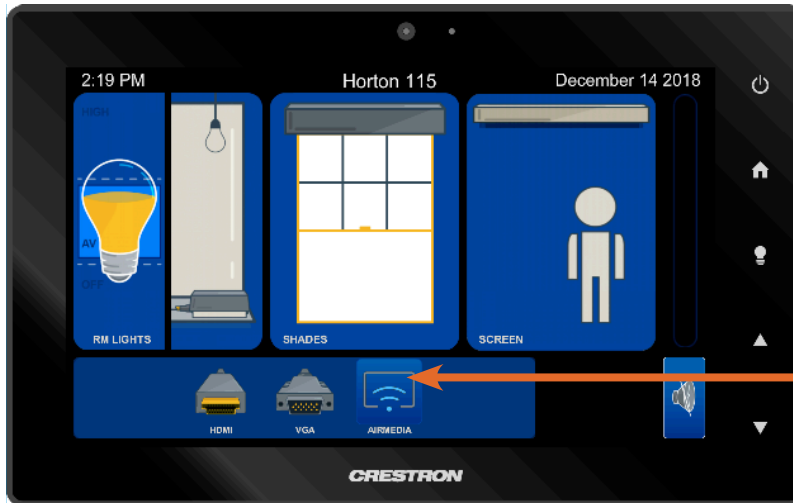




Crestron AirMedia®

Connect a Windows Device via the AirMedia®



1. Turn on your Windows Device and connect to the university WIFI

2. Locate the Crestron AirMedia® touch panel in your classroom. Touch the display gently to start.

3. Select 'AirMedia' by pressing on the touch panel



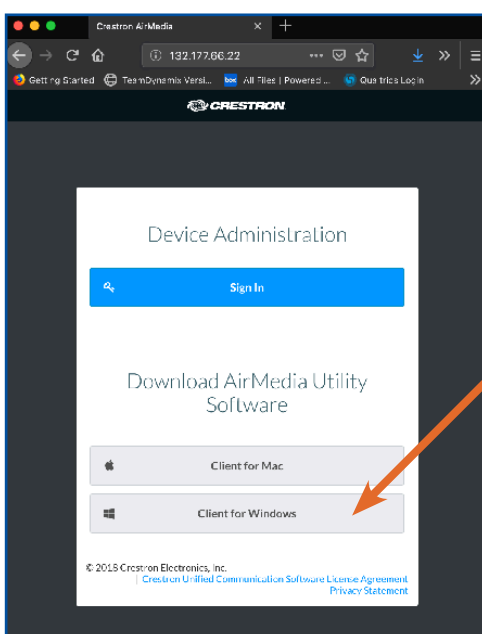
4. Choose mode 'Audiovisual' for AirMedia by pressing on the touch panel



5. Projector will begin warming up, while the projection screen, classroom blinds and lights will lower automatically

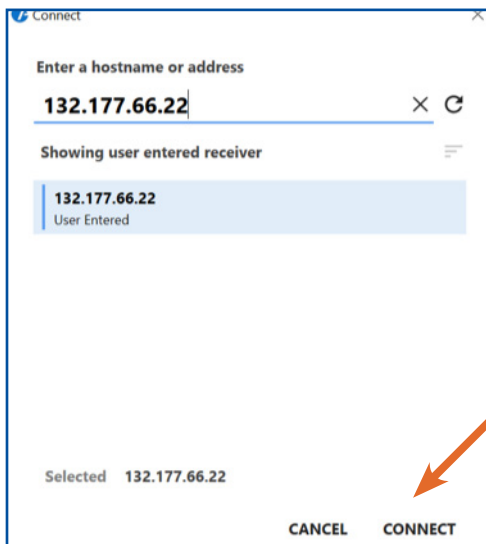


6. Open a webpage on your Windows Device and go to the URL provided on touch panel.

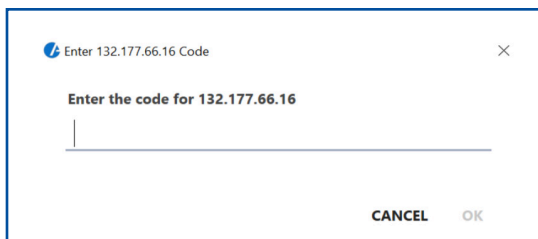


7. Select the 'Client for Windows' AirMedia Utility Software Download, if this is your first time. Otherwise open AirMedia from your Window's Applications.

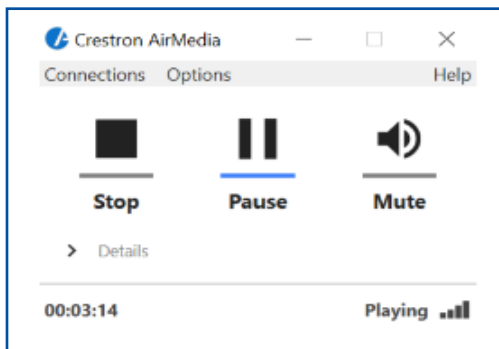
7a. You can download the AirMedia® software to your Windows Device prior to classroom use [HERE](#)



8. Open AirMedia software; enter the URL provided on the touch panel and projection screen, then select 'Connect'



9. A password dialog box will generate. Enter the 4 digit passcode provided on both the touch panel display and projection screen.



10. A dialog box will appear in your Windows desktop that allows you to 'Stop' and 'Start' the AirMedia connection.



13. You should now be connected wirelessly via the AirMedia and projecting to the screen.



14. Touch panel will appear with the lock open during your use.



15. When you are finished presenting please press the power button on the touch panel display. This will put the projector in cool down mode, lift the blinds and raise the lights.

AV TECH TIP #1: Volume control for applications like YouTube, QuickTime, Windows Media Player and others will need to be adjusted within the application's sound bar.