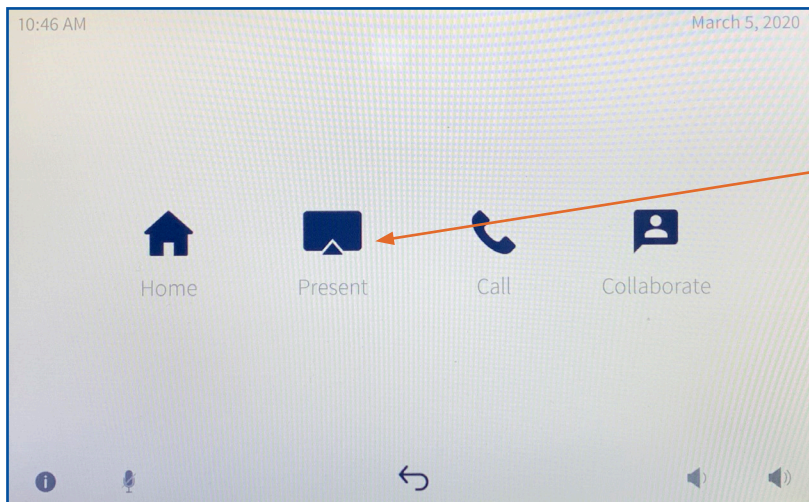




Crestron Mercury AirMedia®

Connect a Windows Device via the Mercury AirMedia®



Crestron Mercury

Select the *Present* Icon

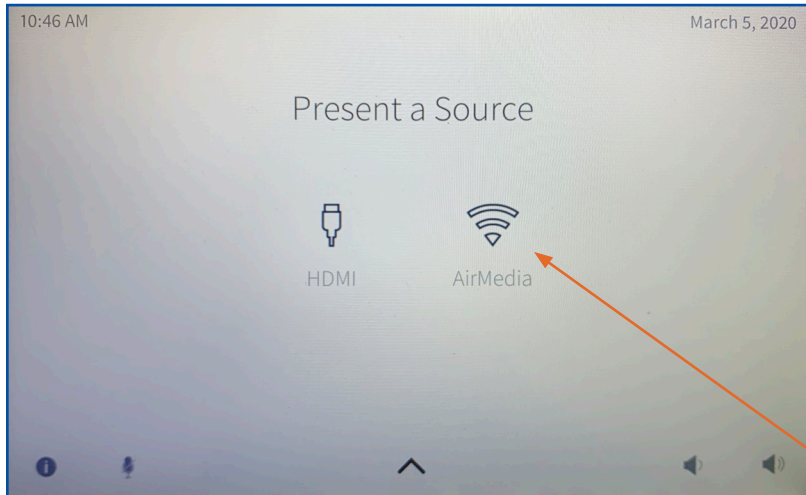
To present from your Windows Device via the HDMI:

1. Turn on your laptop, connect to the university WIFI, and attach laptop adapter if needed.
2. Locate the Crestron Mercury touch panel and corresponding *HDMI cable*
3. Connect the *HDMI cable* to your laptop or laptop adapter.



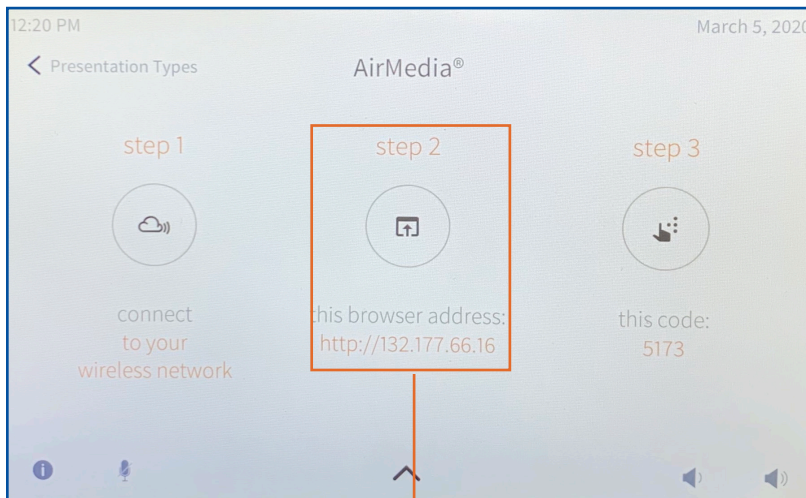
HDMI

Crestron Mercury will connect automatically; you DO NOT need to select HDMI on the touch panel prior to connecting the HDMI cable.

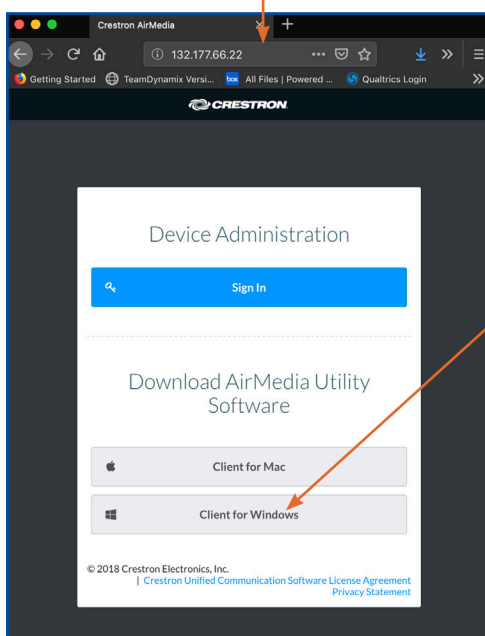


To present wireless via the AirMedia®

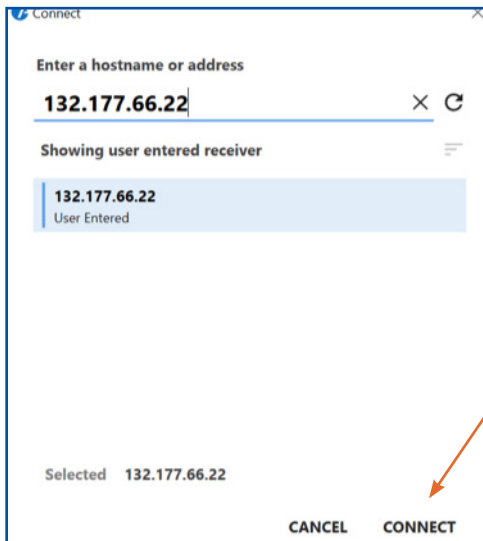
1. Locate the touch panel in the room.
2. Make sure you are connected to the University WIFI
3. Select 'AirMedia'



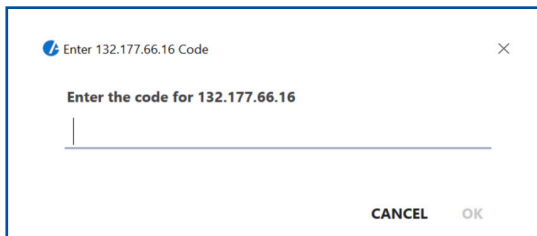
4. Open a web page and enter the 'Browser Address' provided on the touch panel and/or screen display



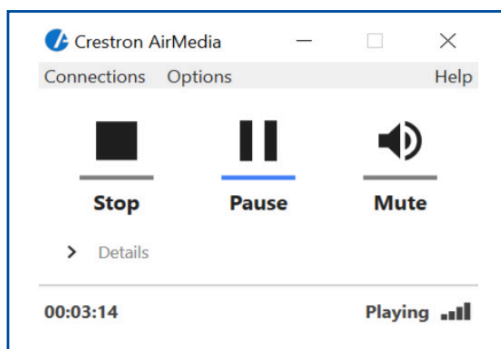
7. Select the 'Client for Windows' AirMedia Utility Software Download



8. Open *AirMedia* software; enter the URL (browser address) provided on the touch panel and/or screen, then select 'Connect'



9. A password dialog box will generate. Enter the 4 digit code provided on both the touch panel display and screen.



10. A dialog box will appear in your Windows desktop that allows you to 'Stop' and 'Start' the *AirMedia*® connection. You should now be presenting via the wireless through *AirMedia*®



Laptop Troubleshooting

If your device requires a display adapter to connect to the provided HDMI or VGA cable, connect the HDMI or VGA cable to the adapter *first, then* connect the adapter to your device. Select the HDMI or VGA source button on the AV touch panel.

If your classroom does not have an instructor podium, ensure HDMI or VGA cable is securely connected to the wall AV input plate.



Mac Laptop Troubleshooting

Video Mirroring

Mirroring displays the same image on each display.

Connect adapter to cable, then adapter to laptop.
From the Apple (🍏) menu, choose System Preferences.
Choose Displays. Click the Arrangement tab.
Enable (check) "Mirror Displays" in the bottom-left corner.

Changing Display Color Profile

Color Profiles control the color balance and contrast levels for a display.

From the Apple (🍏) menu, choose System Preferences.
Choose Displays. Click the Color tab.
Select a color profile from the list on the left. Click through the profiles and select the one that looks the best.



Windows Laptop Troubleshooting

Duplicating Displays

Duplicating displays the same image on each display.

Press and hold the Windows key + P. In the window that appears, select Duplicate.

Changing Display Color Profile

Color Profiles control the color balance and contrast levels for a display.

Click the Start button, and then click Control Panel.
In the search box, type color management, and then click Color Management.
Click the All Profiles tab, and then click Add. Locate and select the new color profile, and then click Add.
Click Close.

Audio Settings

It may be necessary to select the correct Sound Output settings.

From the Apple (🍏) menu, choose System Preferences.
Choose Sound. Click the Output tab.
If using HDMI, select HDMI as the output.
If using VGA, select Headphones as the output.

Change Display Resolution

Display resolution determines the size of text and objects on your screen.

Connect adapter to cable, then adapter to laptop.
From the Apple (🍏) menu, choose System Preferences.
Choose Displays. Click the Display tab.
Select the Scaled button.
Select the highest resolution in the list.

Audio Settings

It may be necessary to select the correct Sound Output settings.

Click the Start button, and then click Control Panel.
Click Sound Settings.
If using HDMI, select HDMI as the Sound Output.
If using VGA, select Headphones as the Sound Output.

Change Display Resolution

Display resolution determines the size of text and objects on your screen.

Right-click on the desktop and choose Screen Resolution. Set the screen resolution to the highest setting available.