

# Biological Sciences Initiative Spaulding Hall



Information Session – May 30, 2019 – 120 Spaulding

# Biological Sciences Initiative Spaulding Hall

INFORMATION SESSION – MAY 30, 2019 – 120 SPAULDING

## AGENDA

- Project Overview
- Project Schedule
- Temporary Space Accommodations
- Bldg and Site Access During Construction
- Communication Plan
- Questions/Answers

# Biological Sciences Initiative Spaulding Hall



View from Morse Circle



# Biological Sciences Initiative Spaulding Hall



New southwest entry on Academic Way

# Biological Sciences Initiative Spaulding Hall



Academic Way facade



# Biological Sciences Initiative Spaulding Hall



Academic Way facade

# Biological Sciences Initiative Spaulding Hall



Southeast entry on Academic Way



# Biological Sciences Initiative Spaulding Hall



Southeast entry on Academic Way



# Biological Sciences Initiative Spaulding Hall



Façade facing Paul Creative Arts Center

# Biological Sciences Initiative Spaulding Hall



Façade facing Paul Creative Arts Center

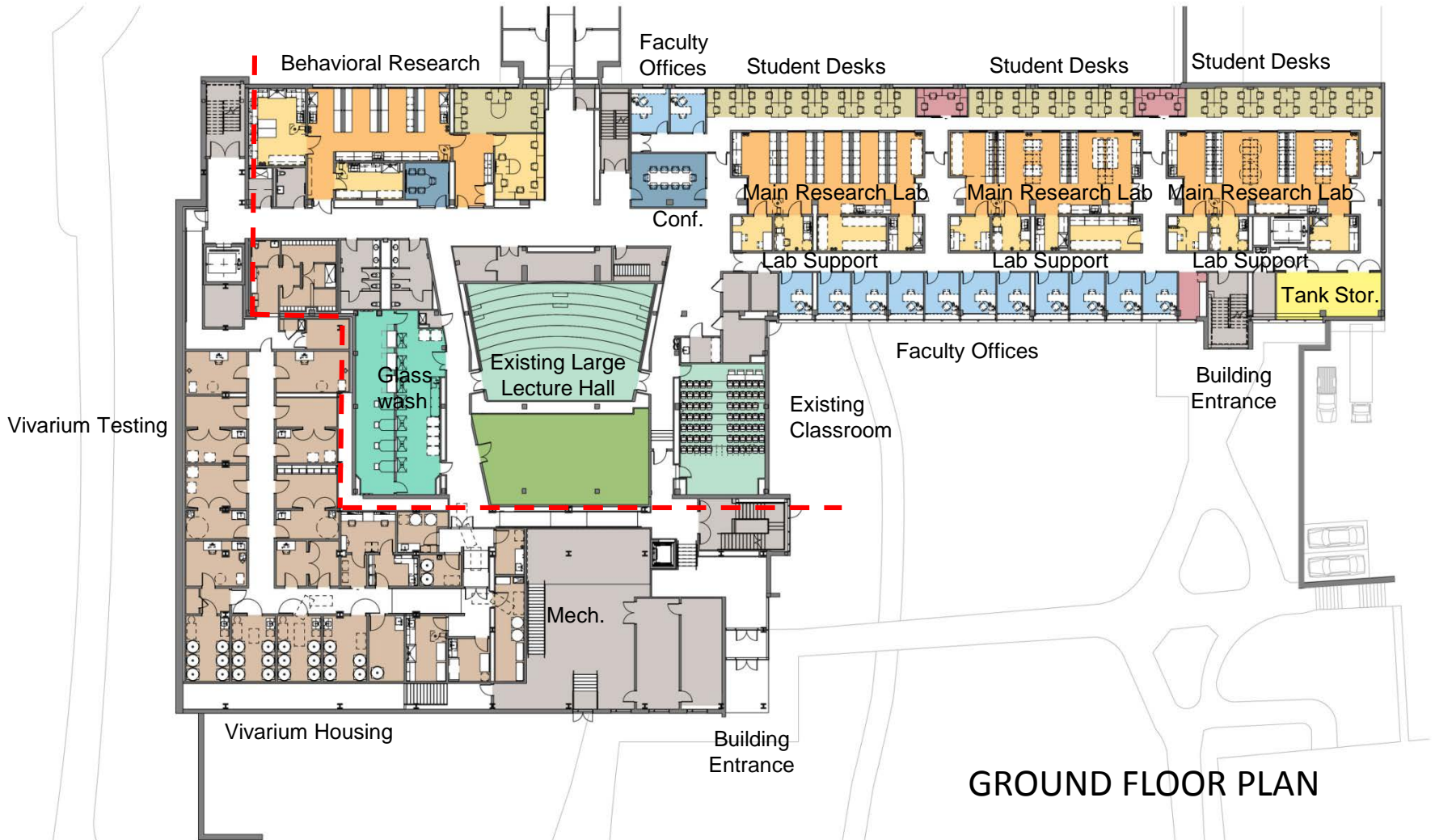


# Biological Sciences Initiative Spaulding Hall



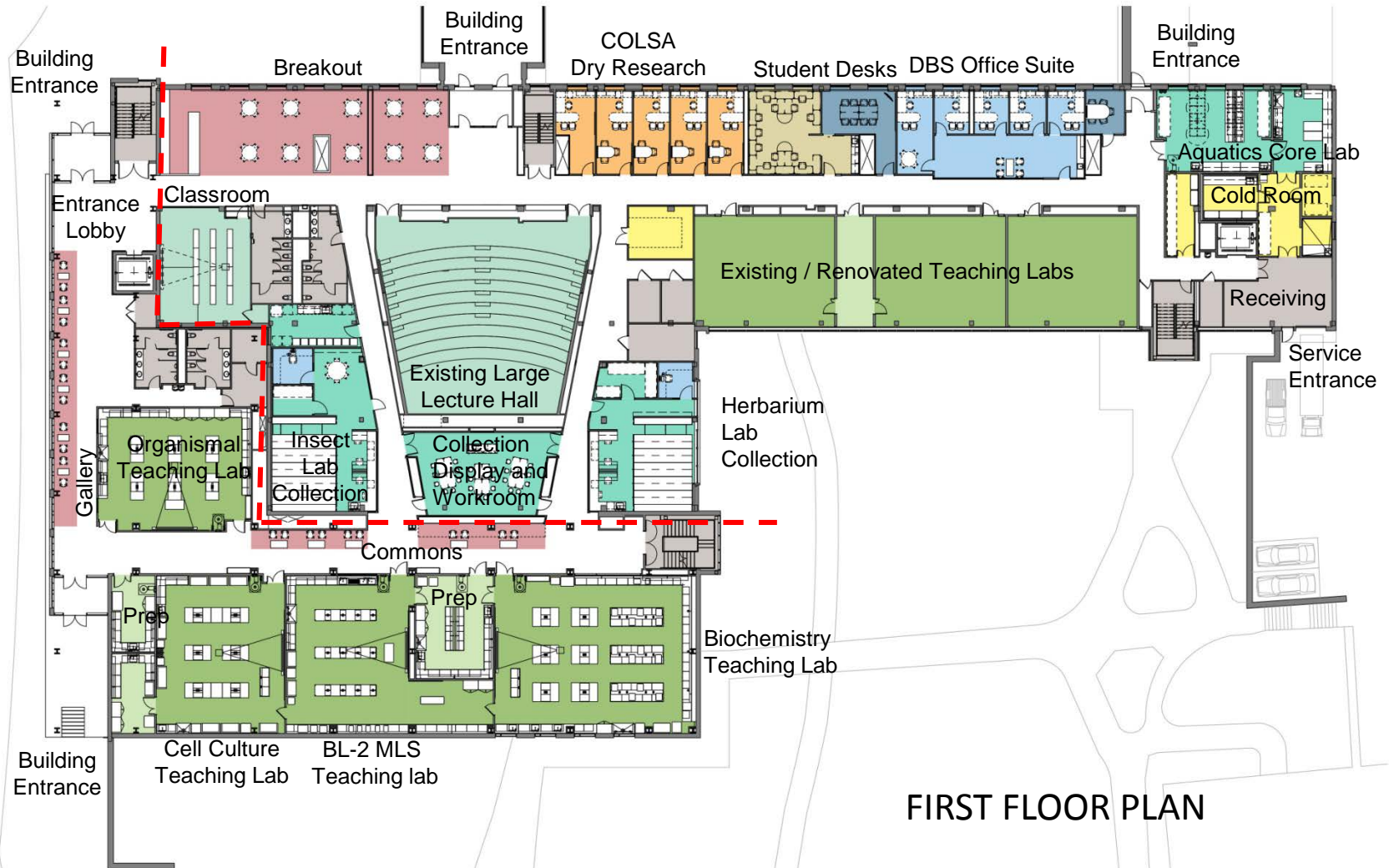
New northeast entry on Academic Way

# Biological Sciences Initiative Spaulding Hall



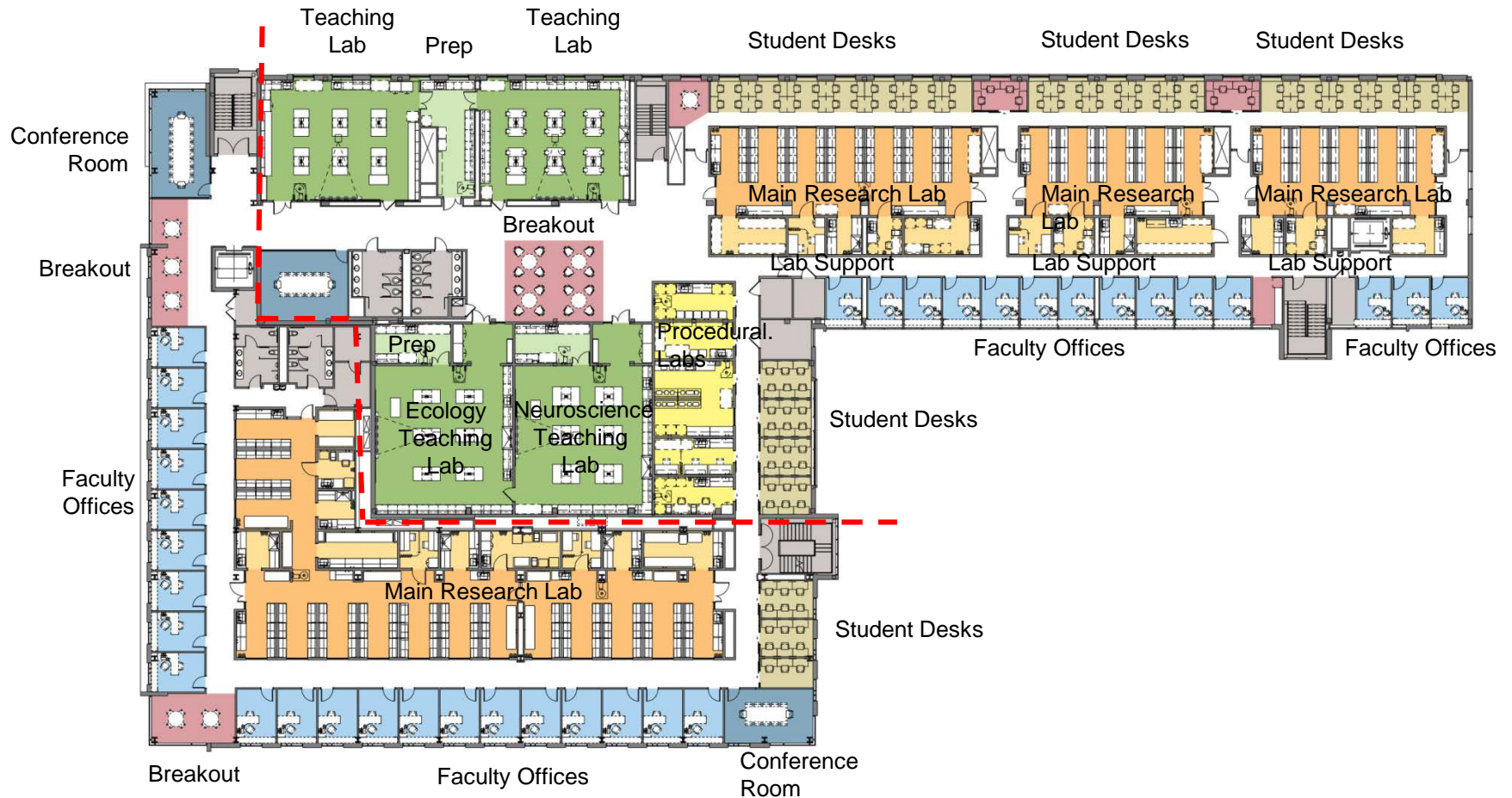


# Biological Sciences Initiative Spaulding Hall



FIRST FLOOR PLAN

# Biological Sciences Initiative Spaulding Hall



SECOND FLOOR PLAN



# Interior Design - main entry - current





# Interior Design – 1<sup>st</sup> floor commons space





# Interior Design - Academic Way science on display



## Interior Design – typical teaching lab entry

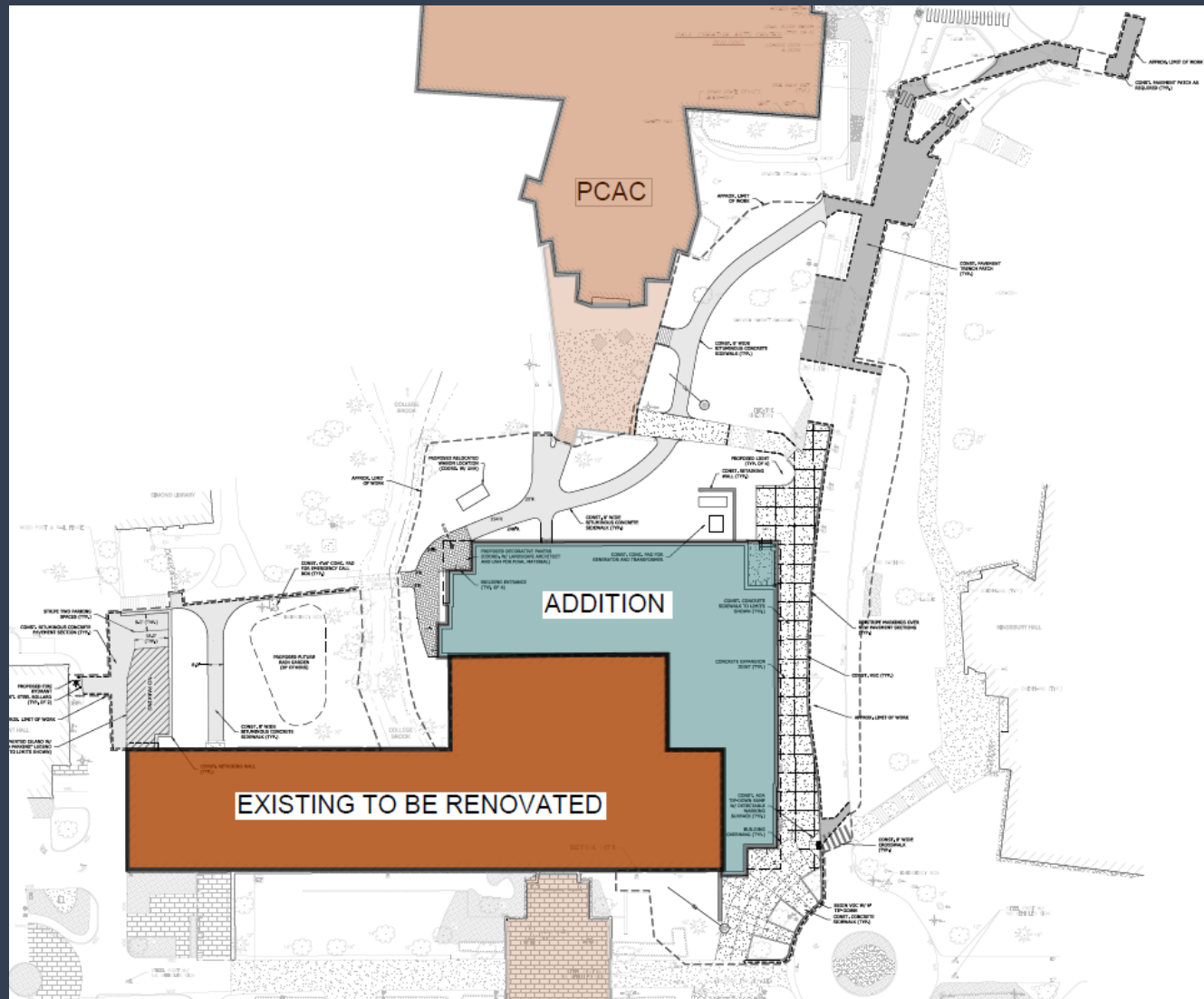




# Interior Design – 2<sup>nd</sup> floor research lab corridor

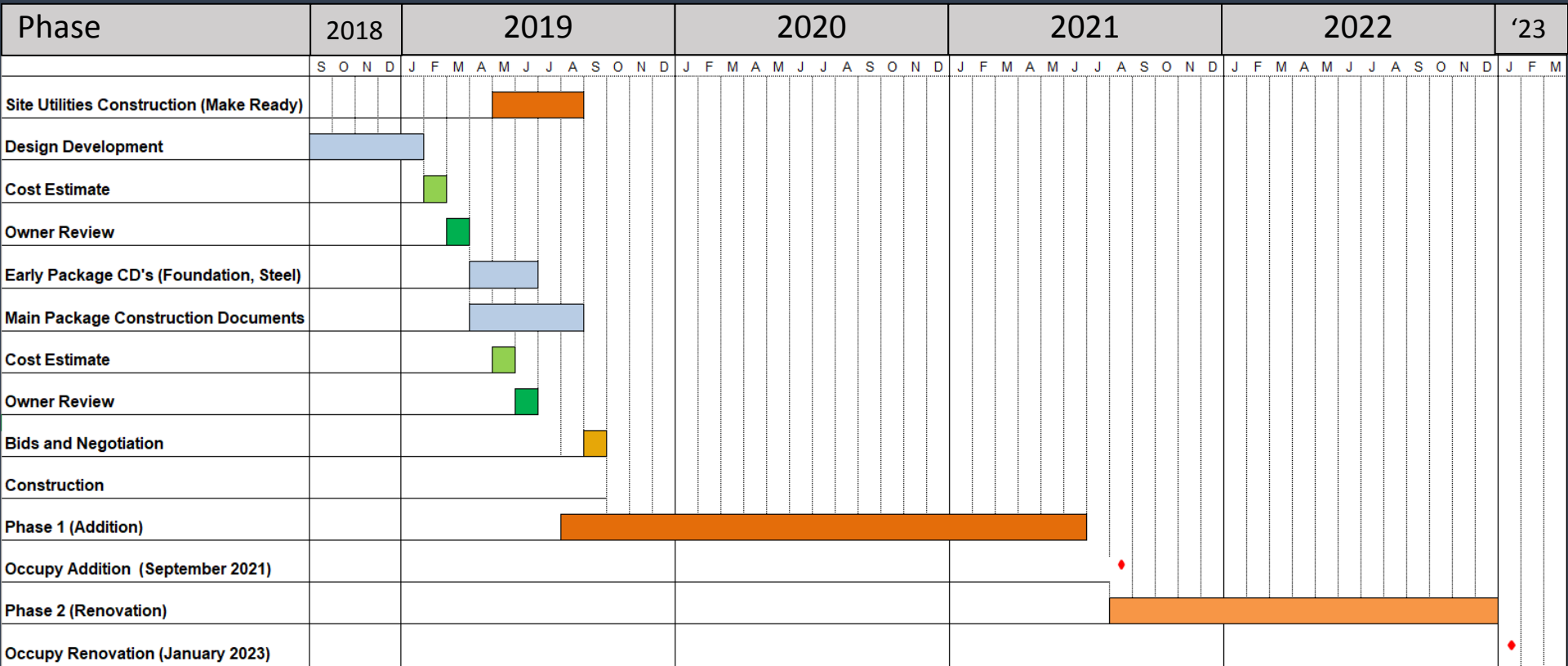


# Biological Sciences Initiative Spaulding Hall





# Biological Sciences Initiative Spaulding Hall

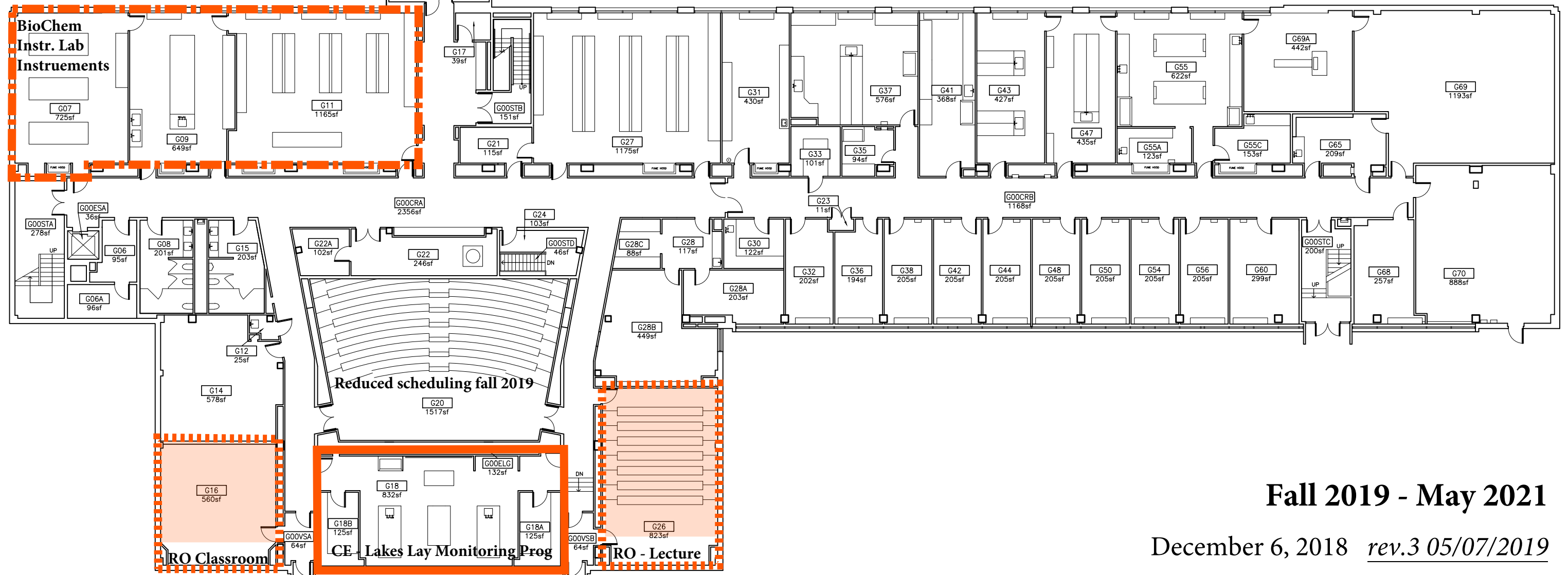


## Project Schedule

# Phase 1 Swing Space Ground Level

SEE 335-G FOR CONTINUATION

Remain in place; vibration isolation for instruments confirmed.



**Closed summer 2019**  
(Skanska moves in week  
of May 13)

Remain in place

**Closed fall 2019**  
(Merge with other RO CRs)  
(Summer 2019 use is okay if needed)

## Fall 2019 - May 2021

December 6, 2018 *rev.3 05/07/2019*

UNH- CP



## 1

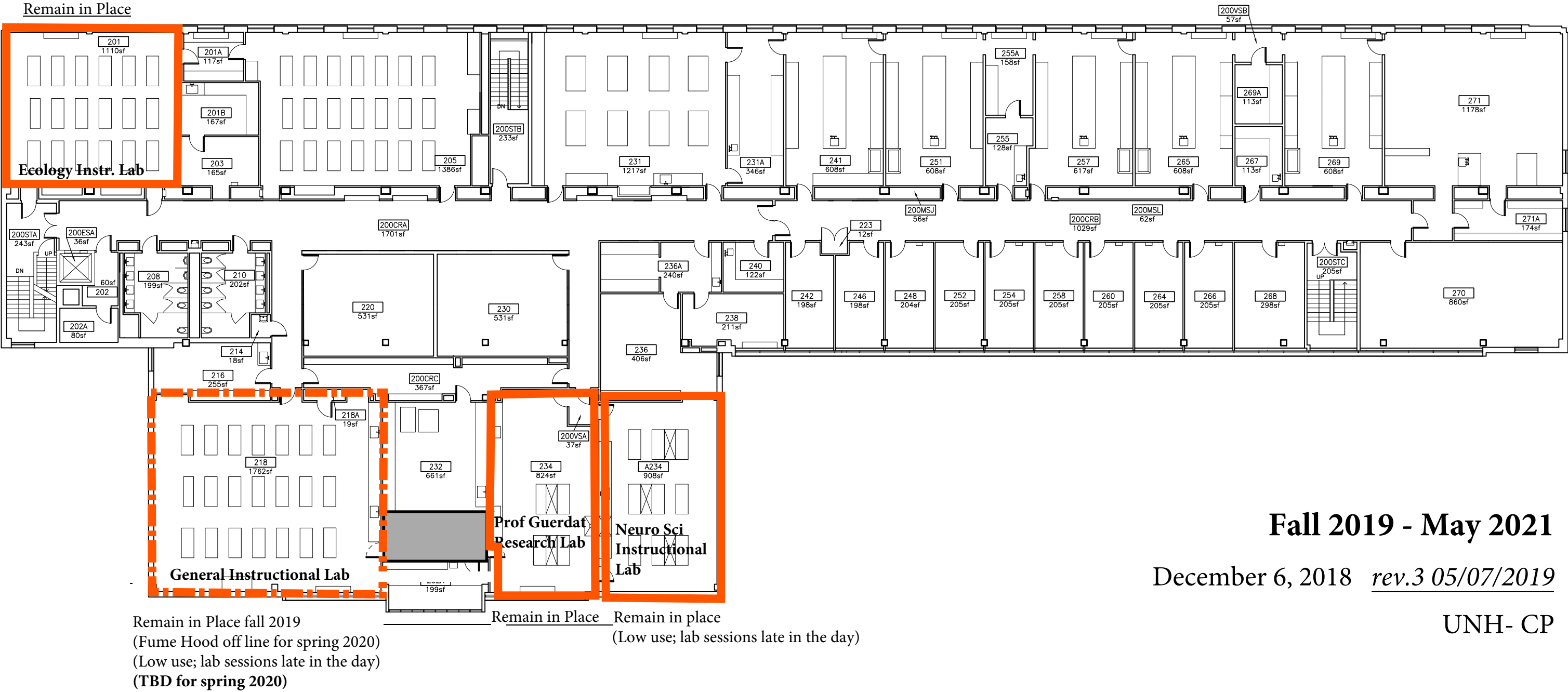
**Prof Haney  
Research Lab**

Prof Brown  
Research Lab

**Prof. Furey  
Research Lab**

# Phase 1 Swing Space

## Level 2



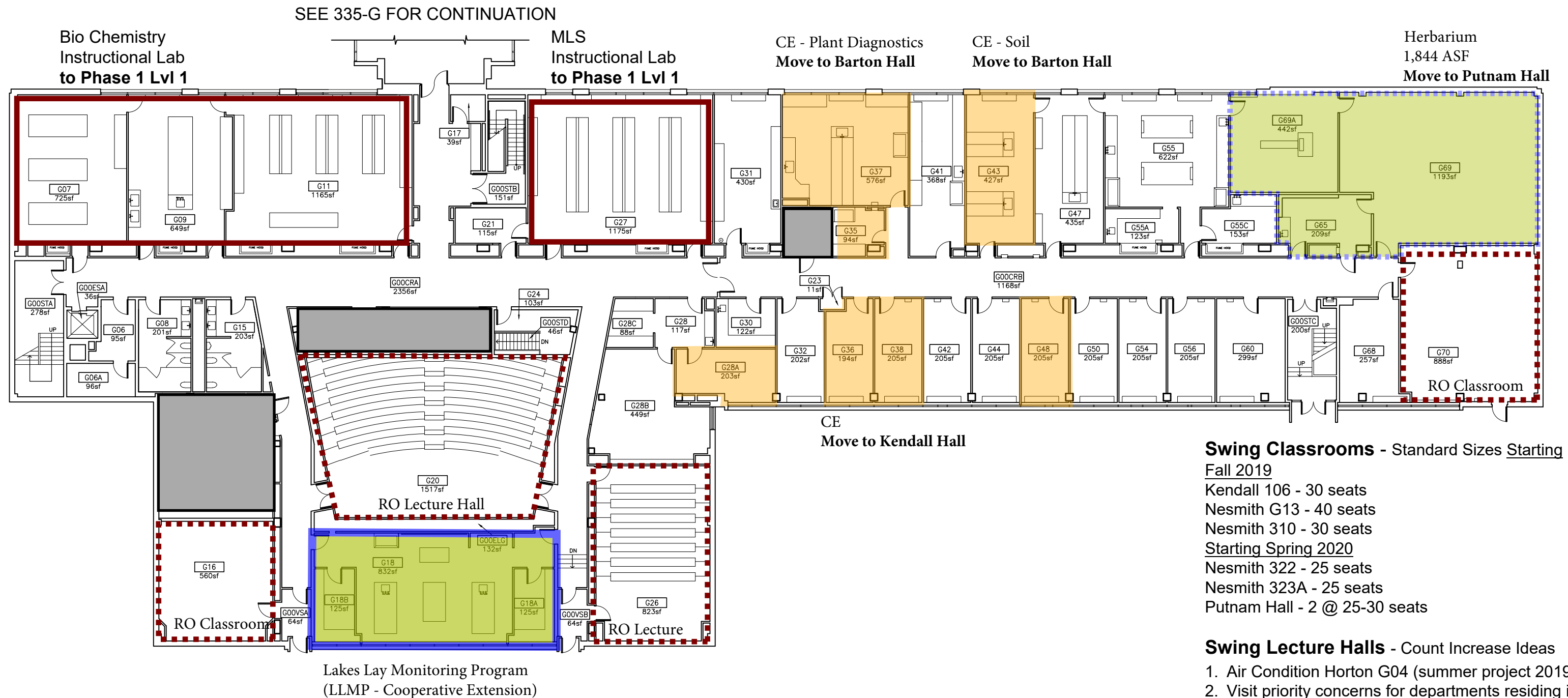


Summer 2021 - January 2023

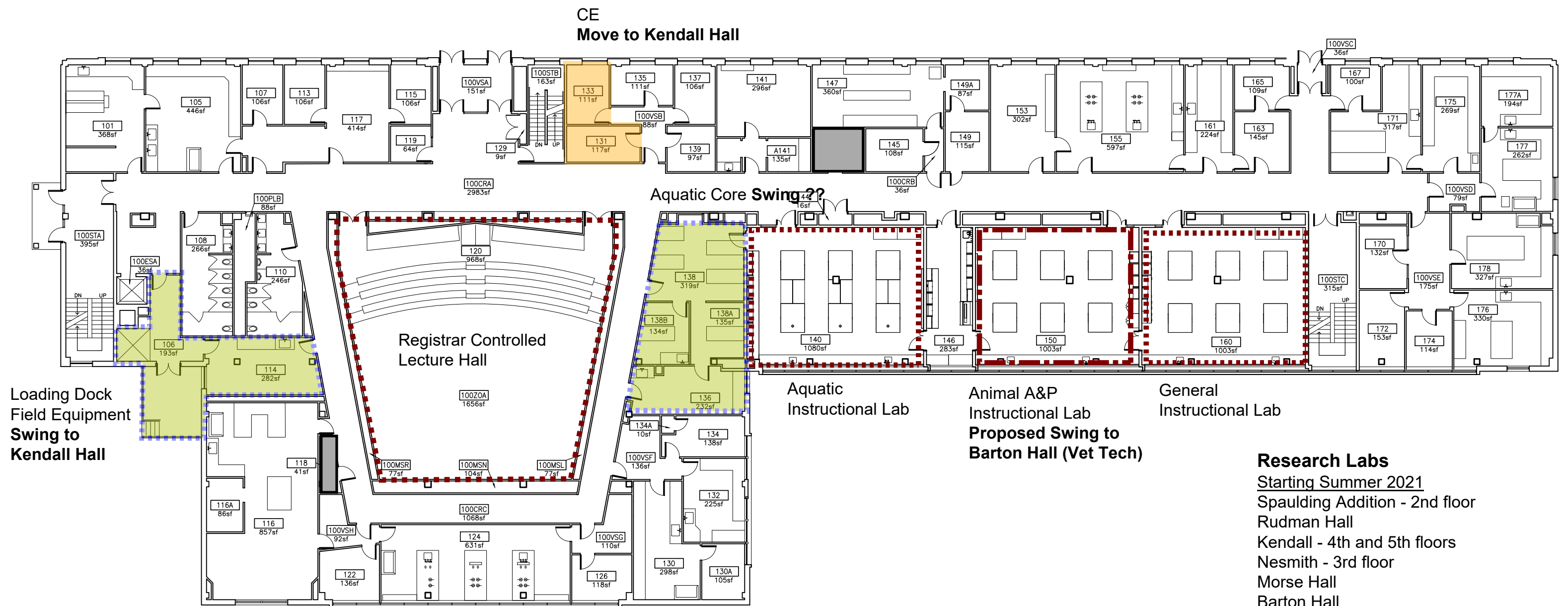
December 6, 2018 rev.4 05/28/2019

UNH- CP

# Phase 2 Swing Space Ground Level



# Phase 2 Swing Space Level 1





# Phase 2 Swing Space

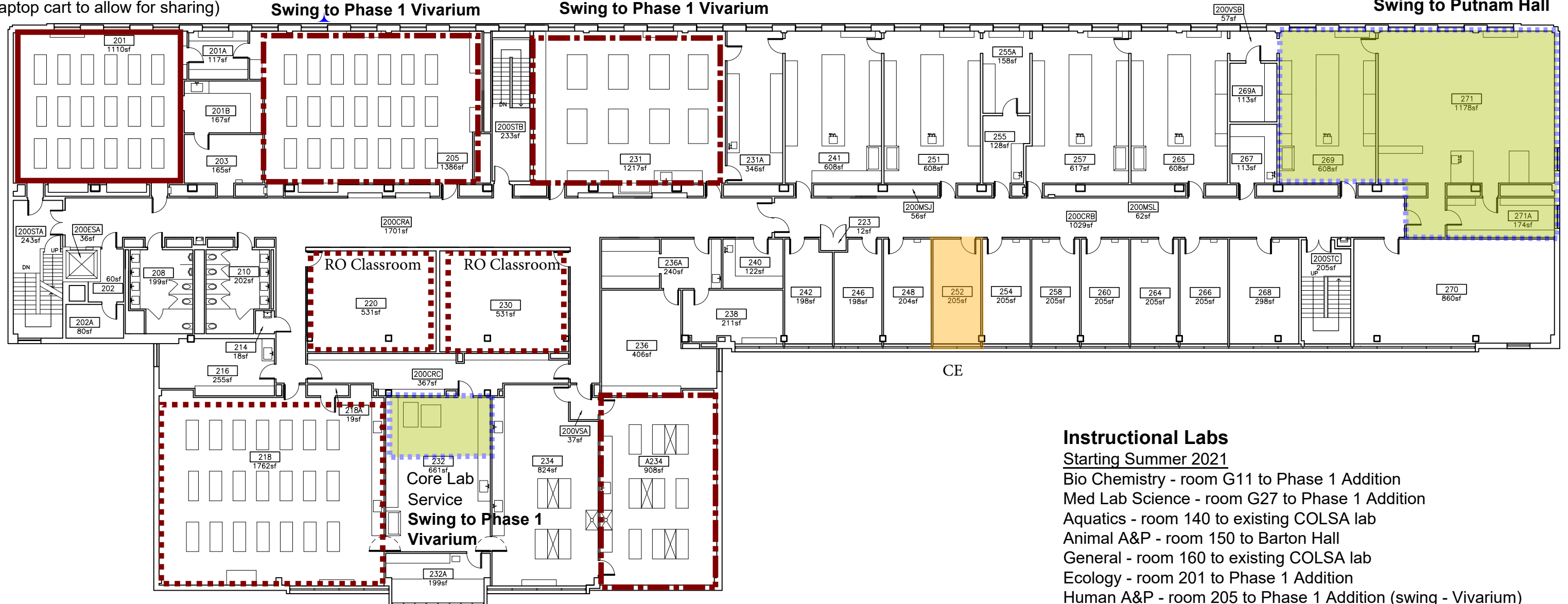
## Level 2

Ecology  
Instructional Lab  
**Move to Phase 1 Lvl 1**  
(laptop cart to allow for sharing)

Human A&P  
Instructional Lab  
**Swing to Phase 1 Vivarium**

Human A&P  
Instructional Lab  
**Swing to Phase 1 Vivarium**

Insectarium  
1,960 ASF  
**Swing to Putnam Hall**



General  
Instructional Lab  
**Low use; merge with existing lab**

Neuro Science  
Instructional Lab  
**Swing to Phase 1 Cell Culture**  
(needs to be shared)

### Instructional Labs

#### Starting Summer 2021

- Bio Chemistry - room G11 to Phase 1 Addition
- Med Lab Science - room G27 to Phase 1 Addition
- Aquatics - room 140 to existing COLSA lab
- Animal A&P - room 150 to Barton Hall
- General - room 160 to existing COLSA lab
- Ecology - room 201 to Phase 1 Addition
- Human A&P - room 205 to Phase 1 Addition (swing - Vivarium)
- Human A&P - room 231 to Phase 1 Addition (swing - Vivarium)
- General - room 218 to existing COLSA lab
- Neuro Science - room A234 to Phase 1 Addition (swing - Cell Culture)

# Biological Sciences Initiative Spaulding Hall



Construction Map

<https://maps.unh.edu/Html5Viewer/Index.html?viewer=unhconstruction>





Skanska's Sidewalk Superintendent provides an innovative way to keep project stakeholders informed of your project's progress - updating them on construction progress and scheduled activities



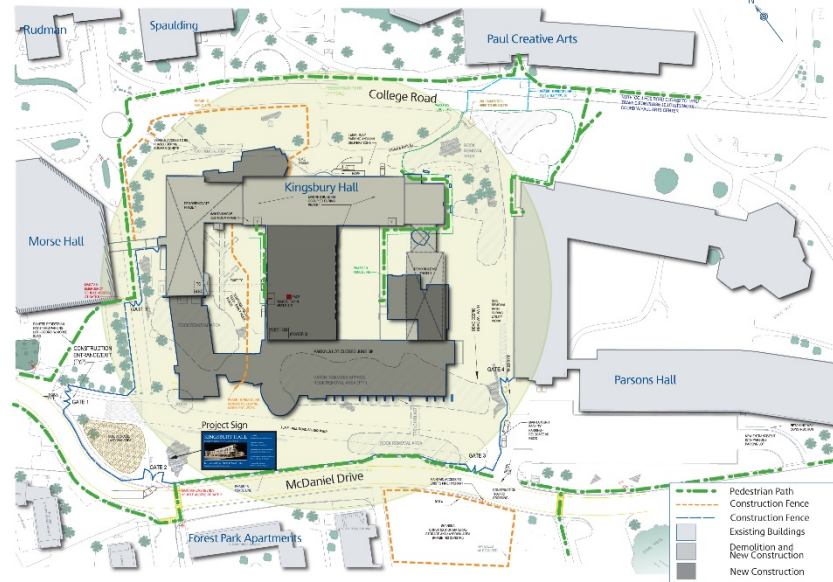
**Amazing Bearings**  
In 1912 a 2.5-ton Kingsbury thrust bearing was first installed at the Holtwood Hydroelectric Station on the Susquehanna River. Still operating smoothly today, the bearing has an estimated life expectancy of 1300 years—without maintenance. It uses a thin film of oil to support the massive weight it carries—220 tons or more—and virtually eliminate mechanical wear. Prior to Kingsbury's invention, rolling bearings in similar applications would wear out approximately every two months.

**Tribologist and Polyglot**  
The father of five daughters, Kingsbury could read in more than seven different languages and was an expert on the French poet Mallarme. He was granted more than 45 patents for methods of bearing construction. Born in Illinois in 1863, he apparently became interested in tribology—the science of friction, lubrication, and wear—as a mechanical engineering student at Cornell. He ultimately received two honorary doctorates for his contributions in the field. Kingsbury died in 1943.

SKANSKA

# KINGSBURY HALL

## RENOVATIONS AND ADDITIONS



UNIVERSITY of NEW HAMPSHIRE

## Sidewalk Superintendent

The project involves a combination of new construction and renovation of the existing building for undergraduate and graduate engineering and physical science labs, classrooms and faculty offices.

The renovations and additions for the College of Civil Engineering and Physical Science at Kingsbury Hall are intended to address three fundamental issues: first, to invest the complex building with the diversified spaces and state-of-the-art technologies which best serve the College's pedagogical aspirations; second, to create a prominent and distinguished presence to the south campus; and third, to architecturally reinvigorate the whole frontage of the existing structure.

The design concept establishes a new edge at the south side of the site by building a laboratory wing and a wing of offices. It proposes selective demolitions at south and east, and a number of insertions and facade modifications at north intended to shift the emphasis to a new main entry. As a result of these strategies, two major public spaces are created: a working paved courtyard and an outdoor landscape courtyard.



Architect: Rothman Partners Architects, Inc.  
Structural Engineers: LeMessurier Consultants  
Mechanical and Electrical Engineers: R.G. Vanderweil Engineers, Inc.  
Civil Engineers/Landscape Architects: Vanasse Hangen Brustlin, Inc.  
Construction Managers: Skanska USA Building, Inc.

KEEP NEW HAMPSHIRE

Skanska's Sidewalk Superintendent provides an innovative way to keep project stakeholders informed of your project's progress - updating them on construction progress and scheduled activities



# Biological Sciences Initiative Spaulding Hall

QUESTIONS ??