

# THE WMUR GRANITE STATE POLL

## THE UNIVERSITY OF NEW HAMPSHIRE SURVEY CENTER

September 30, 2010

### FRESH FROM PRIMARY WIN, AYOTTE WIDENS LEAD AGAINST HODES

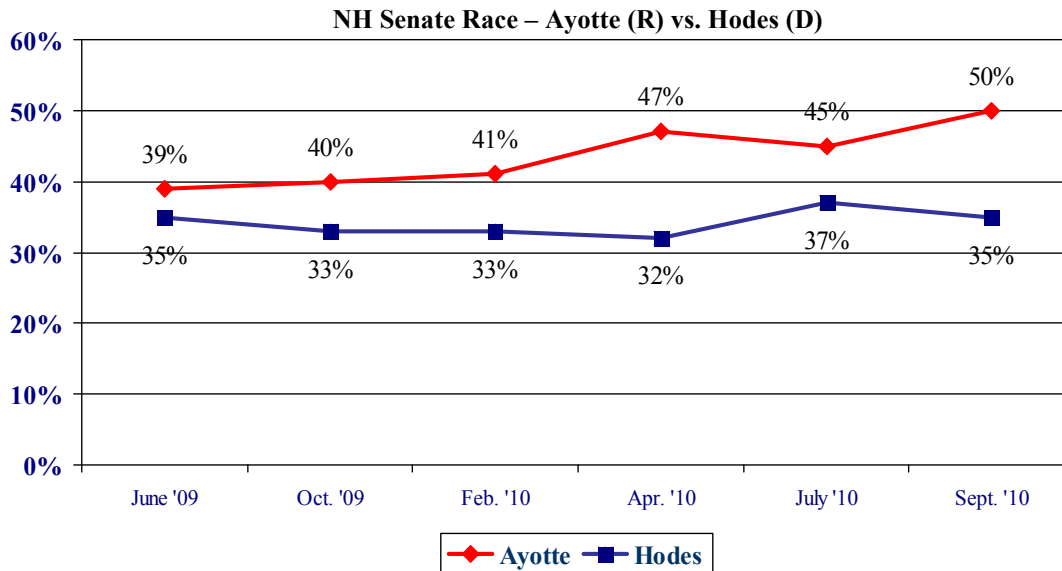
By: Andrew E. Smith, Ph.D.  
UNH Survey Center  
www.unh.edu/survey-center  
603/862-2226

DURHAM, NH – Former New Hampshire Attorney General Kelly Ayotte, winner of the Republican nomination for U.S. Senate, has widened her lead over Democrat Paul Hodes in the race to succeed Judd Gregg in the U.S. Senate.

These findings are based on the latest **WMUR Granite State Poll**,\* conducted by the University of New Hampshire Survey Center. Five hundred fifteen (515) randomly selected New Hampshire adults were interviewed by telephone between September 23 and September 29, 2010. The margin of sampling error for the survey is +/- 4.3 percent. Included was a subsample of 472 likely 2010 general election voters (margin of sampling error +/-4.5%).

#### 2010 U.S. Senate Race

Kelly Ayotte won a hard fought, 4-way primary battle on September 14<sup>th</sup> for the right to run against 2<sup>nd</sup> C.D. Congressman Paul Hodes. The seat is currently held by Republican Judd Gregg, who is retiring. The primary contest seems to have helped Ayotte as she has widened her lead over Hodes since July. Currently, 50% of New Hampshire likely voters say they will vote for Ayotte, 35% back Hodes, 2% prefer some other candidate and 12% are undecided. In July, Ayotte led Hodes by only 8 percentage points, 45% to 37%.

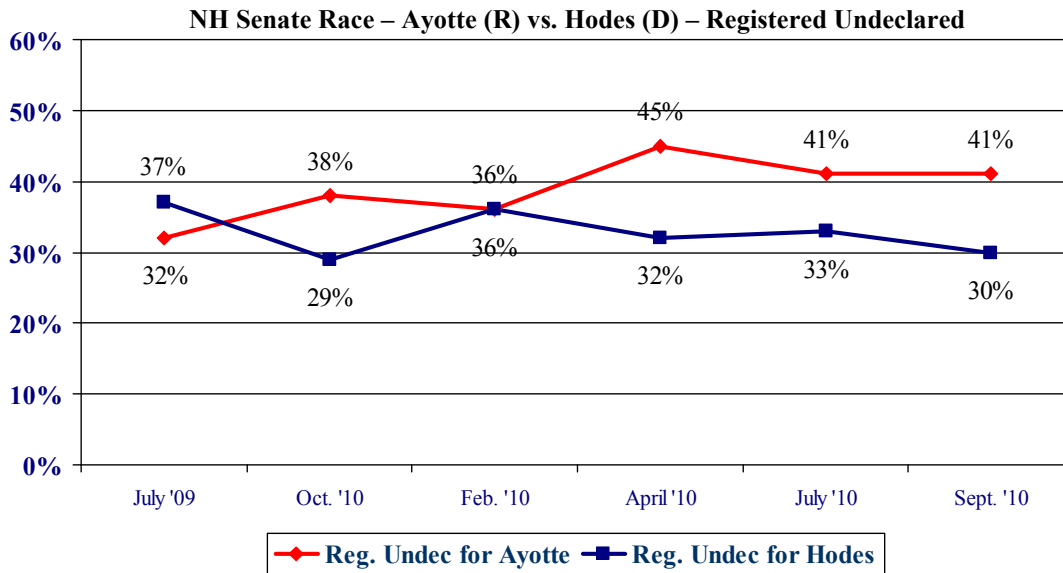


However, this race is by no means over as only 31% of likely voters say they have definitely decided who they will vote for, 15% are leaning to a candidate, and 48% are still trying to decide. Ayotte leads Hodes by 58% to 39% among voters who have definitely decided who they will support.

Republicans are more energized about this election in New Hampshire and across the country. Among likely voters who are very interested in the election, Ayotte holds a 56% to 36% lead.

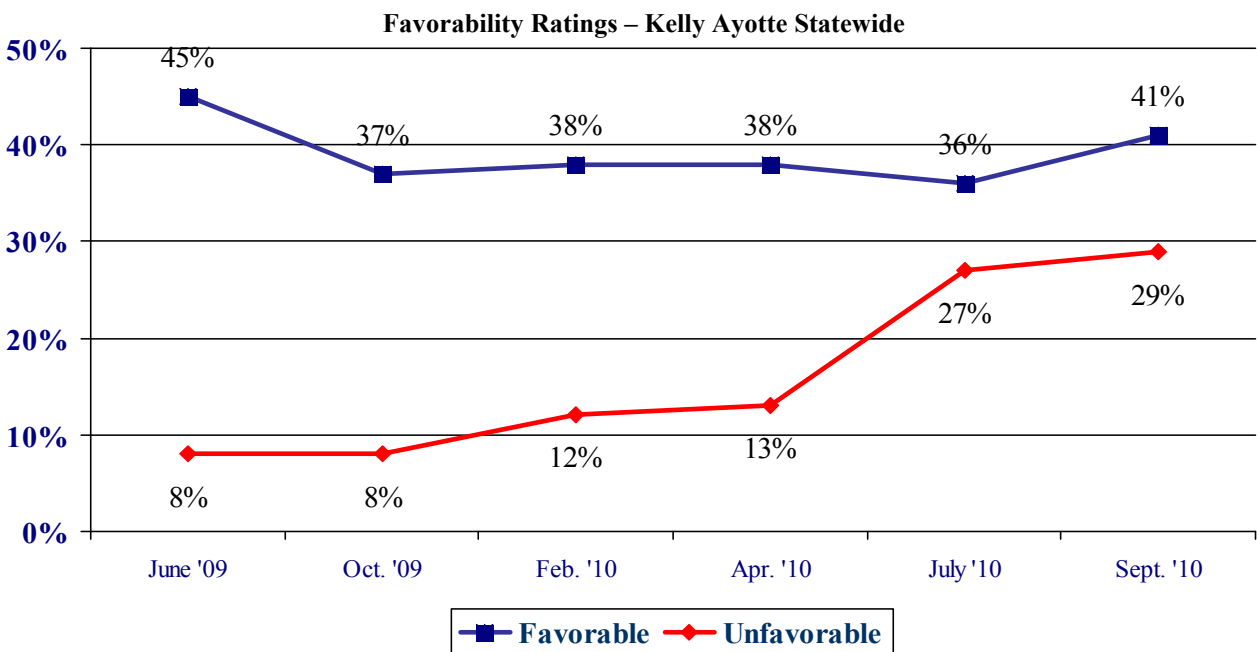
\* We ask that this copyrighted information be referred to as *the Granite State Poll*, sponsored by WMUR-TV, and conducted by the University of New Hampshire Survey Center.

Ayotte continues to lead among Undeclared voters, often referred to as Independents, by 41% to 30%, and has solidified her support among registered Republicans, 87% of whom back her. Hodes not only is having difficulty among Independents, but 17% of registered Democrats say they will vote for Ayotte.



### Favorability Ratings of Senate Candidates

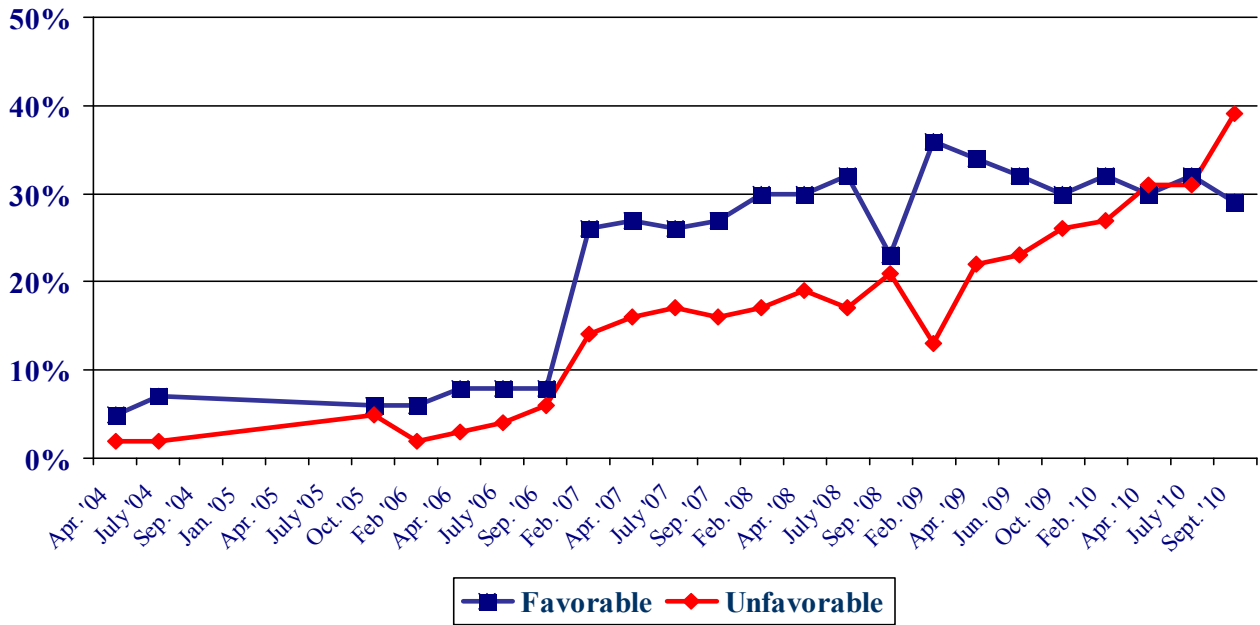
A major reason that Ayotte leads is that she is viewed much more favorably than Hodes. Currently, 41% of all New Hampshire adults have a favorable opinion of Ayotte, 29% have an unfavorable opinion of her, 11% are neutral, and 19% don't know enough about her to say. Ayotte's net favorability, the percentage having a favorable opinion minus the percentage having an unfavorable opinion, is at +12%, though this is down from +25% in April and from +37% a year ago. Among likely voters, Ayotte has a +14% net favorability rating.



Paul Hodes, by comparison, has become increasingly unpopular in the Granite State. Currently, only 29% of Granite Staters have a favorable opinion of Hodes, 39% have an unfavorable opinion, 9% are neutral, and 24% don't know enough about him to say. Hodes' net favorability rating is at a low -10%, down from +1% in July.

"Hodes' popularity is a key factor in this race," said Andrew Smith, director of the UNH Survey Center. "This level of unpopularity would be difficult to work with in any election year, but with Republicans much more motivated to get out and vote than Democrats, it may be crippling to Hodes."

**Favorability Ratings – Paul Hodes Statewide**

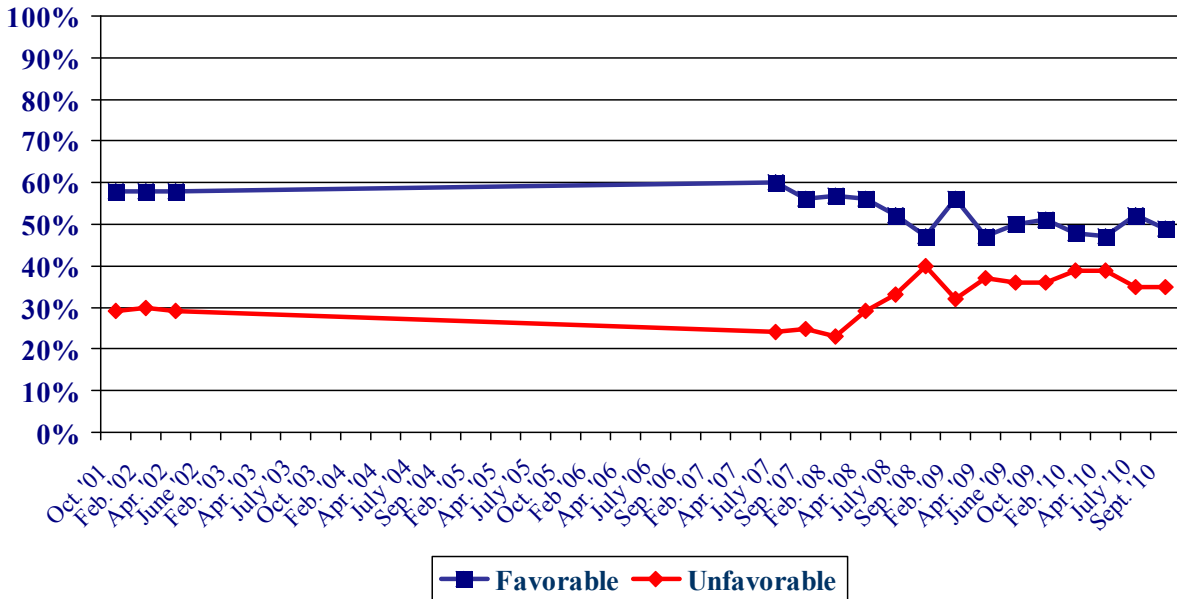


### Favorability Ratings – Jeanne Shaheen

Senator Jeanne Shaheen has remained largely out of the political limelight and her popularity has remained stable for the past year. In the most recent Granite State Poll, 49% of New Hampshire adults view her favorably, 35% view her unfavorably, and 16% are neutral or don't know enough about her to say. Shaheen's net favorability rating is +14%.

Shaheen is viewed very favorably by Democrats (net +72%), favorably by Independents (net +21%), but very unfavorably by Republicans (net -51%).

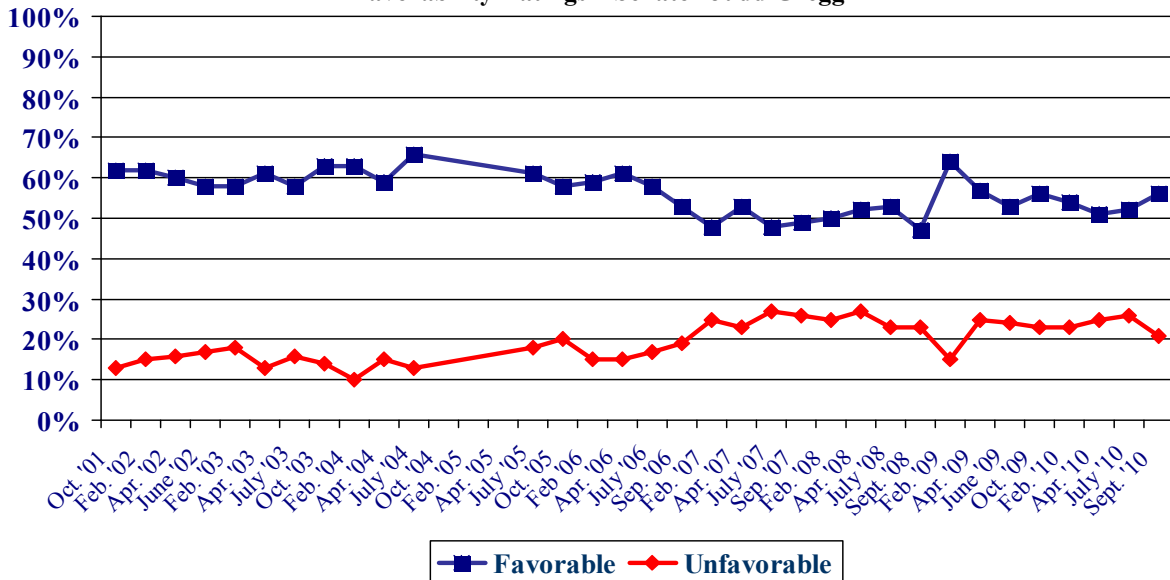
### Favorability Ratings – Jeanne Shaheen



### Favorability Ratings – Senator Judd Gregg

In his final months in office, Republican Senator Judd Gregg is still popular in the Granite State. Currently, 56% of New Hampshire residents have a favorable opinion of Gregg, 21% have an unfavorable opinion of him, and 25% are neutral or don't know enough about him to say. Gregg's net favorability rating is +35%, an increase from +26% in July. Gregg is viewed very favorably by Republicans (net +70%) and by Independents (net +39%), and somewhat unfavorably by Democrats (net -2%).

### Favorability Ratings – Senator Judd Gregg



These findings are based on the latest **WMUR Granite State Poll**,\* conducted by the University of New Hampshire Survey Center. Five hundred fifteen (515) randomly selected New Hampshire adults were interviewed by telephone between September 23 and September 29, 2010. The margin of sampling error for the survey is +/- 4.3 percent. Included was a subsample of 472 likely 2010 general election voters (margin of sampling error +/-4.5%).

The data have been weighted to adjust for numbers of adults and telephone lines within households, respondent sex, and region of the state. In addition to potential sampling error, all surveys have other potential sources of non-sampling error including question order effects, question wording effects, and non-response.

**Favorability Rating – U.S. Representative Paul Hodes – Statewide**

“Next, I'd like to get your overall opinion of some people in the news. As I read each name, please say if you have a favorable or unfavorable opinion of this person - or if you have never heard of him or her. Congressman Paul Hodes?”

<u>Statewide</u>	<u>Favorable</u>	<u>Neutral</u>	<u>Unfavorable</u>	<u>Don't Know</u>	<u>Net</u>	<u>(N)</u>
Sept. '10	29%	9%	39%	24%	-10%	(514)
July '10	32%	8%	31%	29%	+1%	(504)
Apr. '10	30%	10%	31%	29%	-1%	(508)
Feb. '10	32%	8%	27%	32%	+5%	(497)
Oct. '09	30%	7%	26%	37%	+4%	(501)
Jun. '09	32%	8%	23%	37%	+9%	(557)
Apr. '09	34%	8%	22%	35%	+12%	(502)
Feb. '09	36%	15%	13%	36%	+23%	(619)
Sep. '08	23%	10%	21%	47%	+2%	(548)
July '08	32%	12%	17%	40%	+15%	(517)
Apr. '08	30%	17%	19%	34%	+11%	(498)
Feb. '08	30%	18%	17%	34%	+13%	(554)
Sept. '07	27%	17%	16%	40%	+9%	(506)
July '07	26%	12%	17%	45%	+9%	(507)
Apr. '07	27%	17%	16%	41%	+11%	(515)
Feb. '07	24%	19%	14%	42%	+10%	(535)
Sept. '06	8%	17%	6%	70%	+2%	(513)
July '06	8%	8%	4%	81%	+4%	(501)
Apr. '06	8%	6%	3%	83%	+5%	(505)
Feb. '06	6%	10%	2%	82%	+4%	(502)
Oct. '05	6%	9%	5%	81%	+1%	(510)

**Favorability Rating –Kelly Ayotte**

“Next, I'd like to get your overall opinion of some people in the news. As I read each name, please say if you have a favorable or unfavorable opinion of this person - or if you have never heard of him or her. Former New Hampshire Attorney General Kelly Ayotte?”

<u>Statewide</u>	<u>Favorable</u>	<u>Neutral</u>	<u>Unfavorable</u>	<u>Don't Know</u>	<u>Net</u>	<u>(N)</u>
Sept. '10	41%	11%	29%	19%	+12%	(515)
July '10	36%	7%	27%	30%	+9%	(504)
Apr. '10	38%	7%	13%	41%	+25%	(508)
Feb. '10	38%	6%	12%	44%	+26%	(497)
Oct. '09	37%	6%	8%	49%	+29%	(501)
Jun. '09	45%	7%	8%	40%	+37%	(556)

\* We ask that this copyrighted information be referred to as *the Granite State Poll*, sponsored by WMUR-TV, and conducted by the University of New Hampshire Survey Center.

### Firmness of NH Senate Vote

"I know that it is early, but have you definitely decided who you will vote for in the New Hampshire Senate election in 2010 ... are you leaning toward someone ... or have you considered some candidates but are still trying to decide?"

	<u>Oct. '09</u>	<u>Feb. '10</u>	<u>Apr. '10</u>	<u>July '10</u>	<u>Sept. '10</u>
Definitely Decided	6%	10%	14%	15%	37%
Leaning Toward Someone	8%	11%	14%	19%	15%
Still Trying to Decide	86%	78%	72%	66%	48%
N=	(458)	(440)	(456)	(446)	(471)

### US Senate – Ayotte vs. Hodes

"If the 2010 Senate election was being held today and the candidates were Kelly Ayotte the Republican and Paul Hodes, the Democrat, who would you vote for?" ROTATE CANDIDATES

	<u>Jun. '09</u>	<u>Oct. '09</u>	<u>Feb. '10</u>	<u>Apr. '10</u>	<u>July '10</u>	<u>Sept. '10</u>
Ayotte	39%	40%	41%	47%	45%	50%
Hodes	35%	33%	33%	32%	37%	35%
Other	2%	2%	1%	*	1%	2%
Don't know / undecided	24%	25%	25%	21%	17%	12%
(N=)	(497)	(408)	(440)	(460)	(446)	(466)

### Favorability Rating – Senator Jeanne Shaheen

"Next, I'd like to get your overall opinion of some people in the news. As I read each name, please say if you have a favorable or unfavorable opinion of this person - or if you have never heard of him or her. Senator (Former Governor/Governor) Jeanne Shaheen?"

<u>Statewide</u>	<u>Favorable</u>	<u>Neutral</u>	<u>Unfavorable</u>	<u>Don't Know</u>	<u>Net</u>	<u>(N)</u>
<b>Sept. '10</b>	<b>49%</b>	<b>5%</b>	<b>35%</b>	<b>11%</b>	<b>+14%</b>	<b>(515)</b>
<b>July '10</b>	52%	6%	35%	8%	+17%	(503)
<b>Apr. '10</b>	47%	6%	39%	8%	+8%	(511)
<b>Feb. '10</b>	48%	5%	39%	8%	+9%	(496)
<b>Oct. '09</b>	51%	5%	36%	7%	+15%	(502)
<b>Jun. '09</b>	50%	6%	36%	8%	+14%	(557)
<b>Apr. '09</b>	47%	7%	37%	9%	+10%	(503)
<b>Feb. '09</b>	56%	7%	32%	5%	+24%	(617)
<b>Sep. '08</b>	47%	5%	40%	8%	+7%	(522)
<b>July '08</b>	53%	9%	31%	6%	+22%	(472)
<b>Apr. '08</b>	56%	10%	29%	5%	+27%	(500)
<b>Feb. '08</b>	57%	13%	23%	7%	+34%	(555)
<b>Sept. '07</b>	56%	11%	25%	8%	+31%	(506)
<b>July '07</b>	60%	9%	24%	8%	+36%	(520)

**Favorability Rating – U.S. Senator Judd Gregg**

"Next, I'd like to get your overall opinion of some people in the news. As I read each name, please say if you have a favorable or unfavorable opinion of this person - or if you have never heard of him or her. Senator Judd Gregg?"

<u>Statewide</u>	<u>Favorable</u>	<u>Neutral</u>	<u>Unfavorable</u>	<u>Don't Know</u>	<u>Net</u>	<u>(N)</u>
<b>Sept. '10</b>	<b>56%</b>	<b>7%</b>	<b>21%</b>	<b>16%</b>	<b>+35%</b>	<b>(515)</b>
<b>July '10</b>	52%	8%	26%	14%	+26%	(504)
<b>Apr. '10</b>	51%	8%	25%	16%	+26%	(507)
<b>Feb. '10</b>	54%	7%	23%	16%	+31%	(497)
<b>Oct. '09</b>	56%	7%	23%	13%	+33%	(502)
<b>Jun. '09</b>	53%	9%	24%	14%	+29%	(557)
<b>Apr. '09</b>	47%	7%	37%	9%	+10%	(503)
<b>Feb. '09</b>	64%	9%	15%	12%	+49%	(617)
<b>Sept. '08</b>	47%	9%	23%	22%	+24%	(547)
<b>July '08</b>	53%	10%	23%	13%	+30%	(474)
<b>Apr. '08</b>	52%	11%	27%	10%	+25%	(497)
<b>Feb. '08</b>	50%	13%	25%	12%	+25%	(555)
<b>Sept. '07</b>	49%	12%	26%	13%	+23%	(508)
<b>July '07</b>	48%	11%	27%	14%	+21%	(516)
<b>Apr. '07</b>	53%	13%	23%	11%	+30%	(515)
<b>Feb. '07</b>	48%	15%	25%	12%	+23%	(533)
<b>Sept. '06</b>	53%	15%	19%	13%	+34%	(513)
<b>July '06</b>	58%	11%	17%	14%	+41%	(503)
<b>Apr. '06</b>	61%	12%	15%	13%	+46%	(505)
<b>Feb. '06</b>	59%	14%	15%	12%	+44%	(501)
<b>Oct. '05</b>	58%	10%	20%	12%	+38%	(510)
<b>July '05</b>	61%	8%	18%	13%	+43%	(501)
<b>July '04</b>	66%	8%	13%	12%	+53%	(508)
<b>Apr. '04</b>	59%	11%	15%	15%	+44%	(541)
<b>Feb. '04</b>	63%	12%	10%	15%	+53%	(509)
<b>Oct. '03</b>	63%	8%	14%	16%	+49%	(496)
<b>June '03</b>	58%	10%	16%	16%	+42%	(514)
<b>Apr. '03</b>	61%	8%	13%	18%	+48%	(507)
<b>Feb. '03</b>	58%	8%	18%	16%	+40%	(652)
<b>June '02</b>	58%	10%	17%	15%	+41%	(638)
<b>Apr. '02</b>	60%	6%	16%	18%	+44%	(691)
<b>Feb. '02</b>	62%	9%	15%	14%	+47%	(724)
<b>Oct. '01</b>	62%	9%	13%	16%	+49%	(679)

### Firmness of choice for New Hampshire Senate

STATEWIDE	<b><u>Definitely Decided</u></b> 37%	<b><u>Leaning Toward Someone</u></b> 15%	<b><u>Still Trying To Decide</u></b> 48%	<b><u>(N=)</u></b> 471
Registered Democrat	47%	13%	40%	105
Registered Undeclared	30%	16%	54%	208
Registered Republican	49%	16%	36%	133
Democrat	38%	15%	46%	184
Independent	21%	11%	68%	89
Republican	44%	17%	39%	195
Liberal	46%	13%	40%	83
Moderate	34%	15%	51%	210
Conservative	41%	18%	41%	153
Extremely interested in election	58%	14%	28%	202
Very interested	32%	21%	47%	165
Somewhat/Not very interested	7%	6%	88%	102
Union household	34%	14%	52%	56
Non union	38%	15%	47%	411
10 yrs or less in NH	31%	17%	53%	73
11 to 20 years	37%	14%	49%	66
More than 20 years	39%	15%	46%	325
18 to 34	19%	4%	77%	38
35 to 49	30%	17%	52%	127
50 to 64	43%	15%	42%	177
65 and over	44%	15%	41%	122
Male	41%	16%	43%	232
Female	35%	14%	52%	239
Get most news from Local TV news	31%	13%	56%	120
National TV news	38%	18%	44%	121
Radio	54%	12%	34%	50
Newspapers	37%	19%	44%	61
Internet	29%	17%	54%	90
Other	61%	0%	39%	20
High school or less	28%	7%	66%	79
Some college	33%	18%	49%	113
College graduate	41%	15%	44%	178
Post graduate	44%	18%	39%	99
Less than \$30K	20%	15%	65%	31
\$30K to \$60K	45%	9%	45%	65
\$60K to \$75K	25%	18%	58%	38
\$75K to \$100K	44%	14%	42%	62
\$100K or more	43%	17%	41%	123
Attend services 1 or more/week	34%	17%	49%	132
1 2 times a month	37%	12%	51%	66
Less often	43%	14%	44%	130
Never	37%	15%	49%	125
North Country	38%	14%	47%	40
Central / Lakes	38%	15%	47%	71
Connecticut Valley	36%	13%	51%	69
Mass Border	33%	16%	51%	133
Seacoast	37%	23%	41%	83
Manchester Area	47%	6%	47%	76
First Cong. Dist	39%	17%	44%	240
Second Cong. Dist	36%	13%	51%	231

**US Senate – Kelly Ayotte vs. Paul Hodes – Likely Voters**

<b>STATEWIDE</b>	<b><u>Ayotte</u> 50%</b>	<b><u>Hodes</u> 35%</b>	<b><u>Other</u> 2%</b>	<b><u>DK</u> 12%</b>	<b><u>(N)</u> 466</b>
Registered Democrat	16%	76%	3%	5%	105
Registered Undeclared	45%	33%	2%	20%	203
Registered Republican	86%	6%	1%	6%	134
Democrat	17%	70%	2%	11%	182
Independent	41%	30%	5%	24%	87
Republican	87%	6%	1%	7%	195
Liberal	10%	80%	2%	9%	83
Moderate	45%	38%	3%	14%	207
Conservative	85%	8%	1%	6%	150
Definitely decided vote	58%	39%	1%	2%	176
Leaning toward someone	52%	41%	1%	5%	68
Still trying to decide	44%	31%	3%	22%	219
Extremely interested in election	56%	36%	2%	6%	202
Very interested	45%	40%	3%	12%	164
Somewhat/Not very interested	47%	26%	1%	26%	98
Union household	49%	35%	2%	14%	56
Non-union	51%	35%	2%	12%	406
10 yrs or less in NH	50%	34%	2%	14%	75
11 to 20 years	44%	39%	4%	13%	66
More than 20 years	53%	35%	2%	11%	319
18 to 34	44%	44%	0%	11%	38
35 to 49	49%	31%	3%	17%	126
50 to 64	53%	35%	1%	11%	174
65 and over	52%	39%	2%	7%	120
Male	55%	35%	2%	8%	233
Female	45%	35%	2%	17%	233
Get most news from Local TV news	49%	28%	4%	20%	115
National TV news	57%	30%	3%	10%	122
Radio	41%	51%	0%	8%	50
Newspapers	52%	40%	0%	8%	59
Internet	45%	44%	2%	10%	89
Other	74%	17%	0%	10%	21
High school or less	59%	26%	0%	15%	77
Some college	53%	31%	3%	13%	114
College graduate	50%	36%	2%	12%	174
Post-graduate	42%	47%	3%	8%	99
Attend services 1 or more/week	62%	26%	1%	11%	131
1-2 times a month	56%	26%	3%	15%	64
Less often	51%	33%	3%	13%	129
Never	40%	51%	1%	9%	123
North Country	44%	39%	6%	12%	39
Central / Lakes	58%	31%	0%	10%	71
Connecticut Valley	37%	41%	3%	19%	69
Mass Border	58%	30%	2%	10%	129
Seacoast	37%	47%	2%	14%	82
Manchester Area	60%	27%	3%	10%	75
First Cong. Dist	50%	35%	3%	12%	238
Second Cong. Dist	51%	35%	1%	12%	228

**Favorability Rating – Rep. Paul Hodes**

	<u>Favorable</u> 29%	<u>Neutral</u> 9%	<u>Unfavorable</u> 39%	<u>DK</u> 24%	<u>(N)</u> 514
<b>STATEWIDE</b>					
Likely Voter	30%	8%	40%	22%	475
Non-Likely Voter	10%	14%	21%	55%	36
Registered Democrat	64%	7%	14%	16%	111
Registered Undeclared	24%	12%	34%	30%	227
Registered Republican	7%	6%	70%	17%	136
Democrat	55%	11%	13%	21%	199
Independent	24%	11%	33%	32%	105
Republican	6%	5%	68%	22%	207
Liberal	69%	3%	10%	19%	92
Moderate	30%	11%	32%	27%	228
Conservative	9%	8%	65%	18%	165
Extremely interested in election	34%	6%	50%	11%	206
Very interested	33%	8%	36%	22%	172
Somewhat/Not very interested	15%	14%	25%	45%	134
Union household	27%	12%	36%	24%	58
Non-union	29%	8%	39%	24%	452
10 yrs or less in NH	29%	7%	25%	39%	88
11 to 20 years	29%	10%	26%	35%	75
More than 20 years	28%	9%	46%	17%	346
18 to 34	13%	13%	25%	49%	48
35 to 49	24%	9%	36%	30%	137
50 to 64	32%	7%	45%	16%	192
65 and over	35%	9%	38%	18%	131
Male	27%	9%	43%	21%	251
Female	30%	8%	35%	26%	262
Get most news from Local TV news	21%	11%	43%	25%	134
National TV news	29%	9%	39%	23%	132
Radio	41%	5%	40%	14%	55
Newspapers	39%	6%	34%	21%	64
Internet	31%	11%	31%	27%	96
Other	10%	0%	53%	37%	24
High school or less	21%	13%	37%	29%	94
Some college	25%	6%	45%	24%	123
College graduate	31%	7%	36%	25%	190
Post-graduate	36%	10%	38%	15%	105
Attend services 1 or more/week	24%	6%	48%	21%	140
1-2 times a month	25%	10%	44%	22%	69
Less often	29%	9%	39%	24%	146
Never	36%	9%	30%	25%	139
North Country	32%	18%	27%	23%	40
Central / Lakes	26%	9%	45%	20%	78
Connecticut Valley	41%	6%	28%	24%	80
Mass Border	28%	6%	42%	24%	142
Seacoast	26%	9%	32%	32%	90
Manchester Area	22%	8%	51%	18%	84
First Cong. Dist	25%	10%	40%	26%	261
Second Cong. Dist	33%	7%	38%	22%	253

**Favorability Rating – Former Attorney General Kelly Ayotte**

	<u>Favorable</u>	<u>Neutral</u>	<u>Unfavorable</u>	<u>DK</u>	<u>(N)</u>
<b>STATEWIDE</b>	<b>41%</b>	<b>11%</b>	<b>29%</b>	<b>19%</b>	<b>515</b>
Likely Voter	43%	11%	29%	17%	477
Non-Likely Voter	27%	10%	18%	45%	36
Registered Democrat	22%	16%	42%	21%	112
Registered Undeclared	38%	9%	32%	21%	227
Registered Republican	68%	11%	15%	7%	136
Democrat	22%	14%	43%	21%	200
Independent	40%	7%	30%	24%	105
Republican	61%	10%	15%	14%	207
Liberal	16%	10%	54%	20%	92
Moderate	44%	13%	27%	16%	228
Conservative	57%	9%	16%	18%	165
Extremely interested in election	51%	9%	30%	10%	206
Very interested	39%	13%	32%	16%	173
Somewhat/Not very interested	30%	12%	23%	36%	135
Union household	41%	12%	28%	18%	58
Non-union	42%	11%	29%	19%	454
10 yrs or less in NH	32%	10%	21%	37%	88
11 to 20 years	40%	9%	30%	20%	75
More than 20 years	44%	12%	30%	14%	347
18 to 34	35%	1%	28%	36%	48
35 to 49	45%	8%	26%	20%	137
50 to 64	39%	12%	35%	14%	192
65 and over	44%	15%	23%	18%	132
Male	42%	12%	29%	18%	252
Female	41%	10%	28%	20%	263
Get most news from Local TV news	39%	11%	25%	25%	135
National TV news	41%	13%	29%	17%	132
Radio	35%	11%	47%	7%	55
Newspapers	53%	3%	29%	15%	64
Internet	39%	12%	29%	21%	96
Other	54%	18%	4%	24%	24
High school or less	34%	19%	20%	27%	94
Some college	48%	6%	25%	21%	123
College graduate	40%	9%	34%	17%	191
Post-graduate	42%	13%	31%	14%	106
Attend services 1 or more/week	46%	10%	22%	21%	140
1-2 times a month	46%	9%	31%	14%	69
Less often	44%	11%	26%	19%	147
Never	34%	14%	34%	18%	139
North Country	44%	15%	21%	20%	41
Central / Lakes	42%	10%	30%	18%	78
Connecticut Valley	28%	10%	32%	29%	80
Mass Border	46%	10%	25%	19%	142
Seacoast	37%	9%	33%	20%	91
Manchester Area	50%	13%	29%	9%	84
First Cong. Dist	43%	12%	28%	17%	262
Second Cong. Dist	40%	10%	29%	21%	254

**Favorability Rating – Senator Judd Gregg**

	<u>Favorable</u> 56%	<u>Neutral</u> 7%	<u>Unfavorable</u> 21%	<u>DK</u> 16%	<u>(N)</u> 515
<b>STATEWIDE</b>					
Likely Voter	58%	7%	22%	12%	476
Non-Likely Voter	27%	5%	13%	55%	36
Registered Democrat	34%	6%	47%	13%	112
Registered Undeclared	55%	9%	19%	17%	227
Registered Republican	83%	4%	9%	4%	136
Democrat	36%	11%	38%	14%	200
Independent	55%	6%	16%	24%	105
Republican	77%	4%	7%	12%	207
Liberal	22%	11%	52%	14%	92
Moderate	61%	5%	19%	15%	228
Conservative	75%	6%	6%	12%	165
Extremely interested in election	66%	5%	23%	6%	206
Very interested	54%	9%	24%	13%	173
Somewhat/Not very interested	44%	7%	15%	34%	134
Union household	57%	4%	21%	18%	58
Non-union	56%	7%	21%	15%	453
10 yrs or less in NH	44%	8%	14%	34%	88
11 to 20 years	44%	10%	26%	20%	75
More than 20 years	63%	6%	22%	10%	346
18 to 34	47%	2%	14%	38%	48
35 to 49	53%	8%	19%	20%	137
50 to 64	54%	8%	27%	12%	192
65 and over	67%	7%	18%	8%	132
Male	65%	7%	17%	12%	251
Female	48%	7%	26%	19%	263
Get most news from Local TV news	56%	8%	11%	25%	135
National TV news	58%	8%	22%	12%	132
Radio	47%	10%	28%	15%	55
Newspapers	62%	1%	33%	4%	64
Internet	59%	5%	24%	12%	96
Other	45%	13%	14%	29%	24
High school or less	53%	10%	16%	22%	94
Some college	60%	6%	18%	16%	123
College graduate	59%	4%	23%	14%	191
Post-graduate	49%	11%	27%	13%	105
Attend services 1 or more/week	69%	7%	12%	12%	140
1-2 times a month	56%	5%	25%	14%	69
Less often	60%	5%	21%	14%	147
Never	44%	9%	27%	20%	139
North Country	65%	17%	9%	8%	40
Central / Lakes	55%	7%	25%	13%	78
Connecticut Valley	46%	4%	25%	25%	80
Mass Border	56%	7%	21%	16%	142
Seacoast	55%	8%	21%	16%	91
Manchester Area	62%	5%	21%	11%	84
First Cong. Dist	57%	6%	23%	14%	262
Second Cong. Dist	55%	8%	20%	17%	253

**Favorability Rating – Senator Jeanne Shaheen**

	<u>Favorable</u> 49%	<u>Neutral</u> 5%	<u>Unfavorable</u> 35%	<u>DK</u> 11%	<u>(N)</u> 515
<b>STATEWIDE</b>					
Likely Voter	50%	5%	36%	10%	476
Non-Likely Voter	43%	12%	20%	25%	36
Registered Democrat	88%	4%	4%	4%	112
Registered Undeclared	50%	6%	29%	14%	227
Registered Republican	19%	5%	70%	6%	136
Democrat	78%	5%	6%	11%	200
Independent	55%	5%	28%	12%	105
Republican	17%	6%	65%	11%	207
Liberal	87%	6%	2%	6%	92
Moderate	56%	6%	27%	11%	228
Conservative	22%	4%	63%	12%	165
Extremely interested in election	44%	5%	47%	5%	206
Very interested	55%	7%	30%	8%	173
Somewhat/Not very interested	51%	4%	20%	25%	134
Union household	53%	6%	31%	10%	58
Non-union	48%	5%	35%	11%	453
10 yrs or less in NH	48%	6%	26%	21%	88
11 to 20 years	50%	5%	35%	10%	75
More than 20 years	49%	5%	37%	9%	346
18 to 34	43%	5%	26%	27%	48
35 to 49	51%	4%	38%	8%	137
50 to 64	52%	7%	31%	10%	192
65 and over	46%	5%	40%	9%	132
Male	42%	6%	40%	11%	251
Female	55%	4%	29%	11%	263
Get most news from Local TV news	48%	7%	31%	14%	135
National TV news	45%	7%	39%	10%	132
Radio	49%	6%	35%	10%	55
Newspapers	58%	1%	34%	7%	64
Internet	55%	4%	32%	9%	96
Other	32%	0%	49%	19%	24
High school or less	41%	9%	36%	14%	94
Some college	49%	5%	32%	14%	123
College graduate	49%	5%	36%	10%	191
Post-graduate	55%	4%	33%	7%	105
Attend services 1 or more/week	40%	4%	46%	11%	140
1-2 times a month	42%	1%	38%	20%	69
Less often	55%	6%	30%	8%	147
Never	52%	8%	29%	11%	139
North Country	57%	4%	18%	21%	40
Central / Lakes	45%	7%	38%	10%	78
Connecticut Valley	56%	3%	25%	15%	80
Mass Border	43%	7%	41%	9%	142
Seacoast	57%	6%	30%	7%	91
Manchester Area	44%	3%	42%	12%	84
First Cong. Dist	49%	6%	35%	10%	262
Second Cong. Dist	49%	5%	34%	12%	253