

# THE GRANITE STATE POLL

## THE UNIVERSITY OF NEW HAMPSHIRE SURVEY CENTER

### WHAT DEFICIT? NH LARGELY UNAWARE OF STATE BUDGET PROBLEMS

May 12, 2008

By: Andrew E. Smith, Ph.D.  
UNH Survey Center  
www.unh.edu/survey-center  
603/862-2226

DURHAM, NH – New Hampshire residents are largely unaware of the state’s budget situation but view legalized gambling as the most desirable among a series of relatively unpopular revenue options.

These findings are based on the latest **Granite State Poll**,\* conducted by the University of New Hampshire Survey Center. Five hundred (500) randomly selected New Hampshire adults were interviewed by telephone between April 25 and April 30, 2008. The margin of sampling error for the survey is +/-4.4 percent. Included was a subsample of 456 likely November voters (margin of sampling error, +/- 4.6%).

#### Awareness of NH Budget Realities

Several reports in recent months have reached the conclusion that New Hampshire faces an increasing state budget deficit. Governor Lynch has already made one round of budget cuts from state agencies and they face another round of cuts in coming months. But despite the concerns in Concord, most New Hampshire residents remain only moderately aware of the state’s budget difficulties. In the most recent Granite State Poll, only 17% said they have heard a lot about the state’s budget difficulties, 59% say they have heard a little, 23% said they have heard nothing at all, 1% and say they don’t know.

#### Political Realities

New Hampshire is one of only two states that have neither a state income tax nor a sales tax and revenues are cobbled together primarily from a combination of business taxes, room and meals taxes, revenues from the sales of alcohol, lottery tickets, and a state wide property tax for primary and secondary education. There has been debate for decades about implementing a “broad base” tax in New Hampshire, either an income tax or a sales tax, but proponents of these changes have not had the political support either in Concord or from the voters of New Hampshire to get them passed.

And while it is clear that most New Hampshire residents are not at all happy with property taxes as a long term funding solution, they also do not want either an income tax or a sales tax and would be more likely to vote against a candidate for State Senate who favored any of these revenue options. When asked if they would be more likely or less likely to vote for a candidate who favored increasing property taxes as a long term funding solution for the state, only 6% of New Hampshire adults say they would be more likely to vote for a State Senate candidate who favored this position, 73% said they would be more likely to vote against, 14% said it would make no difference in their vote, and 4% sat they don’t know.

While not as unpopular as increased property taxes, only 23% of New Hampshire adults say they would be more likely to vote for a State Senate candidate who favored an income tax, 59% said they would be more likely to vote against, 16% said it would make no difference in their vote, and 2% said they don’t know.

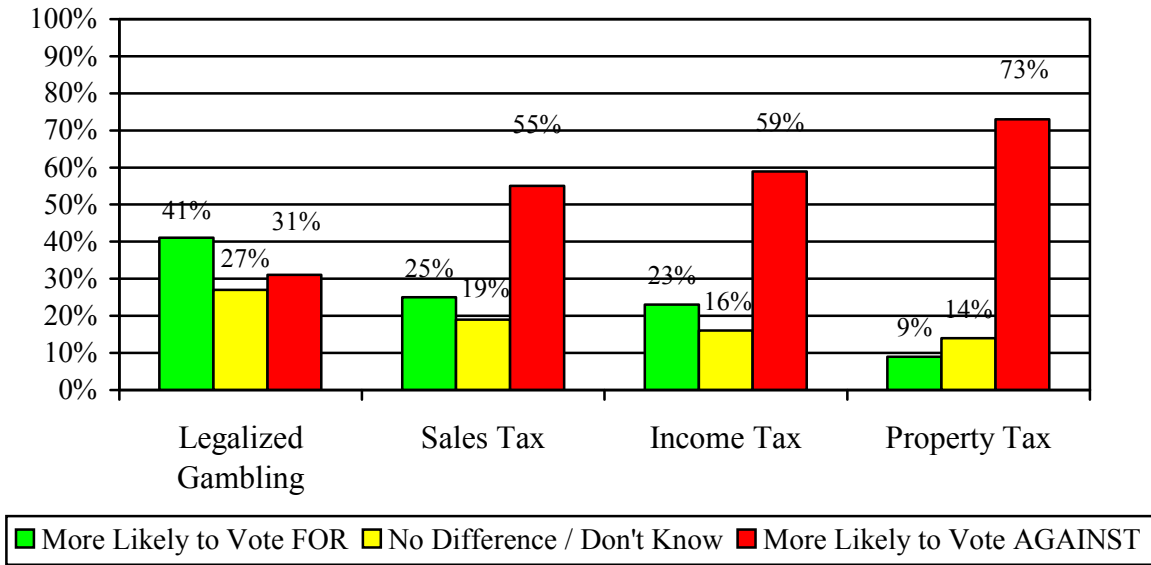
A sales tax is not a popular position either – only 25% of state residents say they would be more likely to vote for a State Senate candidate who favored a sales tax, 55% say they would be more likely to vote against, 19% say it would make little difference in their vote, and 1% don’t know.

The only revenue option that is somewhat politically popular is expanding legal gambling – 41% say they would be more likely to vote for a State Senate candidate who favored legalized gambling, 31% said they would be more likely to vote against, 27% said it would make little difference in their vote, and 1% don’t know. And when asked specifically if they would be bothered should the state legalize gambling, only 30% said they would be bothered, 68% said they would not be bothered, and 2% said they didn’t know.

---

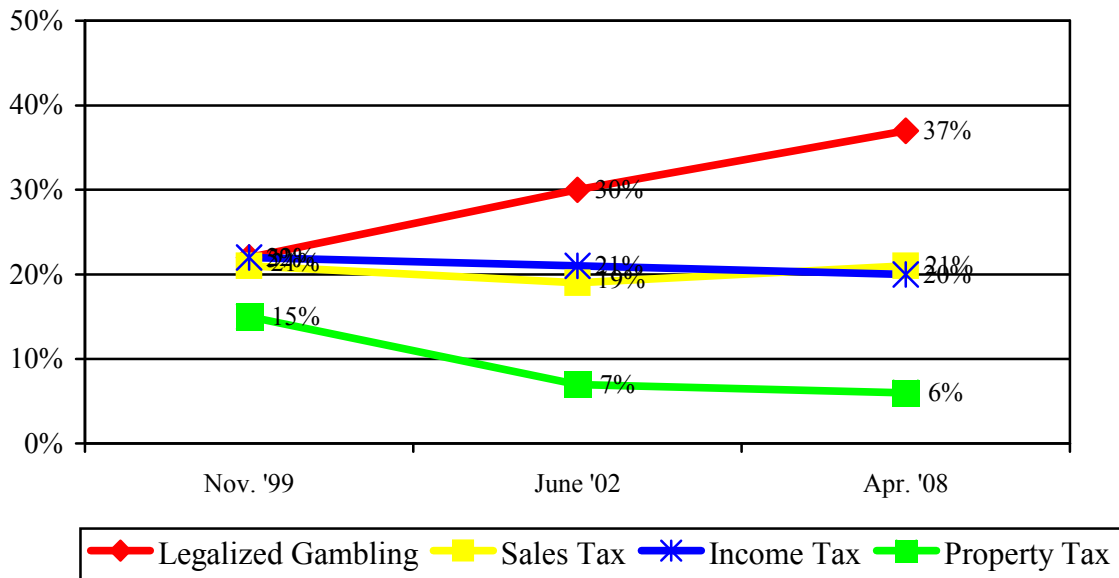
\* We ask that this copyrighted information be referred to as *the Granite State Poll*, conducted by the University of New Hampshire Survey Center.

### More Likely to Vote For/Against State Senator who Favored ...?



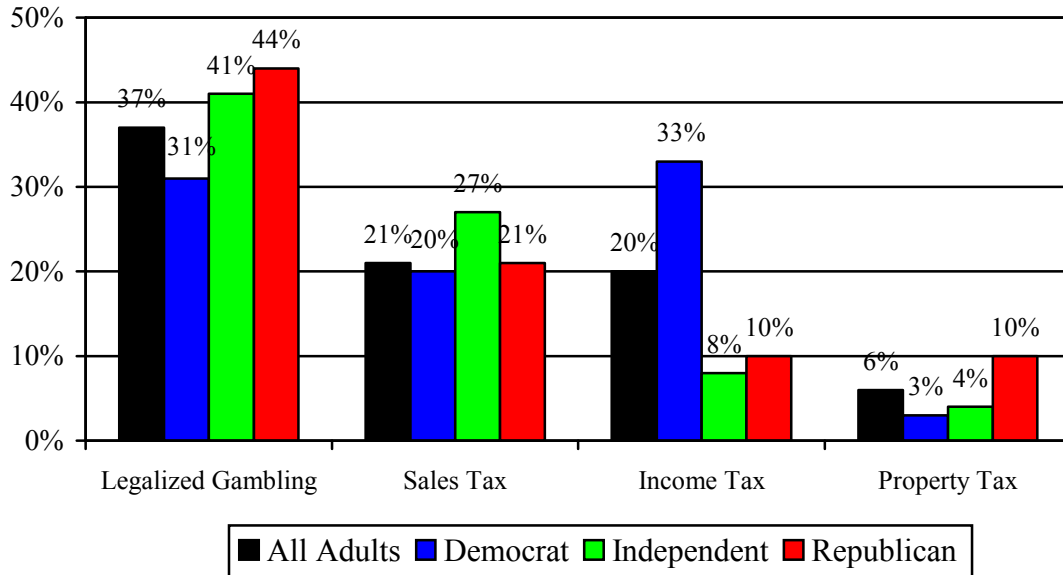
When asked to choose which of these potential solutions was closest to their own position, a small plurality (37%) chose legalized gambling, 21% said a sales tax, 20% said an income tax, 6% favored increasing the property tax, 10% favored cutting state spending, 1% preferred some combination of these, and 3% said they were unsure. The percentage of New Hampshire adults who favor legalized gambling as a revenue option has increased steadily since November 1999 while support for an income or sales tax has remained flat and support for increased property taxes has dropped.

### Funding Option Closest to Your Position



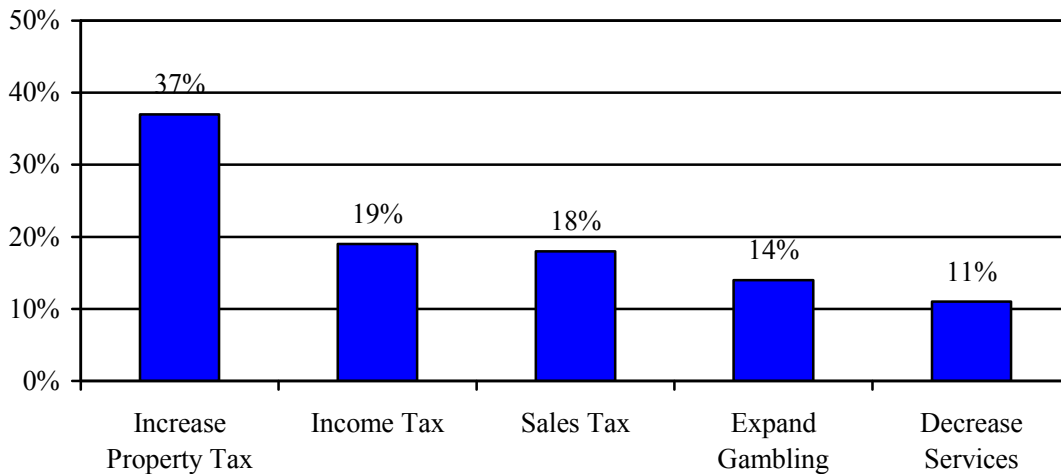
There are some significant political differences in support for different funding options. Democrats are significantly more likely to favor an income tax, Independents somewhat more likely to favor a sales tax and Republicans most likely to favor legalized gambling.

**Funding Option Closest to Your Position**



Many people have expressed concern that New Hampshire will lose its special quality of life with any significant revenue change. When asked which change in state funding would be most harmful to New Hampshire's quality of life, the plurality of Granite State adults (37%) said that an increase in property taxes would be most harmful followed by an income tax (19%), a sales tax (18%), expanding legal gambling at racetracks (14%), and decreasing state services (11%).

**Which Would be Most Harmful to Quality of Life in NH?**



## Granite State Poll Methodology

These findings are based on the latest **Granite State Poll** conducted by the University of New Hampshire Survey Center. Five hundred (500) randomly selected New Hampshire adults were interviewed by telephone between April 25 and April 30, 2008. The margin of sampling error for the survey is +/-4.4 percent. Included was a subsample of 456 likely November voters (margin of sampling error, +/- 4.6%).

The data have been weighted to adjust for numbers of adults and telephone lines within households, respondent sex, and region of the state. In addition to potential sampling error, all surveys have other potential sources of non-sampling error including question order effects, question wording effects, and non-response.

“Let’s talk for a minute and talk about the state budget situation. How much would you say you have heard or read about New Hampshire’s projected budget shortfall ... a lot ... a little ... or nothing at all?”

	<u>Apr. '08</u>
HEARD A LOT	17%
HEARD A LITTLE	59%
NOTHING AT ALL	23%
DK / UNSURE – DO NOT PROBE	1%
	(N=498)

“Thinking about life in New Hampshire, which of the following do you think would be most harmful to the quality of life in New Hampshire ... implementing an income tax ... implementing a sales tax ... increasing property taxes ... decreasing services the state provides ... or expanding legal gambling at racetracks in New Hampshire?” ROTATE RESPONSES

	<u>Apr. '08</u>
INCREASE PROPERTY TAX	37%
INCOME TAX	19%
SALES TAX	18%
EXPANDING LEGAL GAMBLING	14%
DECREASING STATE SERVICES	11%
OTHER – SPECIFY	1%
DON'T KNOW	1%
	(N=498)

“Would it bother you if the state legalized gambling?”

	<u>Apr. '08</u>
YES – WOULD BOTHER ME	30%
NO – WOULD NOT BOTHER ME	68%
DK / NOT SURE	2%
	(N=500)

“Many people think that in the long run, a different means of funding the state government will have to be found. There have been several proposals made by state legislators to fund the state and these proposals rely on different sources of revenue. As I read each one, please tell me if you would be more likely or less likely to vote for your state Senator if they favored that position, or if it would make little difference in your vote. Would you be more likely or less likely to vote for your state Senator if they favored ... (INCOME TAX, SALES TAX, LEGALIZING GAMBLING, PROPERTY TAX) to fund the state, or would that make little difference in your vote?” ROTATE QUESTIONS

**Vote for or Against State Senator who Favored ...**

	<b>More Likely to Vote For</b>			<b>No Difference Don't Know</b>			<b>More Likely to Vote Against</b>		
	<b><u>11/99</u></b>	<b><u>6/02</u></b>	<b><u>4/08</u></b>	<b><u>11/99</u></b>	<b><u>6/02</u></b>	<b><u>4/08</u></b>	<b><u>11/99</u></b>	<b><u>6/02</u></b>	<b><u>4/08</u></b>
Revenue from Gambling	36%	40%	41%	20%	21%	28%	44%	39%	31%
Sales Tax	35%	32%	25%	18%	15%	20%	47%	52%	55%
Income Tax	32%	32%	23%	17%	14%	18%	50%	54%	59%
State-wide Property Tax	19%	16%	9%	24%	25%	18%	56%	58%	73%

“Which of these options is closest to your opinion of what should be done about funding the state of New Hampshire ... an income tax ... a sales tax ... a state-wide property tax ... or revenues from legalized gambling?” ROTATE RESPONSES

	<b><u>Nov. 1999</u></b>	<b><u>June 2002</u></b>	<b><u>April 2008</u></b>
Revenue from Gambling	22%	30%	37%
Sales Tax	21%	19%	21%
Income Tax	22%	21%	20%
Cut Spending	16%	15%	10%
State-wide Property Tax/Current Law	15%	7%	6%
Combination	1%	4%	1%
Don't Know	3%	5%	3%
	(N=686)	(N=619)	(N=490)

**Heard of NH Budget Shortfall?**

	<b>Heard A Lot</b>	<b>Heard A Little</b>	<b>Nothing At All</b>	<b>Don't Know</b>	<b>(N=)</b>
<b>STATEWIDE</b>	<b>17%</b>	<b>59%</b>	<b>23%</b>	<b>1%</b>	<b>498</b>
Registered Democrat	17%	60%	22%	2%	134
Undeclared	17%	62%	21%	0%	210
Registered Republican	19%	58%	23%	1%	119
Not registered	22%	46%	32%	0%	30
Democrat	16%	59%	23%	1%	222
Independent	18%	58%	23%	1%	89
Republican	19%	60%	21%	0%	180
Liberal	22%	62%	15%	1%	77
Moderate	14%	64%	21%	1%	239
Conservative	20%	51%	29%	0%	156
Male	21%	60%	19%	0%	240
Female	14%	59%	26%	1%	257
18 to 34	13%	37%	50%	0%	33
35 to 49	14%	57%	29%	0%	140
50 to 64	19%	68%	13%	0%	199
65 and over	20%	53%	23%	3%	106
High school or less	18%	57%	25%	0%	128
Some college	15%	54%	30%	2%	113
College graduate	20%	59%	20%	1%	170
Post-graduate	15%	71%	14%	0%	82
Married	17%	64%	19%	0%	332
Divorced/separated	17%	52%	30%	2%	103
Never married	21%	44%	33%	2%	55
Protestant	18%	59%	22%	1%	194
Catholic	16%	56%	27%	1%	174
Other	18%	61%	21%	0%	100
10 years or less in NH	16%	55%	29%	0%	67
11 to 20 years	21%	55%	23%	1%	69
More than 20 years	17%	61%	21%	1%	355
North Country	17%	52%	32%	0%	45
Central/Lakes	26%	60%	15%	0%	86
Connecticut Valley	13%	58%	28%	1%	79
Mass Border	12%	61%	26%	1%	130
Seacoast	13%	58%	27%	2%	79
Manchester Area	25%	63%	10%	2%	79
1st E.C. District	14%	58%	28%	1%	103
2nd E.C. District	26%	54%	19%	0%	111
3rd E.C. District	14%	58%	25%	2%	96
4th E.C. District	15%	65%	19%	0%	83
5th E.C. District	16%	62%	22%	1%	104

**Most Harmful to NH Quality of Life - 1st Response**

	<u>Income Tax</u> 19%	<u>Sales Tax</u> 18%	<u>+ Prop. Tax</u> 37%	<u>Cut Services</u> 11%	<u>Expand Gambling</u> 14%	<u>Other</u> 1%	<u>Don't Know</u> 1%	<u>(N=)</u> 498
<b>STATEWIDE</b>								
Registered Democrat	8%	18%	40%	14%	17%	2%	1%	133
Undeclared	19%	17%	40%	10%	12%	0%	2%	210
Registered Republican	30%	19%	30%	7%	14%	0%	0%	120
Not registered	18%	25%	30%	13%	14%	0%	0%	29
Democrat	9%	18%	38%	15%	17%	1%	1%	222
Independent	21%	17%	44%	9%	6%	1%	1%	87
Republican	29%	18%	32%	6%	13%	0%	1%	182
Liberal	11%	15%	37%	21%	15%	0%	2%	76
Moderate	17%	14%	41%	12%	13%	1%	1%	238
Conservative	25%	24%	32%	3%	15%	0%	1%	158
Male	24%	20%	35%	6%	12%	1%	2%	241
Female	14%	16%	39%	15%	16%	0%	0%	256
18 to 34	21%	31%	35%	10%	3%	0%	0%	33
35 to 49	15%	17%	43%	9%	15%	0%	0%	141
50 to 64	19%	17%	37%	13%	12%	0%	2%	200
65 and over	19%	16%	33%	8%	19%	3%	2%	106
High school or less	15%	18%	38%	6%	17%	2%	4%	126
Some college	22%	18%	37%	8%	14%	0%	1%	114
College graduate	15%	21%	40%	9%	14%	0%	0%	171
Post-graduate	26%	11%	31%	24%	8%	1%	0%	82
Married	16%	19%	41%	10%	11%	0%	2%	332
Divorced/separated	20%	14%	33%	12%	20%	1%	1%	103
Never married	26%	20%	21%	11%	20%	0%	1%	55
Protestant	18%	18%	37%	11%	16%	0%	1%	194
Catholic	20%	18%	40%	5%	13%	2%	2%	174
Other	17%	16%	39%	15%	12%	0%	2%	100
10 years or less in NH	33%	12%	27%	13%	14%	1%	0%	65
11 to 20 years	16%	23%	48%	9%	4%	0%	0%	69
More than 20 years	16%	18%	37%	11%	16%	1%	2%	356
North Country	24%	20%	26%	13%	17%	0%	0%	45
Central/Lakes	15%	19%	49%	6%	9%	0%	2%	88
Connecticut Valley	8%	16%	45%	18%	14%	0%	0%	79
Mass Border	22%	22%	35%	8%	11%	2%	1%	130
Seacoast	24%	15%	27%	7%	24%	1%	2%	79
Manchester Area	18%	16%	36%	15%	12%	0%	3%	78
1st E.C. District	16%	19%	38%	11%	16%	0%	0%	104
2nd E.C. District	18%	15%	43%	10%	11%	0%	2%	111
3rd E.C. District	20%	21%	26%	11%	19%	1%	2%	97
4th E.C. District	16%	19%	36%	13%	12%	1%	2%	82
5th E.C. District	22%	17%	41%	9%	10%	1%	1%	104

**Most Harmful to NH Quality of Life - Two Possible Responses**

	<b>Income Tax</b>	<b>Sales Tax</b>	<b>+ Prop. Tax</b>	<b>Cut Services</b>	<b>Expand Gambling</b>	<b>Other</b>	<b>Don't Know</b>	<b>(N=)</b>
<b>STATEWIDE</b>	<b>34%</b>	<b>39%</b>	<b>56%</b>	<b>23%</b>	<b>25%</b>	<b>1%</b>	<b>2%</b>	<b>498</b>
Registered Democrat	20%	36%	63%	32%	25%	2%	2%	133
Undeclared	34%	39%	57%	22%	25%	1%	2%	210
Registered Republican	47%	45%	47%	14%	25%	0%	1%	120
Not registered	42%	31%	47%	19%	25%	0%	0%	29
Democrat	19%	34%	59%	31%	29%	2%	2%	222
Independent	43%	39%	62%	20%	20%	2%	1%	87
Republican	48%	46%	48%	14%	22%	0%	1%	182
Liberal	20%	34%	61%	40%	29%	0%	2%	76
Moderate	31%	36%	59%	28%	22%	1%	1%	238
Conservative	47%	46%	48%	7%	25%	0%	2%	158
Male	40%	46%	53%	15%	21%	2%	2%	241
Female	29%	33%	58%	30%	28%	1%	1%	256
18 to 34	33%	53%	60%	21%	14%	4%	0%	33
35 to 49	38%	33%	59%	28%	23%	0%	0%	141
50 to 64	32%	43%	60%	23%	21%	0%	2%	200
65 and over	30%	36%	45%	16%	36%	4%	4%	106
High school or less	35%	36%	57%	17%	24%	3%	5%	126
Some college	36%	38%	55%	19%	24%	2%	1%	114
College graduate	35%	47%	55%	19%	27%	0%	0%	171
Post-graduate	30%	29%	58%	46%	22%	1%	0%	82
Married	34%	40%	60%	23%	21%	1%	2%	332
Divorced/separated	30%	37%	49%	18%	33%	2%	2%	103
Never married	43%	37%	39%	30%	35%	1%	1%	55
Protestant	30%	42%	54%	24%	28%	1%	1%	194
Catholic	36%	39%	56%	19%	23%	2%	3%	174
Other	34%	31%	65%	26%	22%	0%	2%	100
10 years or less in NH	49%	28%	47%	27%	24%	1%	0%	65
11 to 20 years	38%	42%	65%	19%	19%	2%	0%	69
More than 20 years	30%	41%	56%	23%	26%	1%	2%	356
North Country	33%	45%	40%	16%	31%	0%	0%	45
Central/Lakes	32%	30%	64%	21%	21%	1%	2%	88
Connecticut Valley	19%	35%	68%	29%	29%	2%	0%	79
Mass Border	45%	48%	52%	21%	19%	2%	1%	130
Seacoast	35%	35%	55%	17%	37%	1%	2%	79
Manchester Area	34%	41%	49%	32%	17%	0%	4%	78
1st E.C. District	29%	37%	56%	20%	30%	0%	0%	104
2nd E.C. District	31%	31%	62%	25%	26%	1%	3%	111
3rd E.C. District	35%	43%	52%	21%	27%	1%	2%	97
4th E.C. District	39%	45%	47%	25%	18%	1%	2%	82
5th E.C. District	38%	42%	59%	23%	22%	3%	1%	104

### Bother You if Gambling Were Legalized?

	<u>Yes</u> 30%	<u>No</u> 68%	<u>Don't Know</u> 2%	<u>(N=)</u> 500
<b>STATEWIDE</b>				
Registered Democrat	38%	58%	4%	134
Undeclared	26%	72%	2%	211
Registered Republican	32%	68%	0%	120
Not registered	18%	82%	0%	30
Democrat	33%	63%	4%	223
Independent	23%	76%	1%	89
Republican	28%	71%	0%	182
Liberal	32%	65%	3%	77
Moderate	26%	71%	2%	240
Conservative	34%	65%	1%	158
Male	24%	76%	0%	242
Female	36%	61%	3%	258
18 to 34	19%	73%	8%	33
35 to 49	30%	70%	0%	142
50 to 64	28%	70%	2%	200
65 and over	36%	62%	2%	106
High school or less	30%	69%	0%	128
Some college	29%	69%	2%	115
College graduate	29%	69%	2%	171
Post-graduate	31%	67%	2%	82
Married	27%	71%	2%	334
Divorced/separated	33%	66%	1%	104
Never married	41%	55%	3%	55
Protestant	37%	60%	2%	194
Catholic	23%	75%	1%	174
Other	29%	68%	2%	102
10 years or less in NH	33%	66%	1%	67
11 to 20 years	25%	73%	2%	69
More than 20 years	30%	68%	2%	357
North Country	32%	67%	1%	45
Central/Lakes	36%	62%	2%	88
Connecticut Valley	30%	69%	1%	79
Mass Border	26%	73%	1%	130
Seacoast	37%	62%	1%	80
Manchester Area	22%	74%	5%	79
1st E.C. District	34%	65%	1%	104
2nd E.C. District	32%	65%	2%	111
3rd E.C. District	28%	68%	4%	97
4th E.C. District	22%	78%	1%	83
5th E.C. District	32%	67%	1%	104

**Vote For / Against State Senator if Favored Income Tax**

	<b>More Likely Vote For 23%</b>	<b>No Difference 16%</b>	<b>More Likely Against 59%</b>	<b>Don't Know 2%</b>	<b>(N=)</b>
<b>STATEWIDE</b>					<b>497</b>
Registered Democrat	33%	18%	46%	3%	134
Undeclared	23%	14%	62%	1%	209
Registered Republican	13%	14%	71%	2%	118
Not registered	14%	32%	52%	2%	30
Democrat	35%	19%	45%	2%	222
Independent	16%	18%	61%	5%	87
Republican	11%	11%	77%	1%	181
Liberal	43%	22%	33%	1%	77
Moderate	24%	19%	54%	3%	237
Conservative	11%	8%	81%	0%	157
Male	21%	17%	60%	2%	238
Female	24%	16%	58%	2%	258
18 to 34	14%	34%	47%	6%	33
35 to 49	17%	15%	68%	0%	142
50 to 64	26%	15%	57%	2%	198
65 and over	28%	14%	55%	3%	104
High school or less	21%	21%	56%	2%	127
Some college	15%	18%	64%	3%	115
College graduate	22%	15%	61%	2%	168
Post-graduate	39%	6%	55%	0%	82
Married	23%	15%	60%	2%	330
Divorced/separated	27%	15%	55%	2%	104
Never married	13%	25%	60%	2%	55
Protestant	26%	15%	58%	1%	191
Catholic	16%	19%	62%	3%	174
Other	30%	13%	54%	3%	102
10 years or less in NH	20%	13%	66%	1%	66
11 to 20 years	21%	22%	57%	0%	68
More than 20 years	24%	16%	58%	3%	355
North Country	21%	17%	61%	0%	45
Central/Lakes	28%	15%	57%	1%	88
Connecticut Valley	37%	17%	43%	3%	77
Mass Border	15%	16%	67%	2%	130
Seacoast	18%	13%	67%	2%	78
Manchester Area	21%	21%	56%	2%	78
1st E.C. District	27%	20%	52%	1%	104
2nd E.C. District	31%	12%	54%	2%	111
3rd E.C. District	19%	12%	68%	2%	96
4th E.C. District	11%	27%	60%	2%	83
5th E.C. District	21%	13%	63%	3%	102

**Vote For / Against State Senator if Favored Sales Tax**

	<b>More Likely Vote For 25%</b>	<b>No Difference 19%</b>	<b>More Likely Against 55%</b>	<b>Don't Know 1%</b>	<b>(N=) 500</b>
<b>STATEWIDE</b>					
Registered Democrat	25%	21%	53%	1%	134
Undeclared	26%	18%	54%	1%	211
Registered Republican	24%	18%	57%	0%	120
Not registered	18%	23%	59%	0%	30
Democrat	27%	22%	50%	1%	223
Independent	26%	18%	55%	1%	89
Republican	22%	16%	60%	1%	182
Liberal	37%	19%	44%	0%	77
Moderate	24%	21%	54%	1%	240
Conservative	20%	17%	62%	1%	158
Male	26%	19%	54%	1%	242
Female	24%	19%	55%	1%	258
18 to 34	16%	21%	63%	0%	33
35 to 49	27%	21%	53%	0%	142
50 to 64	25%	14%	58%	2%	200
65 and over	27%	26%	47%	1%	106
High school or less	21%	23%	55%	1%	128
Some college	26%	22%	52%	1%	115
College graduate	24%	17%	58%	1%	171
Post-graduate	34%	15%	51%	0%	82
Married	26%	18%	55%	1%	334
Divorced/separated	25%	18%	56%	1%	104
Never married	21%	29%	49%	1%	55
Protestant	25%	20%	54%	1%	194
Catholic	25%	20%	53%	1%	174
Other	24%	15%	61%	0%	102
10 years or less in NH	23%	25%	49%	3%	67
11 to 20 years	24%	17%	59%	0%	69
More than 20 years	26%	19%	55%	1%	357
North Country	10%	27%	63%	0%	45
Central/Lakes	38%	14%	48%	0%	88
Connecticut Valley	35%	15%	49%	1%	79
Mass Border	16%	19%	63%	2%	130
Seacoast	28%	20%	50%	2%	80
Manchester Area	21%	23%	55%	0%	79
1st E.C. District	23%	19%	58%	1%	104
2nd E.C. District	38%	17%	45%	0%	111
3rd E.C. District	24%	15%	59%	2%	97
4th E.C. District	20%	17%	61%	2%	83
5th E.C. District	19%	28%	53%	1%	104

**Vote For / Against State Senator if Favored Increasing Property Tax**

	<b>More Likely Vote For</b>	<b>No Difference</b>	<b>More Likely Against</b>	<b>Don't Know</b>	<b>(N=)</b>
<b>STATEWIDE</b>	<b>9%</b>	<b>14%</b>	<b>73%</b>	<b>4%</b>	<b>500</b>
Registered Democrat	15%	10%	71%	4%	134
Undeclared	8%	13%	73%	6%	211
Registered Republican	6%	17%	73%	4%	120
Not registered	1%	22%	77%	0%	30
Democrat	11%	11%	73%	4%	223
Independent	7%	19%	69%	5%	89
Republican	8%	15%	73%	4%	182
Liberal	11%	14%	72%	4%	77
Moderate	9%	14%	73%	5%	240
Conservative	9%	16%	71%	4%	158
Male	10%	17%	68%	5%	242
Female	9%	11%	77%	4%	258
18 to 34	0%	18%	78%	4%	33
35 to 49	7%	13%	76%	4%	142
50 to 64	12%	15%	68%	6%	200
65 and over	11%	11%	74%	5%	106
High school or less	6%	18%	72%	4%	128
Some college	9%	8%	80%	4%	115
College graduate	7%	15%	72%	5%	171
Post-graduate	20%	11%	65%	5%	82
Married	9%	13%	73%	5%	334
Divorced/separated	11%	12%	72%	5%	104
Never married	5%	22%	71%	1%	55
Protestant	8%	11%	75%	6%	194
Catholic	9%	11%	76%	4%	174
Other	12%	19%	64%	5%	102
10 years or less in NH	8%	24%	63%	6%	67
11 to 20 years	5%	9%	82%	5%	69
More than 20 years	10%	13%	73%	4%	357
North Country	12%	14%	75%	0%	45
Central/Lakes	10%	10%	72%	8%	88
Connecticut Valley	9%	10%	78%	3%	79
Mass Border	5%	14%	75%	6%	130
Seacoast	12%	19%	67%	2%	80
Manchester Area	10%	17%	68%	5%	79
1st E.C. District	12%	10%	75%	3%	104
2nd E.C. District	10%	13%	71%	6%	111
3rd E.C. District	12%	13%	73%	2%	97
4th E.C. District	5%	25%	63%	7%	83
5th E.C. District	5%	11%	78%	6%	104

**Vote For / Against State Senator if Favored Increasing Legalized gambling**

	<b>More Likely Vote For</b>	<b>No Difference</b>	<b>More Likely Against</b>	<b>Don't Know</b>	<b>(N=)</b>
<b>STATEWIDE</b>	<b>41%</b>	<b>27%</b>	<b>31%</b>	<b>1%</b>	<b>500</b>
Registered Democrat	28%	33%	37%	2%	134
Undeclared	48%	26%	25%	1%	211
Registered Republican	41%	19%	39%	1%	120
Not registered	51%	33%	16%	0%	30
Democrat	32%	31%	35%	2%	223
Independent	56%	27%	16%	1%	89
Republican	44%	23%	33%	0%	182
Liberal	31%	37%	30%	2%	77
Moderate	43%	27%	29%	1%	240
Conservative	42%	23%	35%	0%	158
Male	47%	26%	25%	2%	242
Female	35%	28%	36%	1%	258
18 to 34	47%	41%	12%	0%	33
35 to 49	46%	23%	30%	1%	142
50 to 64	39%	32%	28%	1%	200
65 and over	38%	19%	40%	3%	106
High school or less	45%	24%	28%	2%	128
Some college	48%	25%	27%	0%	115
College graduate	36%	27%	35%	2%	171
Post-graduate	35%	34%	31%	0%	82
Married	43%	28%	28%	1%	334
Divorced/separated	35%	23%	38%	3%	104
Never married	40%	27%	33%	0%	55
Protestant	33%	28%	37%	1%	194
Catholic	48%	26%	24%	2%	174
Other	41%	27%	31%	1%	102
10 years or less in NH	42%	29%	29%	1%	67
11 to 20 years	49%	24%	27%	0%	69
More than 20 years	39%	28%	32%	2%	357
North Country	37%	25%	38%	0%	45
Central/Lakes	45%	26%	29%	0%	88
Connecticut Valley	32%	33%	35%	1%	79
Mass Border	45%	28%	25%	1%	130
Seacoast	35%	24%	37%	4%	80
Manchester Area	44%	27%	29%	1%	79
1st E.C. District	35%	30%	35%	1%	104
2nd E.C. District	42%	24%	35%	0%	111
3rd E.C. District	40%	27%	29%	3%	97
4th E.C. District	49%	26%	23%	2%	83
5th E.C. District	39%	30%	31%	1%	104

**Preferred Revenue Option**

	<u>Income Tax</u> 20%	<u>Sales Tax</u> 21%	<u>Prop. Tax</u> 6%	<u>Legalized Gambling</u> 37%	<u>Cut Spending</u> 10%	<u>Other</u> 1%	<u>Don't Know</u> 3%	<u>(N=)</u> 490
<b>STATEWIDE</b>								
Registered Democrat	34%	16%	6%	32%	7%	2%	3%	133
Undeclared	20%	22%	5%	37%	10%	1%	5%	207
Registered Republican	10%	27%	9%	41%	10%	1%	2%	115
Not registered	3%	13%	2%	51%	29%	0%	2%	30
Democrat	33%	20%	3%	31%	9%	1%	3%	220
Independent	8%	27%	4%	41%	10%	3%	7%	87
Republican	10%	21%	10%	44%	13%	1%	2%	177
Liberal	38%	14%	2%	32%	5%	2%	7%	77
Moderate	23%	22%	4%	39%	8%	2%	2%	237
Conservative	8%	24%	10%	38%	16%	0%	4%	152
Male	19%	18%	6%	39%	10%	3%	5%	238
Female	21%	24%	6%	36%	11%	0%	2%	252
18 to 34	9%	9%	6%	56%	8%	0%	12%	32
35 to 49	16%	30%	1%	40%	8%	0%	4%	141
50 to 64	23%	15%	10%	38%	11%	2%	2%	193
65 and over	22%	26%	5%	30%	13%	2%	2%	106
High school or less	15%	19%	5%	44%	13%	3%	1%	125
Some college	16%	24%	3%	39%	11%	1%	6%	113
College graduate	20%	23%	7%	36%	10%	1%	4%	168
Post-graduate	34%	18%	8%	31%	6%	1%	2%	81
Married	20%	21%	7%	38%	9%	2%	3%	327
Divorced/separated	24%	23%	3%	33%	14%	1%	3%	101
Never married	16%	18%	5%	45%	11%	1%	4%	55
Protestant	24%	26%	5%	32%	8%	0%	4%	189
Catholic	16%	16%	7%	46%	13%	2%	1%	172
Other	23%	20%	4%	35%	9%	1%	8%	100
10 years or less in NH	26%	19%	0%	38%	12%	1%	3%	64
11 to 20 years	16%	25%	1%	40%	15%	0%	3%	66
More than 20 years	20%	21%	8%	37%	9%	2%	4%	353
North Country	24%	21%	1%	38%	14%	0%	1%	45
Central/Lakes	22%	24%	4%	38%	8%	3%	2%	88
Connecticut Valley	31%	28%	4%	27%	6%	0%	4%	76
Mass Border	17%	20%	7%	38%	13%	2%	3%	126
Seacoast	15%	22%	6%	41%	5%	1%	10%	76
Manchester Area	16%	12%	13%	42%	16%	1%	0%	79
1st E.C. District	24%	24%	3%	35%	13%	0%	2%	102
2nd E.C. District	25%	23%	5%	33%	6%	2%	5%	108
3rd E.C. District	14%	23%	6%	44%	4%	1%	8%	96
4th E.C. District	15%	14%	14%	38%	17%	2%	1%	82
5th E.C. District	22%	22%	4%	37%	13%	1%	1%	101