

GRANITE STATE POLL

THE UNIVERSITY OF NEW HAMPSHIRE

May 13, 2008

BUSH APPROVAL STILL LOW IN NH

By: Andrew E. Smith, Ph.D.
UNH Survey Center
603/862-2226
www.unh.edu/survey-center

DURHAM, NH – President George W. Bush remains very unpopular in New Hampshire which will likely hurt Republican chances in November. Disapproval for his handling of the economy is at an all-time high.

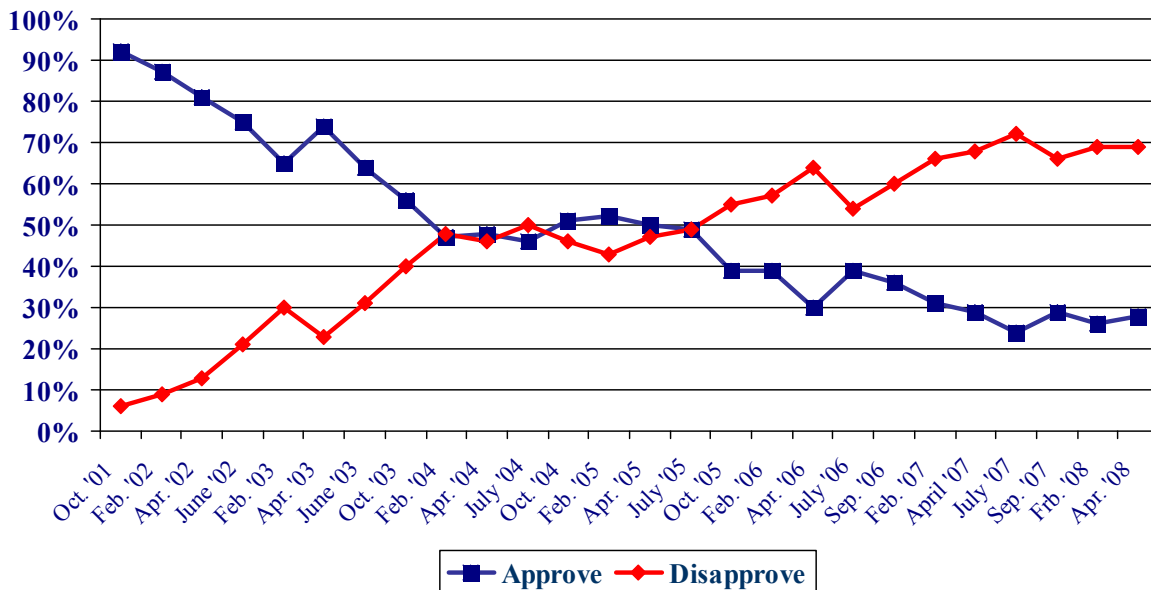
These findings are based on the latest **Granite State Poll**,* conducted by the University of New Hampshire Survey Center. Five hundred (500) randomly selected New Hampshire adults were interviewed by telephone between April 25 and April 30, 2008. The margin of sampling error for the survey is +/-4.4 percent.

Presidential Approval

With less than one year left in his presidency, President George W. Bush's approval rating in New Hampshire remains mired in Nixonian territory. In the most recent Granite State Poll, only 28% of New Hampshire adults say they approve of the job Bush is doing as president, 69% disapprove, and 3% are neutral. Bush's approval rating has been below 30 percent for the past year. The drop in Bush's approval rating is mirrored in national polls – an ABC News-Washington Post poll released this week 31% of adults nationwide said they approved of the job Bush is doing as president and 66% disapproved.

Only majorities of Republicans and conservatives approve of Bush's performance as President while 95% of Democrats and 67% of political Independents disapprove.

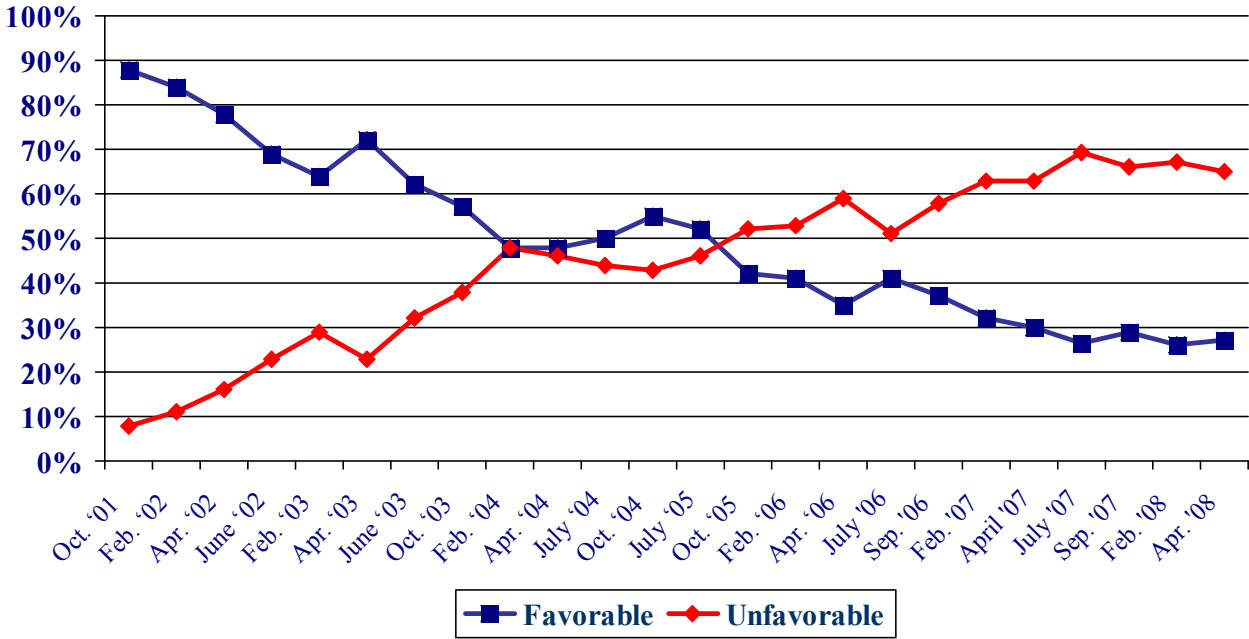
Presidential Approval – G.W. Bush



* We ask that this copyrighted information be referred to as *the Granite State Poll*, conducted by the University of New Hampshire Survey Center.

Bush's personal favorability rating is also near record lows. Only 27% of New Hampshire adults have a favorable opinion of Bush, 65% have an unfavorable opinion of him, and 7% are neutral or don't know. Bush's net favorability rating, the percentage having a favorable opinion minus the percentage having an unfavorable opinion, is an extremely low -38%. Bush's favorability rating has dropped due to a drop in support among Republicans – only 59% of Republicans say they have a favorable opinion of Bush, down from 66% in September.

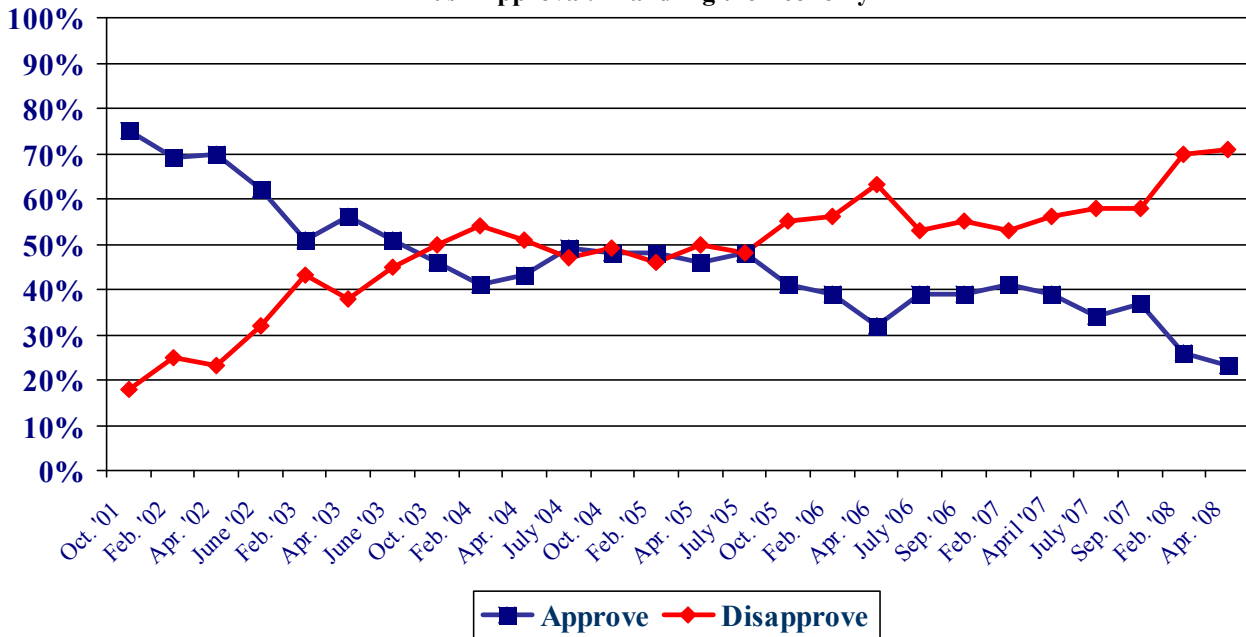
Favorability Ratings – G.W. Bush



Economic Approval Rating

The recent drop in Bush's approval rating can be tied to concerns about the economy. Only 23% of New Hampshire residents, a record low for his presidency, say they approve of the job President Bush is doing handling the economy, 71% disapprove, and 5% are neutral. The percentage of New Hampshire residents who approve of Bush's handling of the economy has dropped steadily over the past year. In particular, the percentages of Republicans who approve of Bush's handling of the economy has dropped from 78% in September to 55% in the most recent poll.

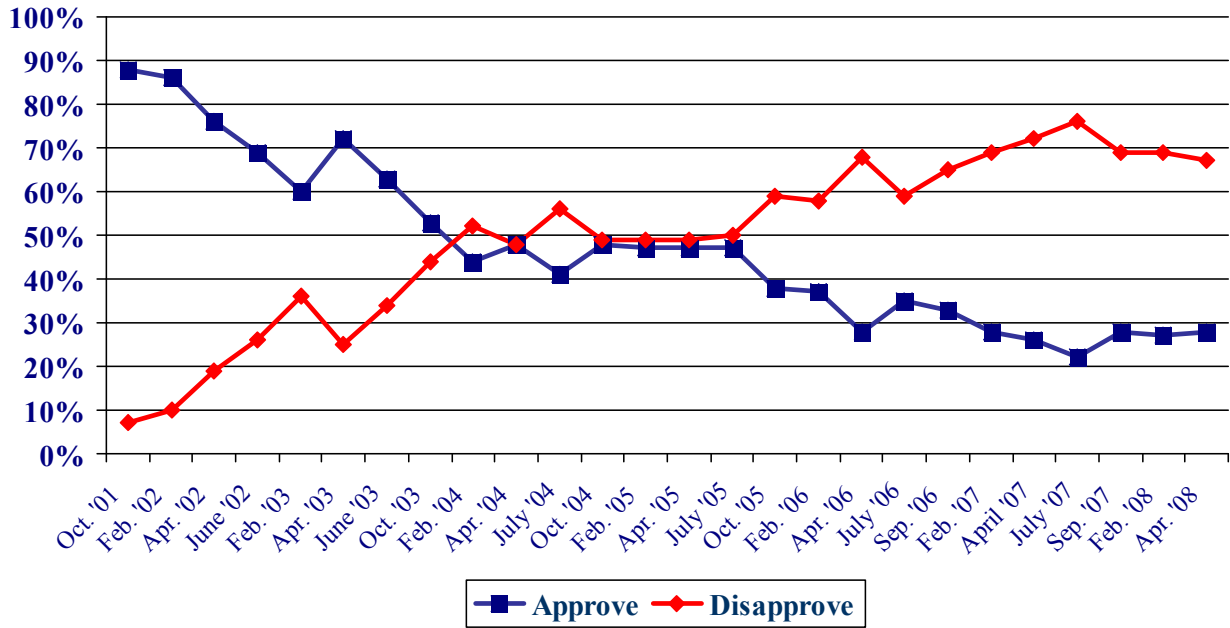
Bush Approval: Handling the Economy



Foreign Affairs

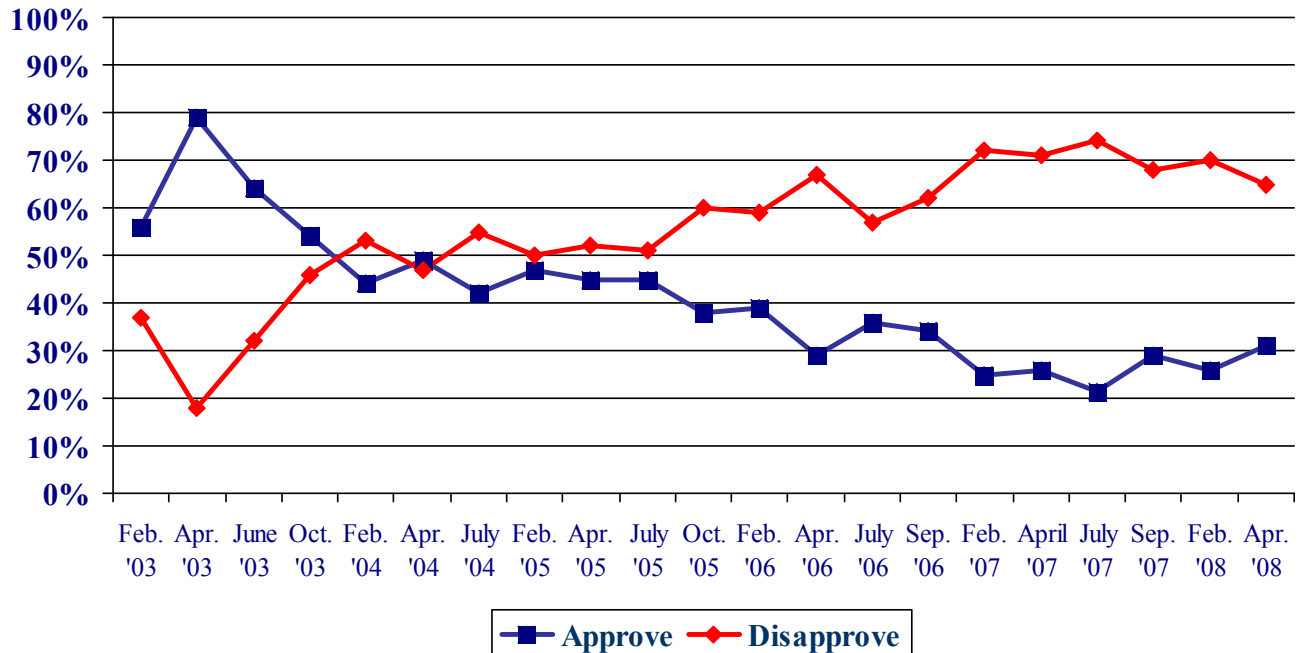
The Bush administration's foreign policy continues to be unpopular in New Hampshire. When asked about how the President is handling foreign affairs, only 28% of New Hampshire adults say they approve, 67% disapprove, and 5% are neutral.

Bush Approval: Foreign Affairs



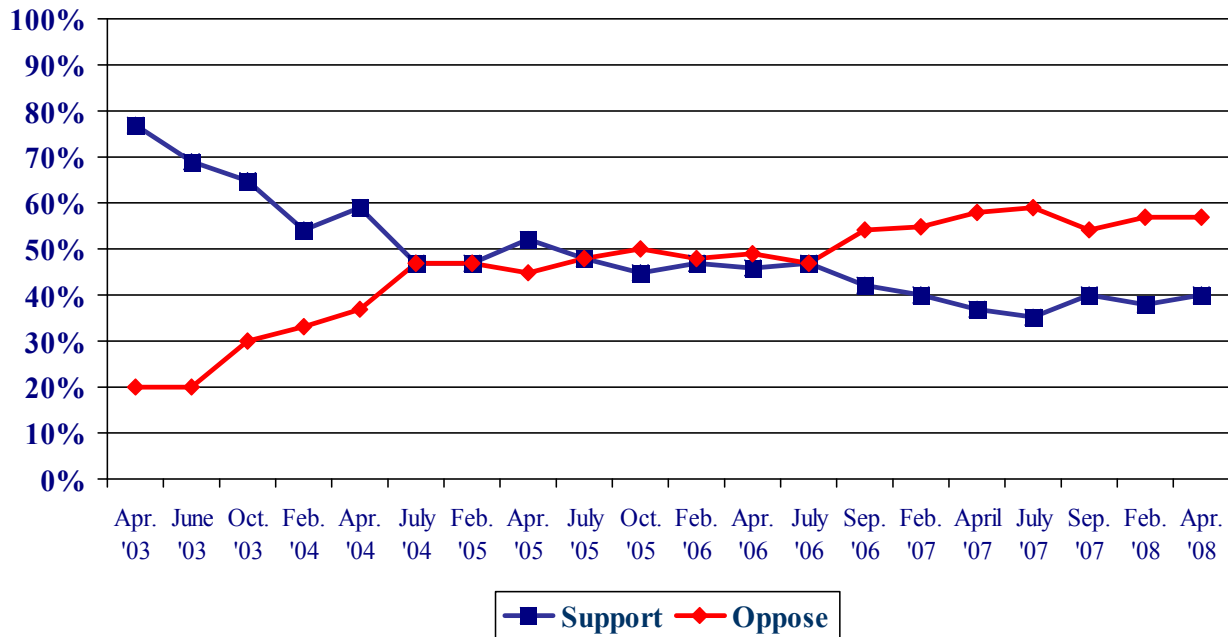
Regardless of whether the Iraq strategy of General David Petraeus is working or not Bush is not getting credit for any improvement. Only 31% of Granite State adults approve of the way Bush has handled the situation in Iraq, 65% disapprove, and 4% are neutral. And while these figures are very low, they represent a slight increase from February.

Bush Approval: Handling Situation in Iraq



Support for the U.S. having gone into Iraq in the first place has is also low. Currently, 40% of Granite Staters support the U.S. having gone to war in Iraq, 57% oppose the U.S. having gone to war, and 3% are neutral. But it is important to note that solid majorities of Republicans (69%) and conservatives (62%) continue to support the war in Iraq.

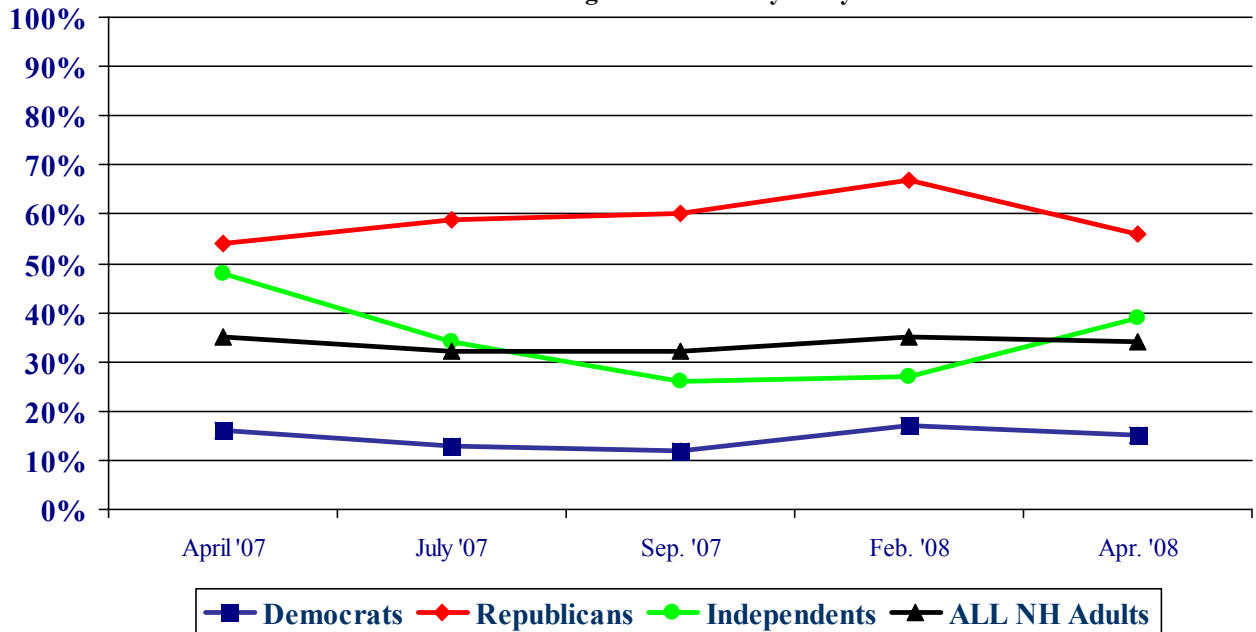
Support for War In Iraq



Can the US Win?

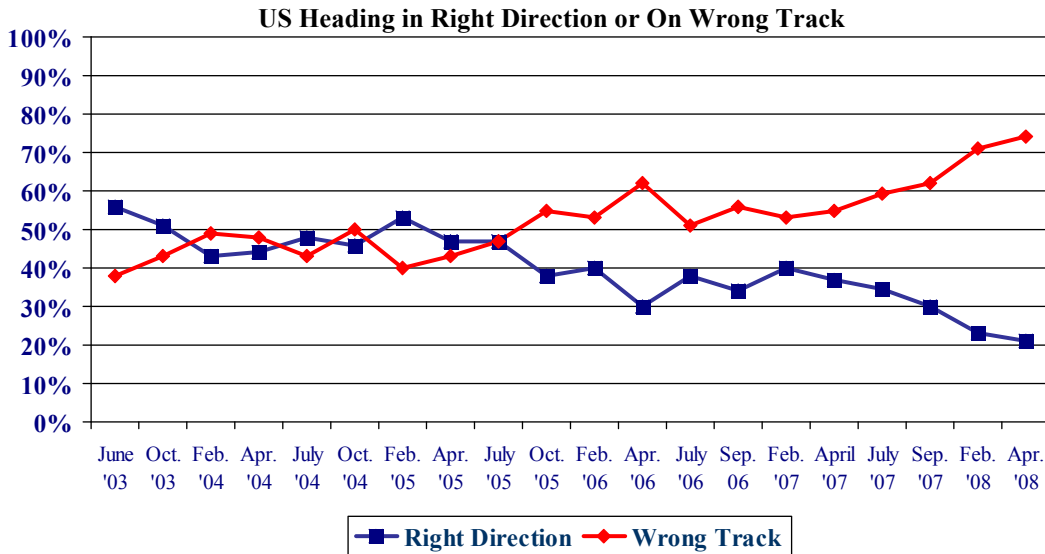
Most New Hampshire adults do not think the U.S. can win the war in Iraq. In the most recent Granite State Poll, only 34% believe the US can win the war in Iraq, 56% think the US cannot win the war, and 10% don't know. Just more than half of Republicans (56%) believe the US can win the war in Iraq while 39% of Independents and 15% of Democrats think the US can win in Iraq.

Percent Believing US Can Win by Party ID



Right Track – Wrong Track

Overall, New Hampshire residents are increasingly pessimistic about the direction the country is heading. Only 21%, a record low in New Hampshire, think things in this country are generally going in the right direction, 74% think things are seriously off on the wrong track, and 5% don't know. Even Republicans are pessimistic -- only 41% of Republicans think things are headed in the right direction while only 5% of Democrats and 23% of Independents think things are headed in the right direction.



Granite State Poll Methodology

These findings are based on the latest **Granite State Poll** conducted by the University of New Hampshire Survey Center. Five hundred (500) randomly selected New Hampshire adults were interviewed by telephone between April 25 and April 30, 2008. The margin of sampling error for the survey is +/-4.4 percent.

The data have been weighted to adjust for numbers of adults and telephone lines within households, respondent sex, and region of the state. In addition to potential sampling error, all surveys have other potential sources of non-sampling error including question order effects, question wording effects, and non-response.

Presidential Approval

“GENERALLY SPEAKING, do you approve or disapprove of the way President Bush is handling his job as president?”

| | <u>Approve</u> | <u>Neutral</u> | <u>Disapprove</u> | <u>(N)</u> |
|------------------|----------------|----------------|-------------------|--------------|
| Apr. '08 | 28% | 3% | 69% | (500) |
| Feb. '08 | 26% | 5% | 69% | (550) |
| Sep. '07 | 29% | 5% | 66% | (507) |
| July '07 | 24% | 4% | 72% | (523) |
| Apr. '07 | 29% | 3% | 68% | (512) |
| Feb. '07 | 31% | 4% | 66% | (529) |
| Sept. '06 | 36% | 3% | 60% | (507) |
| July '06 | 39% | 7% | 54% | (501) |
| Apr. '06 | 30% | 6% | 64% | (496) |
| Feb. '06 | 39% | 3% | 57% | (495) |
| Oct. '05 | 39% | 6% | 55% | (505) |
| July '05 | 49% | 4% | 47% | (498) |
| Apr. '05 | 50% | 3% | 47% | (483) |
| Feb. '05 | 52% | 4% | 43% | (533) |
| Oct. '04 | 51% | 3% | 46% | (567) |
| July '04 | 46% | 4% | 50% | (503) |
| Apr. '04 | 48% | 6% | 46% | (536) |
| Feb. '04 | 47% | 5% | 48% | (505) |
| Oct. '03 | 56% | 4% | 40% | (502) |
| June '03 | 64% | 5% | 31% | (511) |
| Apr. '03 | 71% | 6% | 23% | (503) |
| Feb. '03 | 65% | 4% | 30% | (646) |
| June '02 | 75% | 5% | 21% | (658) |
| Apr. '02 | 81% | 6% | 13% | (685) |
| Feb. '02 | 87% | 4% | 9% | (724) |
| Oct. '01 | 92% | 2% | 6% | (687) |

Presidential Approval – Economy

"GENERALLY SPEAKING, do you approve or disapprove of the way President Bush is handling THE ECONOMY?"

| | <u>Approve</u> | <u>Neutral</u> | <u>Disapprove</u> | <u>(N)</u> |
|------------------|----------------|----------------|-------------------|--------------|
| Apr. '08 | 23% | 5% | 71% | (499) |
| Feb. '08 | 26% | 4%% | 70% | (548) |
| Sep. '07 | 37% | 5% | 58% | (502) |
| July '07 | 34% | 8% | 58% | (518) |
| Apr. '07 | 39% | 5% | 56% | (512) |
| Feb. '07 | 41% | 5% | 53% | (529) |
| Sept. '06 | 39% | 6% | 55% | (508) |
| July '06 | 39% | 8% | 53% | (497) |
| Apr. '06 | 32% | 5% | 63% | (502) |
| Feb. '06 | 39% | 5% | 56% | (495) |
| Oct. '05 | 41% | 4% | 55% | (500) |
| July '05 | 48% | 4% | 48% | (495) |
| Apr. '05 | 46% | 5% | 50% | (490) |
| Feb. '05 | 48% | 5% | 46% | (534) |
| Oct. '04 | 48% | 3% | 49% | (568) |
| July '04 | 49% | 5% | 47% | (499) |
| Apr. '04 | 43% | 6% | 51% | (538) |
| Feb. '04 | 41% | 5% | 54% | (506) |
| Oct. '03 | 46% | 4% | 50% | (499) |
| June '03 | 51% | 3% | 45% | (512) |
| Apr. '03 | 56% | 6% | 38% | (502) |
| Feb. '03 | 51% | 6% | 43% | (644) |
| June '02 | 62% | 6% | 32% | (644) |
| Apr. '02 | 70% | 7% | 23% | (688) |
| Feb. '02 | 69% | 6% | 25% | (725) |
| Oct. '01 | 75% | 8% | 18% | (684) |

Presidential Approval - Foreign Affairs

"GENERALLY SPEAKING, do you approve or disapprove of the way President Bush is handling FOREIGN AFFAIRS?"

| | <u>Approve</u> | <u>Neutral</u> | <u>Disapprove</u> | <u>(N)</u> |
|------------------|----------------|----------------|-------------------|--------------|
| Apr. '08 | 28% | 5% | 67% | (498) |
| Feb. '08 | 27% | 4% | 69% | (546) |
| Sep. '07 | 28% | 3% | 69% | (505) |
| July '07 | 22% | 3% | 74% | (519) |
| Apr. '07 | 26% | 2% | 72% | (510) |
| Feb. '07 | 28% | 3% | 69% | (529) |
| Sept. '06 | 33% | 2% | 65% | (506) |
| July '06 | 35% | 6% | 59% | (497) |
| Apr. '06 | 28% | 4% | 68% | (500) |
| Feb. '06 | 37% | 5% | 58% | (495) |
| Oct. '05 | 38% | 3% | 59% | (502) |
| July '05 | 47% | 3% | 50% | (497) |
| Apr. '05 | 47% | 4% | 49% | (486) |
| Feb. '05 | 47% | 4% | 49% | (533) |
| Oct. '04 | 48% | 3% | 49% | (568) |
| July '04 | 41% | 3% | 56% | (499) |
| Apr. '04 | 48% | 5% | 48% | (539) |
| Feb. '04 | 44% | 4% | 52% | (507) |
| Oct. '03 | 53% | 3% | 44% | (501) |
| June '03 | 63% | 3% | 34% | (512) |
| Apr. '03 | 72% | 3% | 25% | (506) |
| Feb. '03 | 60% | 4% | 36% | (646) |
| June '02 | 69% | 5% | 26% | (644) |
| Apr. '02 | 76% | 5% | 19% | (690) |
| Feb. '02 | 86% | 4% | 10% | (722) |
| Oct. '01 | 88% | 4% | 7% | (685) |

Presidential Approval - Handling of Situation in Iraq

"Do you approve or disapprove of the way George W. Bush is handling the situation with Iraq?"

| | <u>Approve</u> | <u>Neutral</u> | <u>Disapprove</u> | <u>(N)</u> |
|------------------|----------------|----------------|-------------------|--------------|
| Apr. '08 | 31% | 4% | 65% | (497) |
| Feb. '08 | 26% | 3% | 70% | (551) |
| Sep. '07 | 29% | 3% | 68% | (508) |
| July '07 | 21% | 4% | 74% | (521) |
| Apr. '07 | 26% | 3% | 71% | (512) |
| Feb. '07 | 25% | 2% | 72% | (527) |
| Sept. '06 | 34% | 3% | 62% | (511) |
| July '06 | 36% | 6% | 57% | (499) |
| Apr. '06 | 29% | 4% | 67% | (501) |
| Feb. '06 | 39% | 3% | 59% | (498) |
| Oct. '05 | 38% | 2% | 60% | (506) |
| July '05 | 45% | 3% | 51% | (499) |
| Apr. '05 | 45% | 3% | 52% | (491) |
| Feb. '05 | 47% | 3% | 50% | (535) |
| July '04 | 42% | 3% | 55% | (501) |
| Apr. '04 | 49% | 4% | 47% | (540) |
| Feb. '04 | 44% | 3% | 53% | (509) |
| Oct. '03 | 54% | 3% | 42% | (500) |
| June '03 | 64% | 4% | 32% | (513) |
| Apr. '03 | 79% | 2% | 18% | (503) |
| Feb. '03 | 56% | 7% | 37% | (646) |

Support for War in Iraq

“Do you support or oppose the United States having gone to war with Iraq?”

| | <u>Support</u> | <u>Neutral</u> | <u>Oppose</u> | <u>(N)</u> |
|------------------|----------------|----------------|---------------|--------------|
| Apr. '08 | 40% | 3% | 57% | (498) |
| Feb. '08 | 38% | 5% | 57% | (548) |
| Sep. '07 | 40% | 6% | 54% | (506) |
| July '07 | 35% | 6% | 59% | (516) |
| Apr. '07 | 37% | 5% | 58% | (510) |
| Feb. '07 | 40% | 5% | 55% | (525) |
| Sept. '06 | 42% | 4% | 54% | (510) |
| July '06 | 47% | 6% | 47% | (500) |
| Apr. '06 | 46% | 5% | 49% | (496) |
| Feb. '06 | 47% | 5% | 48% | (500) |
| Oct. '05 | 45% | 4% | 50% | (502) |
| July '05 | 48% | 5% | 48% | (493) |
| Apr. '05 | 52% | 3% | 45% | (489) |
| Feb. '05 | 47% | 6% | 47% | (537) |
| July '04 | 47% | 6% | 47% | (498) |
| Apr. '04 | 59% | 4% | 37% | (536) |
| Feb. '04 | 54% | 3% | 33% | (509) |
| Oct. '03 | 65% | 5% | 30% | (496) |
| June '03 | 69% | 4% | 20% | (513) |
| Apr. '03 | 77% | 4% | 20% | (506) |

Can US Win in Iraq?

“Do you think the United States can win or cannot win the war in Iraq?”

| | <u>Can Win</u> | <u>Cannot Win</u> | <u>Don't Know</u> | <u>(N)</u> |
|-----------------|----------------|-------------------|-------------------|--------------|
| Apr. '08 | 34% | 56% | 10% | (495) |
| Feb. '08 | 35% | 53% | 12% | (544) |
| Sep. '07 | 32% | 55% | 13% | (503) |
| July '07 | 32% | 57% | 11% | (504) |
| Apr. '07 | 35% | 55% | 10% | (512) |

Right Track - Wrong Track

“Do you think things in this country are generally going in the right direction or are they seriously off on the wrong track?”

| | <u>Right Direction</u> | <u>Wrong Track</u> | <u>Don't Know</u> | <u>(N=)</u> |
|-----------|----------------------------|------------------------|-----------------------|-------------|
| Apr. '08 | 21% | 74% | 5% | (487) |
| Feb. '08 | 23% | 71% | 7% | (553) |
| Sep. '07 | 30% | 62% | 8% | (505) |
| July '07 | 34% | 59% | 6% | (523) |
| Apr. '07 | 37% | 55% | 8% | (510) |
| Feb. '07 | 40% | 53% | 7% | (516) |
| Sept. '06 | 34% | 56% | 10% | (510) |
| July '06 | 38% | 51% | 11% | (496) |
| Apr. '06 | 30% | 62% | 8% | (501) |
| Feb. '06 | 40% | 53% | 7% | (487) |
| Oct. '05 | 38% | 55% | 7% | (498) |
| July '05 | 47% | 47% | 6% | (492) |
| Apr. '05 | 46% | 43% | 11% | (487) |
| Feb. '05 | 53% | 40% | 7% | (535) |
| Oct. '04 | 46% | 50% | 4% | (574) |
| July '04 | 48% | 43% | 10% | (500) |
| Apr. '04 | 44% | 48% | 8% | (535) |
| Feb. '04 | 43% | 49% | 8% | (503) |
| Oct. '03 | 51% | 43% | 6% | (487) |
| June '03 | 56% | 38% | 5% | (511) |

Favorability Rating - President George W. Bush

"Next, I'd like to get your overall opinion of some people in the news. As I read each name, please say if you have a favorable or unfavorable opinion of this person - or if you have never heard of him or her. President George W. Bush."

| | <u>Favorable</u> | <u>Neutral</u> | <u>Unfavorable</u> | <u>NET</u> | <u>(N=)</u> |
|-----------|------------------|----------------|--------------------|------------|-------------|
| Apr. '08 | 27% | 7% | 65% | -38% | (500) |
| Feb. '08 | 26% | 4% | 67% | -41% | (554) |
| Sep. '07 | 29% | 5% | 66% | -37% | (507) |
| July '07 | 27% | 4% | 69% | -42% | (523) |
| Apr. '07 | 30% | 7% | 63% | -33% | (515) |
| Feb. '07 | 32% | 5% | 63% | -31% | (535) |
| Sept. '06 | 37% | 5% | 58% | -21% | (513) |
| July '06 | 41% | 7% | 51% | -10% | (500) |
| Apr. '06 | 35% | 6% | 59% | -24% | (505) |
| Feb. '06 | 41% | 6% | 53% | -12% | (499) |
| Oct. '05 | 42% | 6% | 52% | -10% | (510) |
| July '05 | 52% | 2% | 46% | +6% | (497) |
| Oct. '04 | 55% | 2% | 43% | +12% | (574) |
| July '04 | 50% | 6% | 44% | +6% | (506) |
| Apr. '04 | 48% | 6% | 46% | +2% | (540) |
| Feb. '04 | 48% | 4% | 48% | 0 | (510) |
| Oct. '03 | 57% | 4% | 38% | +19% | (503) |
| June '03 | 62% | 6% | 32% | +30% | (514) |
| Apr. '03 | 72% | 5% | 23% | +49% | (503) |
| Feb. '03 | 64% | 7% | 29% | +35% | (651) |
| June '02 | 69% | 8% | 23% | +46% | (641) |
| Apr. '02 | 78% | 6% | 16% | +62% | (693) |
| Feb. '02 | 84% | 5% | 11% | +73% | (726) |
| Oct. '01 | 88% | 4% | 8% | +80% | (678) |

Presidential Approval Rating - Overall

| STATEWIDE | <u>Approve</u> 28% | <u>Neutral</u> 3% | <u>Disapprove</u> 69% | <u>(N=)</u> 500 |
|--------------------------------|-------------------------------------|------------------------------------|--|----------------------------------|
| Registered Democrat | 5% | 4% | 91% | 134 |
| Undeclared | 24% | 3% | 74% | 211 |
| Registered Republican | 62% | 3% | 35% | 120 |
| Not registered | 16% | 8% | 76% | 30 |
| Democrat | 3% | 2% | 95% | 223 |
| Independent | 24% | 10% | 67% | 89 |
| Republican | 60% | 3% | 37% | 182 |
| Liberal | 8% | 1% | 91% | 77 |
| Moderate | 19% | 3% | 78% | 240 |
| Conservative | 51% | 5% | 44% | 158 |
| Union household | 24% | 0% | 76% | 59 |
| Non-union | 28% | 4% | 68% | 439 |
| 5 years or less in NH | 18% | 6% | 76% | 23 |
| 6 to 10 years | 17% | 1% | 81% | 44 |
| 11 to 20 years | 21% | 6% | 73% | 69 |
| More than 20 years | 30% | 3% | 66% | 357 |
| 18 to 34 | 17% | 2% | 81% | 33 |
| 35 to 49 | 33% | 6% | 61% | 142 |
| 50 to 64 | 23% | 0% | 76% | 200 |
| 65 and over | 33% | 7% | 60% | 106 |
| Male | 27% | 4% | 69% | 242 |
| Female | 28% | 3% | 69% | 258 |
| High school or less | 27% | 5% | 69% | 128 |
| Some college | 33% | 3% | 64% | 115 |
| College graduate | 32% | 4% | 64% | 171 |
| Post-graduate | 13% | 2% | 85% | 82 |
| Less than \$30K | 29% | 5% | 66% | 59 |
| \$30K to \$60K | 21% | 2% | 77% | 88 |
| \$60K to \$75K | 18% | 6% | 76% | 43 |
| \$75K to \$100K | 33% | 3% | 64% | 70 |
| More than \$100K | 25% | 2% | 73% | 100 |
| Married | 30% | 3% | 67% | 334 |
| Divorced/separated | 25% | 6% | 69% | 104 |
| Never married | 12% | 3% | 85% | 55 |
| Protestant | 38% | 4% | 59% | 194 |
| Catholic | 25% | 2% | 73% | 174 |
| Other | 14% | 4% | 82% | 102 |
| Attend services 1 or more/week | 39% | 4% | 57% | 130 |
| 1-2 times a month | 22% | 2% | 76% | 75 |
| Less often | 22% | 4% | 74% | 156 |
| Never | 26% | 4% | 70% | 121 |
| North Country | 23% | 3% | 74% | 45 |
| Central/Lakes | 30% | 4% | 66% | 88 |
| Connecticut Valley | 17% | 3% | 80% | 79 |
| Mass Border | 22% | 6% | 73% | 130 |
| Seacoast | 37% | 1% | 62% | 80 |
| Manchester Area | 38% | 3% | 59% | 79 |
| 1st Cong. District | 33% | 2% | 66% | 251 |
| 2nd Cong. District | 23% | 5% | 72% | 249 |

Presidential Approval Rating - Economy

| | <u>Approve</u> 23% | <u>Neutral</u> 5% | <u>Disapprove</u> 71% | <u>(N=)</u> 499 |
|--------------------------------|-----------------------|----------------------|--------------------------|--------------------|
| STATEWIDE | | | | |
| Registered Democrat | 3% | 5% | 92% | 134 |
| Undeclared | 20% | 5% | 75% | 210 |
| Registered Republican | 57% | 7% | 37% | 120 |
| Not registered | 5% | 6% | 88% | 30 |
| Democrat | 3% | 2% | 95% | 222 |
| Independent | 15% | 9% | 76% | 89 |
| Republican | 53% | 7% | 39% | 182 |
| Liberal | 5% | 3% | 92% | 77 |
| Moderate | 16% | 4% | 79% | 239 |
| Conservative | 45% | 9% | 46% | 158 |
| Union household | 12% | 0% | 88% | 59 |
| Non-union | 25% | 6% | 69% | 438 |
| 5 years or less in NH | 15% | 7% | 78% | 23 |
| 6 to 10 years | 17% | 1% | 82% | 44 |
| 11 to 20 years | 19% | 7% | 74% | 68 |
| More than 20 years | 25% | 5% | 69% | 357 |
| 18 to 34 | 11% | 2% | 87% | 32 |
| 35 to 49 | 29% | 8% | 62% | 142 |
| 50 to 64 | 20% | 1% | 79% | 200 |
| 65 and over | 27% | 11% | 62% | 106 |
| Male | 24% | 4% | 72% | 241 |
| Female | 23% | 6% | 71% | 258 |
| High school or less | 21% | 5% | 74% | 127 |
| Some college | 29% | 6% | 65% | 115 |
| College graduate | 29% | 6% | 65% | 171 |
| Post-graduate | 8% | 4% | 88% | 82 |
| Less than \$30K | 20% | 11% | 68% | 59 |
| \$30K to \$60K | 24% | 2% | 74% | 88 |
| \$60K to \$75K | 23% | 3% | 74% | 43 |
| \$75K to \$100K | 28% | 4% | 69% | 70 |
| More than \$100K | 21% | 3% | 76% | 99 |
| Married | 26% | 6% | 69% | 334 |
| Divorced/separated | 23% | 6% | 71% | 104 |
| Never married | 8% | 1% | 91% | 54 |
| Protestant | 32% | 7% | 60% | 193 |
| Catholic | 21% | 4% | 74% | 174 |
| Other | 14% | 2% | 85% | 102 |
| Attend services 1 or more/week | 33% | 9% | 58% | 130 |
| 1-2 times a month | 19% | 4% | 77% | 75 |
| Less often | 21% | 4% | 74% | 156 |
| Never | 20% | 4% | 76% | 121 |
| North Country | 31% | 4% | 65% | 45 |
| Central/Lakes | 24% | 10% | 66% | 88 |
| Connecticut Valley | 7% | 5% | 88% | 79 |
| Mass Border | 16% | 7% | 76% | 129 |
| Seacoast | 33% | 2% | 65% | 80 |
| Manchester Area | 36% | 2% | 62% | 79 |
| 1st Cong. District | 30% | 3% | 67% | 250 |
| 2nd Cong. District | 17% | 8% | 75% | 249 |

Presidential Approval Rating - Foreign Affairs

| STATEWIDE | <u>Approve</u> 28% | <u>Neutral</u> 5% | <u>Disapprove</u> 67% | <u>(N=)</u> 498 |
|--------------------------------|-------------------------------------|------------------------------------|--|----------------------------------|
| Registered Democrat | 6% | 5% | 89% | 134 |
| Undeclared | 23% | 2% | 74% | 211 |
| Registered Republican | 61% | 6% | 33% | 119 |
| Not registered | 23% | 18% | 59% | 30 |
| Democrat | 3% | 4% | 93% | 222 |
| Independent | 25% | 6% | 68% | 89 |
| Republican | 60% | 6% | 35% | 181 |
| Liberal | 8% | 3% | 89% | 77 |
| Moderate | 20% | 5% | 75% | 239 |
| Conservative | 51% | 6% | 44% | 157 |
| Union household | 18% | 2% | 81% | 59 |
| Non-union | 29% | 5% | 65% | 437 |
| 5 years or less in NH | 25% | 11% | 63% | 23 |
| 6 to 10 years | 23% | 1% | 76% | 44 |
| 11 to 20 years | 15% | 4% | 81% | 69 |
| More than 20 years | 31% | 6% | 64% | 355 |
| 18 to 34 | 14% | 7% | 79% | 33 |
| 35 to 49 | 36% | 3% | 61% | 142 |
| 50 to 64 | 24% | 4% | 72% | 200 |
| 65 and over | 29% | 11% | 60% | 105 |
| Male | 29% | 5% | 66% | 242 |
| Female | 27% | 5% | 69% | 256 |
| High school or less | 23% | 9% | 68% | 128 |
| Some college | 34% | 4% | 62% | 115 |
| College graduate | 34% | 4% | 61% | 169 |
| Post-graduate | 15% | 2% | 83% | 82 |
| Less than \$30K | 24% | 16% | 59% | 58 |
| \$30K to \$60K | 23% | 4% | 73% | 88 |
| \$60K to \$75K | 28% | 6% | 65% | 43 |
| \$75K to \$100K | 29% | 0% | 71% | 70 |
| More than \$100K | 28% | 3% | 69% | 100 |
| Married | 29% | 4% | 67% | 334 |
| Divorced/separated | 25% | 7% | 68% | 103 |
| Never married | 22% | 9% | 69% | 55 |
| Protestant | 36% | 7% | 57% | 193 |
| Catholic | 26% | 4% | 71% | 174 |
| Other | 18% | 5% | 77% | 101 |
| Attend services 1 or more/week | 36% | 8% | 56% | 129 |
| 1-2 times a month | 23% | 0% | 77% | 75 |
| Less often | 22% | 5% | 72% | 156 |
| Never | 32% | 4% | 64% | 120 |
| North Country | 27% | 6% | 67% | 44 |
| Central/Lakes | 35% | 4% | 61% | 88 |
| Connecticut Valley | 15% | 7% | 79% | 79 |
| Mass Border | 22% | 7% | 71% | 130 |
| Seacoast | 37% | 2% | 61% | 79 |
| Manchester Area | 33% | 3% | 64% | 79 |
| 1st Cong. District | 34% | 3% | 63% | 249 |
| 2nd Cong. District | 22% | 7% | 71% | 249 |

U.S. Right Direction / Wrong Track

| | <u>Right Direction</u> 21% | <u>Wrong Track</u> 74% | <u>Don't Know</u> 5% | <u>(N=)</u> 487 |
|--------------------------------|--|--------------------------------------|------------------------------------|---------------------------|
| STATEWIDE | | | | |
| Registered Democrat | 8% | 89% | 3% | 132 |
| Undeclared | 17% | 79% | 4% | 206 |
| Registered Republican | 41% | 52% | 8% | 114 |
| Not registered | 30% | 60% | 10% | 30 |
| Democrat | 5% | 93% | 2% | 219 |
| Independent | 23% | 68% | 10% | 89 |
| Republican | 41% | 53% | 6% | 173 |
| Liberal | 6% | 92% | 2% | 77 |
| Moderate | 15% | 79% | 6% | 236 |
| Conservative | 39% | 56% | 4% | 149 |
| Union household | 17% | 78% | 5% | 59 |
| Non-union | 21% | 74% | 5% | 427 |
| 5 years or less in NH | 29% | 62% | 9% | 22 |
| 6 to 10 years | 20% | 77% | 3% | 44 |
| 11 to 20 years | 27% | 71% | 2% | 68 |
| More than 20 years | 19% | 76% | 5% | 345 |
| 18 to 34 | 18% | 80% | 3% | 33 |
| 35 to 49 | 28% | 68% | 4% | 138 |
| 50 to 64 | 15% | 80% | 4% | 195 |
| 65 and over | 24% | 68% | 8% | 102 |
| Male | 26% | 71% | 4% | 234 |
| Female | 16% | 78% | 6% | 253 |
| High school or less | 19% | 78% | 3% | 123 |
| Some college | 26% | 71% | 3% | 112 |
| College graduate | 25% | 69% | 6% | 167 |
| Post-graduate | 9% | 83% | 8% | 82 |
| Less than \$30K | 18% | 78% | 5% | 59 |
| \$30K to \$60K | 22% | 76% | 3% | 83 |
| \$60K to \$75K | 18% | 80% | 2% | 42 |
| \$75K to \$100K | 27% | 71% | 2% | 70 |
| More than \$100K | 22% | 73% | 6% | 99 |
| Married | 22% | 73% | 5% | 324 |
| Divorced/separated | 17% | 78% | 6% | 101 |
| Never married | 21% | 78% | 1% | 55 |
| Protestant | 25% | 68% | 6% | 190 |
| Catholic | 21% | 77% | 2% | 167 |
| Other | 15% | 80% | 5% | 100 |
| Attend services 1 or more/week | 25% | 68% | 7% | 125 |
| 1-2 times a month | 15% | 82% | 4% | 74 |
| Less often | 21% | 78% | 1% | 151 |
| Never | 21% | 72% | 7% | 120 |
| North Country | 16% | 78% | 6% | 44 |
| Central/Lakes | 29% | 66% | 5% | 84 |
| Connecticut Valley | 8% | 88% | 4% | 79 |
| Mass Border | 17% | 79% | 4% | 128 |
| Seacoast | 30% | 67% | 3% | 77 |
| Manchester Area | 27% | 66% | 7% | 76 |
| 1st Cong. District | 24% | 71% | 5% | 241 |
| 2nd Cong. District | 18% | 77% | 5% | 247 |

Presidential Approval Rating - Iraq

| STATEWIDE | <u>Approve</u> 31% | <u>Neutral</u> 4% | <u>Disapprove</u> 65% | <u>(N=)</u> 497 |
|--------------------------------|-------------------------------------|------------------------------------|--|----------------------------------|
| Registered Democrat | 6% | 2% | 91% | 134 |
| Undeclared | 27% | 4% | 69% | 209 |
| Registered Republican | 65% | 4% | 31% | 119 |
| Not registered | 23% | 18% | 59% | 30 |
| Democrat | 4% | 2% | 93% | 223 |
| Independent | 30% | 8% | 61% | 87 |
| Republican | 64% | 5% | 31% | 181 |
| Liberal | 9% | 3% | 88% | 77 |
| Moderate | 24% | 3% | 73% | 238 |
| Conservative | 53% | 7% | 41% | 156 |
| Union household | 19% | 6% | 75% | 59 |
| Non-union | 32% | 4% | 63% | 436 |
| 5 years or less in NH | 18% | 14% | 67% | 23 |
| 6 to 10 years | 20% | 7% | 73% | 44 |
| 11 to 20 years | 22% | 1% | 77% | 69 |
| More than 20 years | 34% | 4% | 62% | 353 |
| 18 to 34 | 27% | 2% | 71% | 33 |
| 35 to 49 | 36% | 2% | 61% | 141 |
| 50 to 64 | 28% | 4% | 68% | 198 |
| 65 and over | 29% | 9% | 61% | 105 |
| Male | 34% | 5% | 62% | 240 |
| Female | 27% | 4% | 68% | 257 |
| High school or less | 27% | 8% | 66% | 128 |
| Some college | 38% | 3% | 59% | 115 |
| College graduate | 37% | 3% | 61% | 168 |
| Post-graduate | 13% | 6% | 81% | 82 |
| Less than \$30K | 26% | 13% | 61% | 58 |
| \$30K to \$60K | 23% | 4% | 73% | 87 |
| \$60K to \$75K | 32% | 0% | 68% | 43 |
| \$75K to \$100K | 32% | 0% | 68% | 70 |
| More than \$100K | 30% | 3% | 67% | 100 |
| Married | 33% | 4% | 64% | 332 |
| Divorced/separated | 27% | 5% | 68% | 103 |
| Never married | 25% | 5% | 71% | 55 |
| Protestant | 43% | 5% | 52% | 191 |
| Catholic | 23% | 3% | 74% | 174 |
| Other | 19% | 8% | 73% | 102 |
| Attend services 1 or more/week | 36% | 7% | 57% | 129 |
| 1-2 times a month | 19% | 1% | 80% | 75 |
| Less often | 30% | 3% | 68% | 155 |
| Never | 32% | 7% | 60% | 120 |
| North Country | 25% | 4% | 71% | 44 |
| Central/Lakes | 34% | 10% | 56% | 88 |
| Connecticut Valley | 17% | 7% | 77% | 77 |
| Mass Border | 30% | 3% | 67% | 130 |
| Seacoast | 38% | 2% | 60% | 80 |
| Manchester Area | 37% | 0% | 63% | 79 |
| 1st Cong. District | 36% | 3% | 61% | 250 |
| 2nd Cong. District | 25% | 6% | 69% | 247 |

Support / Oppose US War in Iraq

| STATEWIDE | <u>Support</u> 40% | <u>Neutral</u> 3% | <u>Oppose</u> 57% | <u>(N=)</u> 498 |
|--------------------------------|-------------------------------------|------------------------------------|------------------------------------|----------------------------------|
| Registered Democrat | 16% | 2% | 82% | 132 |
| Undeclared | 37% | 3% | 60% | 211 |
| Registered Republican | 70% | 4% | 26% | 120 |
| Not registered | 38% | 4% | 58% | 30 |
| Democrat | 12% | 2% | 86% | 221 |
| Independent | 50% | 1% | 49% | 89 |
| Republican | 69% | 4% | 27% | 182 |
| Liberal | 14% | 2% | 84% | 77 |
| Moderate | 34% | 3% | 63% | 239 |
| Conservative | 62% | 3% | 34% | 156 |
| Union household | 27% | 2% | 71% | 57 |
| Non-union | 41% | 3% | 56% | 439 |
| 5 years or less in NH | 33% | 0% | 67% | 23 |
| 6 to 10 years | 22% | 3% | 75% | 44 |
| 11 to 20 years | 43% | 3% | 54% | 69 |
| More than 20 years | 41% | 3% | 56% | 354 |
| 18 to 34 | 32% | 9% | 58% | 33 |
| 35 to 49 | 51% | 1% | 48% | 142 |
| 50 to 64 | 34% | 3% | 62% | 200 |
| 65 and over | 38% | 3% | 60% | 104 |
| Male | 43% | 3% | 54% | 242 |
| Female | 36% | 3% | 61% | 256 |
| High school or less | 43% | 2% | 54% | 126 |
| Some college | 42% | 3% | 55% | 115 |
| College graduate | 44% | 4% | 52% | 170 |
| Post-graduate | 23% | 0% | 77% | 82 |
| Less than \$30K | 39% | 2% | 59% | 59 |
| \$30K to \$60K | 29% | 3% | 68% | 88 |
| \$60K to \$75K | 39% | 3% | 59% | 43 |
| \$75K to \$100K | 43% | 4% | 53% | 70 |
| More than \$100K | 40% | 4% | 56% | 100 |
| Married | 43% | 3% | 55% | 332 |
| Divorced/separated | 35% | 3% | 63% | 104 |
| Never married | 29% | 4% | 66% | 55 |
| Protestant | 44% | 3% | 53% | 194 |
| Catholic | 38% | 3% | 59% | 172 |
| Other | 30% | 3% | 67% | 101 |
| Attend services 1 or more/week | 47% | 3% | 50% | 128 |
| 1-2 times a month | 28% | 5% | 66% | 75 |
| Less often | 37% | 0% | 63% | 156 |
| Never | 40% | 5% | 55% | 120 |
| North Country | 35% | 6% | 59% | 45 |
| Central/Lakes | 52% | 0% | 48% | 88 |
| Connecticut Valley | 31% | 2% | 67% | 79 |
| Mass Border | 36% | 4% | 60% | 128 |
| Seacoast | 43% | 4% | 54% | 79 |
| Manchester Area | 42% | 2% | 56% | 79 |
| 1st Cong. District | 41% | 2% | 56% | 251 |
| 2nd Cong. District | 38% | 3% | 59% | 247 |

Can US Win War in Iraq?

| STATEWIDE | Can Win 34% | Cannot Win 56% | Don't Know 10% | (N=) 495 |
|--------------------------------|----------------------------|-------------------------------|-------------------------------|---------------------|
| Registered Democrat | 18% | 73% | 9% | 134 |
| Undeclared | 33% | 58% | 9% | 208 |
| Registered Republican | 53% | 37% | 10% | 118 |
| Not registered | 42% | 48% | 10% | 30 |
| Democrat | 15% | 75% | 10% | 223 |
| Independent | 39% | 52% | 9% | 88 |
| Republican | 56% | 35% | 9% | 178 |
| Liberal | 12% | 85% | 3% | 77 |
| Moderate | 28% | 64% | 7% | 239 |
| Conservative | 54% | 32% | 13% | 154 |
| Union household | 24% | 72% | 3% | 59 |
| Non-union | 35% | 54% | 10% | 434 |
| 5 years or less in NH | 36% | 54% | 11% | 23 |
| 6 to 10 years | 14% | 78% | 8% | 44 |
| 11 to 20 years | 25% | 67% | 8% | 69 |
| More than 20 years | 38% | 52% | 10% | 353 |
| 18 to 34 | 28% | 56% | 16% | 33 |
| 35 to 49 | 39% | 51% | 10% | 141 |
| 50 to 64 | 31% | 63% | 6% | 198 |
| 65 and over | 38% | 49% | 13% | 105 |
| Male | 37% | 56% | 7% | 237 |
| Female | 32% | 56% | 12% | 258 |
| High school or less | 38% | 53% | 9% | 128 |
| Some college | 38% | 50% | 11% | 113 |
| College graduate | 37% | 52% | 11% | 169 |
| Post-graduate | 15% | 79% | 6% | 82 |
| Less than \$30K | 37% | 45% | 17% | 59 |
| \$30K to \$60K | 29% | 60% | 11% | 87 |
| \$60K to \$75K | 36% | 58% | 6% | 43 |
| \$75K to \$100K | 34% | 52% | 13% | 69 |
| More than \$100K | 31% | 65% | 3% | 99 |
| Married | 35% | 56% | 9% | 331 |
| Divorced/separated | 31% | 58% | 11% | 103 |
| Never married | 32% | 56% | 12% | 55 |
| Protestant | 42% | 47% | 11% | 192 |
| Catholic | 37% | 60% | 4% | 174 |
| Other | 20% | 64% | 16% | 101 |
| Attend services 1 or more/week | 45% | 45% | 10% | 130 |
| 1-2 times a month | 32% | 60% | 8% | 73 |
| Less often | 29% | 64% | 7% | 156 |
| Never | 31% | 55% | 14% | 119 |
| North Country | 27% | 56% | 17% | 45 |
| Central/Lakes | 43% | 52% | 5% | 87 |
| Connecticut Valley | 24% | 62% | 13% | 78 |
| Mass Border | 34% | 57% | 9% | 130 |
| Seacoast | 33% | 59% | 9% | 78 |
| Manchester Area | 42% | 49% | 9% | 77 |
| 1st Cong. District | 36% | 55% | 9% | 247 |
| 2nd Cong. District | 33% | 57% | 10% | 248 |

Favorability Rating - George W. Bush

| STATEWIDE | <u>Favorable</u> 27% | <u>Neutral</u> 7% | <u>Unfavorable</u> 65% | <u>DK</u> 0% | <u>(N)</u> 500 |
|--------------------------------|---------------------------------------|------------------------------------|---|-------------------------------|---------------------------------|
| Registered Democrat | 5% | 5% | 90% | 0% | 134 |
| Undeclared | 24% | 5% | 71% | 0% | 211 |
| Registered Republican | 62% | 10% | 28% | 0% | 120 |
| Not registered | 12% | 20% | 68% | 0% | 30 |
| Democrat | 4% | 2% | 94% | 0% | 223 |
| Independent | 22% | 16% | 62% | 0% | 89 |
| Republican | 59% | 9% | 31% | 0% | 182 |
| Liberal | 9% | 0% | 91% | 0% | 77 |
| Moderate | 20% | 6% | 74% | 0% | 240 |
| Conservative | 50% | 11% | 38% | 0% | 158 |
| Union household | 20% | 6% | 74% | 0% | 59 |
| Non-union | 29% | 7% | 64% | 0% | 439 |
| 5 years or less in NH | 27% | 9% | 64% | 0% | 23 |
| 6 to 10 years | 19% | 4% | 76% | 1% | 44 |
| 11 to 20 years | 24% | 5% | 71% | 0% | 69 |
| More than 20 years | 29% | 8% | 63% | 0% | 357 |
| 18 to 34 | 16% | 4% | 81% | 0% | 33 |
| 35 to 49 | 36% | 5% | 60% | 0% | 142 |
| 50 to 64 | 23% | 6% | 71% | 0% | 200 |
| 65 and over | 30% | 13% | 57% | 0% | 106 |
| Male | 27% | 9% | 64% | 0% | 242 |
| Female | 28% | 6% | 66% | 0% | 258 |
| High school or less | 28% | 8% | 64% | 0% | 128 |
| Some college | 32% | 10% | 58% | 0% | 115 |
| College graduate | 31% | 7% | 62% | 0% | 171 |
| Post-graduate | 12% | 4% | 84% | 0% | 82 |
| Less than \$30K | 29% | 8% | 63% | 1% | 59 |
| \$30K to \$60K | 22% | 5% | 73% | 0% | 88 |
| \$60K to \$75K | 16% | 12% | 72% | 0% | 43 |
| \$75K to \$100K | 31% | 5% | 64% | 0% | 70 |
| More than \$100K | 28% | 4% | 68% | 0% | 100 |
| Married | 30% | 8% | 63% | 0% | 334 |
| Divorced/separated | 26% | 8% | 66% | 0% | 104 |
| Never married | 16% | 2% | 82% | 0% | 55 |
| Protestant | 37% | 8% | 55% | 0% | 194 |
| Catholic | 25% | 7% | 68% | 0% | 174 |
| Other | 13% | 7% | 80% | 0% | 102 |
| Attend services 1 or more/week | 42% | 7% | 51% | 0% | 130 |
| 1-2 times a month | 20% | 5% | 75% | 0% | 75 |
| Less often | 23% | 6% | 71% | 0% | 156 |
| Never | 22% | 10% | 69% | 0% | 121 |
| North Country | 28% | 8% | 64% | 0% | 45 |
| Central/Lakes | 29% | 8% | 63% | 0% | 88 |
| Connecticut Valley | 13% | 7% | 79% | 1% | 79 |
| Mass Border | 26% | 8% | 66% | 0% | 130 |
| Seacoast | 37% | 2% | 60% | 0% | 80 |
| Manchester Area | 32% | 9% | 60% | 0% | 79 |
| 1st Cong. District | 32% | 6% | 62% | 0% | 251 |
| 2nd Cong. District | 22% | 9% | 69% | 0% | 249 |