

THE WMUR GRANITE STATE POLL

THE UNIVERSITY OF NEW HAMPSHIRE

LYNCH JOB APPROVAL STAYS HIGH

February 15, 2007

By: Andrew E. Smith, Ph.D.
UNH Survey Center
www.unh.edu/survey-center
603/862-2226

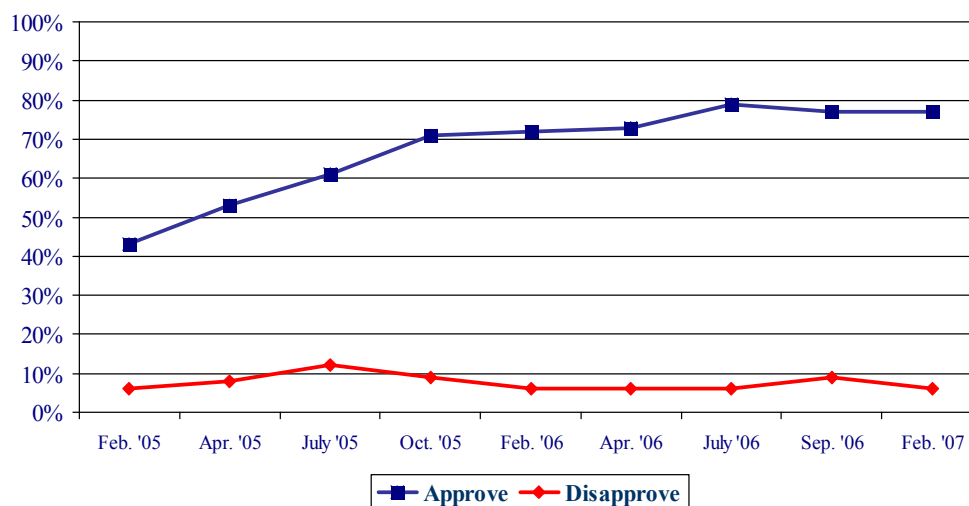
DURHAM, NH – New Hampshire Governor John Lynch continues to have widespread job approval. Education funding, high taxes, and jobs and the economy are seen as the most important problems facing the state.

These findings are based on the latest **Granite State Poll**,* conducted by the University of New Hampshire Survey Center. The Granite State Poll is sponsored by WMUR-TV, Manchester. Five hundred thirty-eight (538) randomly selected New Hampshire adults were interviewed by telephone between February 1 and February 5, 2007. The margin of sampling error for the survey is +/-4.2 percent.

Gubernatorial Approval

John Lynch's approval rating as New Hampshire Governor has stayed at stratospheric levels for the past two years. This led, in part, to his record reelection victory in November. In the most recent Granite State Poll, 77 percent of New Hampshire adults say they approve of the job Lynch has done as governor, only 6 percent disapprove, and 16 percent are neutral.

NH Gubernatorial Approval – John Lynch

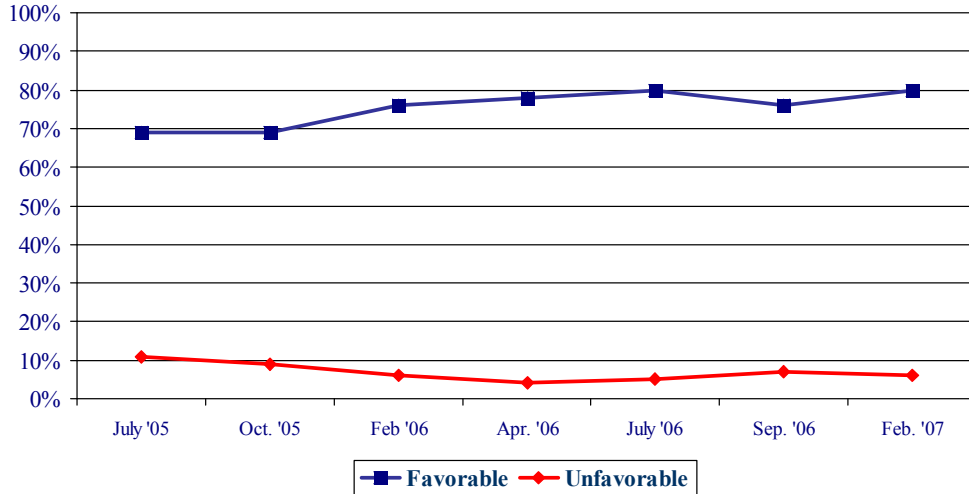


Lynch gets high ratings from all political groups – 82 percent of Democrats approve of the job Lynch is doing as governor, 73 percent of Republicans, approve, and 75 percent of Independents. “Lynch has maintained higher job approval ratings for a longer time than any governor in recent memory,” said Andrew Smith, Director of the UNH Survey Center.

* We ask that this copyrighted information be referred to as *the Granite State Poll*, sponsored by WMUR-TV.

Lynch's personal favorability rating is also very high. In the latest Granite State Poll, 80 percent of New Hampshire residents say they have a favorable opinion of Lynch, only 6 percent have an unfavorable opinion, 9 percent are neutral, and 5 percent say they don't know enough about him to say. Lynch's net favorability rating, the percentage having a favorable opinion minus the percentage having an unfavorable opinion, is +74 percent.

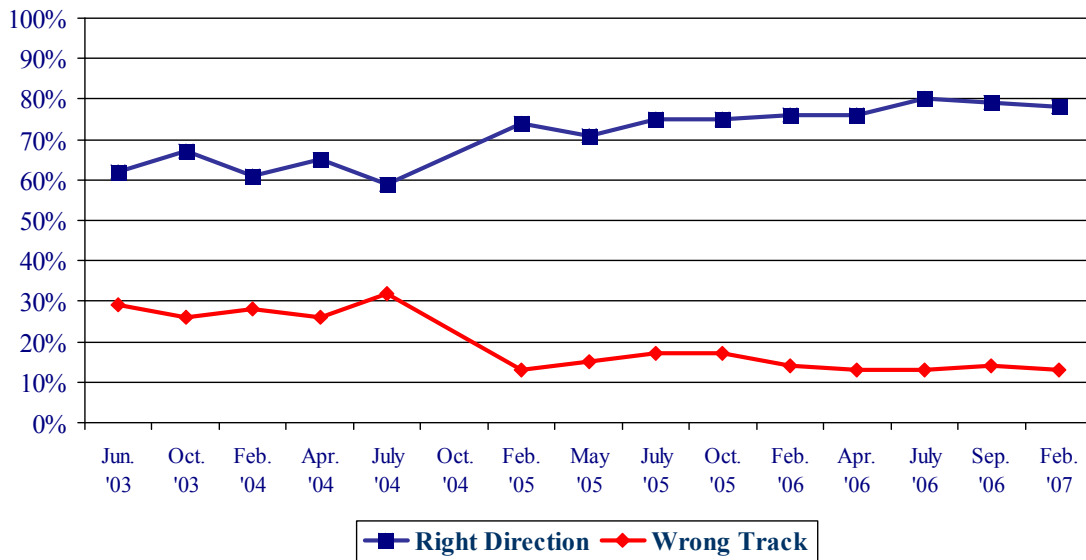
Favorability Ratings – NH Governor John Lynch



Right Direction or Wrong Track?

Granite Staters remain extremely optimistic about the future of New Hampshire. Seventy-eight percent think things in New Hampshire are generally going in the right direction, only 13 percent think things are seriously off on the wrong track, and 8 percent say they don't know. This indicator of optimism about the state has remained at high levels over the past two years.

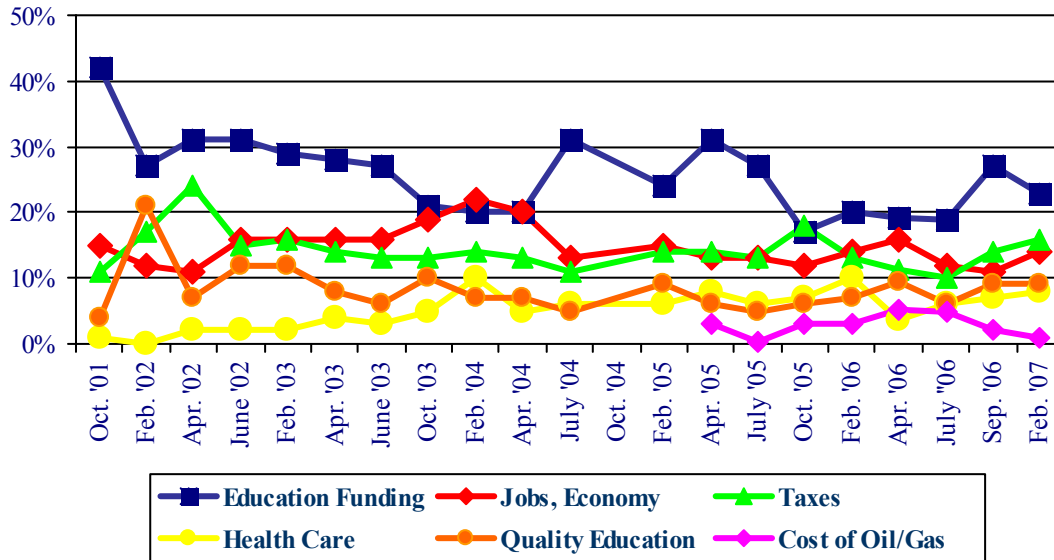
NH Heading in Right Direction or On Wrong Track?



Most Important Problem Facing New Hampshire

As the Legislature and the Governor try to cope with the recent NH Supreme Court decision throwing out the latest plan to deal with education funding, this problem will continue to dominate the legislative calendar in Concord. How to fund primary and secondary education is also seen as the important problem facing the state of New Hampshire, cited by 23 percent of New Hampshire adults, followed by high taxes and desires to change the tax system (16%), jobs and the economy (14%), the quality of education (9%), and health care issues (8%).

Most Important Problem Facing NH



Granite State Poll Methodology

These findings are based on the latest **Granite State Poll**,* conducted by the University of New Hampshire Survey Center. The Granite State Poll is sponsored by WMUR-TV, Manchester. Five hundred thirty-eight (538) randomly selected New Hampshire adults were interviewed by telephone between February 1 and February 5, 2007. In 95 of 100 cases, the statewide estimates will be accurate to plus or minus 4.2 percent. Results reported for other subgroups have potential for somewhat larger variation than those for the entire population.

The data have been weighted to adjust for numbers of adults and telephone lines within households, respondent sex, and region of the state. In addition to potential sampling error, all surveys have other potential sources of non-sampling error including question order effects, question wording effects, and non-response.

Gubernatorial Approval

“GENERALLY SPEAKING, do you approve or disapprove of the way Governor Lynch is handling his job as governor?”

	<u>Approve</u>	<u>Neutral/DK</u>	<u>Disapprove</u>	<u>(N=)</u>
Feb. '07	77%	16%	6%	(531)
Sept. '06	77	14	9	(504)
July '06	79	15	6	(498)
Apr. '06	73	21	6	(489)
Feb. '06	72	22	6	(491)
Oct. '05	71	20	9	(495)
July '05	61	26	12	(490)
Apr. '05	53	39	8	(480)
Feb. '05	43	51	6	(524)

* We ask that this copyrighted information be referred to as *the Granite State Poll*, sponsored by WMUR-TV.

Favorability Ratings – Governor (Businessman) John Lynch

"Next, I'd like to get your overall opinion of some people in the news. As I read each name, please say if you have a favorable or unfavorable opinion of this person - or if you have never heard of him or her. Governor (Hopkinton businessman) John Lynch."

	<u>Favorable</u>	<u>Neutral</u>	<u>Unfavorable</u>	<u>Don't Know</u>	<u>NET</u>	<u>(N=)</u>
Feb. '07	80%	9%	6%	5%	+74%	(536)
Sept. '06	76	11	7	5	+69%	(511)
July '06	80	8	5	7	+75%	(505)
Apr. '06	78	10	4	8	+74%	(503)
Feb. '06	76	12	6	6	+70%	(499)
Oct. '05	69	13	9	8	+60%	(508)
July '05	69	9	11	11	+58%	(500)
Oct. '04	34	13	12	40	+22%	(573)
July '04	17	8	6	69	+11%	(508)
Feb. '04	7	9	6	77	+1%	(509)

Most Important Problem Facing New Hampshire

"Let's turn to the State of New Hampshire ... There are many problems facing the STATE OF NEW HAMPSHIRE today. In general, what do you think is the most IMPORTANT problem facing the STATE OF NEW HAMPSHIRE today?"

	<u>Jobs, the Economy</u>	<u>Education Funding</u>	<u>Taxes</u>	<u>Health Care</u>	<u>Quality Educ.</u>	<u>Growth/Sprawl</u>	<u>State Budget</u>	<u>Cost of Gas/Oil</u>	<u>Other/DK</u>	<u>(N=)</u>
Feb. '07	14%	23%	16%	8%	9%	2%	1%	1%	26%	(527)
Sept. '06	11	27	14	7	9	3	2	2	26	(499)
July '06	12	19	10	6	6	3	1	5	38	(490)
Apr. '06	16	19	11	4	10	3	2	5	30	(501)
Feb. '06	14	20	13	10	7	3	1	3	29	(498)
Oct. '05	12	17	18	7	6	5	2	3	30	(503)
July '05	13	27	13	6	5	4	2	*	28	(496)
Apr. '05	13	31	14	8	6	3	5	3	18	(487)
Feb. '05	15	24	14	6	9	2	2	*	28	(541)
July '04	13	31	11	6	5	4	2	0	28	(504)
Apr. '04	20	20	13	5	7	3	4	0	29	(536)
Feb. '04	22	20	14	10	7	2	5	0	21	(502)
Oct. '03	19	21	13	5	10	3	6	0	23	(490)
June '03	16	27	13	3	6	1	9	0	25	(513)
Apr. '03	16	28	14	4	8	2	6	0	22	(497)
Feb. '03	16	29	16	2	12	2	2	0	21	(644)
June '02	16	31	15	2	12	1	5	0	18	(424)
Apr. '02	11	31	24	2	7	2	1	0	22	(684)
Feb. '02	12	27	17	0	21	1	3	0	19	(312)
Oct. '01	15	42	11	1	4	2	*	0	25	(519)

* Less than 1%

NH - Right Direction or Wrong Track

“Do you think things in New Hampshire are generally going in the right direction or are they seriously off on the wrong track?”

	<u>Right Direction</u>	<u>Wrong Track</u>	<u>Don't Know</u>	<u>(N=)</u>
Feb. '07	78%	13%	8%	(524)
Sept. '06	79%	14%	7%	(509)
July '06	80%	13%	8%	(497)
Apr. '06	76%	13%	11%	(501)
Feb. '06	76%	14%	10%	(495)
Oct. '05	75%	17%	9%	(502)
July '05	75%	17%	8%	(494)
May '05	71%	15%	13%	(488)
Feb. '05	74%	13%	13%	(535)
July '04	59%	32%	9%	(503)
Apr. '04	65%	26%	9%	(530)
Feb. '04	61%	28%	11%	(500)
Oct. '03	67%	26%	7%	(485)
Jun. '03	62%	29%	9%	(510)

Gubernatorial Approval

	<u>Approve</u> 77%	<u>Neutral</u> 16%	<u>Disapprove</u> 6%	<u>(N)</u> 531
STATEWIDE				
Registered Democrat	90%	8%	2%	116
Undeclared	74%	18%	8%	222
Registered Republican	75%	16%	9%	126
Not registered	68%	29%	4%	63
Democrat	82%	13%	5%	231
Independent	75%	19%	7%	104
Republican	73%	19%	8%	187
Liberal	79%	13%	8%	105
Moderate	87%	9%	3%	245
Conservative	64%	27%	9%	144
Union household	85%	9%	6%	78
Non-union	76%	17%	6%	448
5 years or less in NH	75%	23%	2%	55
6 to 10 years	79%	19%	3%	38
11 to 20 years	76%	20%	4%	104
More than 20 years	77%	14%	8%	328
18 to 34	61%	32%	7%	110
35 to 49	80%	15%	5%	159
50 to 64	83%	11%	6%	169
65 and over	83%	9%	8%	79
Male	76%	18%	7%	259
Female	79%	15%	6%	272
High school or less	74%	16%	10%	127
Some college	76%	21%	3%	139
College graduate	79%	13%	8%	169
Post-graduate	81%	15%	4%	96
Less than \$30K	87%	11%	2%	24
\$30K to \$60K	74%	21%	5%	85
\$60K to \$75K	69%	22%	9%	52
\$75K to \$100K	82%	14%	4%	55
More than \$100K	81%	14%	6%	119
Married	79%	15%	6%	360
Divorced/separated	78%	19%	4%	81
Never married	74%	19%	8%	86
Protestant	73%	19%	8%	161
Catholic	80%	15%	5%	204
Other	77%	17%	6%	154
Attend services 1 or more/week	72%	18%	10%	128
1-2 times a month	91%	5%	4%	63
Less often	77%	20%	3%	147
Never	76%	17%	7%	184
North Country	64%	26%	9%	45
Central/Lakes	87%	8%	5%	84
Connecticut Valley	68%	26%	6%	79
Mass Border	77%	16%	7%	165
Seacoast	81%	10%	9%	84
Manchester Area	82%	17%	1%	73
1st Cong. District	82%	13%	6%	245
2nd Cong. District	74%	20%	7%	286

Favorability Rating - John Lynch

	<u>Favorable</u> 80%	<u>Neutral</u> 9%	<u>Unfavorable</u> 6%	<u>Don't Know</u> 5%	<u>(N)</u> 536
STATEWIDE					
Registered Democrat	90%	5%	4%	1%	116
Undeclared	80%	10%	6%	4%	225
Registered Republican	74%	10%	10%	6%	127
Not registered	72%	13%	3%	12%	65
Democrat	83%	9%	5%	4%	232
Independent	83%	8%	5%	4%	105
Republican	75%	10%	8%	7%	191
Liberal	79%	10%	6%	5%	105
Moderate	91%	5%	2%	2%	248
Conservative	66%	13%	12%	10%	146
Union household	84%	7%	5%	5%	78
Non-union	79%	10%	6%	5%	454
5 years or less in NH	67%	12%	8%	13%	55
6 to 10 years	76%	14%	1%	10%	39
11 to 20 years	80%	9%	6%	5%	106
More than 20 years	82%	9%	7%	3%	330
18 to 34	71%	12%	6%	10%	112
35 to 49	80%	6%	10%	4%	160
50 to 64	85%	9%	2%	3%	170
65 and over	78%	13%	7%	2%	80
Male	80%	10%	6%	4%	260
Female	79%	8%	6%	6%	276
High school or less	77%	9%	7%	8%	129
Some college	82%	10%	4%	4%	139
College graduate	81%	7%	7%	5%	170
Post-graduate	79%	13%	5%	3%	97
Less than \$30K	87%	7%	2%	4%	24
\$30K to \$60K	81%	7%	6%	6%	85
\$60K to \$75K	78%	10%	6%	6%	52
\$75K to \$100K	83%	1%	13%	4%	56
More than \$100K	84%	10%	2%	4%	119
Married	80%	9%	7%	5%	363
Divorced/separated	81%	8%	4%	7%	82
Never married	80%	12%	4%	3%	88
Protestant	72%	12%	8%	9%	165
Catholic	86%	6%	5%	2%	205
Other	78%	12%	6%	4%	155
Attend services 1 or more/week	73%	12%	9%	6%	129
1-2 times a month	87%	5%	8%	0%	65
Less often	80%	9%	4%	7%	148
Never	81%	10%	5%	4%	185
North Country	71%	24%	3%	2%	48
Central/Lakes	88%	1%	8%	3%	84
Connecticut Valley	81%	4%	10%	5%	79
Mass Border	75%	10%	7%	7%	167
Seacoast	83%	8%	5%	4%	85
Manchester Area	81%	14%	2%	4%	73
1st Cong. District	80%	11%	5%	4%	249
2nd Cong. District	80%	8%	7%	5%	287

Are Things in NH on Right/Wrong Track?

	<u>Right</u> Direction 78%	<u>Wrong</u> Track 13%	<u>Don't</u> Know 8%	<u>(N)</u> 524
STATEWIDE				
Registered Democrat	84%	12%	4%	110
Undeclared	80%	13%	7%	223
Registered Republican	74%	18%	8%	125
Not registered	70%	8%	22%	62
Democrat	81%	12%	6%	225
Independent	79%	7%	14%	103
Republican	76%	16%	8%	188
Liberal	76%	17%	7%	99
Moderate	84%	10%	6%	246
Conservative	73%	17%	10%	142
Union household	81%	11%	8%	77
Non-union	78%	14%	8%	444
5 years or less in NH	75%	5%	20%	53
6 to 10 years	75%	13%	12%	39
11 to 20 years	75%	16%	9%	104
More than 20 years	80%	14%	6%	321
18 to 34	83%	7%	10%	107
35 to 49	76%	17%	7%	157
50 to 64	82%	10%	8%	167
65 and over	72%	21%	7%	80
Male	79%	14%	7%	257
Female	77%	13%	10%	267
High school or less	72%	17%	11%	128
Some college	79%	11%	9%	139
College graduate	80%	15%	5%	164
Post-graduate	82%	9%	10%	93
Less than \$30K	85%	9%	6%	24
\$30K to \$60K	80%	14%	6%	83
\$60K to \$75K	68%	24%	9%	51
\$75K to \$100K	88%	12%	0%	54
More than \$100K	84%	9%	8%	113
Married	78%	15%	7%	357
Divorced/separated	77%	13%	10%	80
Never married	81%	8%	11%	86
Protestant	73%	17%	10%	162
Catholic	82%	11%	7%	204
Other	80%	12%	9%	146
Attend services 1 or more/week	70%	19%	11%	128
1-2 times a month	80%	15%	5%	64
Less often	80%	9%	11%	148
Never	82%	13%	5%	176
North Country	82%	13%	5%	47
Central/Lakes	84%	10%	6%	82
Connecticut Valley	70%	21%	9%	78
Mass Border	74%	17%	9%	164
Seacoast	83%	8%	9%	83
Manchester Area	83%	8%	10%	70
1st Cong. District	80%	11%	9%	245
2nd Cong. District	77%	16%	8%	279

Most Important Problem Facing NH

	<u>Educ Funding</u> 23%	<u>Taxes</u> 16%	<u>Jobs/ Economy</u> 14%	<u>Educ. Quality</u> 9%	<u>Health Care</u> 8%	<u>Other</u> 23%	<u>Don't Know</u> 7%	<u>(N=)</u> 527
STATEWIDE								
Registered Democrat	19%	15%	24%	8%	11%	20%	3%	115
Undeclared	28%	13%	13%	11%	8%	23%	4%	220
Registered Republican	23%	25%	9%	9%	5%	27%	2%	125
Not registered	12%	7%	11%	11%	6%	25%	29%	63
Democrat	23%	13%	19%	11%	10%	20%	4%	230
Independent	21%	10%	12%	12%	6%	27%	12%	101
Republican	24%	23%	10%	7%	5%	26%	4%	186
Liberal	22%	13%	17%	15%	9%	19%	5%	103
Moderate	24%	17%	15%	11%	8%	21%	4%	245
Conservative	24%	19%	11%	3%	6%	30%	6%	141
Union household	31%	18%	15%	11%	1%	15%	8%	77
Non-union	21%	16%	14%	9%	9%	25%	6%	446
5 years or less in NH	18%	14%	19%	6%	10%	17%	17%	53
6 to 10 years	18%	15%	16%	16%	8%	27%	0%	39
11 to 20 years	21%	17%	15%	15%	5%	23%	5%	104
More than 20 years	25%	16%	13%	8%	8%	24%	7%	324
18 to 34	12%	11%	22%	17%	9%	17%	13%	110
35 to 49	23%	19%	13%	9%	9%	24%	4%	156
50 to 64	29%	16%	14%	6%	6%	23%	6%	166
65 and over	22%	16%	8%	8%	4%	35%	6%	81
Male	26%	16%	14%	8%	5%	26%	6%	256
Female	20%	16%	15%	11%	10%	21%	7%	271
High school or less	9%	13%	16%	13%	7%	29%	14%	129
Some college	28%	15%	11%	10%	7%	22%	7%	138
College graduate	23%	20%	20%	8%	6%	20%	2%	163
Post-graduate	33%	14%	6%	7%	11%	25%	4%	97
Less than \$30K	10%	17%	21%	10%	6%	26%	9%	24
\$30K to \$60K	21%	19%	17%	10%	8%	22%	3%	84
\$60K to \$75K	18%	19%	27%	10%	5%	20%	0%	52
\$75K to \$100K	23%	12%	20%	8%	10%	17%	9%	56
More than \$100K	24%	21%	11%	9%	5%	26%	4%	115
Married	24%	19%	12%	8%	8%	23%	5%	359
Divorced/separated	21%	12%	13%	10%	7%	25%	11%	79
Never married	17%	8%	23%	16%	5%	23%	9%	88
Protestant	22%	21%	14%	8%	6%	24%	6%	163
Catholic	21%	18%	14%	9%	10%	21%	7%	200
Other	27%	8%	15%	11%	7%	27%	6%	152
Attend services 1 or more/week	24%	15%	13%	5%	8%	27%	8%	125
1-2 times a month	21%	20%	17%	6%	12%	18%	6%	63
Less often	22%	14%	13%	9%	10%	25%	6%	147
Never	23%	16%	15%	13%	4%	22%	7%	183
North Country	29%	7%	25%	0%	8%	28%	3%	47
Central/Lakes	18%	15%	15%	11%	9%	27%	5%	80
Connecticut Valley	14%	24%	15%	20%	8%	13%	6%	77
Mass Border	26%	18%	11%	8%	7%	20%	10%	163
Seacoast	28%	14%	18%	4%	7%	24%	5%	86
Manchester Area	20%	11%	9%	12%	7%	36%	5%	73
1st Cong. District	25%	15%	14%	6%	9%	24%	6%	248
2nd Cong. District	21%	16%	14%	12%	6%	23%	7%	279