

**THE WMUR
GRANITE STATE POLL
THE UNIVERSITY OF NEW HAMPSHIRE**

October 12, 2006

MCCAIN, CLINTON EARLY FAVORITES IN NH PRIMARY

By: Andrew E. Smith, Ph.D.
UNH Survey Center
603/862-2226
www.unh.edu/survey-center

DURHAM, NH – John McCain and Hillary Clinton are the early frontrunners in New Hampshire for their parties' nomination for President in 2008.

These findings are based on the latest **Granite State Poll**,[?] conducted by the University of New Hampshire Survey Center. The Granite State Poll is sponsored by WMUR-TV, Manchester. Five hundred fifteen (515) randomly selected New Hampshire adults were interviewed by telephone between September 15 and September 24, 2006. The margin of sampling error for the survey is +/-4.3 percent. Included in the sample were 205 likely 2008 Democratic Primary voters (margin of sampling error +/- 6.8%) and 206 likely 2008 Republican Primary voters (margin of sampling error +/- 6.8%).

Although there is more than a year to go before the First in the Nation New Hampshire Presidential Primary, prospective Republican and Democrat candidates have already been spending time in New Hampshire introducing themselves to voters and testing their messages. And as this is the first election since 1952 that neither a sitting President nor Vice President is running for election, there have been a record number of candidates of both parties testing the water in New Hampshire. The Granite State Poll has been monitoring voter sentiment about potential candidates since February 2005.

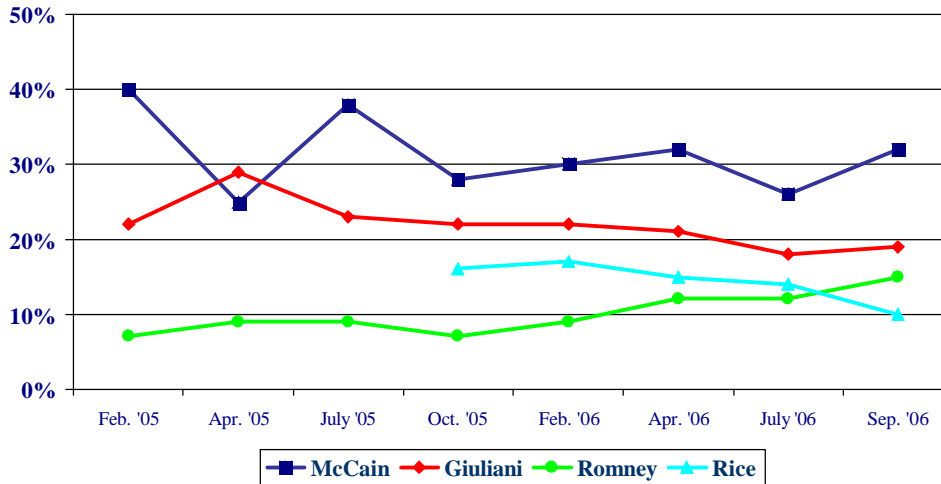
Republican Primary

Among likely Republican Primary voters, Arizona Senator John McCain has consistently been the most popular, picking up where he left off in 2000. In the most recent Granite State Poll, 32% of likely Republican Primary voters said they would vote for McCain, 19% would vote for former New York City Mayor Rudy Giuliani, 15% favor Massachusetts Governor Mitt Romney, and 10% prefer Secretary of State Condaleeza Rice. Among the less popular potential candidates are Florida Governor Jeb Bush (2%), Virginia Senator George Allen (2%), Pennsylvania Senator Rick Santorum (2%), and New York Governor George Pataki (1%), while 2% favor some other candidate and 14% are undecided.

McCain has consistently led among potential Republicans since February, 2005 and has hovered near 30% throughout that period. He is most popular among moderate Republicans. Giuliani has consistently been in second place with approximately 20% of the vote. Mitt Romney has improved in recent months from high single digits to 15%. With the exception of Rice, who has not yet indicated she plans to run, none of the other potential Republican candidates have been above low single digits.

[?] We ask that this copyrighted information be referred to as *the Granite State Poll*, sponsored by WMUR-TV.

NH Republican Presidential Primary – Likely Republican Primary Voters

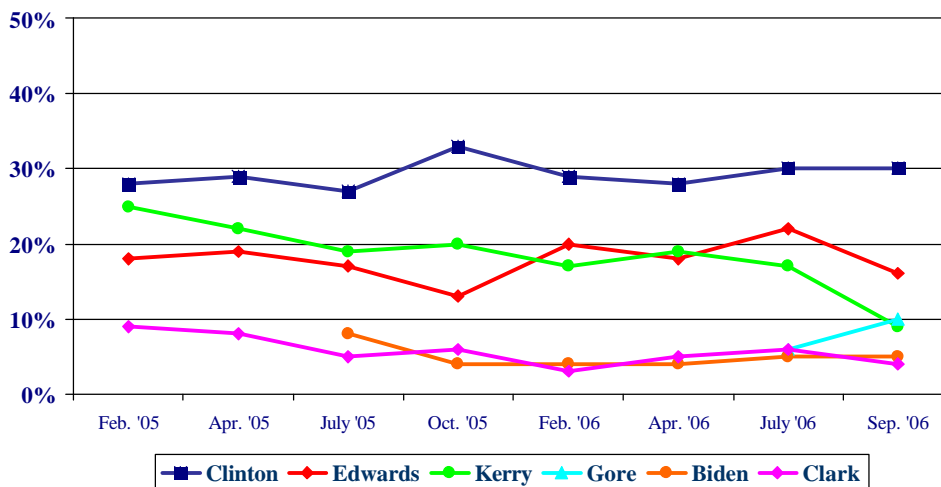


Democratic Primary

Among likely Democratic Primary voters, New York Senator Hillary Clinton has consistently been the most popular of the potential Democratic candidates. Clinton currently has the support of 30% of likely Democratic Primary voters followed by former North Carolina Senator John Edwards (16%), former Vice President Al Gore (10%), Massachusetts Senator John Kerry (9%), Delaware Senator Joe Biden (5%), retired General Wesley Clark (4%), New Mexico Governor Bill Richardson (3%), Indiana Senator Evan Bayh (1%), and former Virginia Governor Mark Warner (1%), while 4% prefer some other candidate and 17% are undecided.

Clinton has been near 30% for the past two years and remains the frontrunner. Kerry has dropped off significantly in recent months – he had been supported by approximately 20% of likely Democratic Primary voters, but that has slipped to 9% in the latest poll. Kerry’s 2004 running mate, Edwards, has been ranging in the high teens to low 20s.

NH Democratic Presidential Primary – Likely Democratic Primary Voters



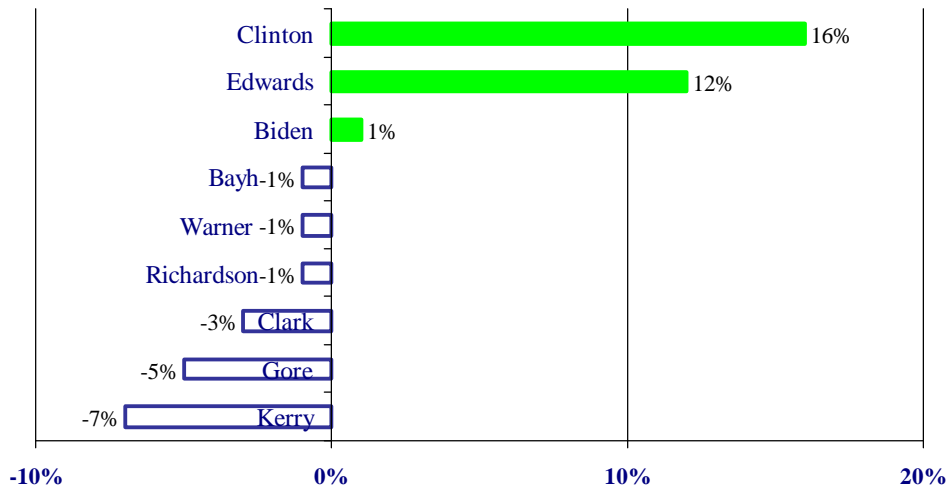
Least Popular Democratic Candidate

All likely primary voters (both Republicans and Democrats) were also asked which candidate they liked least. Among potential Democratic presidential candidates, Hillary Clinton is the least liked, named by 35% of all likely voters, followed by Kerry (16%), Gore (13%), Clark (4%), and Edwards (3%) with 10% naming some other candidate and 19% saying they don't know.

Among only likely Democratic Primary voters, Kerry is least liked of the potential Democratic candidates, named by 16%, followed by Gore (15%), Clinton (14%), Clark (7%), Richardson (5%), Biden (4%), Edwards (4%), Bayh (2%), Warner (2%), another candidate (2%), and 28% don't know.

A summary measure of popularity can be constructed by subtracting the percentage who dislike a particular candidate from the percentage who say they plan to vote for that candidate. On this measure of net popularity, Clinton is the most popular Democratic candidate with +16%, followed by Edwards (+12%). The least popular of the potential Democratic candidates among likely Democratic Primary voters are Kerry (-7%), Gore (-5%), and Clark (-3%).

Net Popularity of Potential Democratic Candidates – Likely Democratic Primary Voters



Not surprisingly, Clinton is extremely disliked by Republicans (55%), followed by Kerry (16%), and Gore (12%).

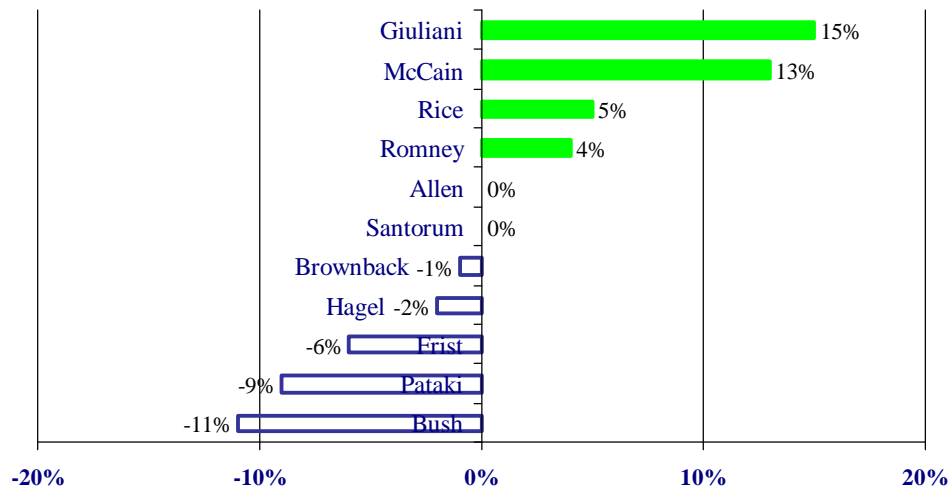
Least Popular Republican Candidate

Turning to potential Republican candidates, Jeb Bush is least liked, named by 23% of all likely primary voters (both Republicans and Democrats), followed by McCain (12%), Romney (10%), Rice (9%), Tennessee Senator Bill Frist (7%), Pataki (7%), Santorum (5%), some other candidate (9%), while 20% don't know.

Among only likely Republican Primary voters, McCain is the least popular of the potential Republican candidates, named by 19%, followed by Bush (13%), Romney (11%), Pataki (10%), Frist (6%), Rice (5%), Giuliani (4%), Santorum (2%), Allen (2%), Nebraska Senator Chuck Hagel (2%), Brownback (1%), some other candidate (1%) while 22% don't know.

Looking at the net popularity of potential Republican candidates, Giuliani is most popular with a net popularity rating of +15%, followed by McCain (+13%), Rice (+5%), Romney (+4%), Allen (0%), Santorum (0%), Brownback (-1%), Hagel (-2%), Frist (-6%), Pataki (-9%) and Jeb Bush (-11%).

Net Popularity of Potential Republican Candidates – Likely Republican Primary Voters



Jeb Bush is very unpopular among Democrats (named by 33%), followed by Rice (12%), Frist (8%), Romney (8%), Santorum (6%), McCain (5%), Pataki (3%), Allen (2%), Giuliani (2%), Hagel (1%), some other candidate (2%) and 19% don't know.

Granite State Poll Methodology

These findings are based on the most recent Granite State Poll conducted by the University of New Hampshire Survey Center from September 15 and September 24, 2006. A random sample of 515 New Hampshire adults was interviewed by telephone. In 95 of 100 cases, the statewide estimates will be accurate to plus or minus 4.3 percent. Results reported for other subgroups have potential for somewhat larger variation than those for the entire population.

The data have been weighted to adjust for numbers of adults and telephone lines within households, respondent sex, and region of the state. In addition to potential sampling error, all surveys have other potential sources of non-sampling error including question order effects, question wording effects, and non-response.

Democratic Nomination in 2008 NH Primary

"I know it is early, but if the Democratic primary for president were held today, which of the following would you support for the Democratic nomination for president ... Senator Hillary Clinton ... Senator John Kerry ... Senator John Edwards ... retired General Wesley Clark ... Governor Bill Richardson ... Senator Evan Bayh ... Senator Joe Biden ... Senator Mark Warner ... former Vice President Al Gore ...or someone else?"

	<u>Feb. '05</u>	<u>Apr. '05</u>	<u>July '05</u>	<u>Oct. '05</u>	<u>Feb. '06</u>	<u>Apr. '06</u>	<u>July '06</u>	<u>Sept. '06</u>
Senator Hillary Clinton	28%	29%	27%	33%	29%	28%	30%	30%
Senator John Kerry	25	22	19	20	17	19	17	9
Senator John Edwards	18	19	17	13	20	18	22	16
Ret. General Wesley Clark	9	8	5	6	3	5	6	4
Al Gore \$	-	-	-	-	-	-	6	10
Senator Joe Biden +	-	-	8	4	4	4	5	5
Governor Bill Richardson	2	2	2	1	4	3	1	3
Senator Evan Bayh	1	1	0	2	1	*	0	1
Governor Mark Warner @	-	-	-	-	3	*	0	1
Someone Else	5	10	6	10	14	7	5	4
Don't Know Yet	12	10	15	12	7	16	8	17
(N)	(187)	(178)	(193)	(193)	(207)	(228)	(187)	(205)

+ Added July 2005

@ Added February 2006

\$ Added July 2006

* = Less than 1%

Republican Nomination in 2008 NH Primary

"I know it is early, but if the Republican primary for president were held today, which of the following would you support for the Republican nomination for president? ... former Mayor Rudolph Giuliani ... Senator John McCain ... Senator Bill Frist ... Governor Jeb Bush ... Senator Chuck Hagel ... Senator Rick Santorum ... Senator Sam Brownback ... Governor George Pataki ... Senator George Allen ... Governor Mitt Romney ... Secretary of State Condaleeza Rice or someone else?"

	<u>Feb. '05</u>	<u>Apr. '05</u>	<u>July '05</u>	<u>Oct. '05</u>	<u>Feb. '06</u>	<u>Apr '06</u>	<u>July '06</u>	<u>Sept. '06</u>
Senator John McCain	40%	25%	38%	28%	30%	32%	26%	32%
Fmr. Mayor Rudolph Giuliani	22	29	23	22	22	21	18	19
Condaleeza Rice #	-	-	-	16	17	15	14	10
Governor Mitt Romney	7	9	9	7	9	12	12	15
Governor Jeb Bush	5	4	5	3	*	0	3	2
Senator George Allen	1	1	4	3	0	2	2	2
Senator Rick Santorum	1	3	2	0	*	0	2	2
Governor George Pataki	2	1	*	*	2	2	1	1
Senator Bill Frist	3	4	2	1	0	1	1	*
Senator Sam Brownback +	-	1	0	1	0	0	1	0
Senator Chuck Hagel +	-	0	*	0	0	0	0	0
Someone Else	4	12	3	5	6	1	6	2
Don't Know Yet	16	13	14	12	14	12	14	14
(N)	(211)	(195)	(200)	(196)	(185)	(166)	(199)	(205)

+ Added April, 2005

Added October, 2005

* = Less than 1%

**Overall Preference for Democratic Candidates
Likely Democratic Primary Voters Only**

	<u>% Vote FOR</u>	<u>% Like LEAST</u>	<u>NET Popularity</u>
Senator Hillary Clinton	30%	14%	+16%
Senator John Edwards	16	4	+12%
Senator Joe Biden	5	4	+1%
Senator Evan Bayh	1	2	-1%
Governor Mark Warner	1	2	-1%
Governor Bill Richardson	3	5	-2%
Ret. General Wesley Clark	4	7	-3%
Al Gore	10	15	-5%
Senator John Kerry	9	16	-7%
Someone Else	4	2	
Don't Know Yet	17	28	
(N)	(205)	(201)	

**Overall Preference for Republican Candidates
Likely Republican Primary Voters Only**

	<u>% Vote FOR</u>	<u>% Like LEAST</u>	<u>NET Popularity</u>
Fmr. Mayor Rudolph Giuliani	19%	4%	+15%
Senator John McCain	32	19	+13%
Condaleeza Rice	10	5	+5%
Governor Mitt Romney	15	11	+4%
Senator George Allen	2	2	0%
Senator Rick Santorum	2	2	0%
Senator Sam Brownback	0	1	-1%
Senator Chuck Hagel	0	2	-2%
Senator Bill Frist	*	6	-6%
Governor George Pataki	1	10	-9%
Governor Jeb Bush	2	13	-11%
Someone Else	2	1	
Don't Know Yet	14	22	
(N)	(205)	(204)	

* = Less than 1%

"I know it is early, but if the Republican primary for president were held today, which of the following would you support for the Republican nomination for president? ... former Mayor Rudolph Giuliani ... Senator John McCain ... Senator Bill Frist ... Governor Jeb Bush ... Senator Chuck Hagel ... Senator Rick Santorum ... Senator Sam Brownback ... Governor George Pataki ... Senator George Allen ... Governor Mitt Romney ... Secretary of State Condaleeza Rice or someone else?"

	<u>McCain</u> 32%	<u>Giuliani</u> 19%	<u>Romney</u> 15%	<u>Rice</u> 10%	<u>Other</u> 10%	<u>Undecided</u> 14%	<u>(N=)</u> 205
STATEWIDE							
Undeclared/Not Registered	35%	22%	12%	15%	8%	8%	78
Registered Republican	31%	18%	17%	7%	11%	16%	125
Independent	33%	35%	8%	0%	14%	9%	31
Republican	32%	17%	16%	12%	8%	14%	172
Moderate/Liberal	44%	20%	10%	6%	9%	11%	88
Conservative	24%	19%	19%	13%	9%	16%	108
Union household	20%	22%	20%	20%	6%	13%	31
Non-union	35%	19%	14%	9%	10%	14%	173
5 years or less in NH	27%	10%	23%	10%	17%	13%	22
6 to 10 years	37%	31%	19%	0%	11%	2%	21
11 to 20 years	34%	12%	15%	16%	12%	11%	33
More than 20 years	32%	21%	13%	11%	5%	17%	127
18 to 34	32%	31%	9%	8%	4%	16%	27
35 to 49	22%	18%	14%	15%	8%	23%	68
50 to 64	37%	20%	16%	11%	7%	10%	76
65 and over	46%	12%	20%	0%	18%	4%	29
Male	38%	21%	15%	10%	9%	7%	111
Female	25%	17%	16%	11%	10%	22%	94
High school or less	32%	23%	10%	13%	7%	15%	41
Some college	20%	25%	7%	11%	16%	21%	49
College graduate	35%	20%	20%	8%	6%	11%	79
Post-graduate	43%	6%	21%	13%	7%	10%	34
Less than \$30K	56%	10%	0%	18%	7%	9%	9
\$30K to \$60K	33%	25%	8%	13%	2%	19%	37
\$60K to \$75K	21%	6%	29%	19%	6%	19%	23
\$75K to \$100K	46%	16%	10%	7%	2%	18%	32
More than \$100K	36%	18%	17%	8%	14%	7%	43
Married	33%	16%	17%	12%	10%	11%	165
Divorced/separated	33%	29%	6%	8%	3%	21%	23
Never married	26%	35%	5%	0%	4%	30%	15
Protestant	33%	15%	16%	10%	13%	13%	87
Catholic	28%	23%	15%	14%	9%	10%	71
Other	35%	26%	18%	6%	0%	16%	37
Attend services 1 or more/week	30%	15%	21%	10%	12%	11%	59
1-2 times a month	24%	22%	14%	13%	8%	19%	28
Less often	36%	26%	14%	4%	9%	11%	53
Never	35%	17%	13%	15%	5%	15%	58
North Country	34%	21%	6%	0%	14%	24%	20
Central/Lakes	32%	19%	10%	3%	12%	24%	28
Connecticut Valley	57%	8%	12%	5%	4%	14%	34
Mass Border	26%	22%	21%	13%	10%	8%	68
Seacoast	32%	25%	12%	10%	7%	14%	27
Manchester Area	17%	17%	19%	24%	12%	10%	28
1st Cong. District	28%	23%	12%	16%	9%	12%	104
2nd Cong. District	36%	15%	18%	4%	11%	16%	100

“I know it is early, but if the Democratic primary for president were held today, which of the following would you support for the Democratic nomination for president ... Senator Hillary Clinton ... Senator John Kerry ... Senator John Edwards ... retired General Wesley Clark ... Governor Bill Richardson ... Senator Evan Bayh ... Senator Joe Biden ... Senator Mark Warner ... former Vice President Al Gore ...or someone else?”

	<u>Clinton</u> 30%	<u>Edwards</u> 16%	<u>Gore</u> 10%	<u>Kerry</u> 9%	<u>Biden</u> 5%	<u>Clark</u> 4%	<u>Other</u> 8%	<u>Undecided</u> 17%	<u>(N=)</u> 204
STATEWIDE									
Registered Democrat	26%	11%	13%	12%	8%	5%	7%	18%	113
Undeclared/Not Registered	37%	23%	8%	5%	2%	4%	9%	13%	88
Democrat	31%	16%	10%	9%	5%	4%	6%	18%	177
Independent	23%	21%	12%	0%	7%	7%	20%	10%	25
Liberal	36%	17%	11%	6%	5%	5%	5%	15%	58
Moderate/Conservative	28%	16%	12%	8%	6%	4%	9%	16%	128
Union household	26%	17%	14%	6%	1%	5%	10%	22%	33
Non-union	31%	16%	10%	9%	6%	4%	8%	16%	170
5 years or less in NH	23%	8%	13%	16%	0%	9%	10%	22%	21
6 to 10 years	43%	3%	19%	10%	9%	3%	9%	3%	19
11 to 20 years	33%	23%	17%	8%	5%	4%	6%	4%	40
More than 20 years	29%	18%	7%	7%	6%	4%	7%	22%	122
18 to 34	48%	5%	8%	6%	3%	3%	9%	18%	29
35 to 49	36%	23%	10%	9%	1%	4%	6%	10%	74
50 to 64	24%	13%	12%	6%	9%	5%	9%	22%	72
65 and over	14%	14%	10%	16%	12%	9%	5%	19%	24
Male	19%	19%	16%	9%	4%	8%	11%	14%	87
Female	39%	14%	7%	9%	6%	2%	5%	18%	117
High school or less	40%	8%	4%	15%	2%	7%	4%	19%	51
Some college	29%	23%	9%	11%	2%	0%	7%	20%	46
College graduate	24%	16%	18%	3%	9%	6%	9%	16%	53
Post-graduate	29%	19%	11%	5%	8%	5%	9%	13%	52
Less than \$30K	48%	13%	7%	10%	5%	0%	0%	18%	19
\$30K to \$60K	29%	19%	11%	3%	2%	6%	7%	23%	40
\$60K to \$75K	20%	14%	16%	24%	0%	9%	9%	7%	22
\$75K to \$100K	36%	27%	9%	0%	2%	5%	9%	12%	25
More than \$100K	25%	25%	13%	3%	7%	1%	12%	14%	39
Married	26%	18%	12%	9%	7%	5%	7%	16%	145
Divorced/separated	33%	11%	6%	9%	3%	3%	9%	27%	28
Never married	49%	14%	7%	6%	0%	3%	7%	13%	28
Protestant	36%	16%	7%	8%	1%	4%	9%	19%	67
Catholic	28%	16%	11%	8%	6%	2%	8%	21%	66
Other	29%	16%	14%	8%	8%	8%	5%	11%	65
Attend services 1 or more/week	32%	12%	3%	6%	8%	4%	14%	20%	42
1-2 times a month	18%	26%	12%	4%	3%	7%	17%	14%	31
Less often	38%	7%	15%	4%	6%	1%	8%	21%	59
Never	30%	22%	11%	14%	3%	8%	0%	13%	65
North Country	62%	0%	0%	8%	0%	8%	0%	22%	10
Central/Lakes	23%	14%	12%	9%	3%	0%	8%	30%	35
Connecticut Valley	22%	16%	12%	11%	8%	5%	9%	18%	33
Mass Border	24%	13%	16%	6%	13%	5%	4%	19%	43
Seacoast	36%	23%	6%	1%	2%	4%	17%	10%	37
Manchester Area	37%	19%	9%	16%	0%	6%	6%	8%	45
1st Cong. District	37%	18%	7%	6%	4%	4%	11%	14%	112
2nd Cong. District	22%	14%	14%	12%	7%	5%	5%	20%	92

“Which of the following Democratic presidential candidates would you say you like the LEAST? ... Senator Hillary Clinton ... Senator John Kerry ... former Senator John Edwards ... General Wesley Clark ... Governor Bill Richardson ... Senator Evan Bayh ... Senator Joe Biden ... former Governor Mark Warner ... former Vice President Al Gore ... or someone else?”

	<u>Clinton</u> 35%	<u>Kerry</u> 16%	<u>Gore</u> 13%	<u>Clark</u> 4%	<u>Edwards</u> 3%	<u>Other</u> 10%	<u>Don't Know</u> 19%	<u>(N=)</u> 404
STATEWIDE								
Likely Democratic Primary Voters	14%	16%	15%	7%	4%	16%	28%	201
Likely Republican Primary Voters	55%	16%	12%	1%	2%	4%	10%	204
Democrat	16%	14%	13%	7%	4%	17%	28%	184
Independent	31%	30%	11%	1%	1%	9%	17%	41
Republican	56%	14%	13%	1%	2%	4%	10%	174
Liberal	24%	15%	17%	10%	1%	12%	21%	65
Moderate	28%	15%	13%	4%	4%	13%	23%	183
Conservative	53%	19%	12%	1%	2%	6%	7%	129
Union household	47%	9%	13%	6%	0%	5%	20%	62
Non-union	33%	17%	13%	4%	3%	11%	19%	340
5 years or less in NH	26%	18%	12%	3%	0%	17%	25%	42
6 to 10 years	46%	13%	12%	3%	4%	13%	9%	39
11 to 20 years	30%	28%	15%	6%	1%	5%	16%	72
More than 20 years	36%	12%	13%	4%	3%	10%	20%	245
18 to 34	32%	26%	12%	2%	0%	8%	22%	56
35 to 49	29%	19%	16%	4%	3%	7%	22%	142
50 to 64	39%	12%	13%	5%	3%	15%	13%	144
65 and over	43%	6%	9%	4%	2%	11%	25%	53
Male	39%	21%	11%	3%	1%	11%	15%	195
Female	31%	11%	15%	5%	5%	10%	23%	209
High school or less	31%	17%	18%	1%	1%	7%	25%	90
Some college	31%	14%	12%	6%	6%	12%	19%	95
College graduate	41%	14%	14%	2%	1%	12%	17%	131
Post-graduate	35%	19%	10%	8%	3%	10%	16%	84
Less than \$30K	26%	11%	21%	9%	2%	6%	26%	28
\$30K to \$60K	36%	16%	10%	5%	1%	13%	20%	77
\$60K to \$75K	25%	13%	22%	3%	1%	6%	29%	45
\$75K to \$100K	21%	24%	23%	3%	6%	11%	12%	57
More than \$100K	45%	11%	8%	5%	2%	16%	13%	80
Married	38%	12%	16%	5%	2%	9%	18%	308
Divorced/separated	33%	15%	8%	1%	5%	14%	24%	49
Never married	15%	40%	5%	2%	1%	14%	22%	43
Protestant	38%	16%	11%	1%	3%	13%	18%	154
Catholic	32%	16%	18%	4%	3%	9%	18%	134
Other	33%	17%	11%	7%	1%	10%	21%	101
Attend services 1 or more/week	44%	15%	12%	2%	3%	12%	11%	97
1-2 times a month	29%	16%	14%	5%	6%	12%	19%	60
Less often	29%	18%	17%	1%	2%	9%	25%	111
Never	35%	14%	11%	7%	2%	10%	20%	122
North Country	51%	13%	15%	0%	2%	3%	17%	30
Central/Lakes	30%	20%	18%	1%	0%	10%	21%	61
Connecticut Valley	29%	19%	14%	4%	6%	7%	21%	66
Mass Border	41%	12%	13%	3%	3%	12%	16%	110
Seacoast	32%	17%	16%	8%	2%	15%	11%	63
Manchester Area	30%	15%	6%	7%	5%	10%	27%	72
1st Cong. District	32%	19%	12%	4%	3%	12%	18%	213
2nd Cong. District	38%	12%	15%	3%	3%	8%	20%	191

“Which of the following Republican presidential candidates would you say you like the LEAST? ... former Mayor Rudolph Giuliani ... Senator John McCain ... Senator Bill Frist ... Governor Jeb Bush ... Senator Chuck Hagel ... Senator Rick Santorum ... Senator Sam Brownback ... Governor George Pataki ... Senator George Allen ... Governor Mitt Romney ... Secretary of State Condaleeza Rice or someone else?”

	<u>Jeb Bush</u> 23%	<u>McCain</u> 12%	<u>Romney</u> 10%	<u>Rice</u> 9%	<u>Frist</u> 7%	<u>Pataki</u> 7%	<u>Santorum</u> 5%	<u>Other</u> 9%	<u>Don't Know</u> 20%	<u>(N=)</u> 407
STATEWIDE										
Likely Democratic Primary Voters	33%	5%	8%	12%	8%	3%	6%	6%	19%	203
Likely Republican Primary Voters	13%	19%	11%	5%	6%	10%	2%	12%	22%	204
Democrat	34%	3%	8%	13%	9%	3%	7%	6%	17%	186
Independent	36%	6%	16%	4%	3%	1%	0%	17%	17%	41
Republican	8%	22%	10%	6%	6%	12%	3%	9%	24%	175
Liberal	26%	8%	16%	20%	10%	0%	5%	7%	8%	68
Moderate	31%	6%	8%	6%	9%	4%	7%	8%	20%	184
Conservative	12%	22%	10%	7%	2%	13%	0%	10%	24%	129
Union household	30%	15%	9%	6%	4%	4%	6%	10%	18%	65
Non-union	21%	11%	10%	9%	8%	7%	4%	8%	21%	340
5 years or less in NH	21%	16%	9%	10%	20%	8%	0%	2%	16%	43
6 to 10 years	12%	21%	10%	2%	12%	9%	15%	5%	14%	40
11 to 20 years	22%	5%	8%	19%	2%	10%	2%	13%	17%	72
More than 20 years	25%	12%	10%	7%	6%	5%	4%	9%	23%	247
18 to 34	21%	12%	7%	14%	3%	2%	10%	3%	27%	56
35 to 49	23%	16%	11%	10%	6%	7%	1%	7%	20%	142
50 to 64	25%	9%	12%	6%	10%	7%	6%	14%	13%	147
65 and over	20%	11%	1%	5%	6%	11%	5%	5%	37%	53
Male	15%	16%	9%	9%	8%	10%	7%	13%	14%	197
Female	31%	8%	10%	9%	6%	3%	3%	5%	27%	210
High school or less	19%	9%	11%	11%	1%	9%	5%	6%	31%	91
Some college	20%	17%	8%	7%	6%	5%	4%	7%	26%	95
College graduate	22%	14%	10%	9%	10%	7%	6%	8%	14%	131
Post-graduate	32%	6%	10%	9%	10%	5%	2%	14%	13%	87
Less than \$30K	34%	7%	10%	9%	6%	3%	3%	9%	20%	28
\$30K to \$60K	21%	11%	8%	12%	3%	6%	5%	8%	27%	78
\$60K to \$75K	19%	22%	3%	10%	9%	10%	3%	0%	24%	45
\$75K to \$100K	21%	6%	13%	7%	11%	8%	3%	5%	26%	58
More than \$100K	23%	13%	11%	5%	12%	7%	7%	14%	7%	81
Married	21%	13%	10%	8%	8%	6%	5%	10%	19%	311
Divorced/separated	37%	5%	7%	8%	2%	11%	1%	7%	22%	49
Never married	24%	12%	7%	13%	8%	2%	1%	4%	29%	43
Protestant	24%	9%	10%	7%	11%	8%	2%	9%	21%	155
Catholic	26%	11%	12%	6%	4%	7%	5%	11%	19%	136
Other	17%	18%	8%	16%	6%	4%	5%	5%	21%	101
Attend services 1 or more/week	19%	15%	6%	7%	11%	13%	7%	8%	13%	100
1-2 times a month	29%	8%	7%	8%	10%	3%	1%	13%	19%	60
Less often	24%	10%	13%	6%	4%	3%	2%	11%	27%	111
Never	20%	13%	12%	13%	5%	7%	5%	5%	20%	122
North Country	26%	11%	16%	3%	6%	6%	3%	3%	26%	30
Central/Lakes	30%	4%	7%	9%	9%	5%	2%	7%	27%	63
Connecticut Valley	19%	9%	3%	2%	14%	16%	5%	7%	25%	66
Mass Border	19%	17%	11%	9%	2%	8%	5%	12%	17%	110
Seacoast	25%	13%	9%	8%	10%	2%	10%	9%	15%	63
Manchester Area	23%	13%	14%	17%	3%	1%	2%	9%	18%	73
1st Cong. District	23%	11%	15%	11%	6%	5%	5%	10%	15%	214
2nd Cong. District	23%	12%	4%	6%	8%	8%	4%	7%	26%	193