

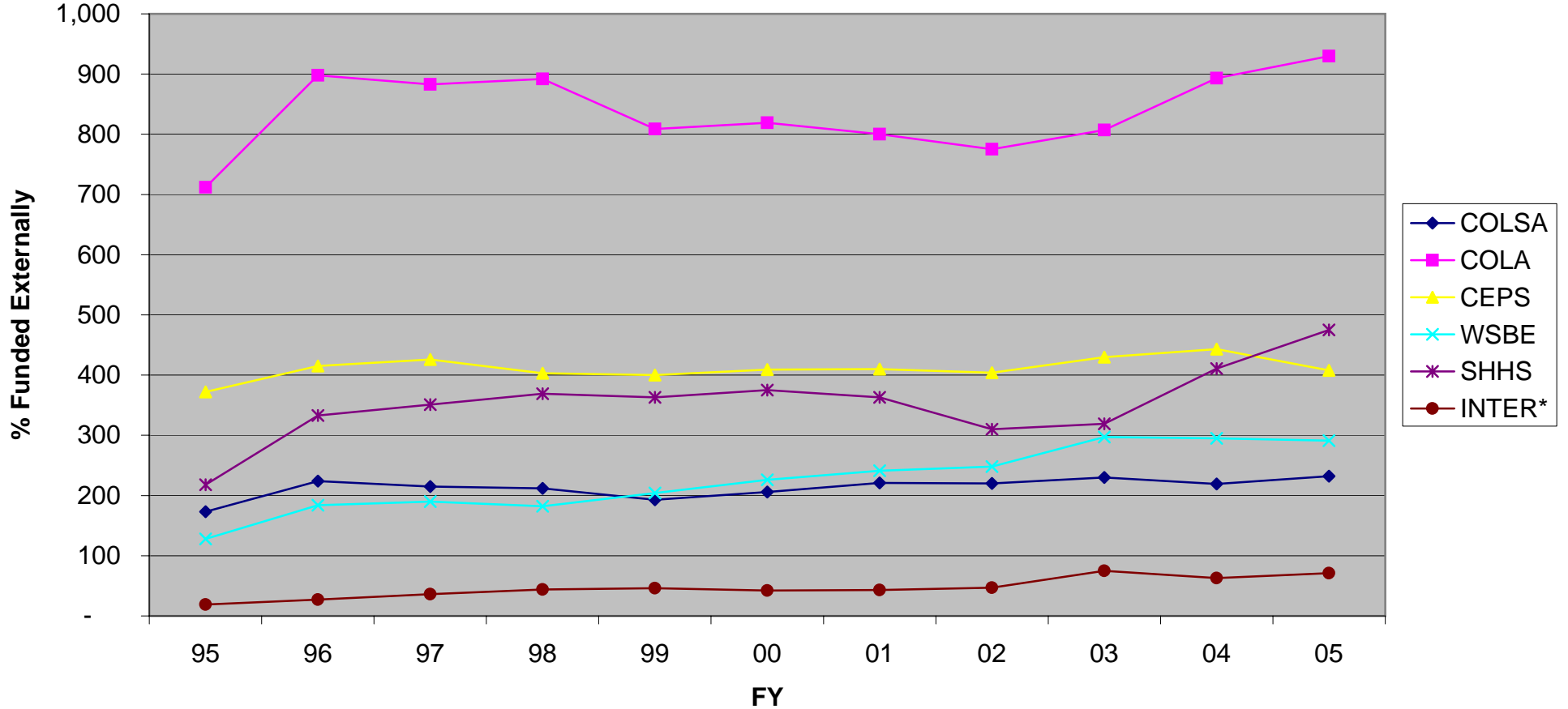
Graduate Student Enrollments

Fall Semesters - FY 95 to 05

Shows number of Graduate Student enrollments - Full & Part-time

	95	96	97	98	99	00	01	02	03	04	05	Percent Change			Avg. Annual Growth		
												1995-2000	2001-2005	1995-2005	1995-2000	2001-2005	1995-2005
COLSA	173	224	215	212	193	206	221	220	230	219	232	19.1%	5.0%	34.1%	4.5%	1.2%	3.3%
COLA	712	898	883	892	809	819	800	775	807	893	930	15.0%	16.3%	30.6%	3.6%	3.8%	3.0%
CEPS	372	415	426	403	400	409	410	404	430	443	408	9.9%	-0.5%	9.7%	2.4%	-0.1%	1.0%
WSBE	128	184	190	182	204	226	241	248	297	295	291	76.6%	20.7%	127.3%	15.3%	4.8%	9.6%
SHHS	218	333	351	369	363	375	363	310	319	411	475	72.0%	30.9%	117.9%	14.5%	7.0%	9.0%
INTER*	19	27	36	44	46	42	43	47	75	63	71	121.1%	65.1%	273.7%	21.9%	13.4%	15.8%
Overall	1,622	2,081	2,101	2,102	2,015	2,077	2,078	2,004	2,158	2,324	2,407	28.1%	15.8%	48.4%	6.4%	3.7%	4.5%

Graduate Student Enrollments by College



*NOTE: INTER category consists of students not designated to a college due to their interdisciplinary course study.