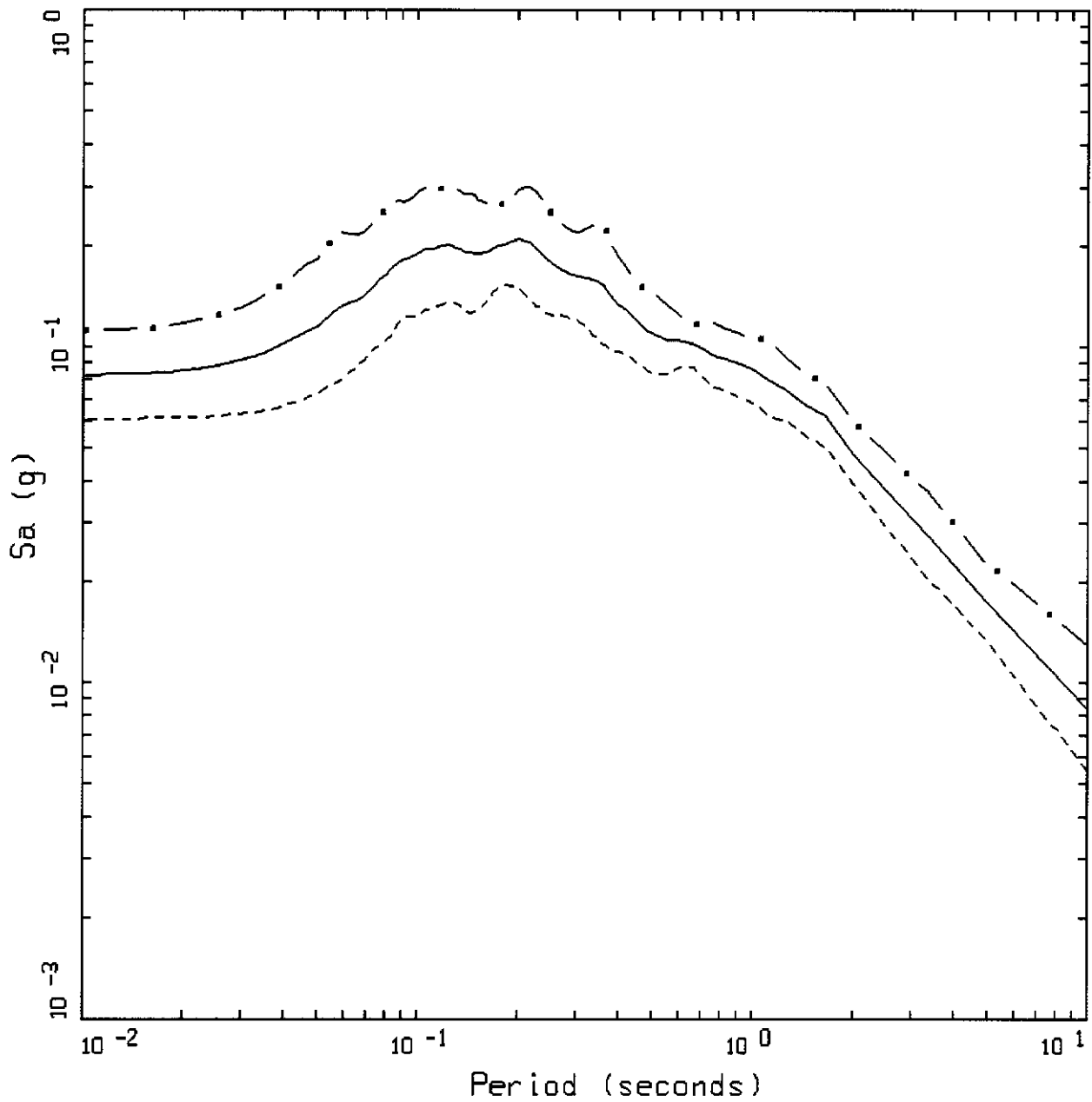


## **APPENDIX C: PACIFIC ENGINEERING PLOT PACKAGE**

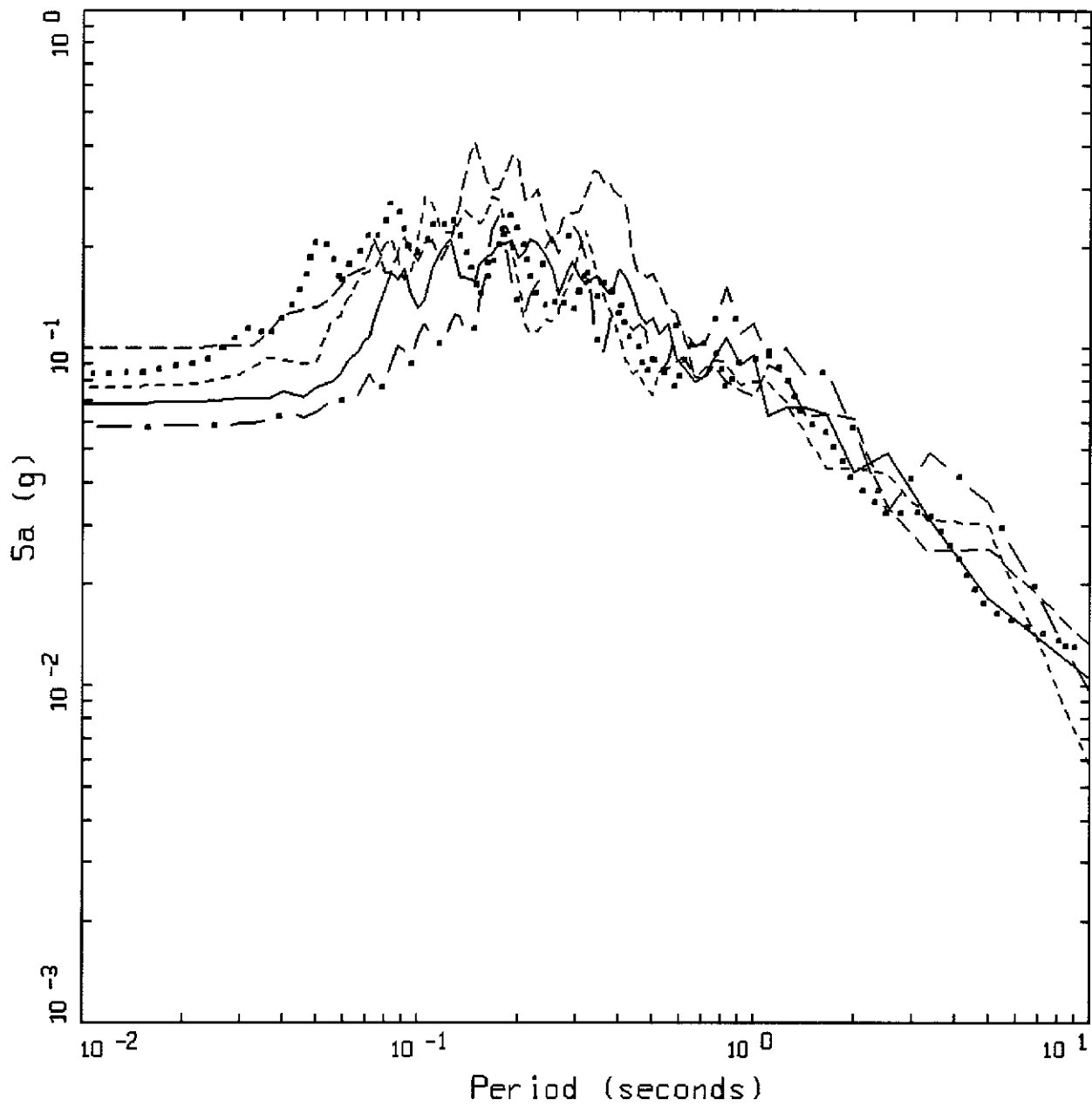
- 1) Spectral acceleration (Sa) plots with the 16<sup>th</sup>, 50<sup>th</sup> and 84<sup>th</sup> percentile for Treasure Island (one plot)
- 2) Individual Sa plots for 30 realizations at Treasure Island (6 plots with five realizations shown per plot)
- 3) Individual acceleration time history plots for Treasure Island (3 plots with 10 realizations shown per plot)
- 4) Individual velocity time history plots for Treasure Island (3 plots with 10 realizations shown per plot)
- 5) Individual displacement time history plots for Treasure Island (3 plots with 10 realizations shown per plot)
- 6) Spectral acceleration (Sa) plots with the 16<sup>th</sup>, 50<sup>th</sup> and 84<sup>th</sup> percentile for Yerba Buena Island (one plot)
- 7) Individual Sa plots for 30 realizations at Yerba Buena Island (6 plots with five realizations shown per plot)
- 8) Individual acceleration time history plots for Yerba Buena Island (3 plots with 10 realizations shown per plot)
- 9) Individual velocity time history plots for Yerba Buena Island (3 plots with 10 realizations shown per plot)
- 10) Individual displacement time history plots for Yerba Buena Island (3 plots with 10 realizations shown per plot)



TREASURE ISLAND SIMULATIONS  
 PE&A MODEL FOR TREASURE ISLAND (ROCK OUTCROP AT SURFACE)

LEGEND

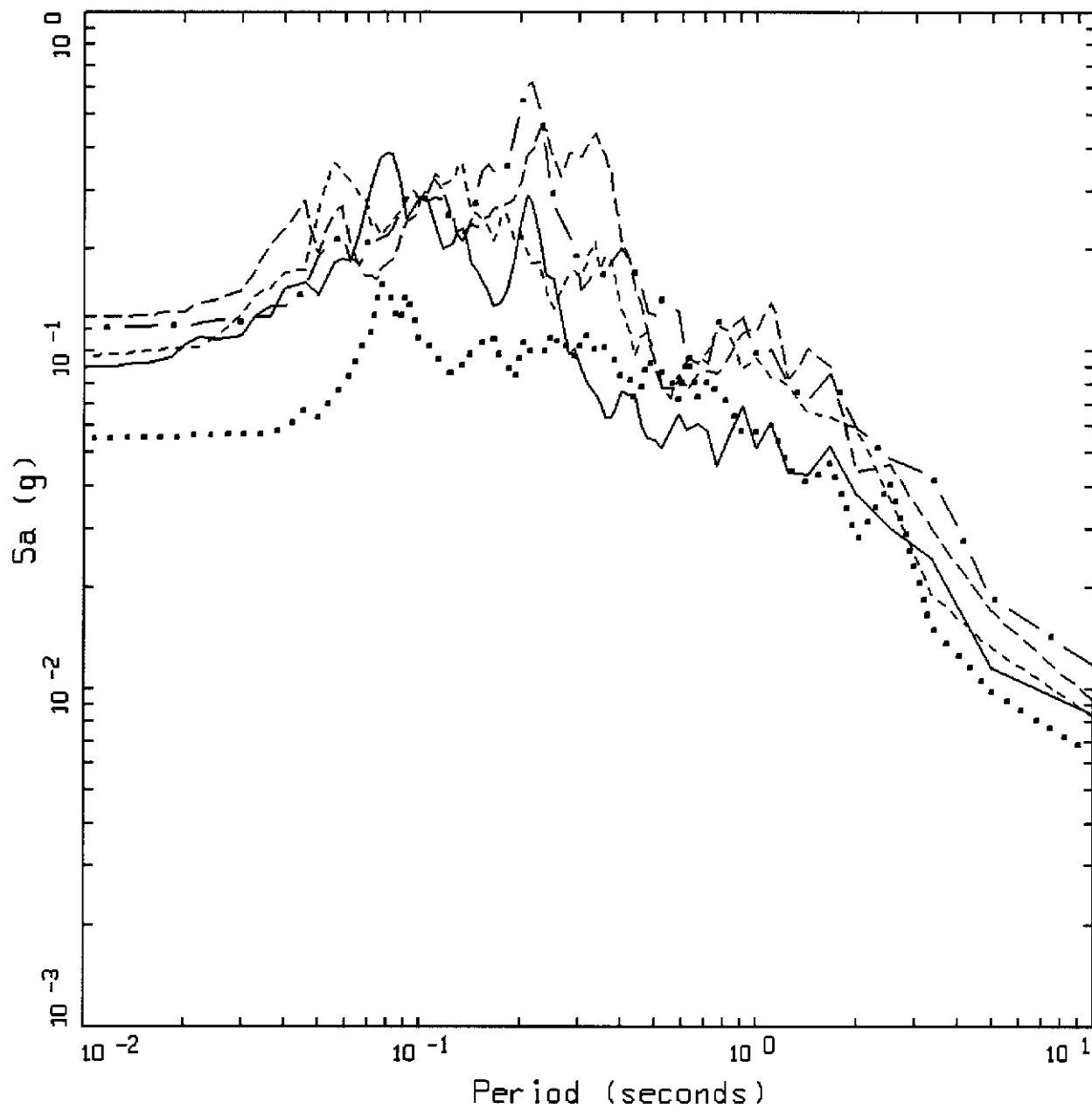
- • — 84TH PERCENTILE, PGA = 0.112 G
- 50TH PERCENTILE, PGA = 0.083 G
- 16TH PERCENTILE, PGA = 0.061 G



SAN ANDREAS  
M = 7.9, TI SURFACE ROCK

LEGEND

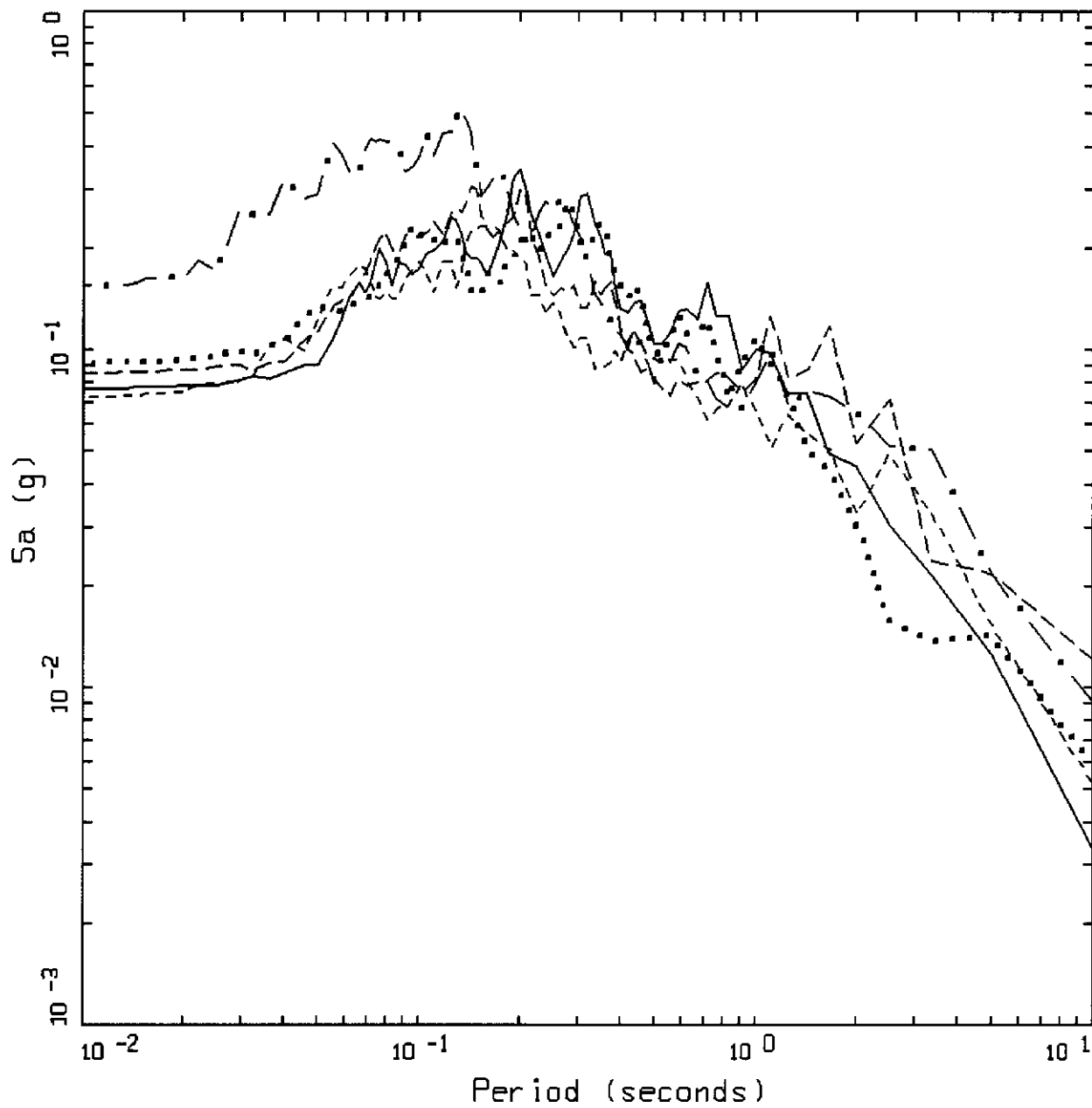
- 5 %, RESPONSE SPECTRA, RAS0001
- ..... 5 %, RESPONSE SPECTRA, RAS0002
- 5 %, RESPONSE SPECTRA, RAS0003
- 5 %, RESPONSE SPECTRA, RAS0004
- . - 5 %, RESPONSE SPECTRA, RAS0005



SAN ANDREAS  
M = 7.9, TI SURFACE ROCK

LEGEND

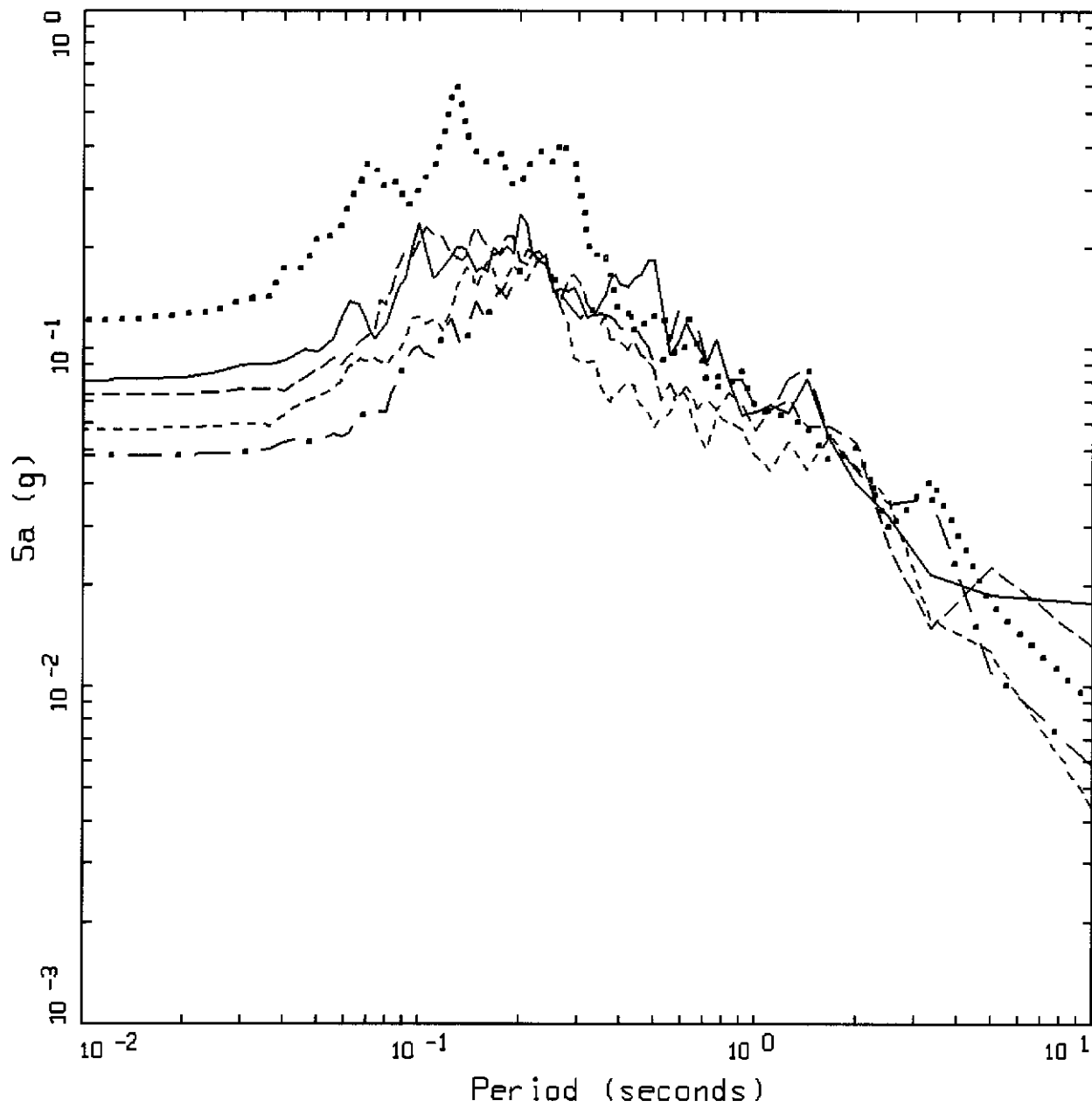
- 5 %, RESPONSE SPECTRA, RAS0006
- ..... 5 %, RESPONSE SPECTRA, RAS0007
- 5 %, RESPONSE SPECTRA, RAS0008
- 5 %, RESPONSE SPECTRA, RAS0009
- . - 5 %, RESPONSE SPECTRA, RAS0010



SAN ANDREAS  
 M = 7.9, TI SURFACE ROCK

LEGEND

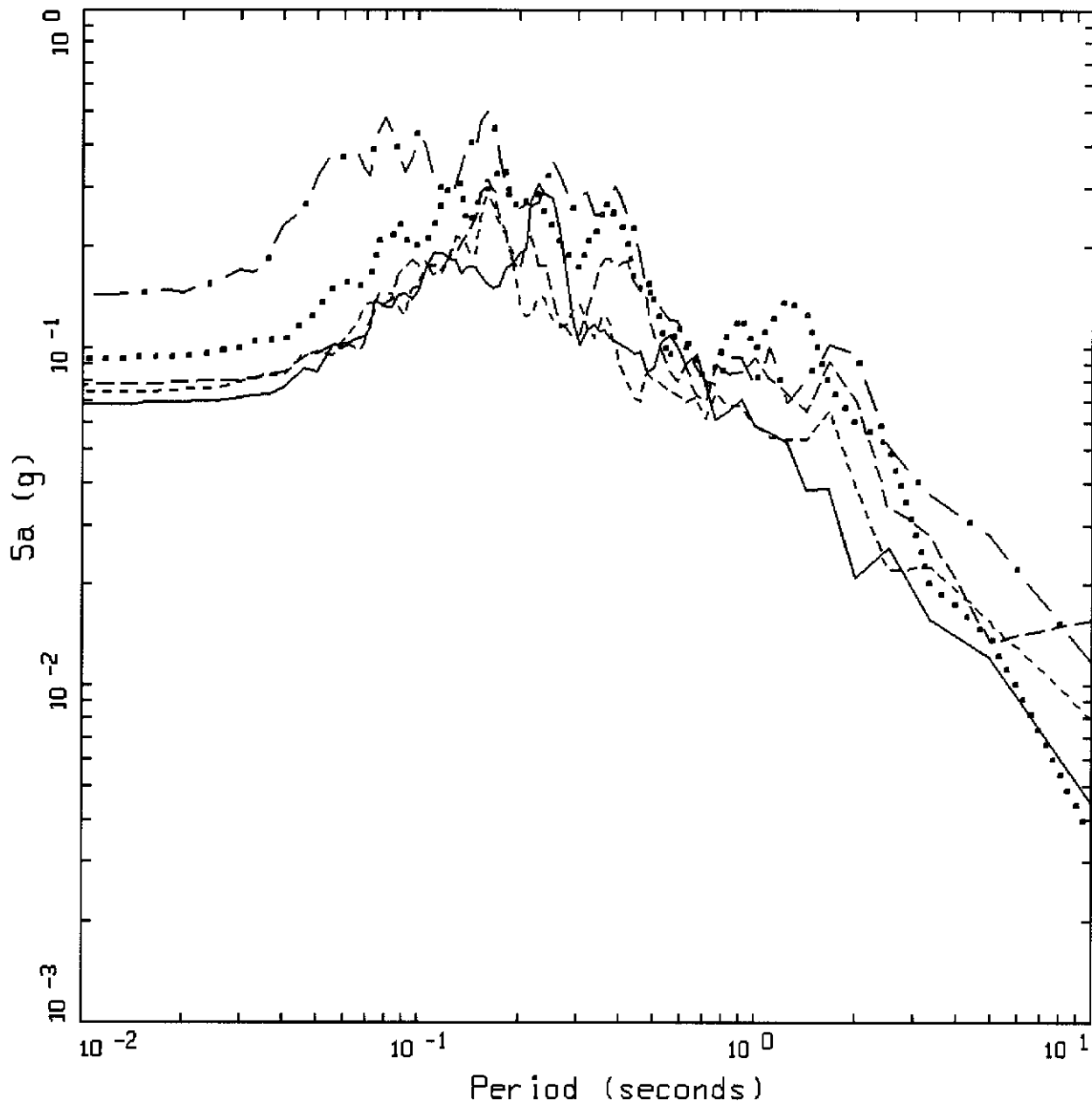
- 5 %, RESPONSE SPECTRA, RAS0011
- ..... 5 %, RESPONSE SPECTRA, RAS0012
- 5 %, RESPONSE SPECTRA, RAS0013
- 5 %, RESPONSE SPECTRA, RAS0014
- . - 5 %, RESPONSE SPECTRA, RAS0015



SAN ANDREAS  
M = 7.9, TI SURFACE ROCK

LEGEND

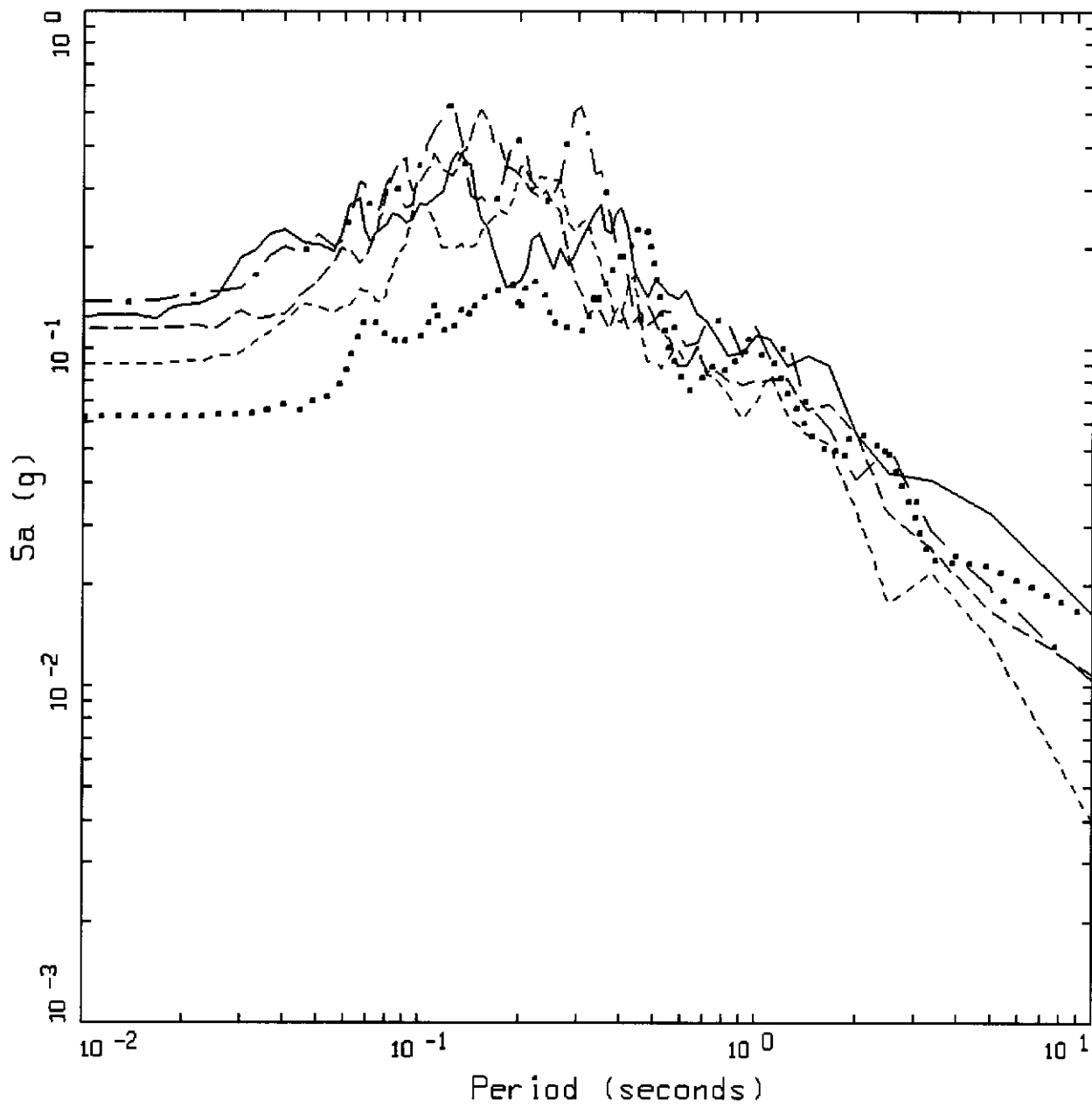
- 5 %, RESPONSE SPECTRA, RAS0016
- ..... 5 %, RESPONSE SPECTRA, RAS0017
- 5 %, RESPONSE SPECTRA, RAS0018
- 5 %, RESPONSE SPECTRA, RAS0019
- . - . 5 %, RESPONSE SPECTRA, RAS0020



SAN ANDREAS  
M = 7.9, TI SURFACE ROCK

LEGEND

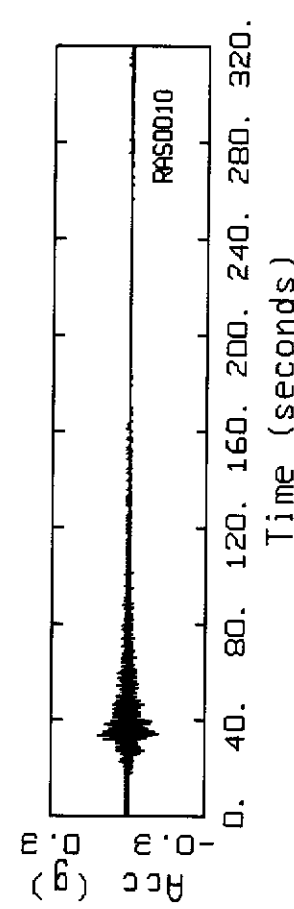
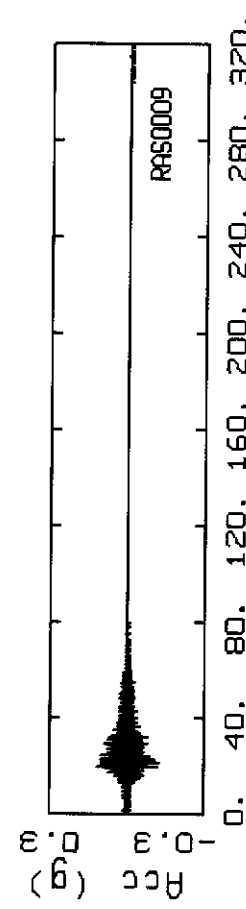
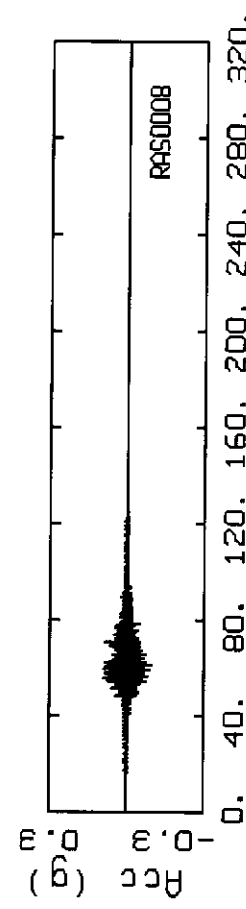
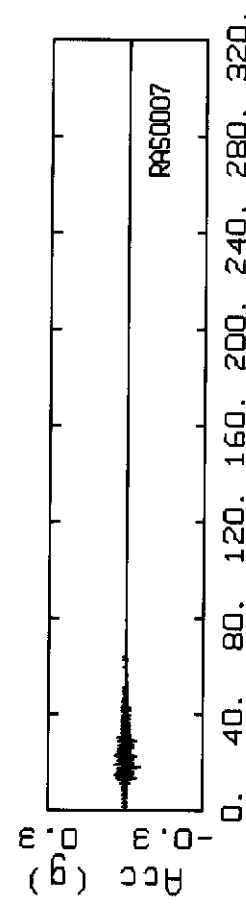
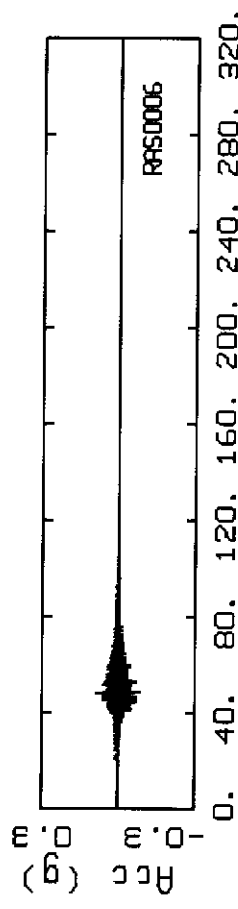
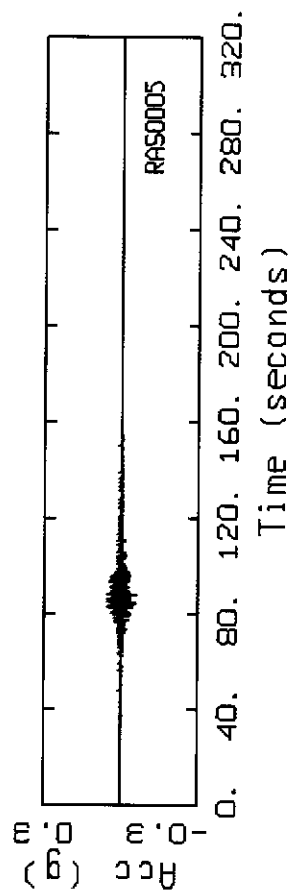
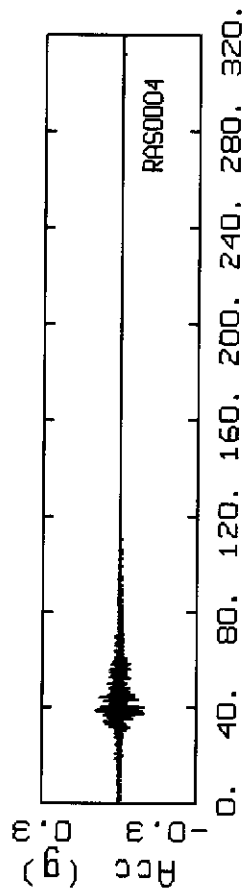
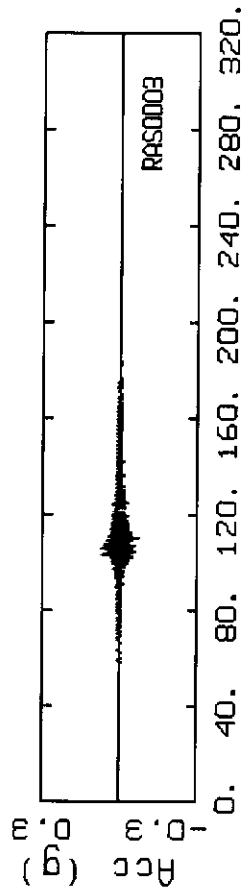
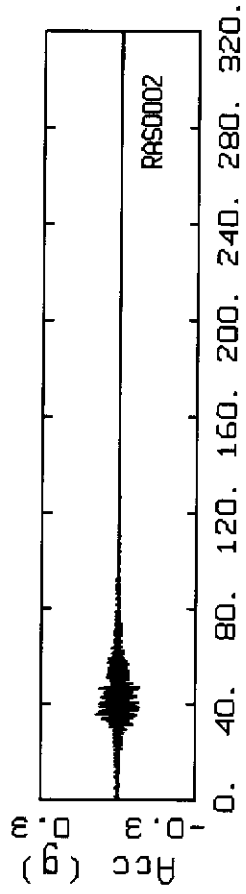
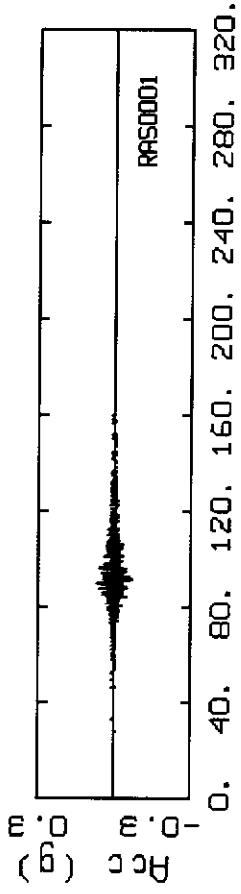
- 5 %, RESPONSE SPECTRA, RAS0021
- ..... 5 %, RESPONSE SPECTRA, RAS0022
- 5 %, RESPONSE SPECTRA, RAS0023
- 5 %, RESPONSE SPECTRA, RAS0024
- . - . 5 %, RESPONSE SPECTRA, RAS0025



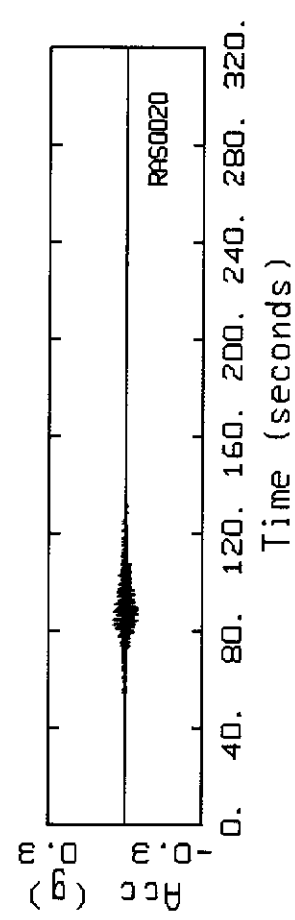
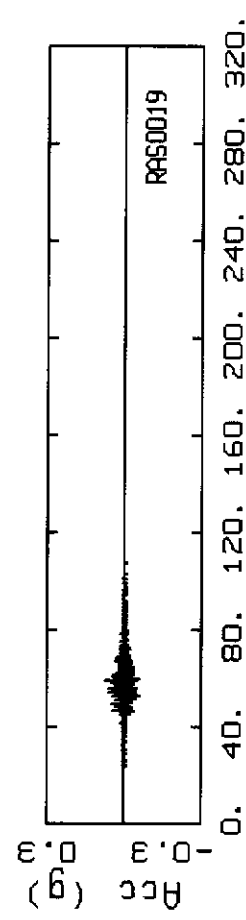
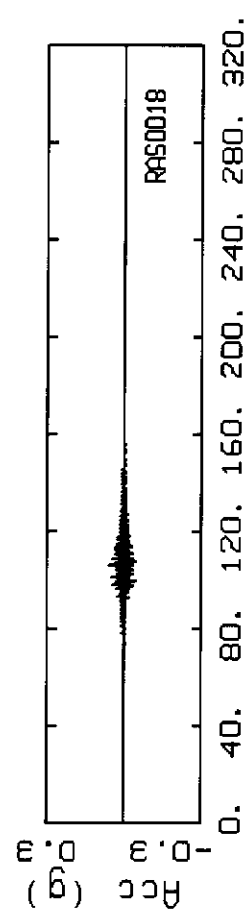
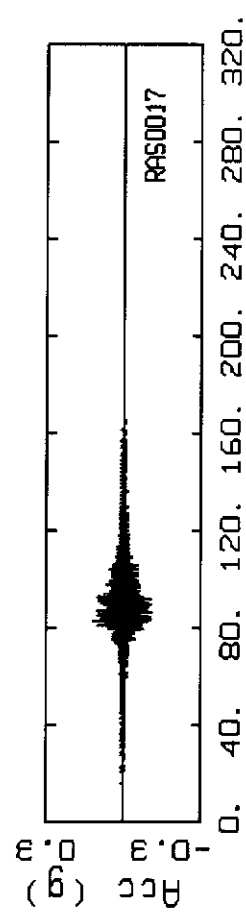
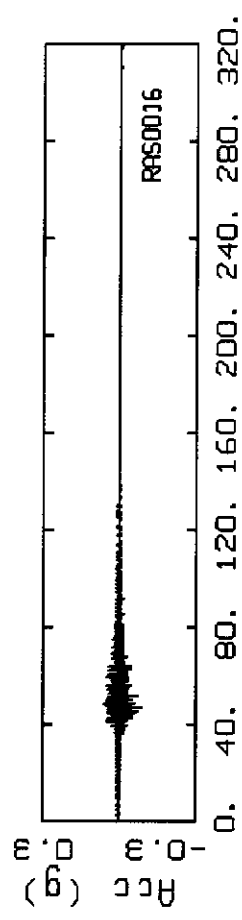
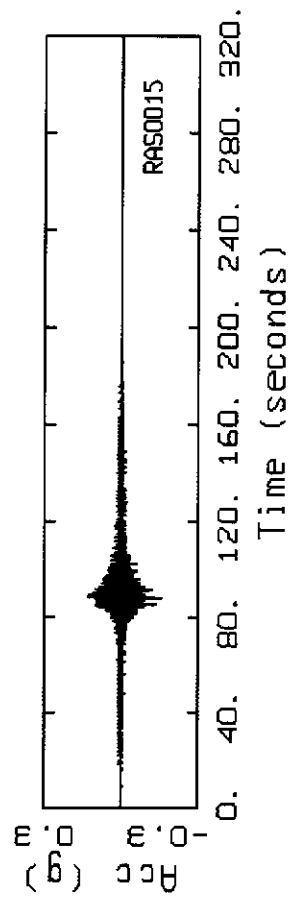
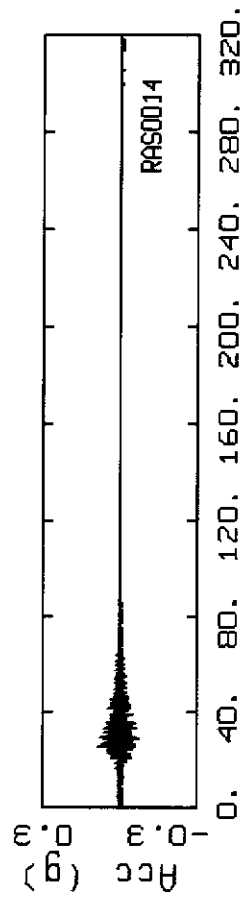
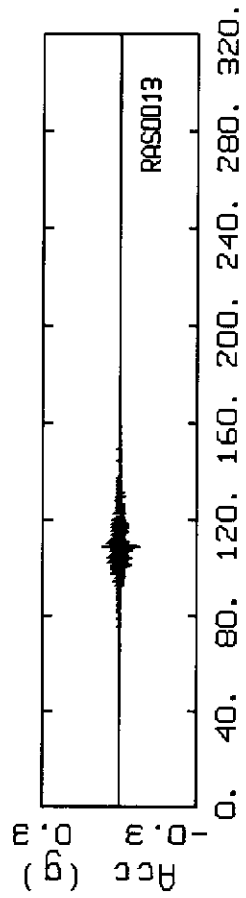
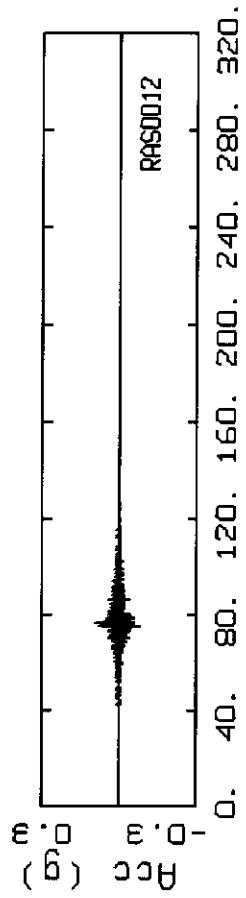
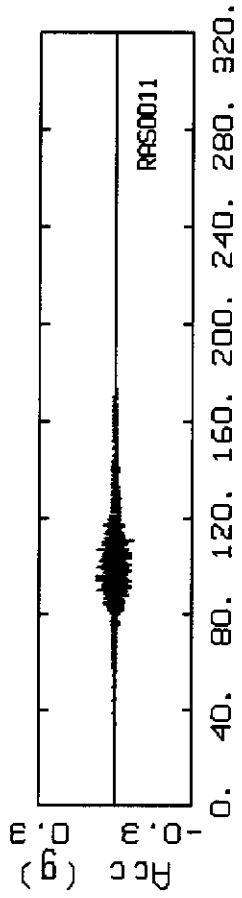
SAN ANDREAS  
M = 7.9, TI SURFACE ROCK

LEGEND

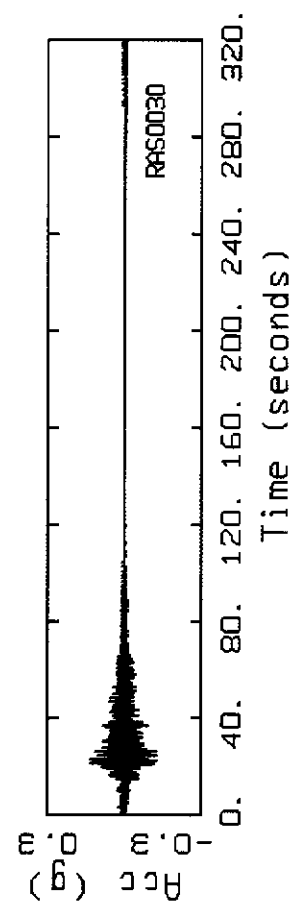
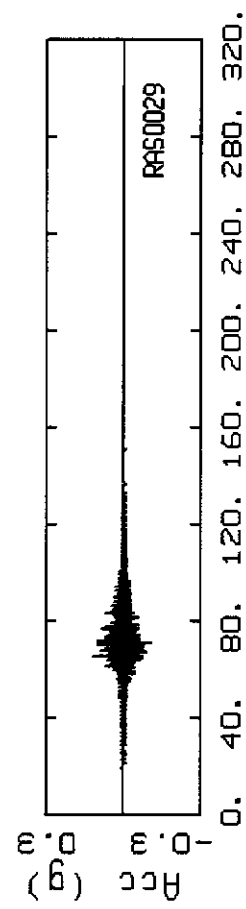
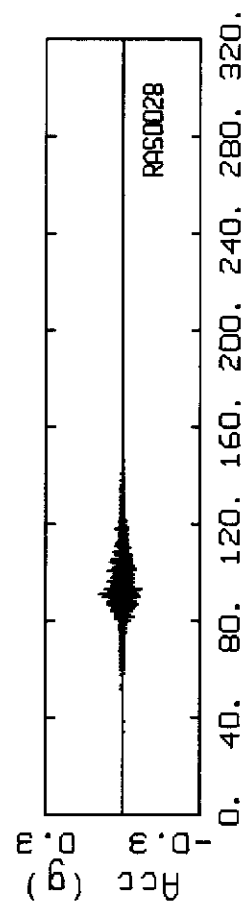
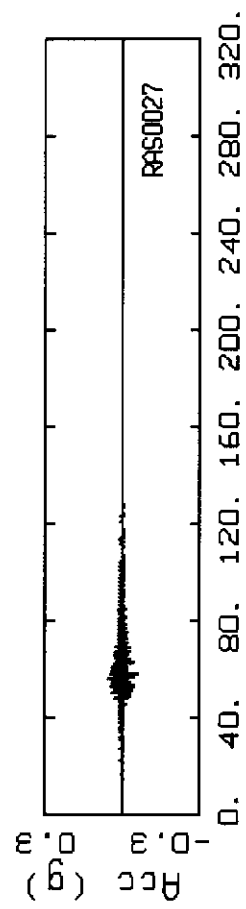
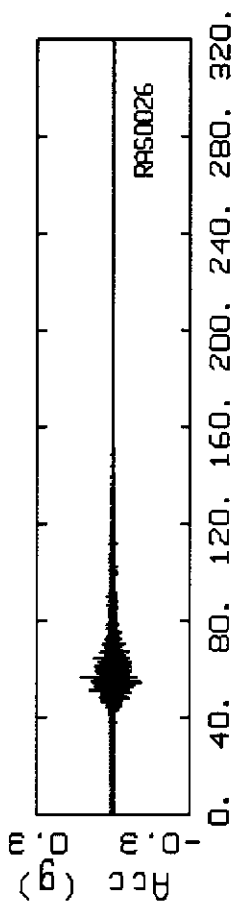
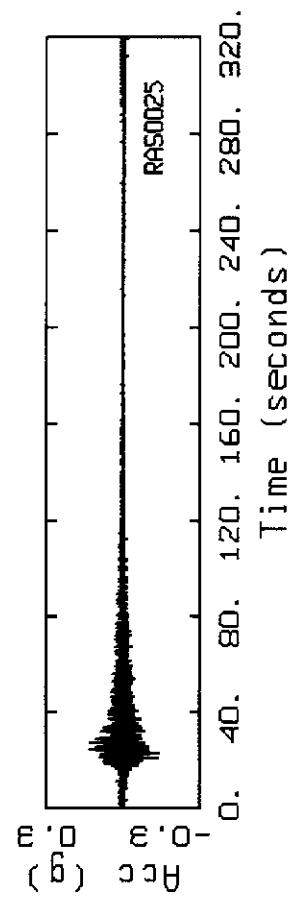
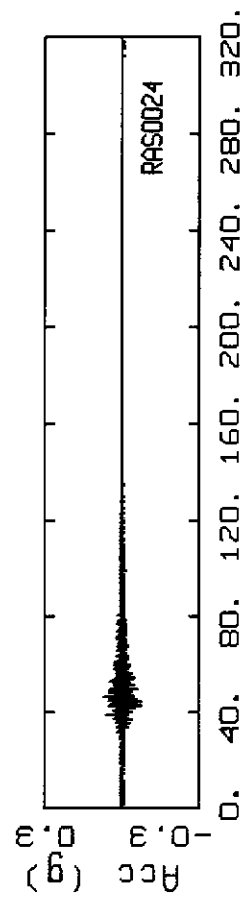
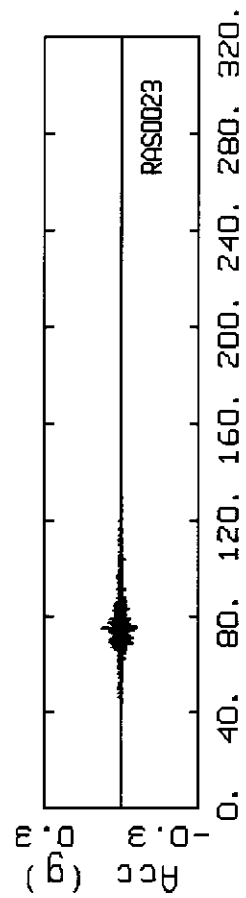
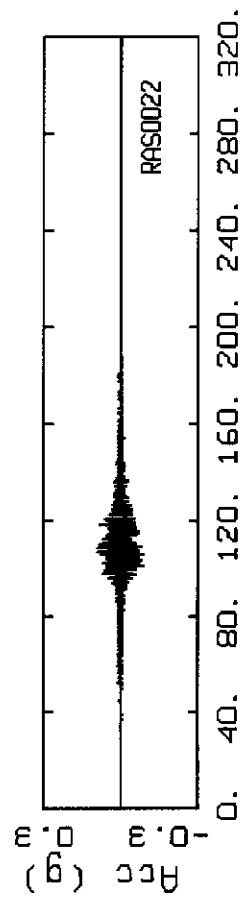
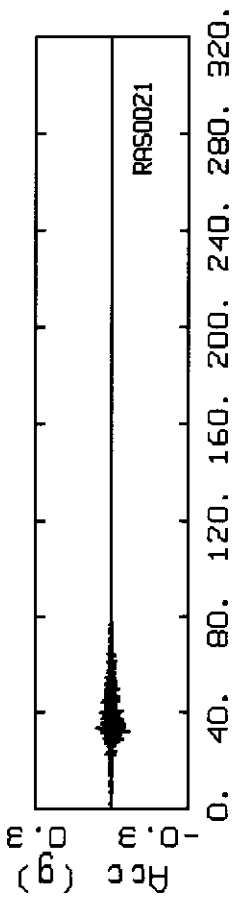
- 5 %, RESPONSE SPECTRA, RAS0026
- 5 %, RESPONSE SPECTRA, RAS0027
- - - - 5 %, RESPONSE SPECTRA, RAS0028
- - - - 5 %, RESPONSE SPECTRA, RAS0029
- • - • 5 %, RESPONSE SPECTRA, RAS0030



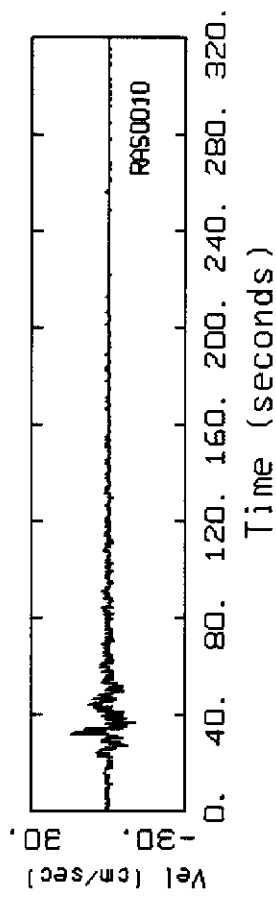
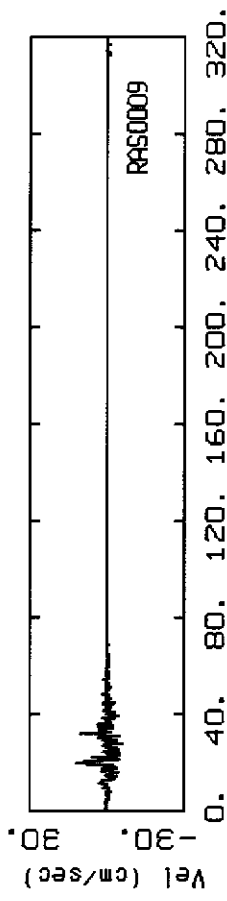
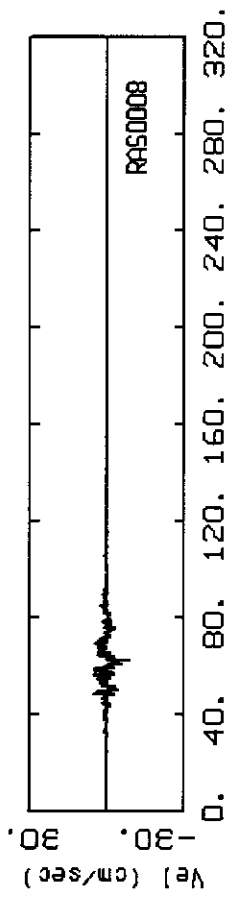
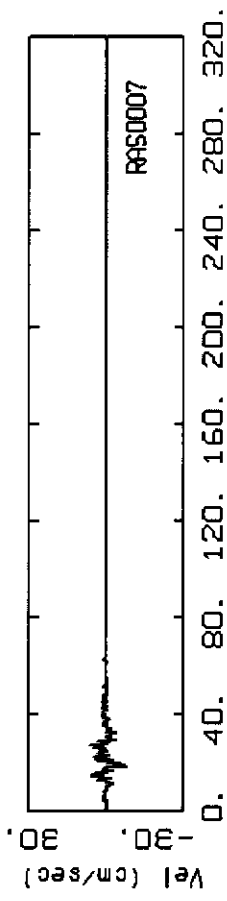
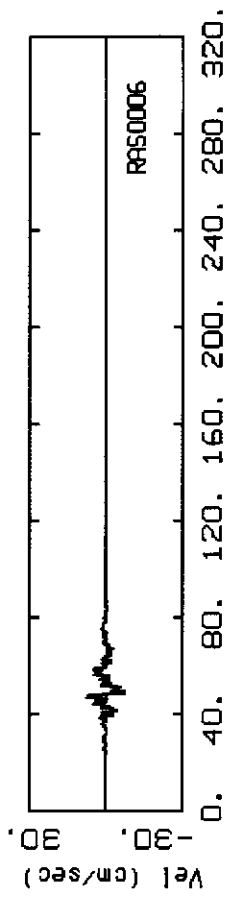
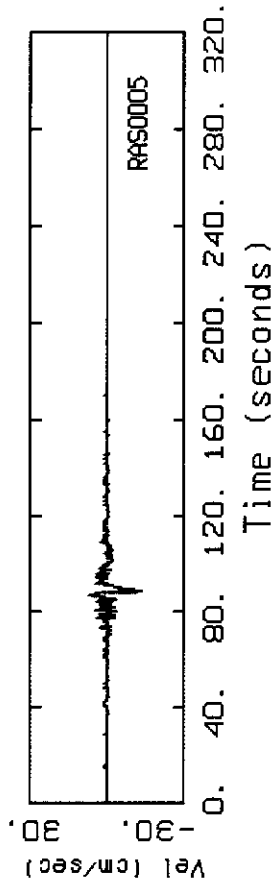
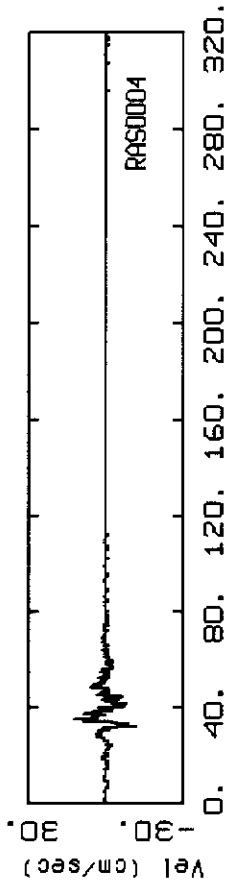
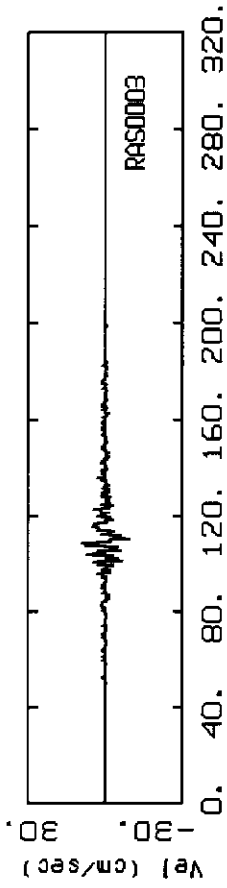
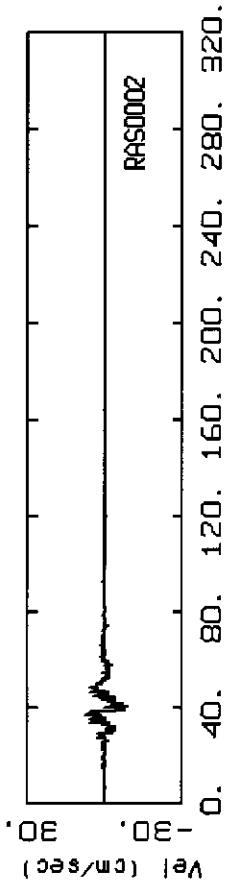
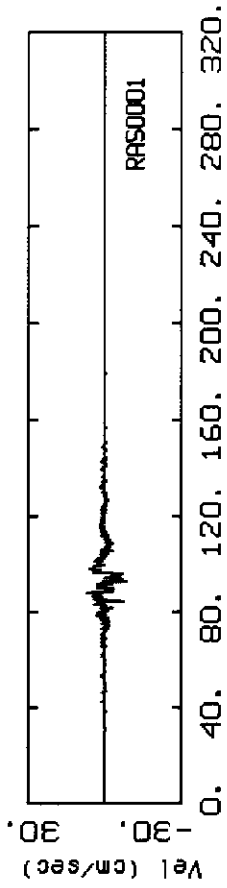
SAN ANDREAS, M=7.9 AT TREASURE ISLAND ROCK SURFACE



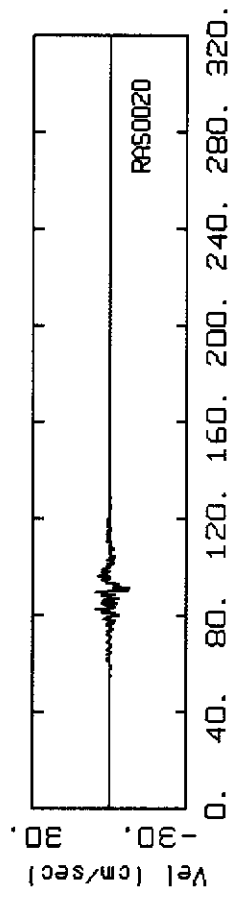
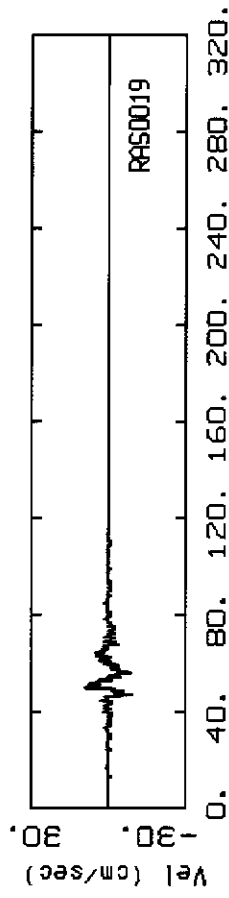
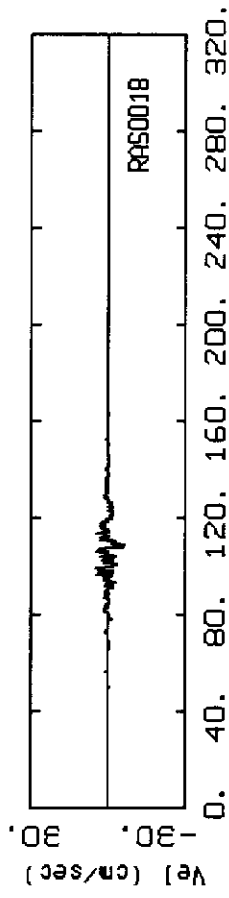
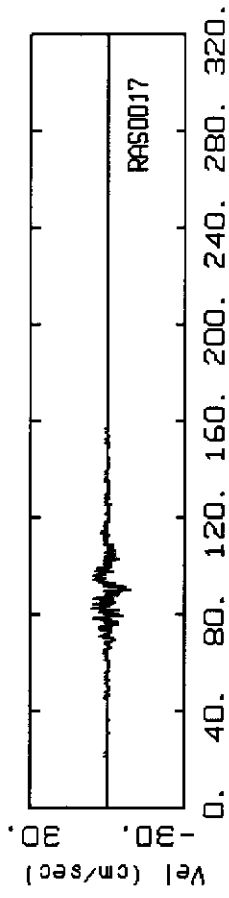
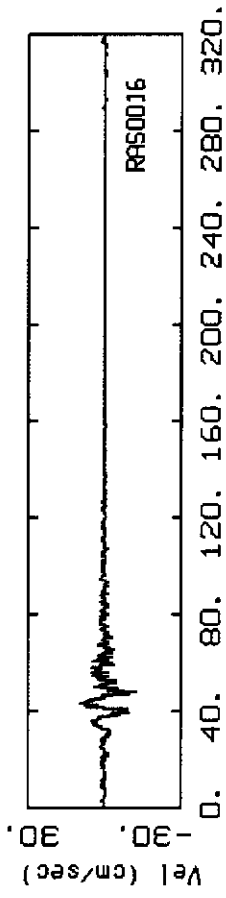
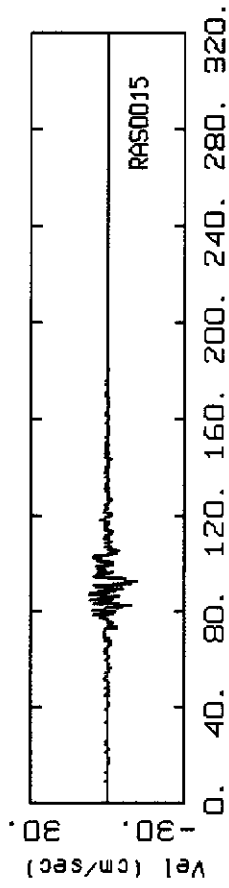
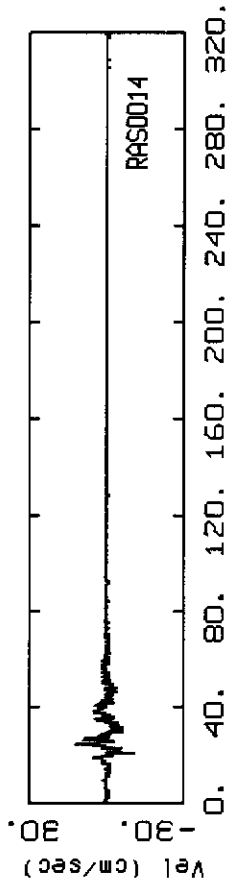
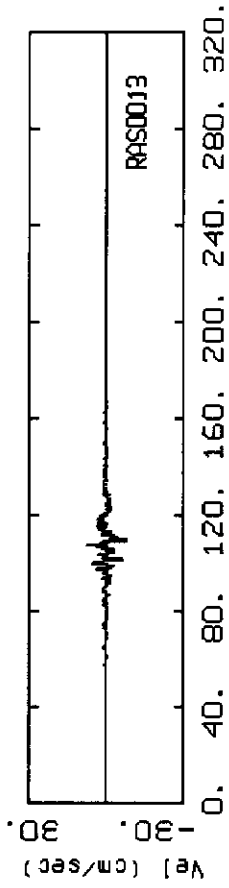
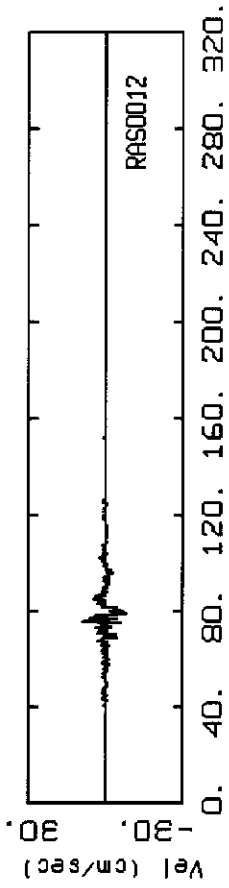
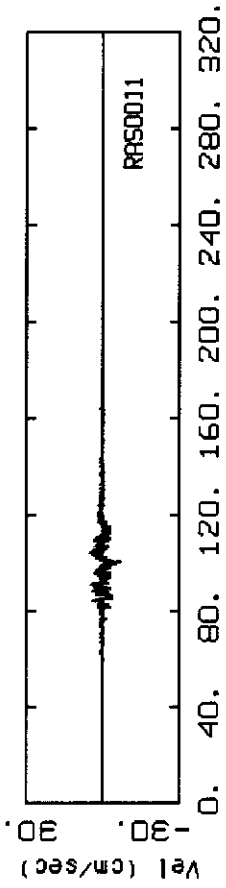
SAN ANDREAS, M=7.9 AT TREASURE ISLAND ROCK SURFACE



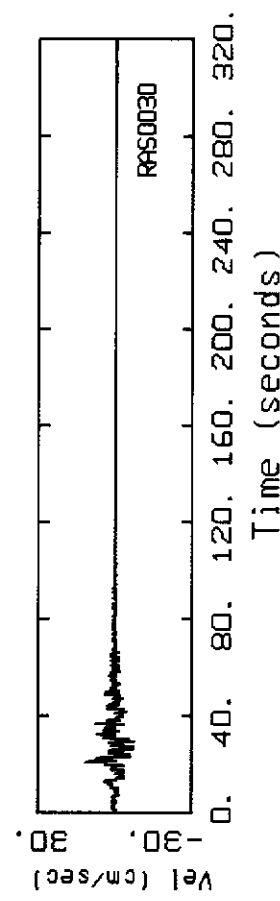
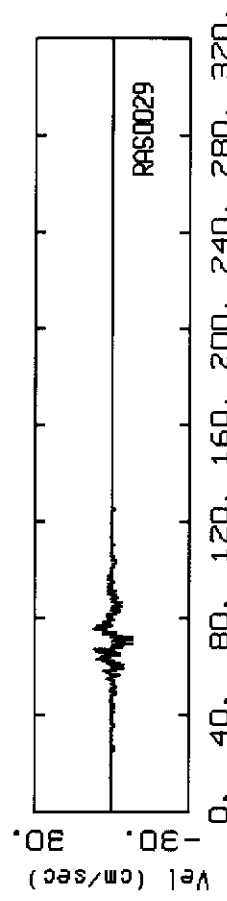
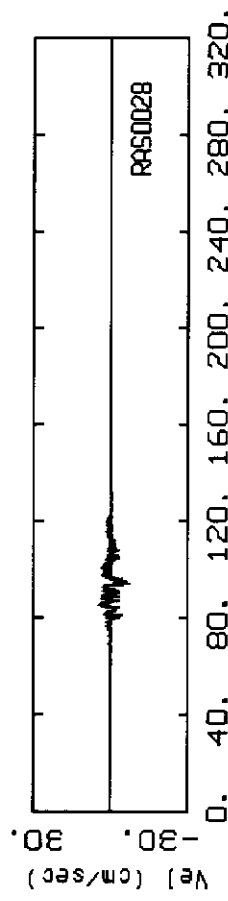
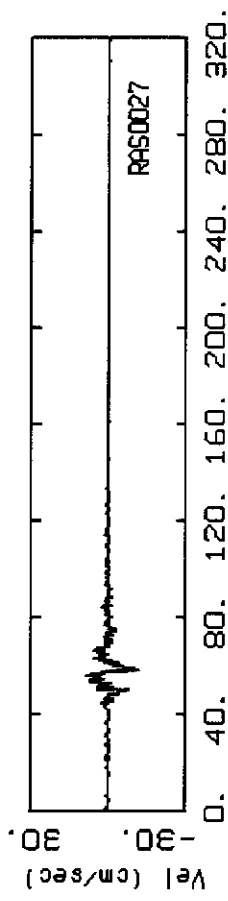
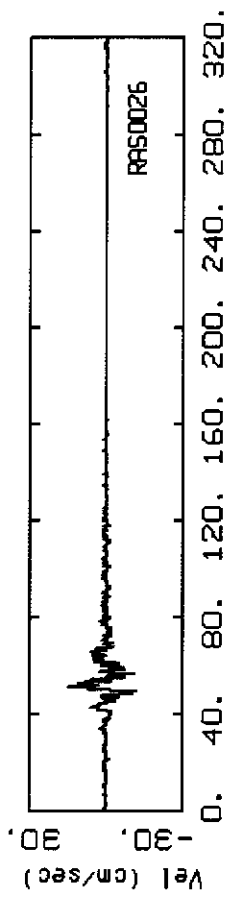
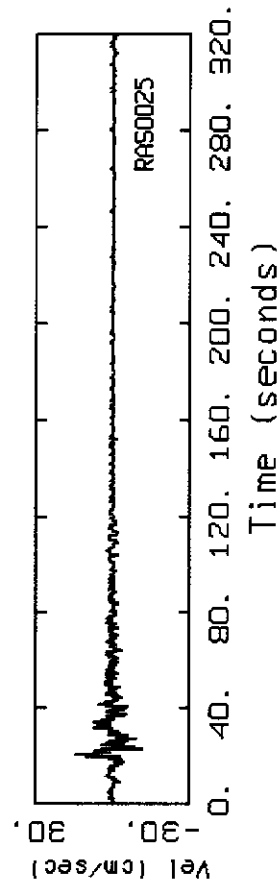
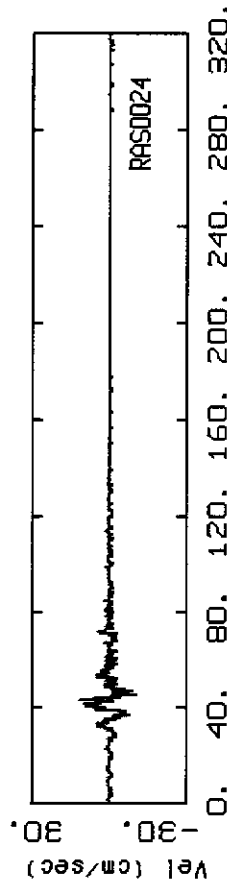
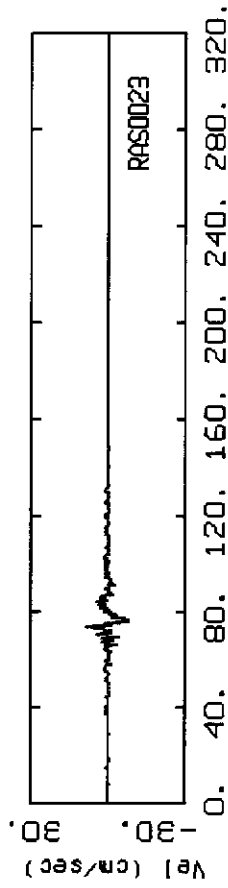
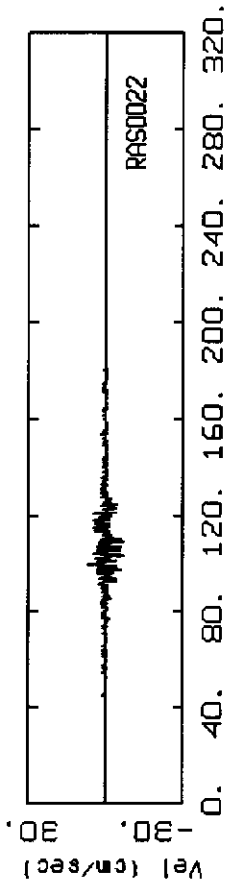
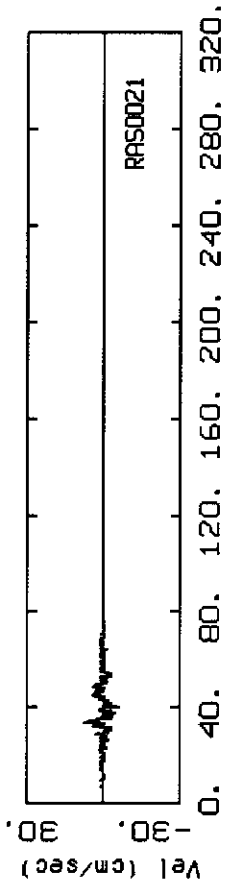
SAN ANDREAS, M=7.9 AT TREASURE ISLAND ROCK SURFACE



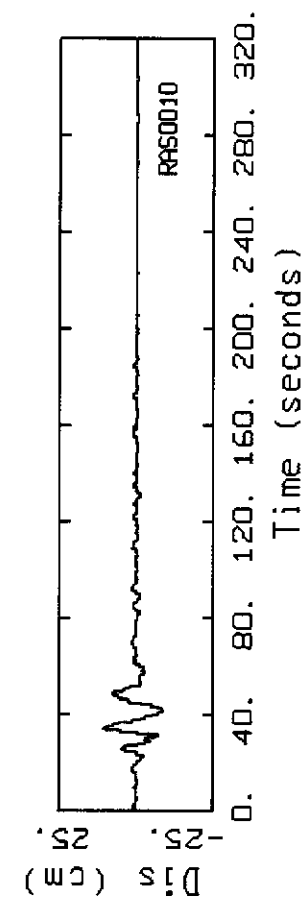
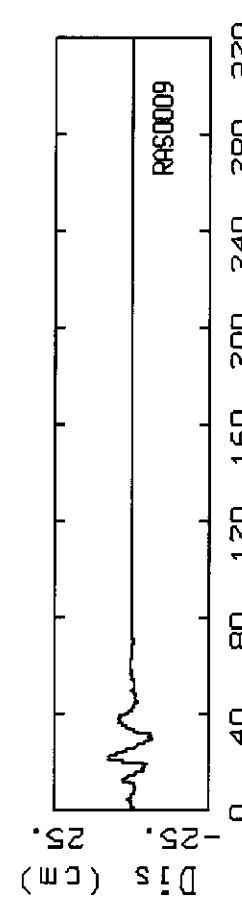
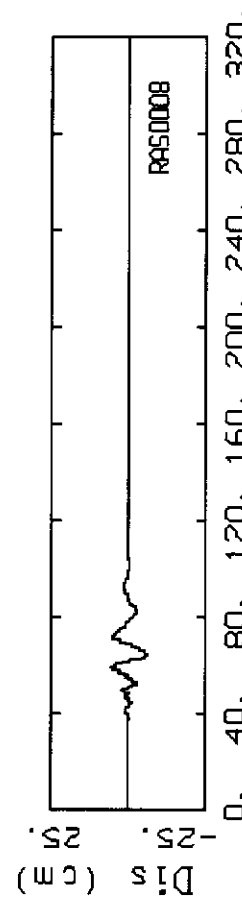
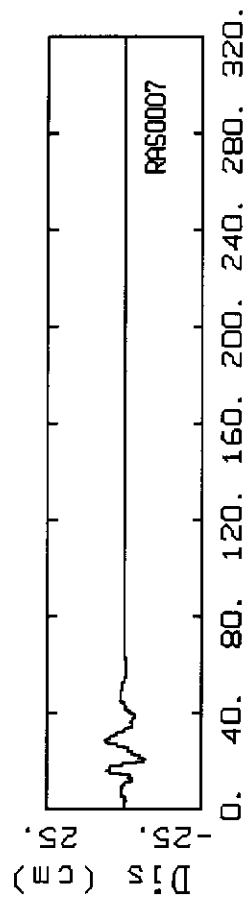
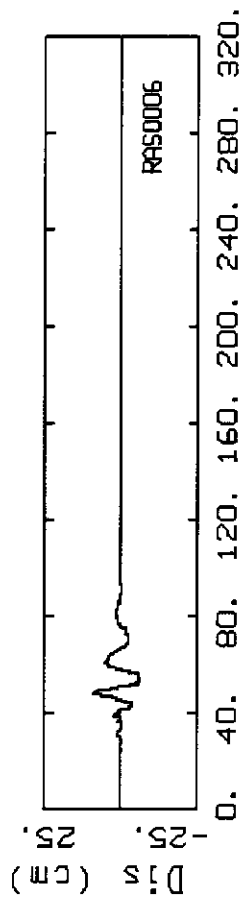
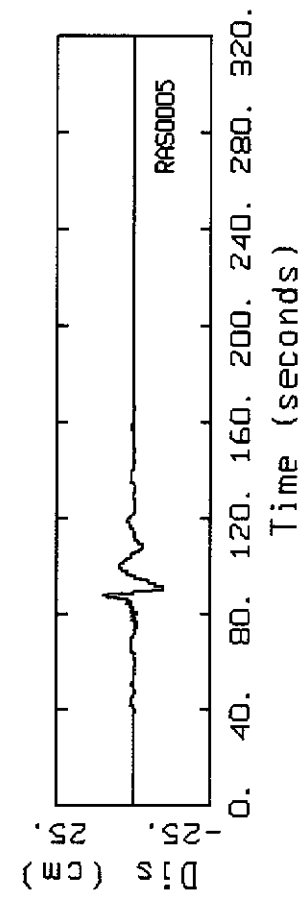
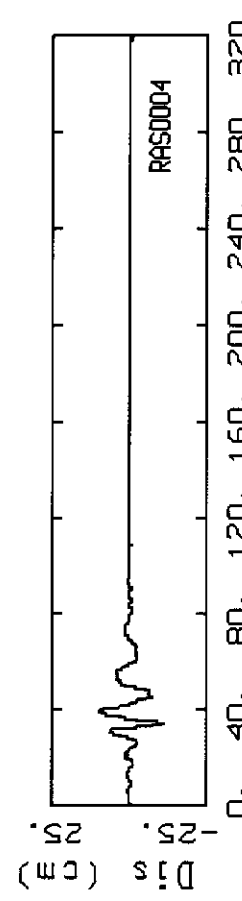
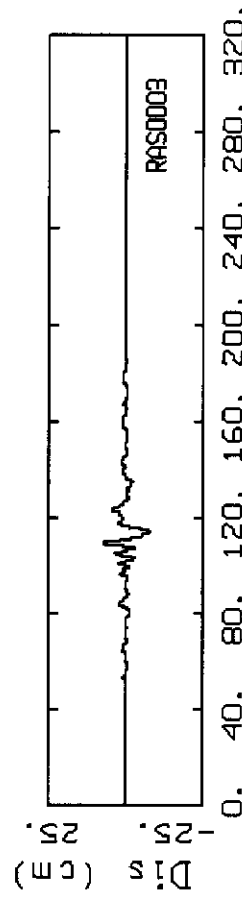
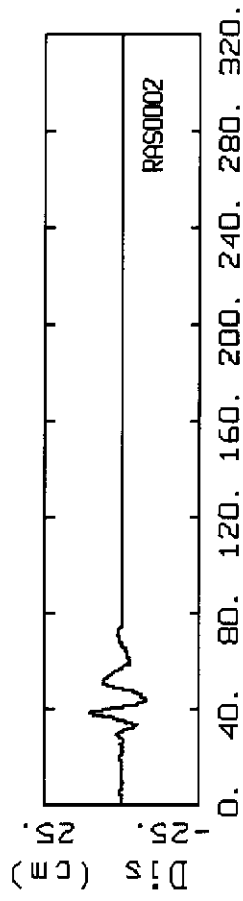
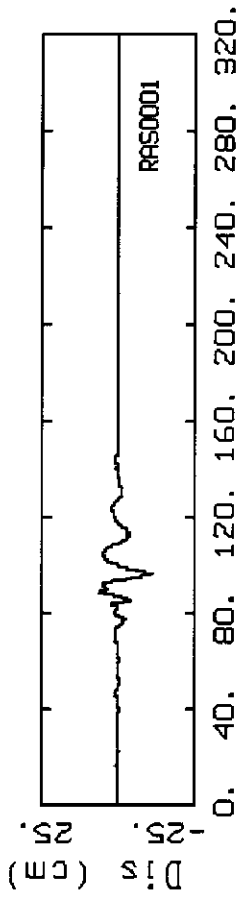
SAN ANDREAS, M=7.9 AT TREASURE ISLAND ROCK SURFACE



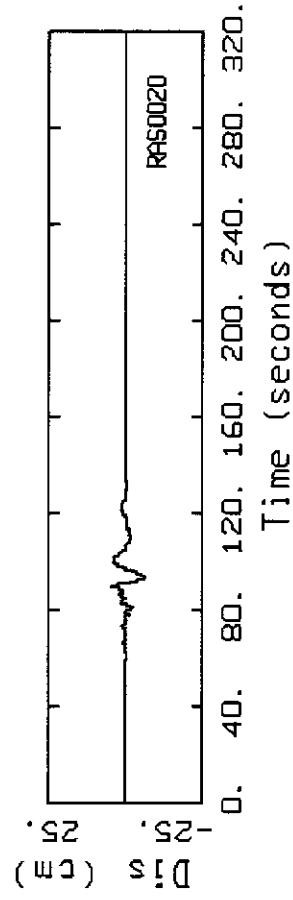
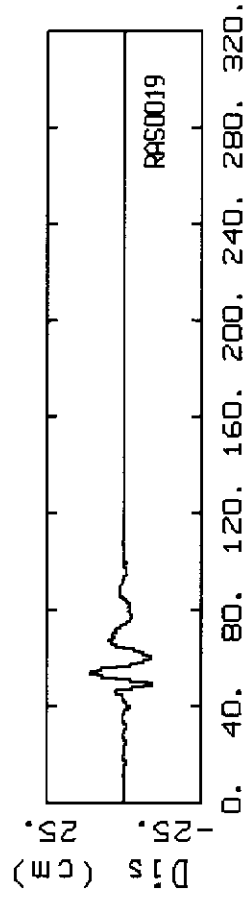
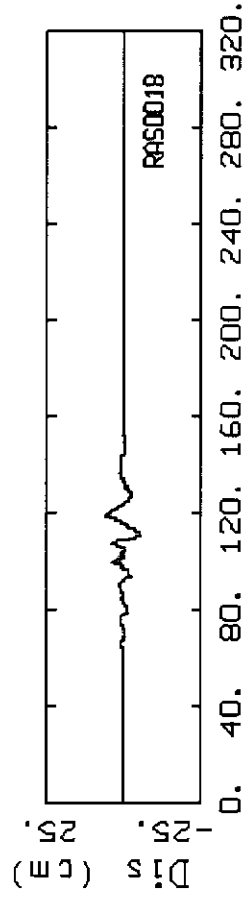
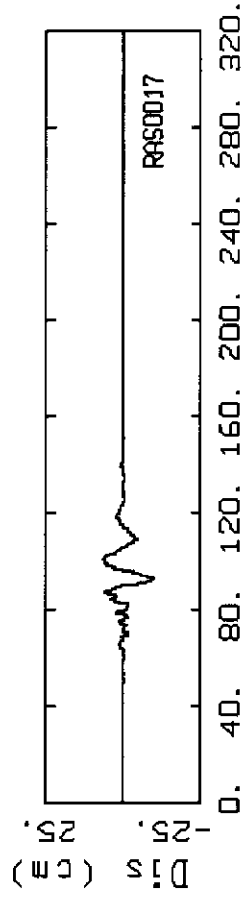
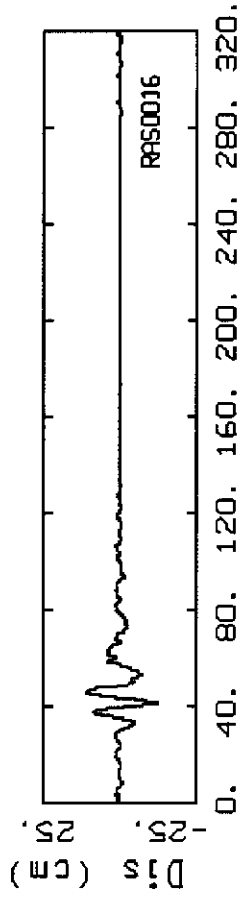
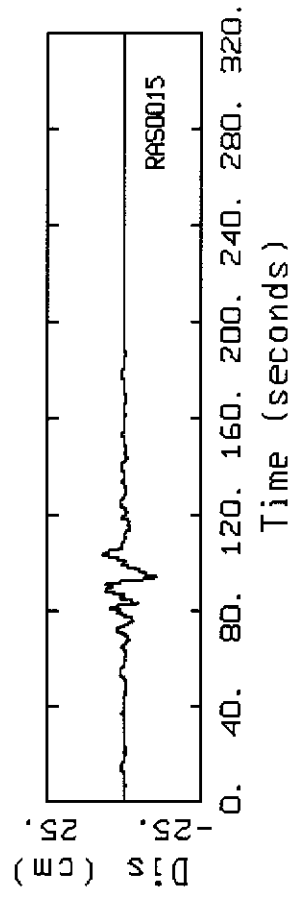
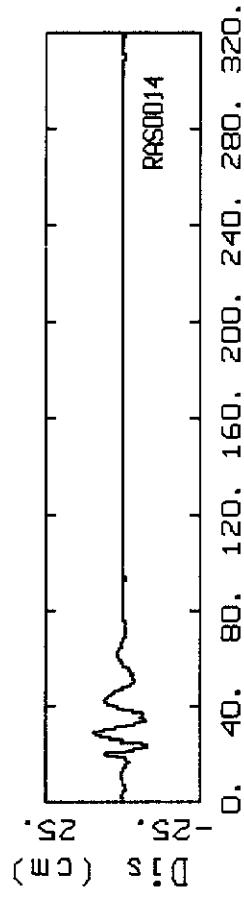
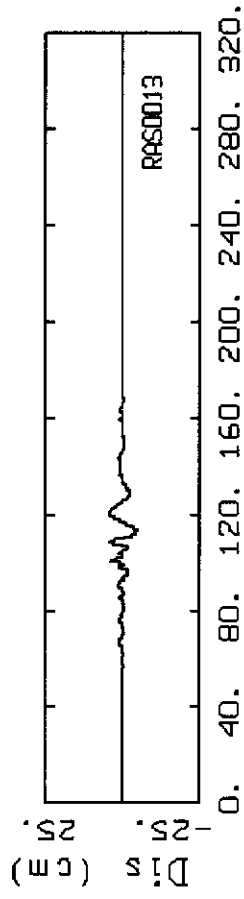
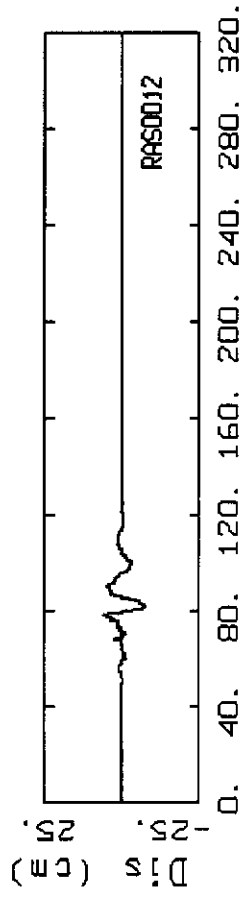
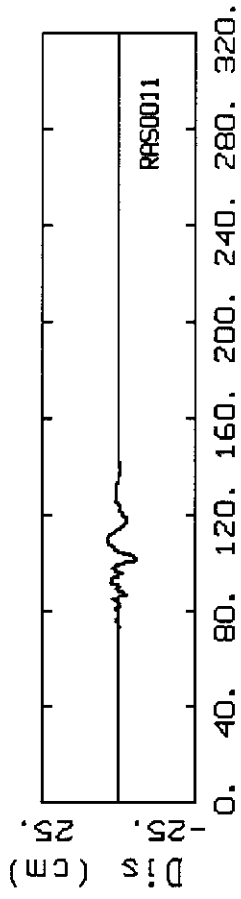
SAN ANDREAS, M=7.9 AT TREASURE ISLAND ROCK SURFACE



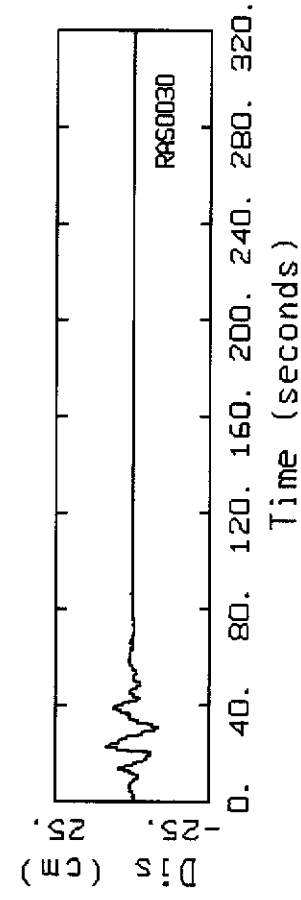
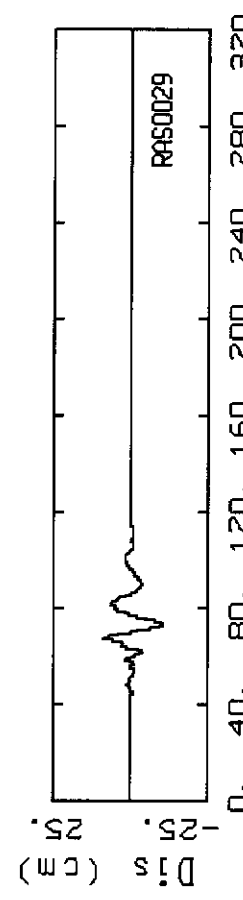
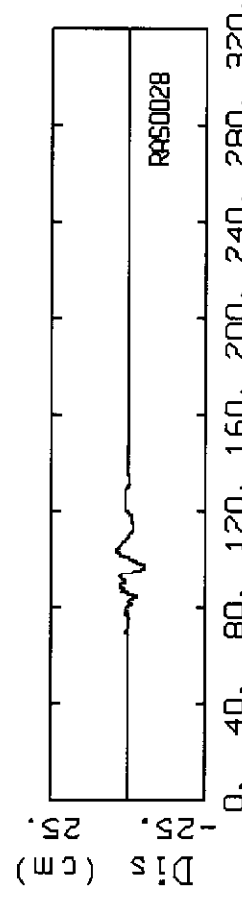
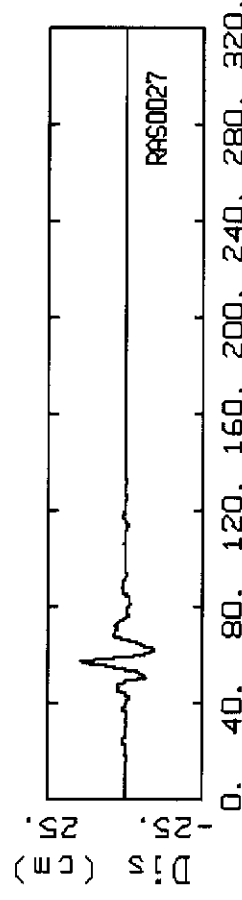
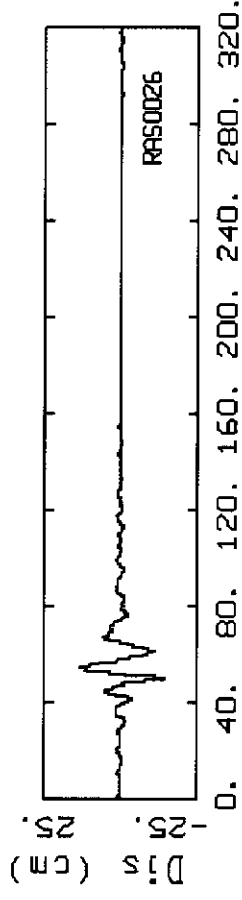
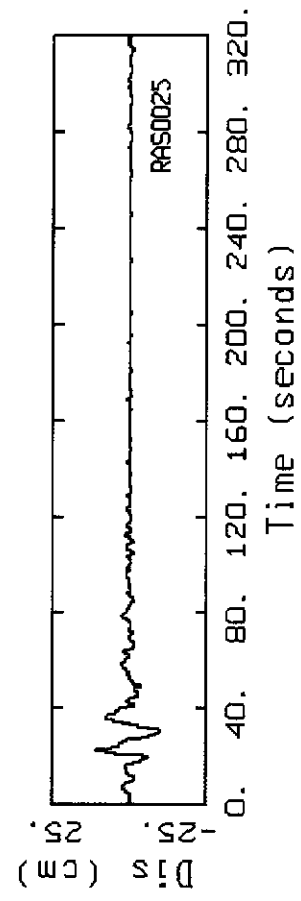
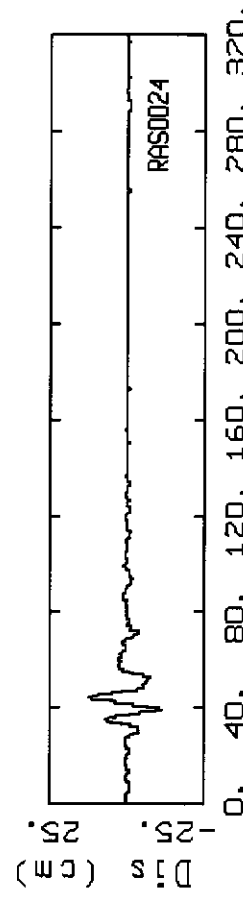
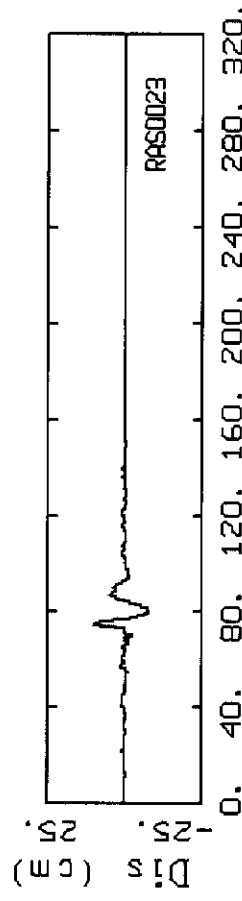
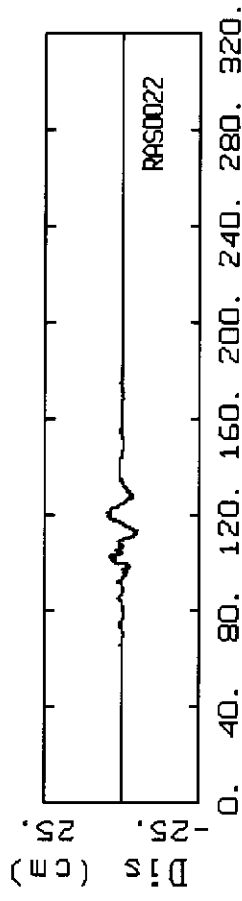
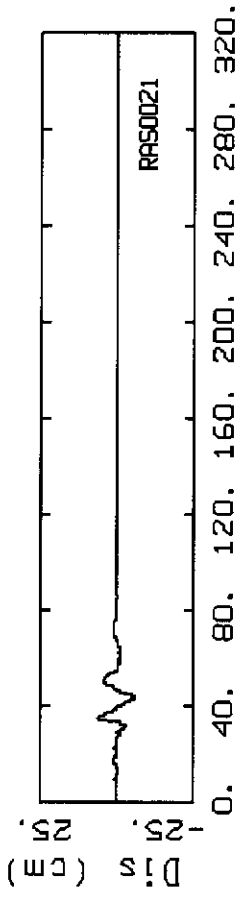
SAN ANDREAS, M=7.9 AT TREASURE ISLAND ROCK SURFACE



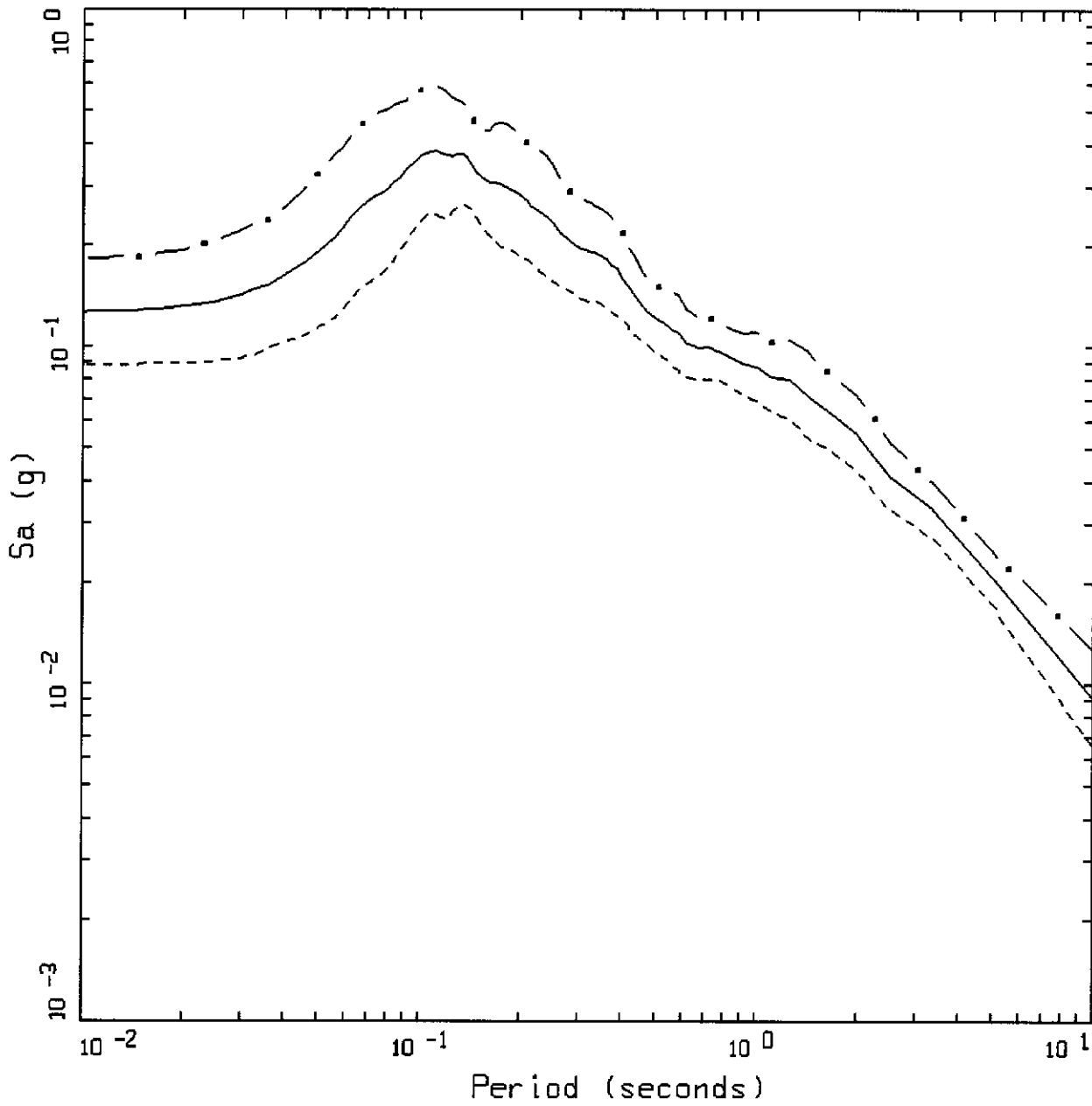
SAN ANDREAS, M=7.9 AT TREASURE ISLAND ROCK SURFACE



SAN ANDREAS, M=7.9 AT TREASURE ISLAND ROCK SURFACE

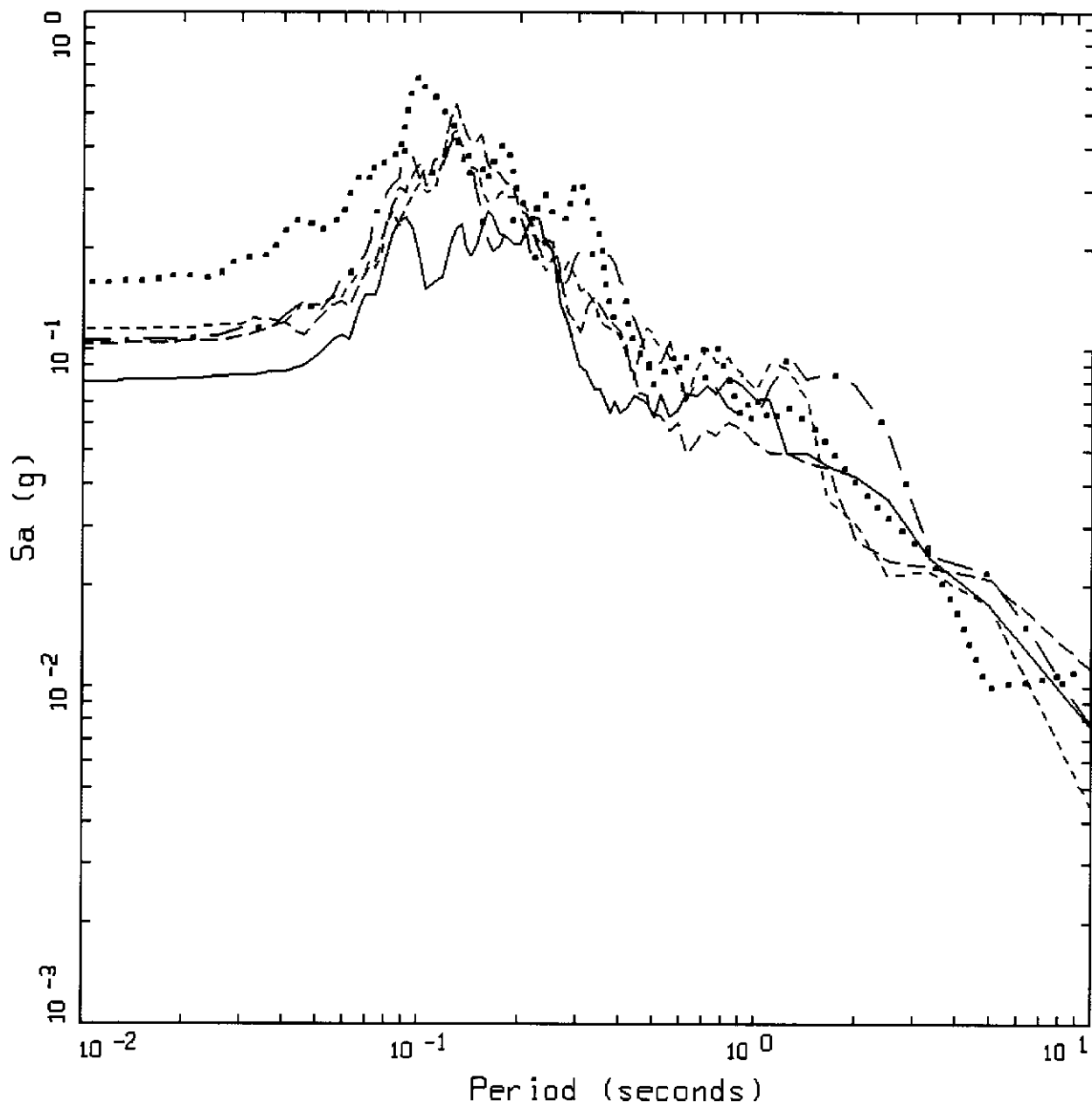


SAN ANDREAS, M=7.9 AT TREASURE ISLAND ROCK SURFACE



TREASURE ISLAND SIMULATIONS  
 PE&A MODEL FOR YERBA BUENA ISLAND (ROCK OUTCROP AT SURFACE)

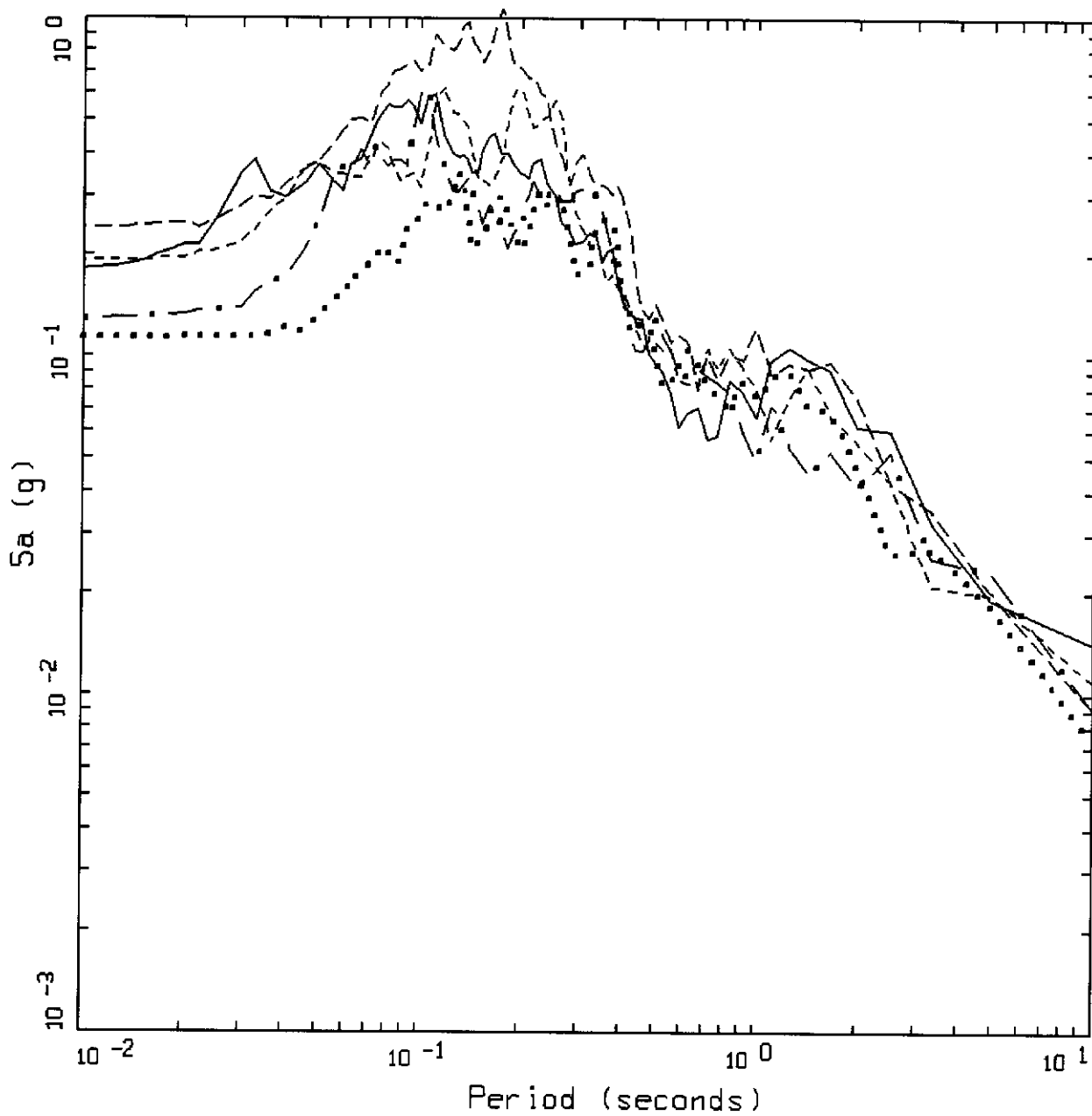
- LEGEND
- • — 84TH PERCENTILE, PGA = 0.182 G
  - 50TH PERCENTILE, PGA = 0.127 G
  - 16TH PERCENTILE, PGA = 0.088 G



SAN ANDREAS  
M = 7.9, YERBA BUENA SURFACE

LEGEND

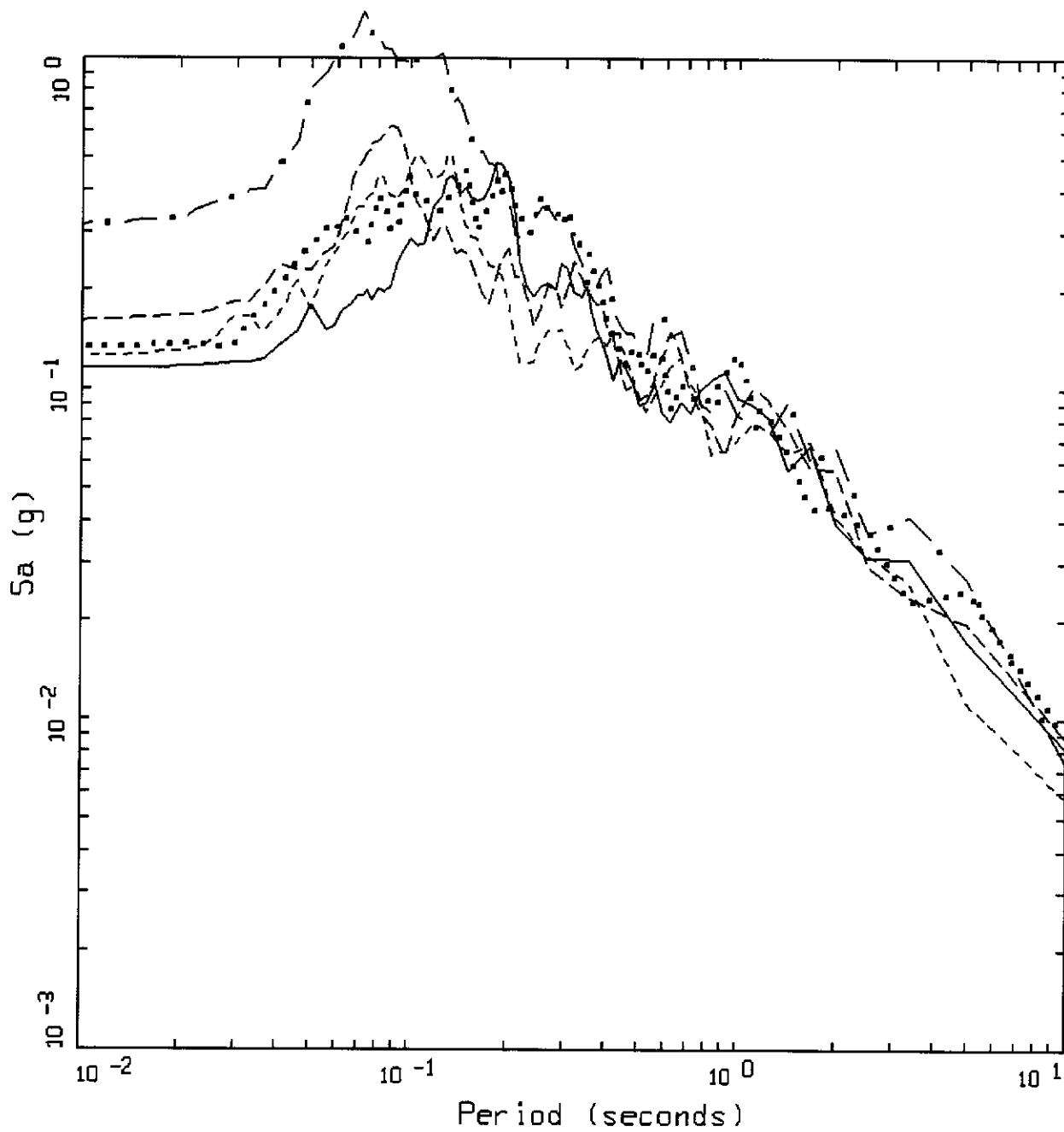
- 5 %, RESPONSE SPECTRA, RAS0001
- ..... 5 %, RESPONSE SPECTRA, RAS0002
- 5 %, RESPONSE SPECTRA, RAS0003
- 5 %, RESPONSE SPECTRA, RAS0004
- . - . 5 %, RESPONSE SPECTRA, RAS0005



SAN ANDREAS  
M = 7.9, YERBA BUENA SURFACE

LEGEND

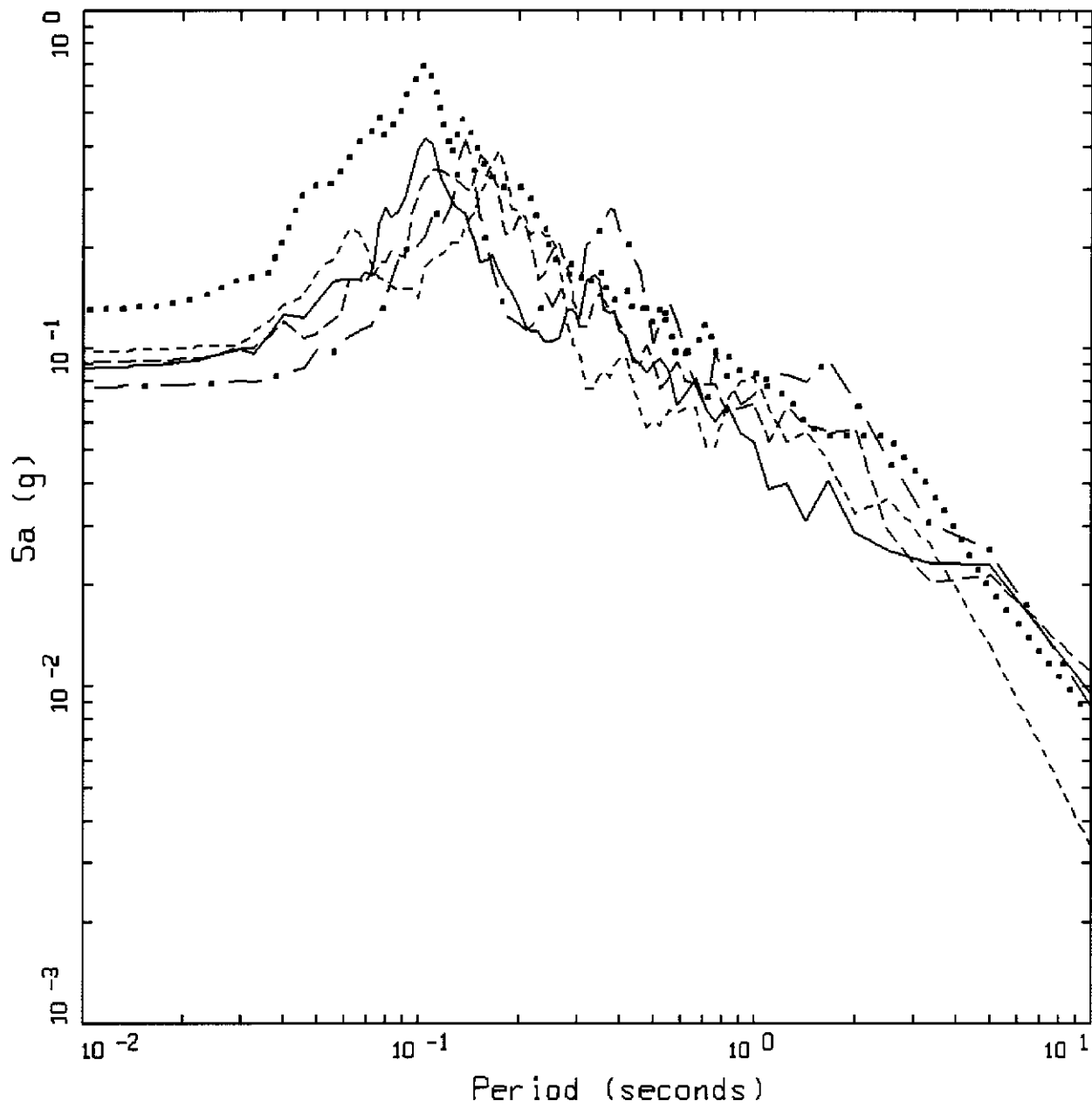
- 5 %, RESPONSE SPECTRA, RAS0006
- ..... 5 %, RESPONSE SPECTRA, RAS0007
- 5 %, RESPONSE SPECTRA, RAS0008
- 5 %, RESPONSE SPECTRA, RAS0009
- . - . 5 %, RESPONSE SPECTRA, RAS0010



SAN ANDREAS  
 M = 7.9, YERBA BUENA SURFACE

LEGEND

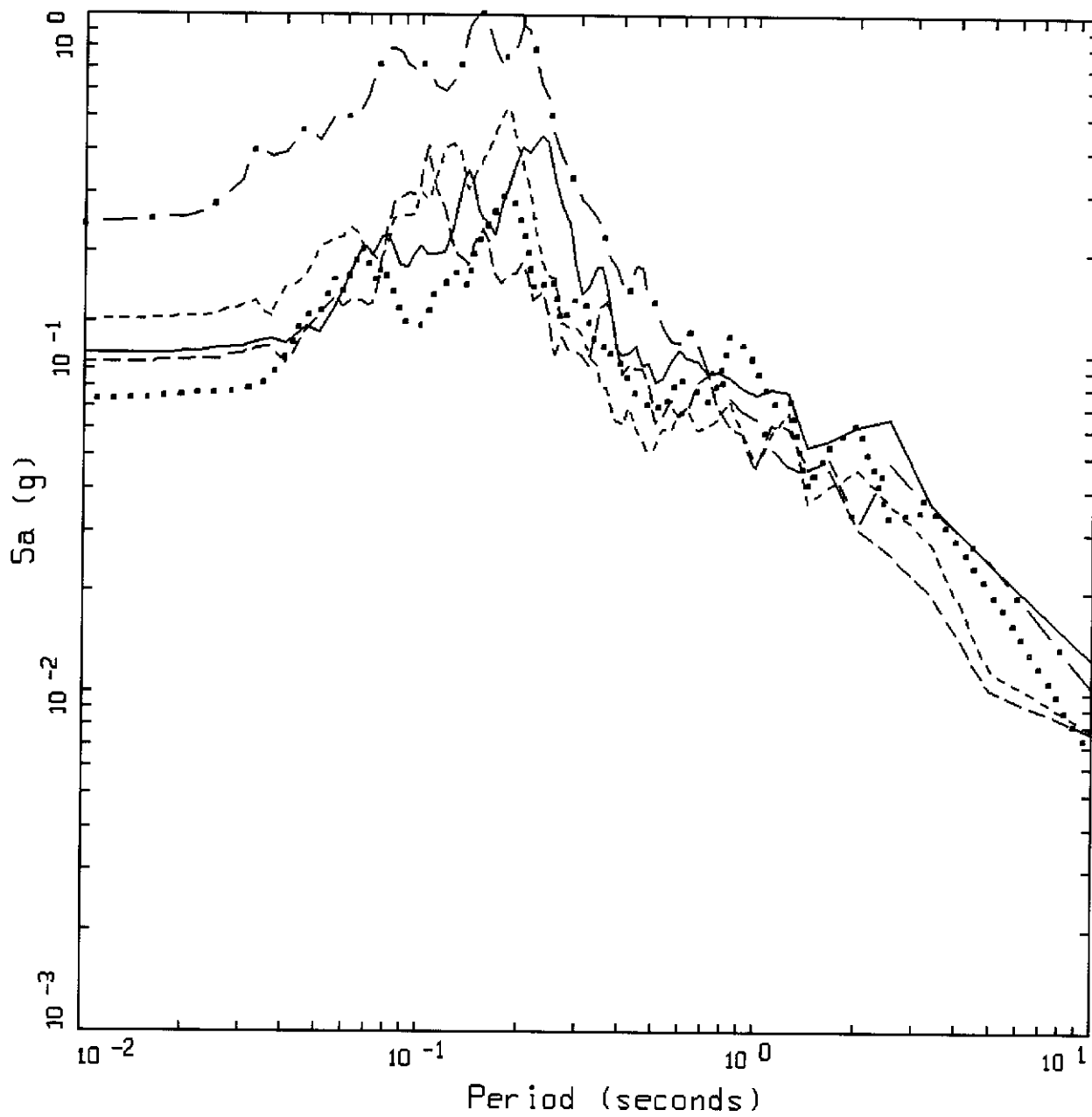
- 5 %, RESPONSE SPECTRA, RAS0011
- ..... 5 %, RESPONSE SPECTRA, RAS0012
- 5 %, RESPONSE SPECTRA, RAS0013
- 5 %, RESPONSE SPECTRA, RAS0014
- . - 5 %, RESPONSE SPECTRA, RAS0015



SAN ANDREAS  
M = 7.9, YERBA BUENA SURFACE

LEGEND

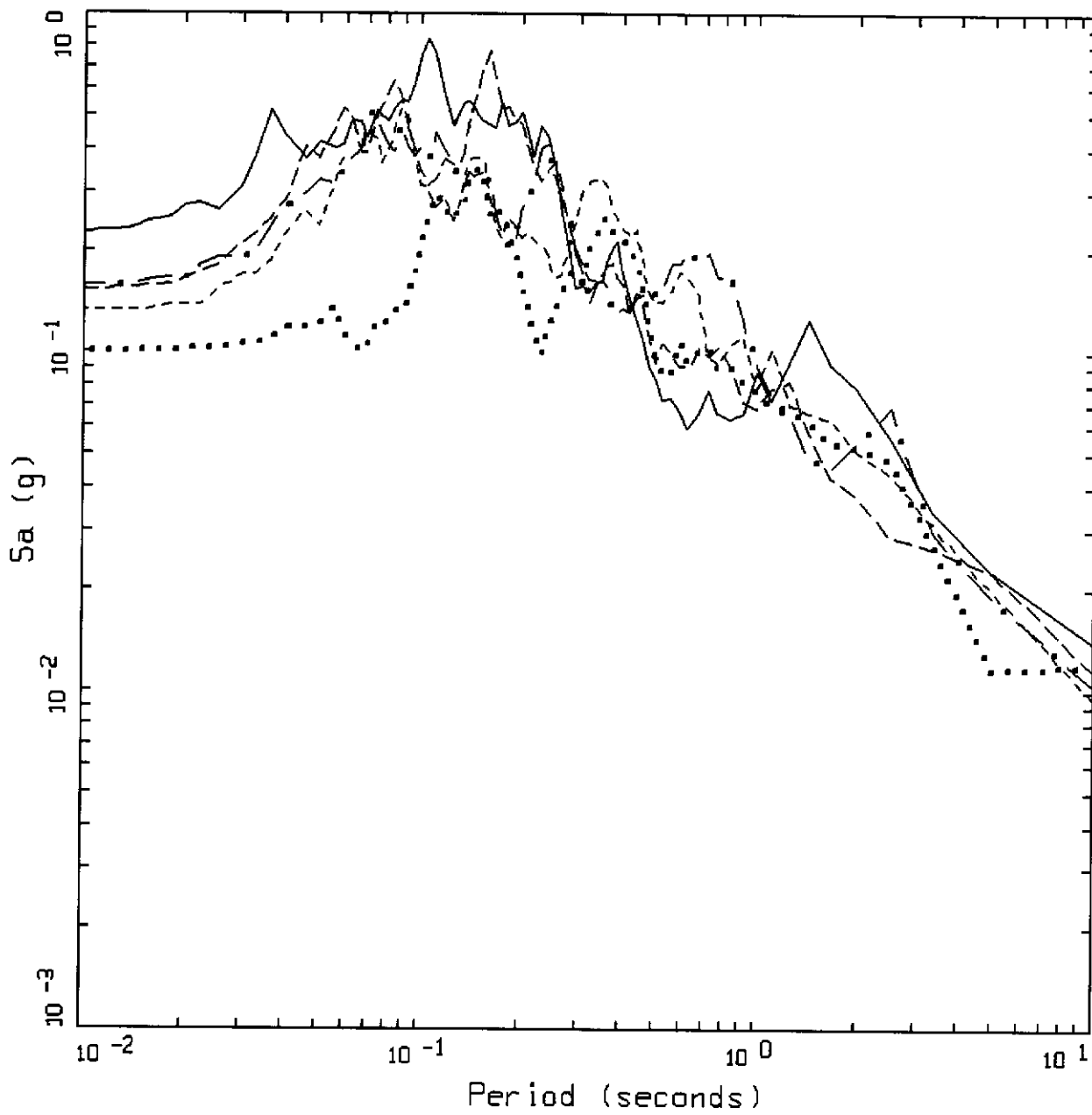
- 5 %, RESPONSE SPECTRA, RAS0016
- ..... 5 %, RESPONSE SPECTRA, RAS0017
- 5 %, RESPONSE SPECTRA, RAS0018
- - - - - 5 %, RESPONSE SPECTRA, RAS0019
- . - . - 5 %, RESPONSE SPECTRA, RAS0020



SAN ANDREAS  
 M = 7.9, YERBA BUENA SURFACE

LEGEND

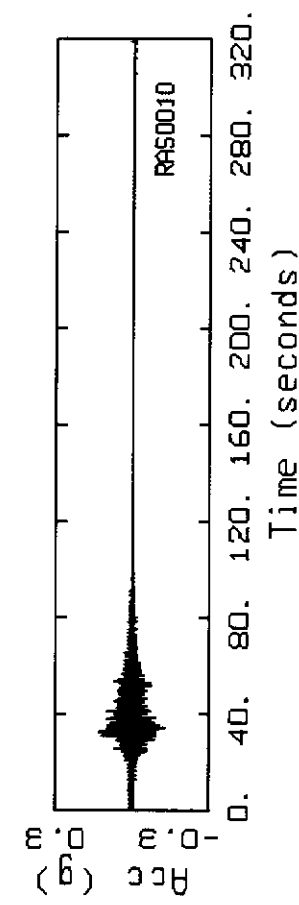
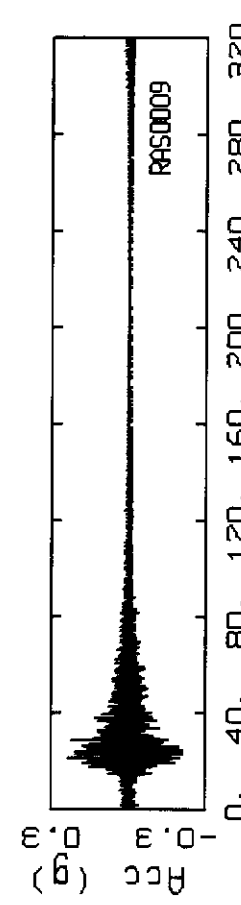
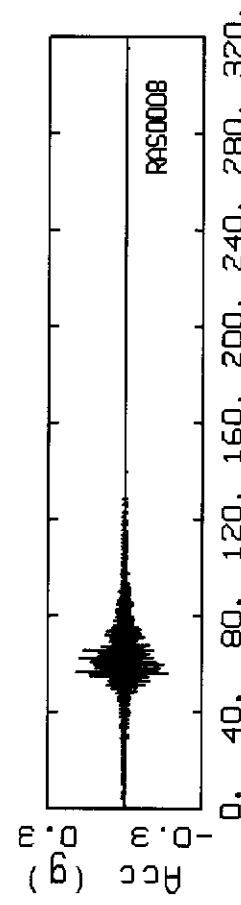
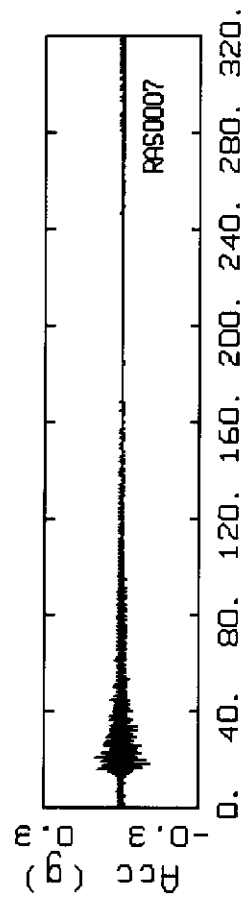
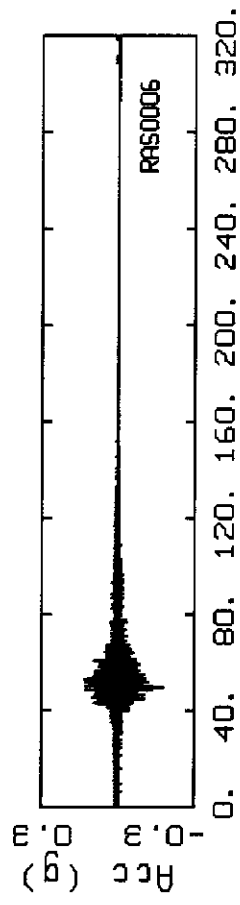
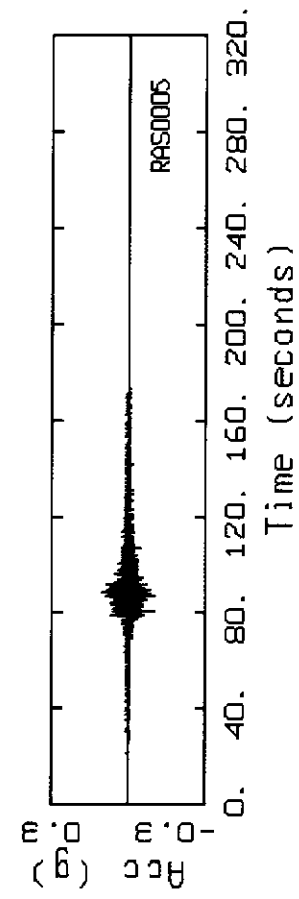
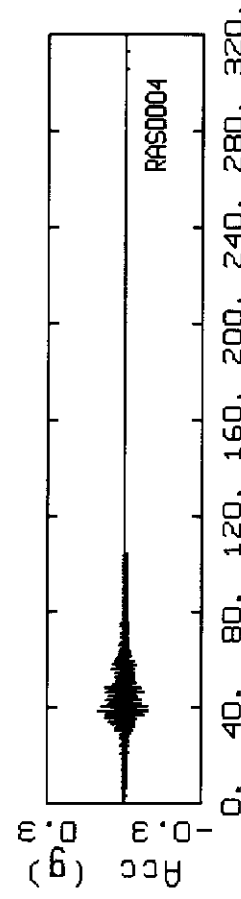
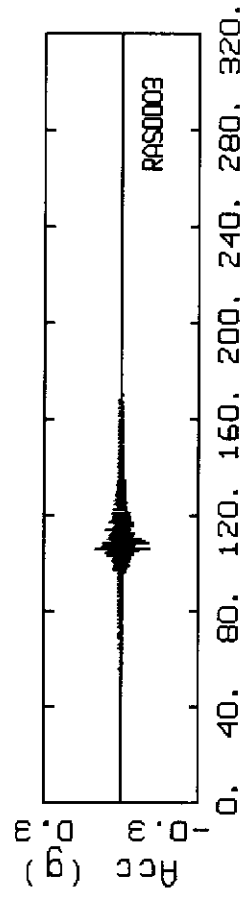
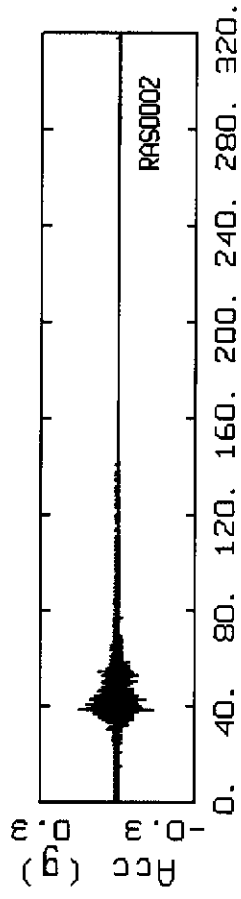
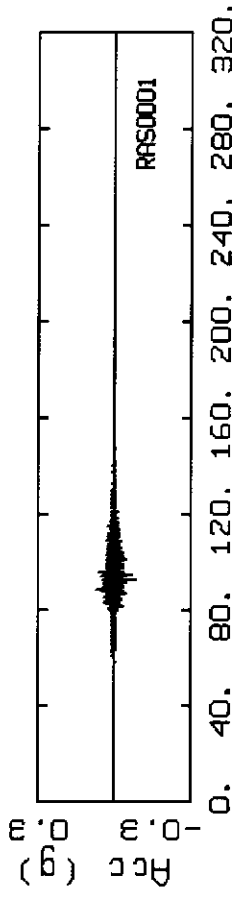
- 5 %, RESPONSE SPECTRA, RAS0021
- ..... 5 %, RESPONSE SPECTRA, RAS0022
- - - - 5 %, RESPONSE SPECTRA, RAS0023
- · - · 5 %, RESPONSE SPECTRA, RAS0024
- - - - 5 %, RESPONSE SPECTRA, RAS0025



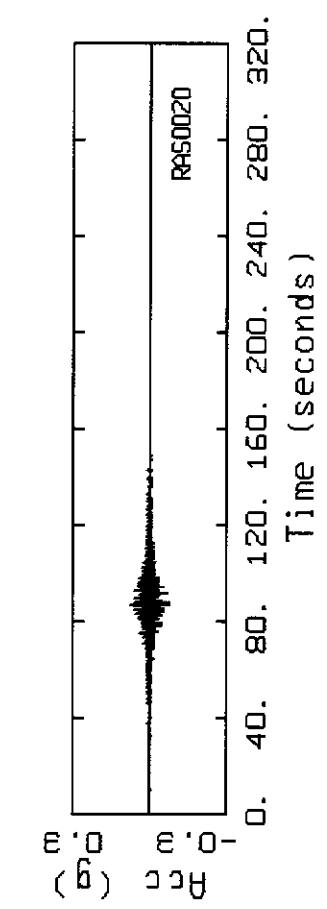
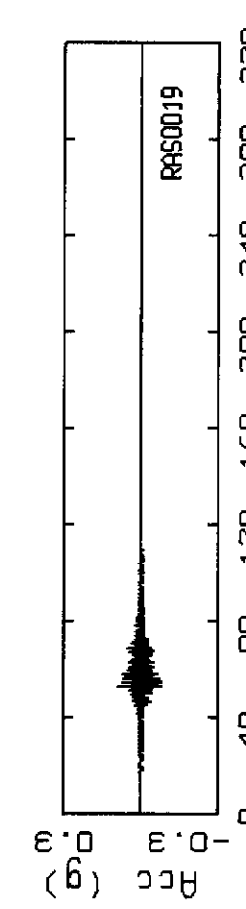
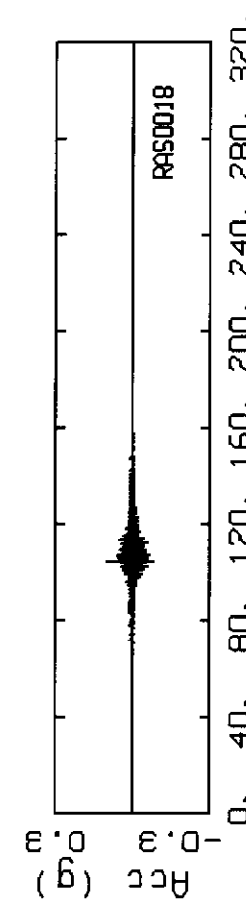
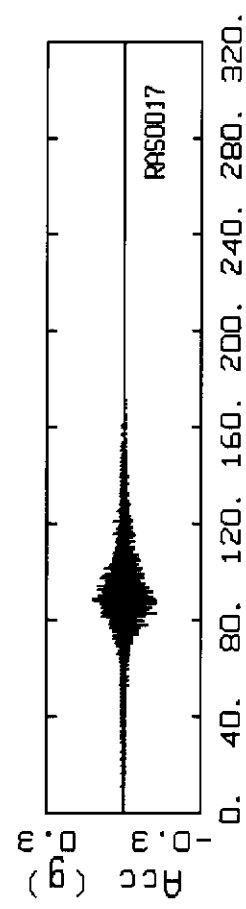
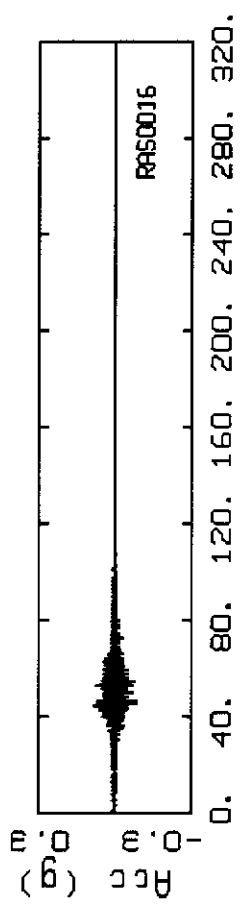
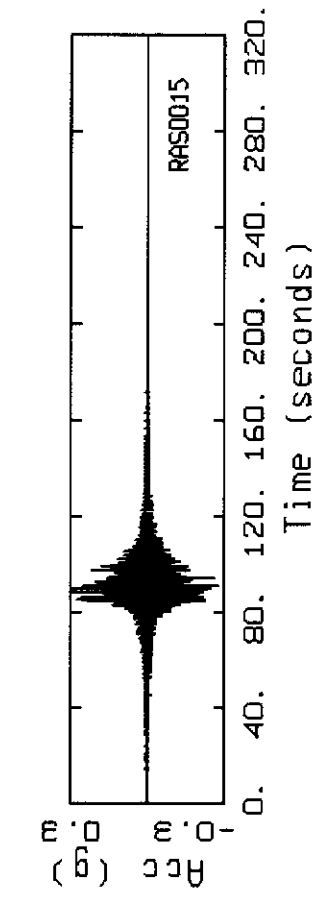
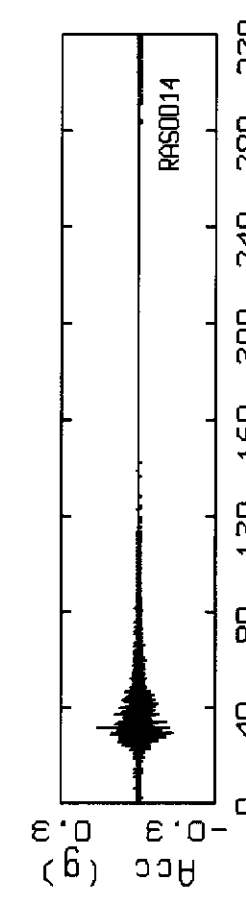
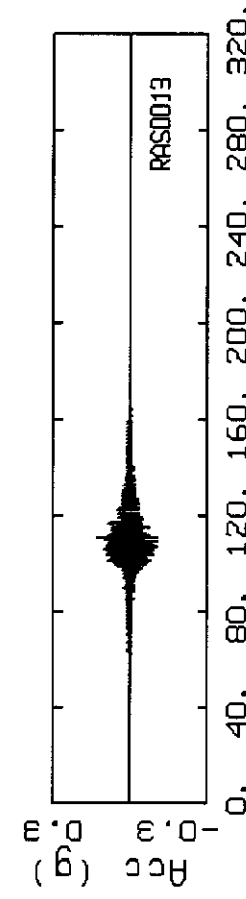
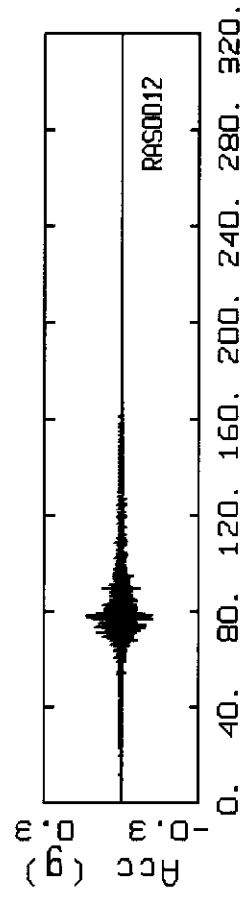
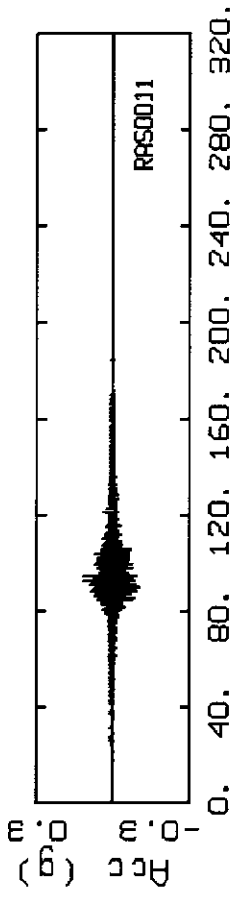
SAN ANDREAS  
M = 7.9, YERBA BUENA SURFACE

LEGEND

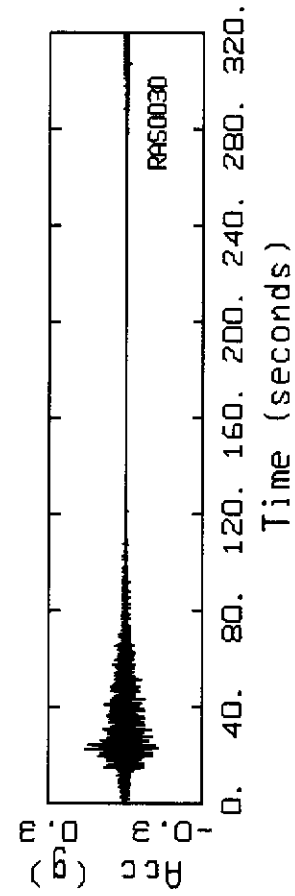
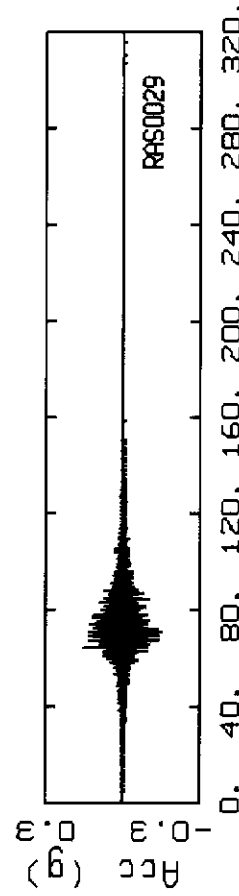
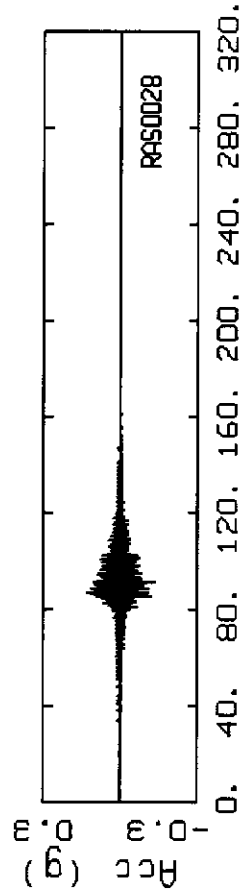
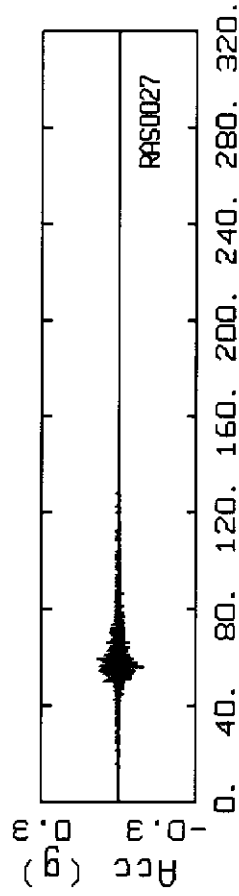
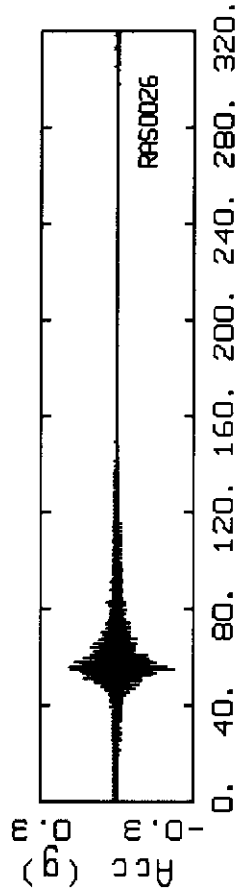
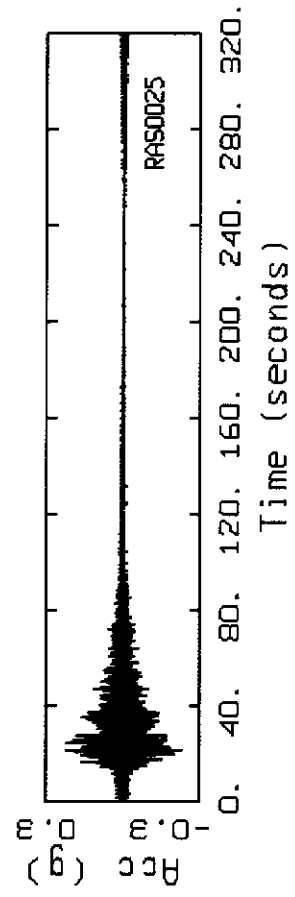
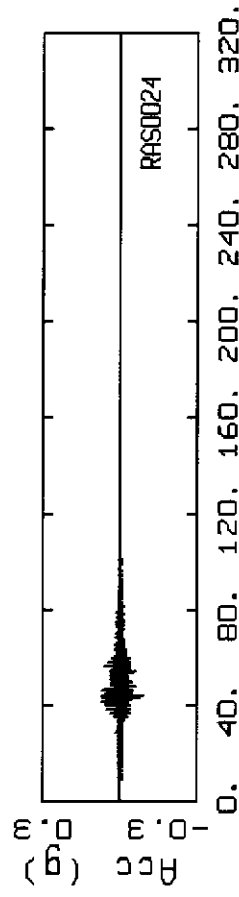
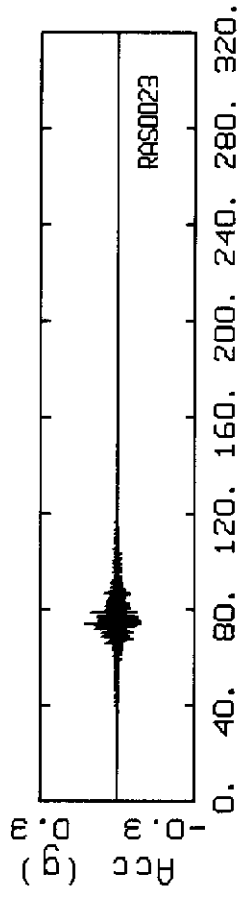
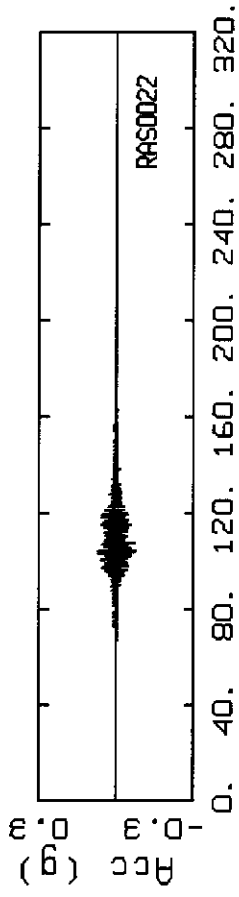
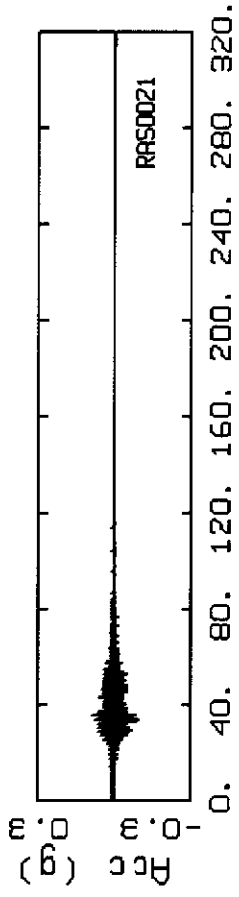
- 5 %, RESPONSE SPECTRA, RAS0026
- ..... 5 %, RESPONSE SPECTRA, RAS0027
- - - - 5 %, RESPONSE SPECTRA, RAS0028
- - - - 5 %, RESPONSE SPECTRA, RAS0029
- . - . 5 %, RESPONSE SPECTRA, RAS0030



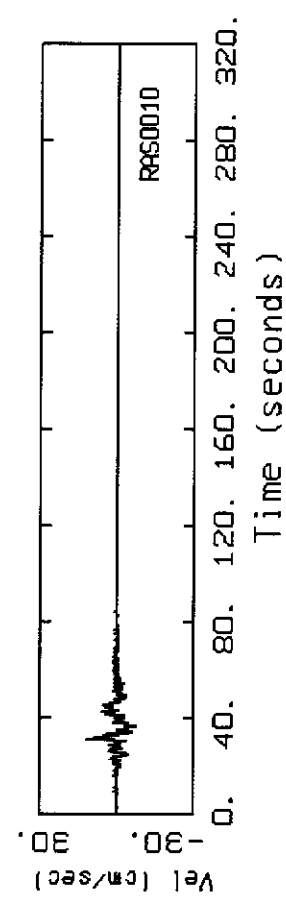
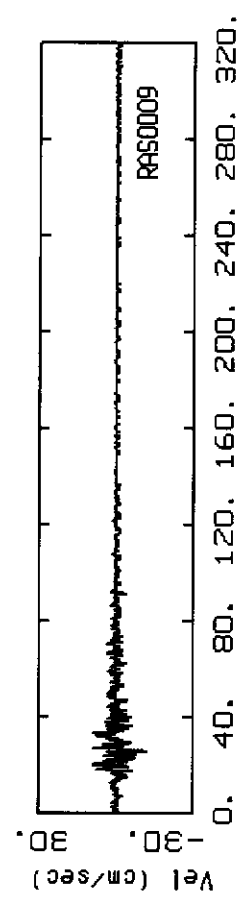
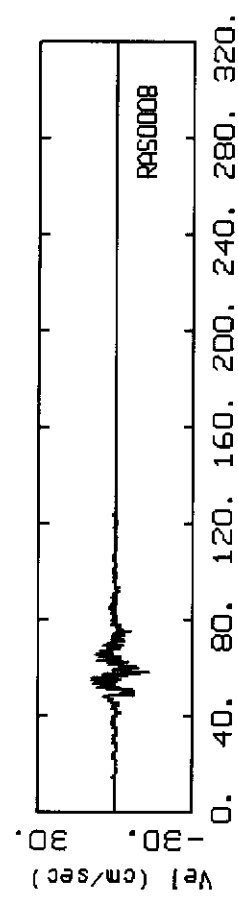
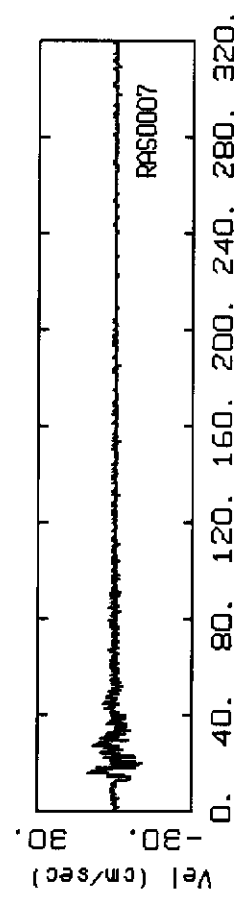
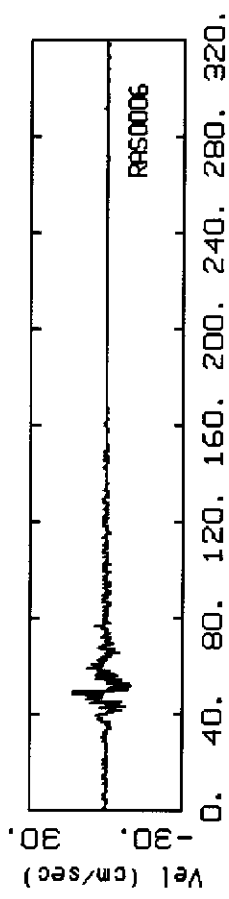
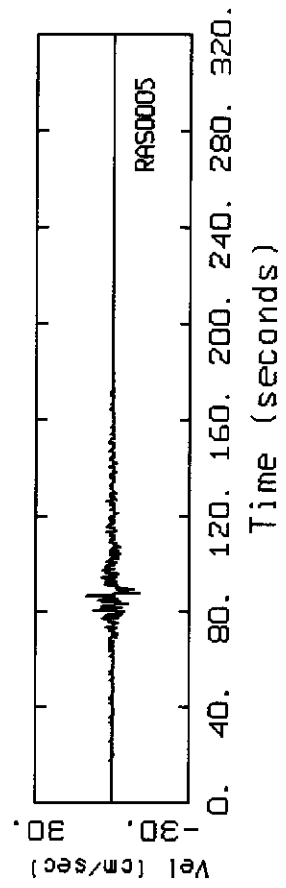
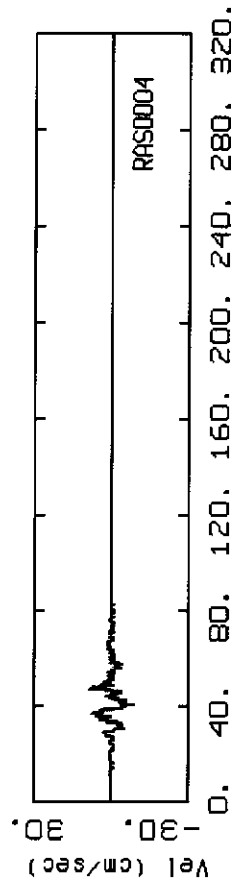
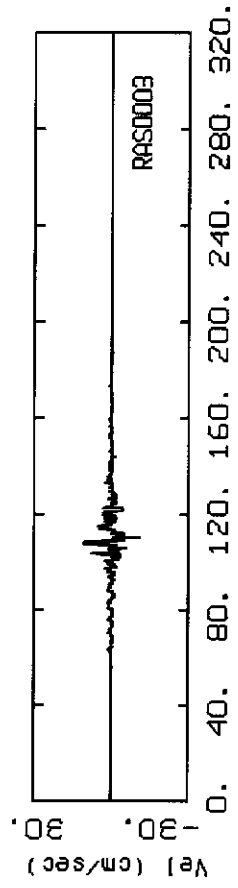
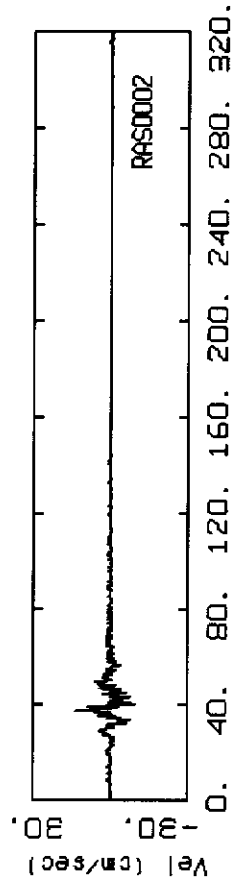
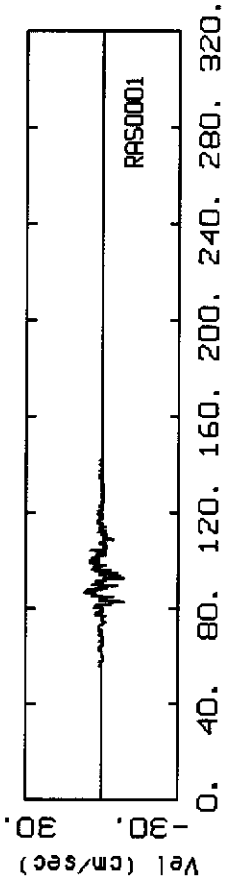
SAN ANDREAS, M=7.9 AT YERBA BUENA SURFACE



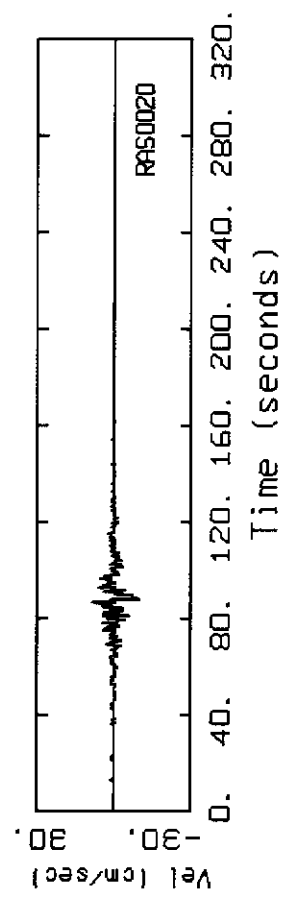
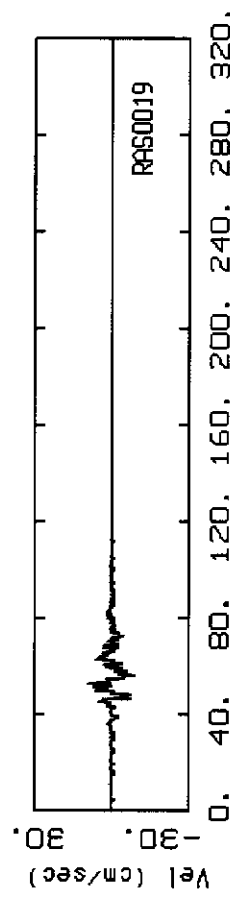
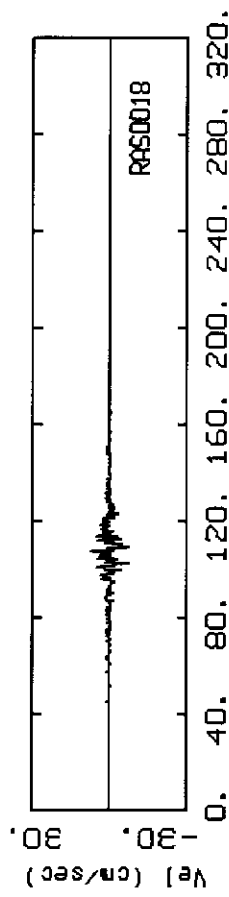
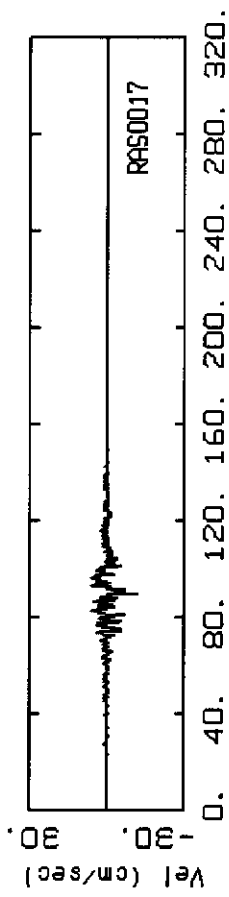
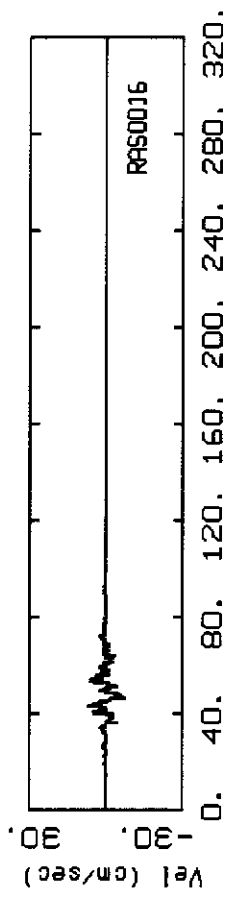
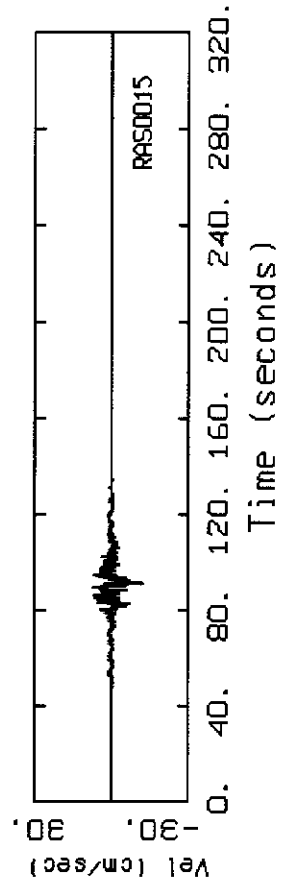
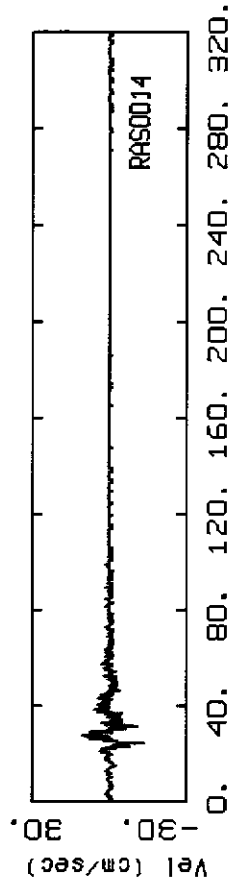
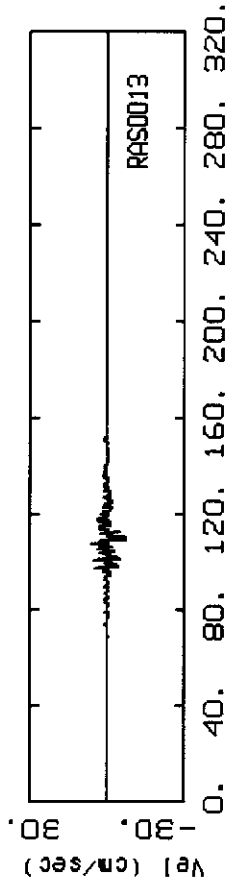
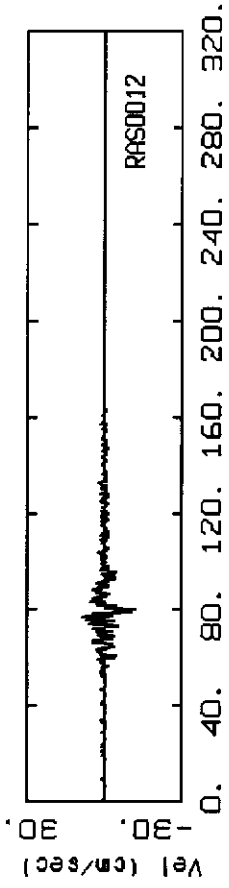
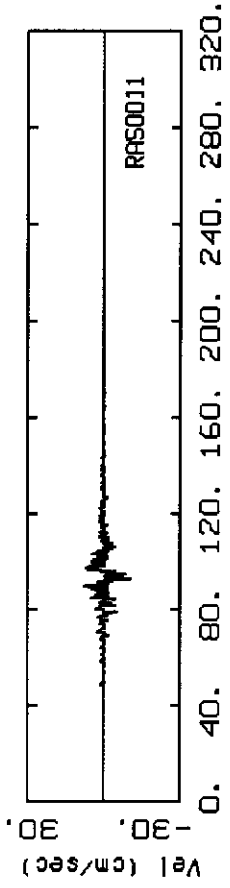
SAN ANDREAS, M=7.9 AT YERBA BUENA SURFACE



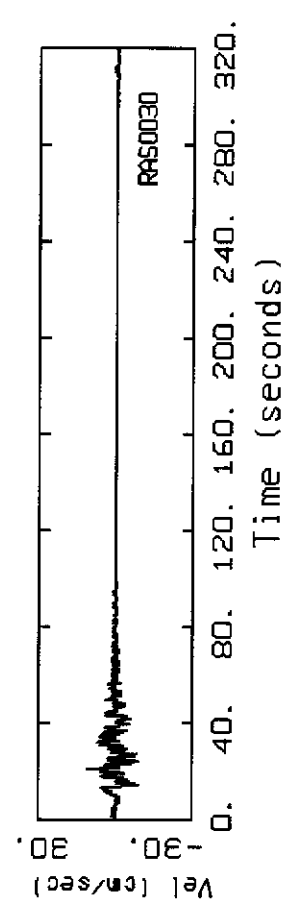
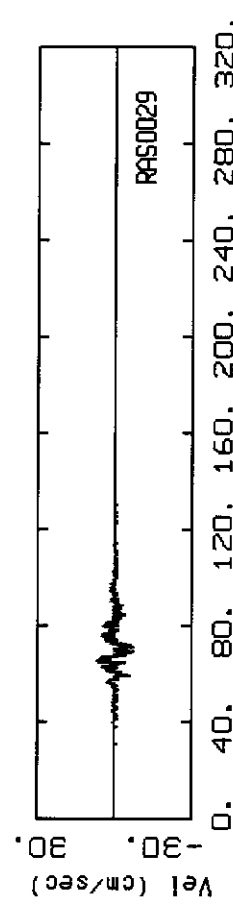
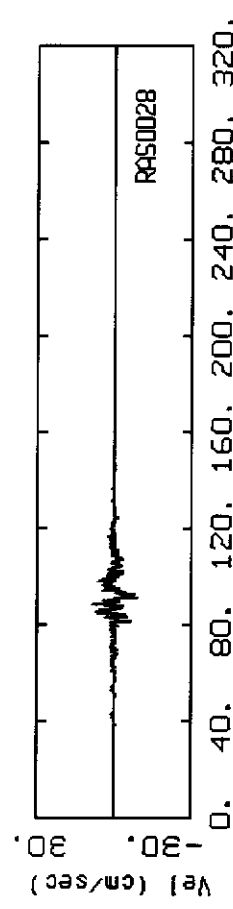
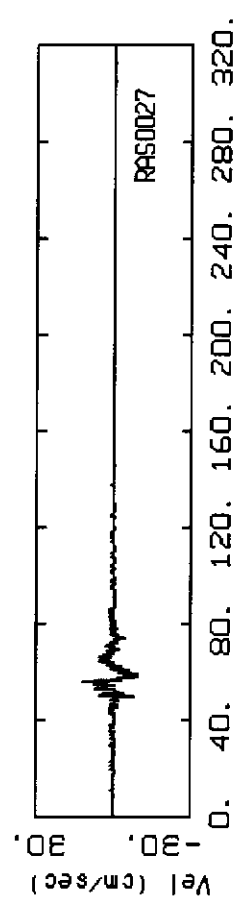
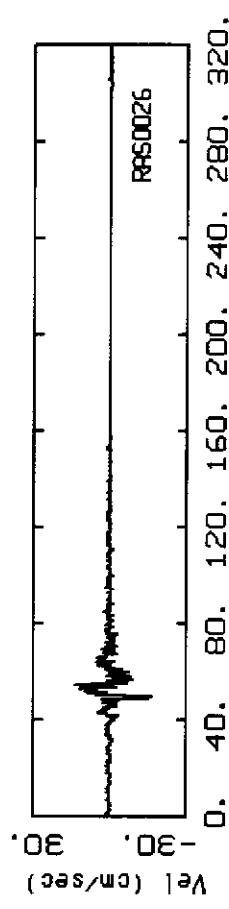
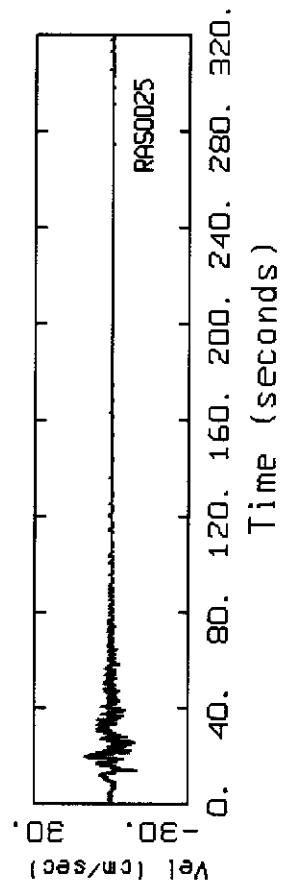
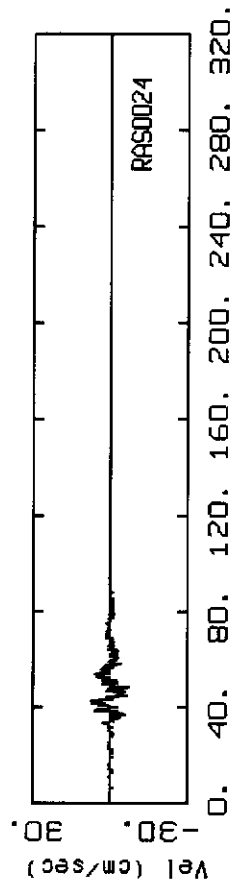
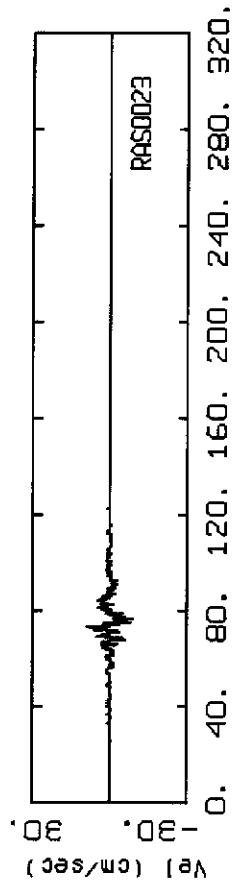
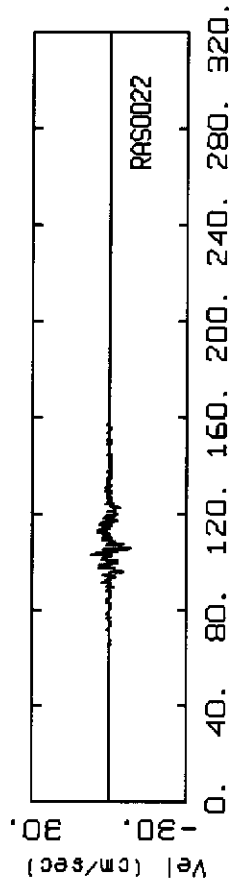
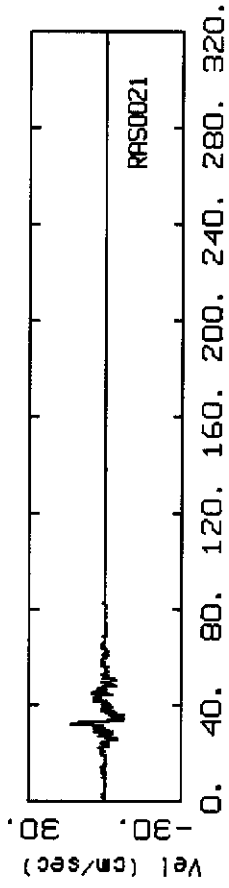
SAN ANDREAS, M=7.9 AT YERBA BUENA SURFACE



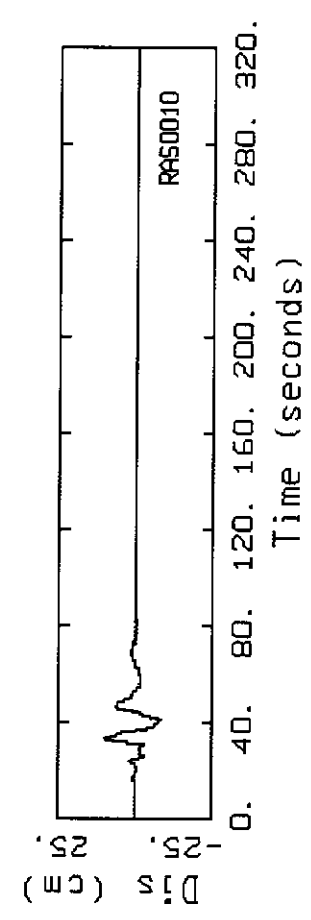
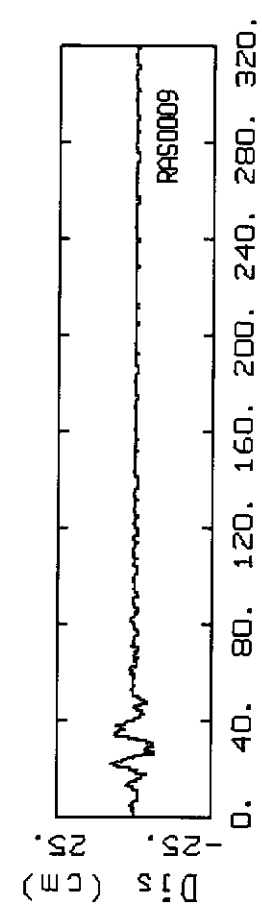
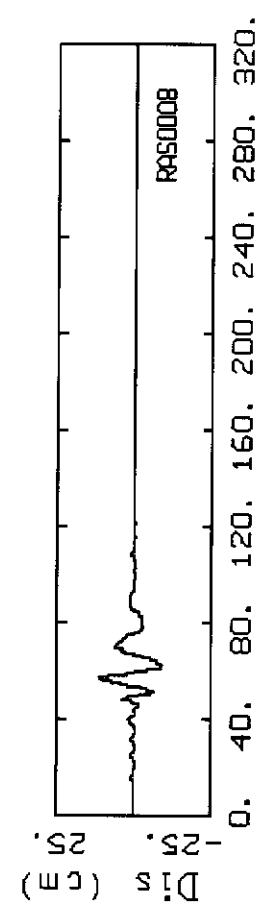
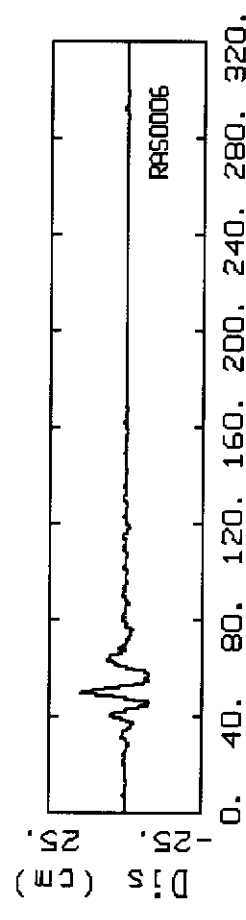
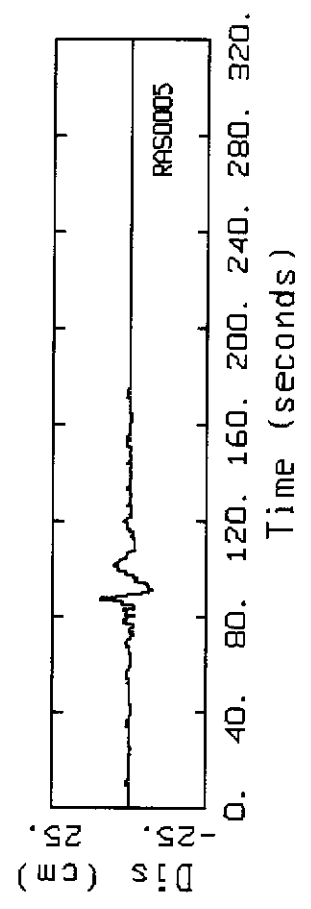
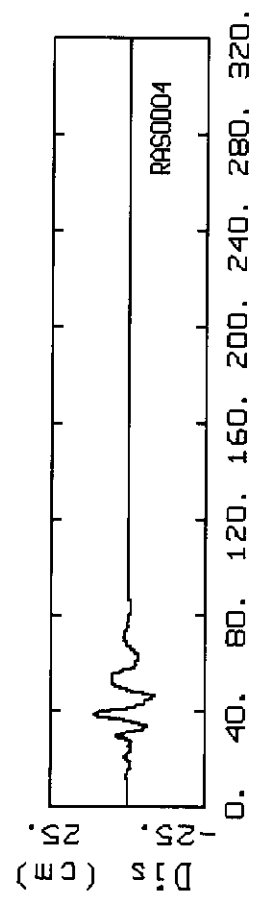
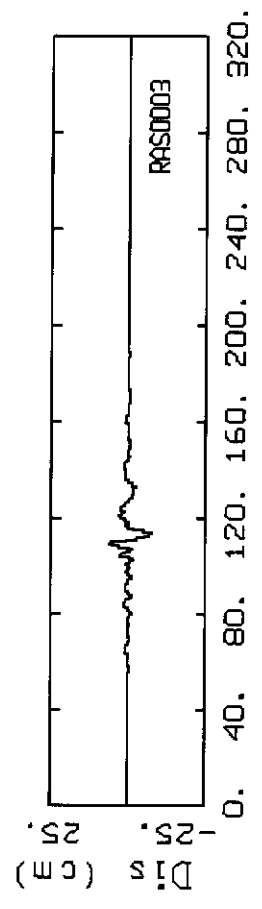
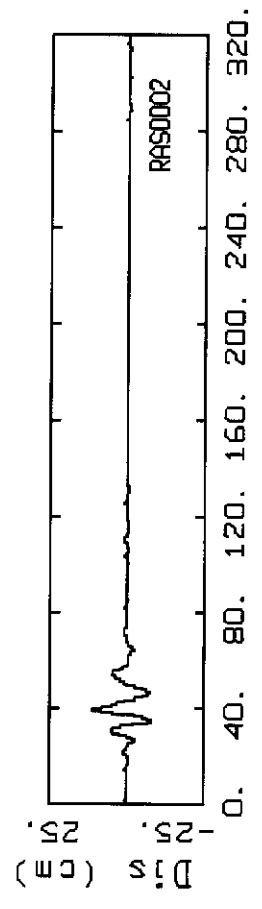
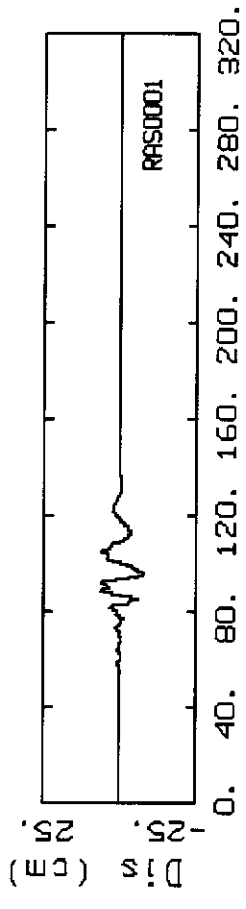
SAN ANDREAS, M=7.9 AT YERBA BUENA SURFACE



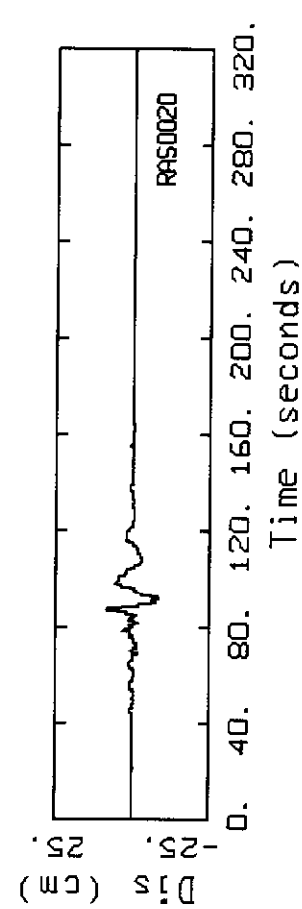
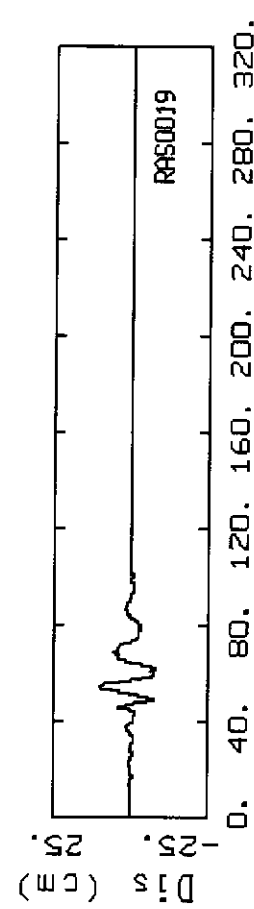
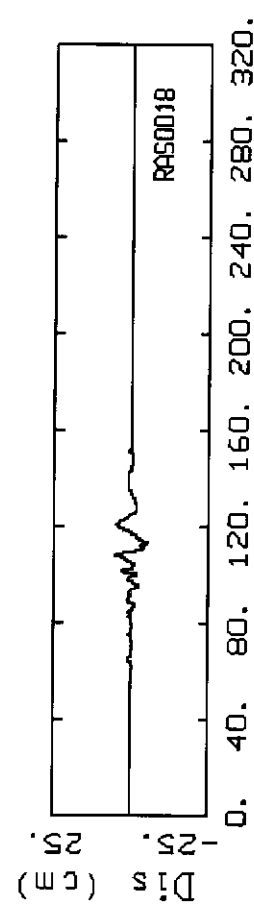
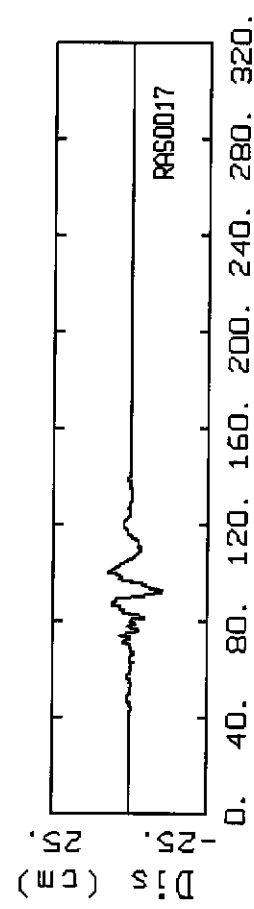
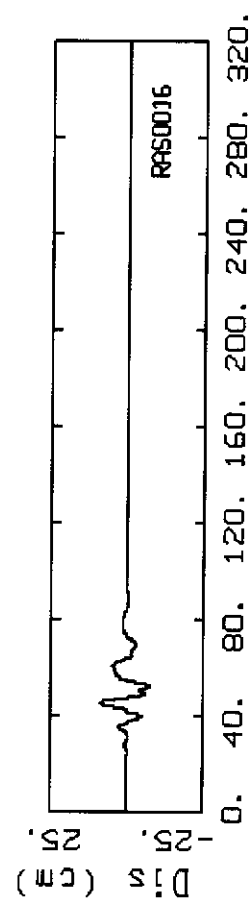
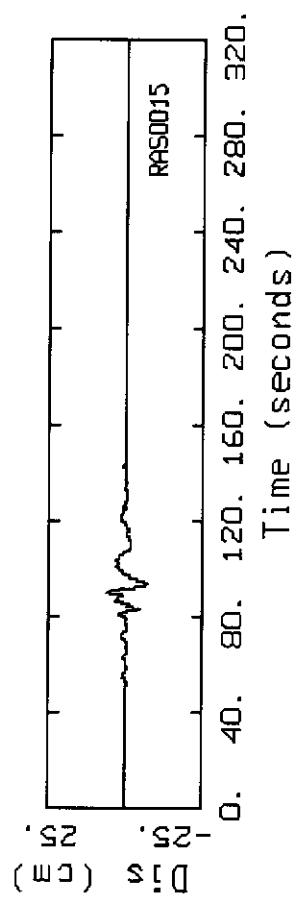
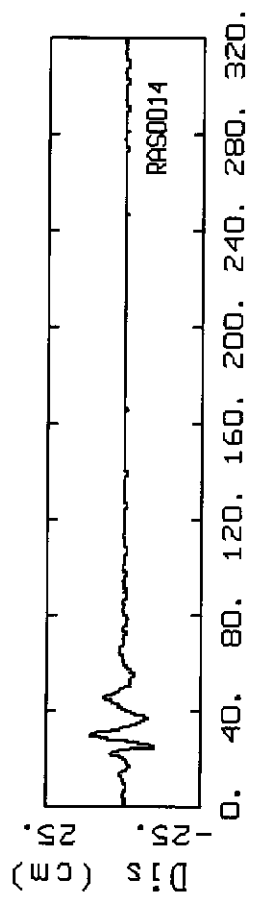
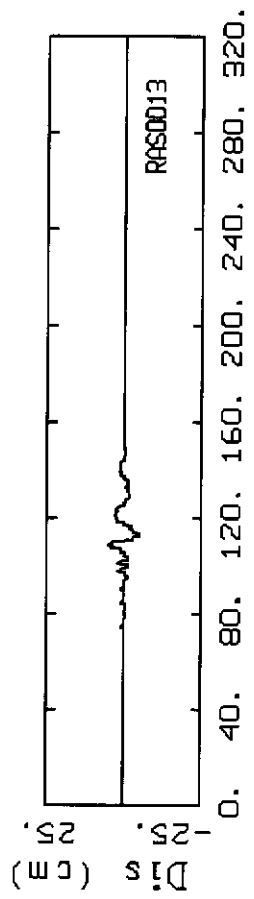
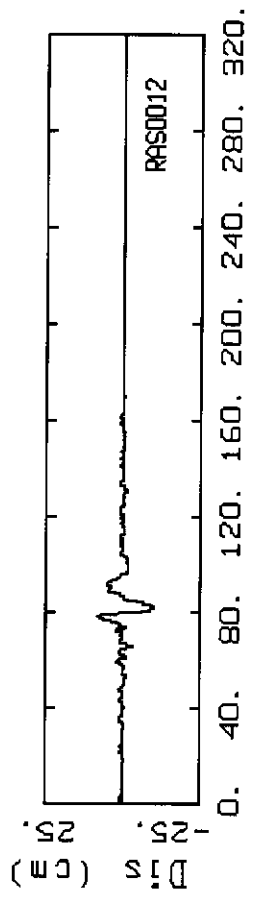
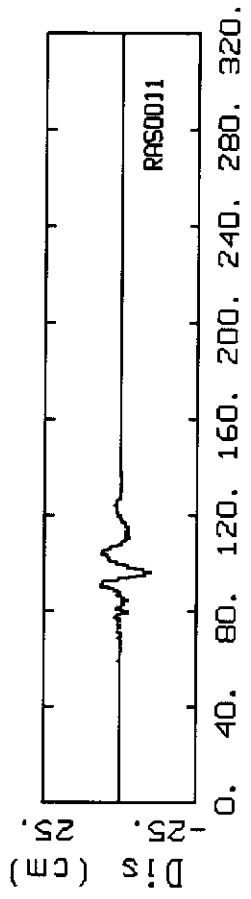
SAN ANDREAS, M=7.9 AT YERBA BUENA SURFACE



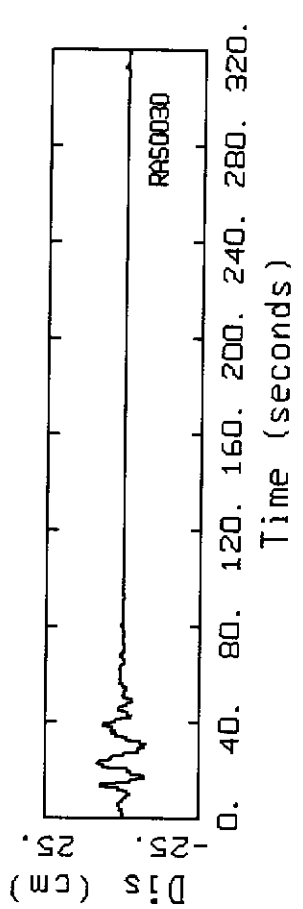
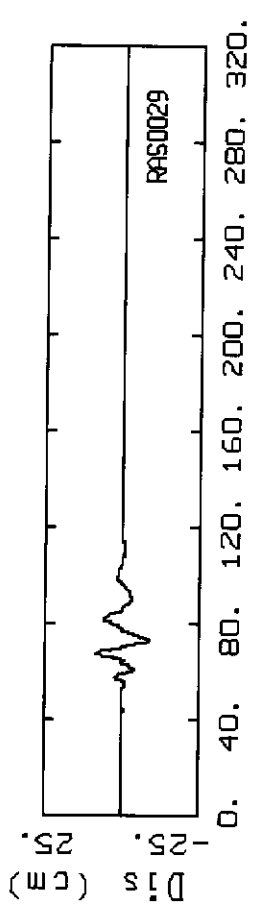
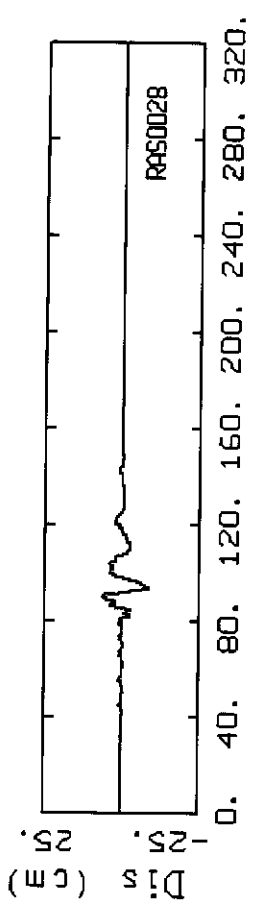
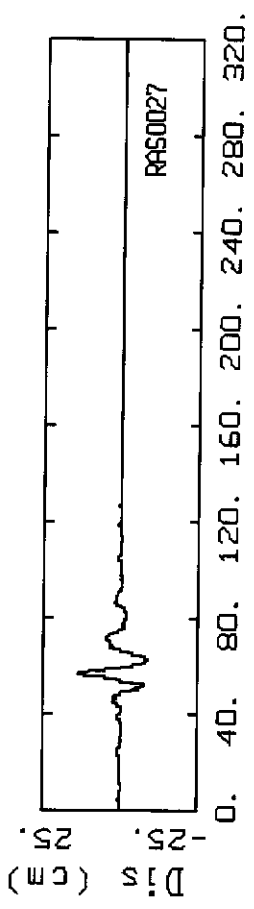
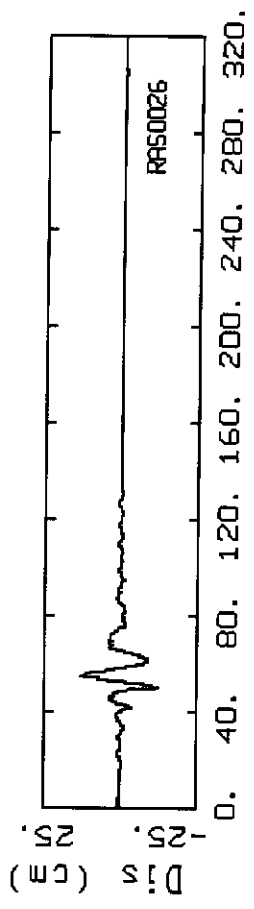
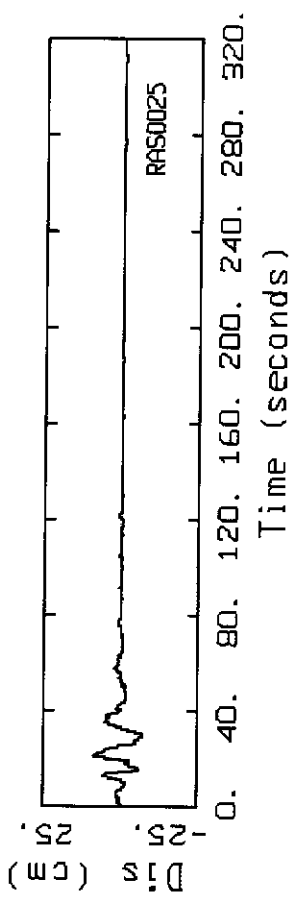
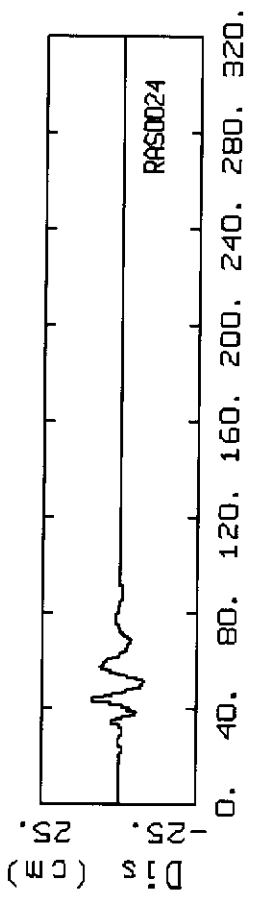
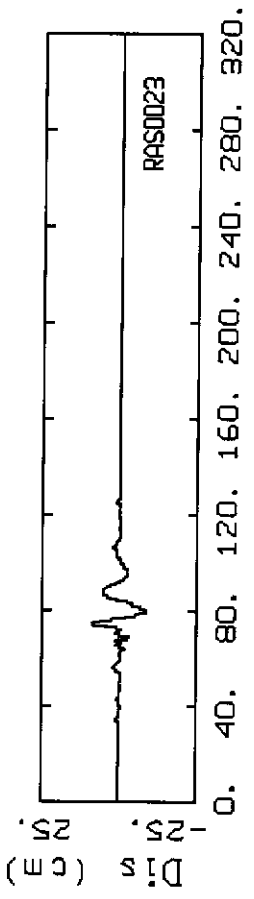
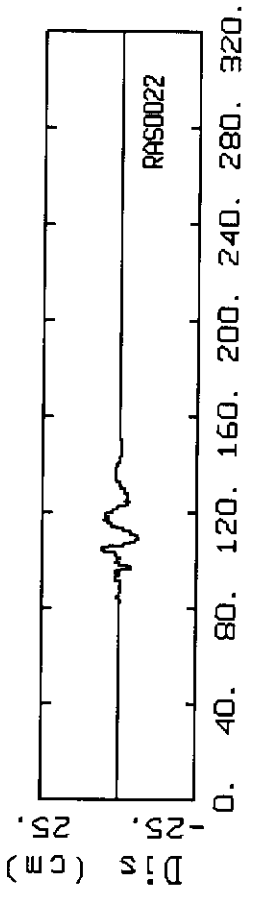
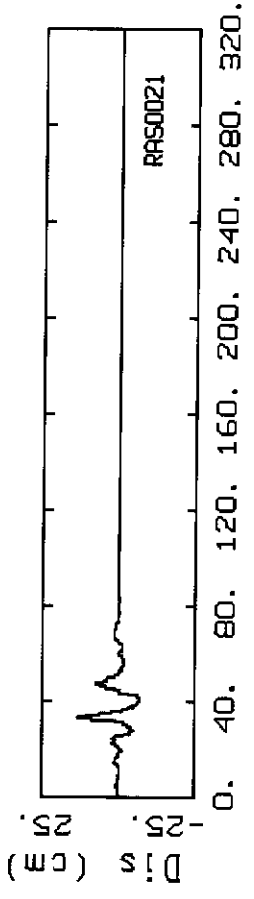
SAN ANDREAS, M=7.9 AT YERBA BUENA SURFACE



SAN ANDREAS, M=7.9 AT YERBA BUENA SURFACE



SAN ANDREAS, M=7.9 AT YERBA BUENA SURFACE



SAN ANDREAS, M=7.9 AT YERBA BUENA SURFACE