

THE ART
GALLERY
UNIVERSITY of NEW HAMPSHIRE

NEWS RELEASE

October 11, 2006

Contact: Catherine A. Mazur, The Art Gallery, UNH
603-862-3713, catherine.mazur@unh.edu

**Contemporary Works by UNH Art Faculty and Figurative Sculptor Lewis Cohen
on View at The Art Gallery, UNH**

DURHAM - Two new exhibitions featuring contemporary sculpture, drawings, photography, prints, and paintings will open to the public at The Art Gallery, Paul Creative Arts Center, UNH, on Saturday, October 28, 2006. *Art Faculty Review: Julee Holcombe, Craig Hood, and Scott Schnepf* highlights recent works in photography, painting, and printmaking by three studio art faculty members in the Department of Art and Art History from the University of New Hampshire. *Lewis Cohen: Five Decades, Drawings and Sculptures: A Retrospective 1951-2006* showcases the 50-year career of an important American figurative artist, whose work includes the public sculpture of John Singleton Copley in Boston's Copley Square.

A preview reception for both exhibitions, open to the public free of charge, will be held on Friday, October 27, from 5:00 to 7:00 p.m. The exhibitions will remain on view through December 11. The Art Gallery will be closed November 22 through November 26.

Art Faculty Review: Julee Holcombe, Craig Hood, and Scott Schnepf includes photographs by Julee Holcombe. A graduate of the University of New Mexico (B.F.A., 1998) and the Maryland Institute College of Art (M.F.A., 2004), Holcombe is the newest faculty member of the University of New Hampshire's Department of Art and Art History in Durham. Using a digital camera to investigate contemporary culture, she "reconstructs interior and exterior environments from an amalgam of different photographs, composing landscapes and portraits that mirror the traditions of painting."

Craig Hood is a graduate of Boston University (B.A., 1975), Pennsylvania State University (B.A., 1979), and Indiana University (M.F.A., 1981). A professor of painting and drawing at the University of New Hampshire since 1981, Hood utilizes landscape fragments and figure groupings to create paintings that are "meditations or melodramas."

Scott Schnepf, a graduate of Augustana College, South Dakota (B.A., 1975), and Kansas State University (M.F.A., 1981), has been a professor of drawing and printmaking at the University of New Hampshire for 25 years. His etchings emphasize the intricate details of the still-life objects he portrays. Cast in an environment of subdued light and clearly defined space, the everyday objects take on new meaning. The resulting works reveal his mastery of printmaking methods and techniques.

The second exhibition on view, *Lewis Cohen: Five Decades, Drawings and Sculptures: A Retrospective 1951-2006*, examines the work of an important American artist whose work is deeply rooted in nineteenth- and early twentieth-century sculpture—specifically in the tradition of clay modeling. The single most important element in Cohen's work is the human figure and, while the artist's debt to the European figurative tradition is apparent, Cohen's figures, according to Aaron H. de Groft, "are his own—hauntingly intense, seemingly ever-present, lovingly remembered, both delicately and harshly rendered, autobiographical, and garishly caricatured." The retrospective exhibition offers a sense of Cohen's evolution as an artist. It presents his drawings and sculptures in chronological and thematic groupings that give viewers an insight to the phases of his work, the progression of his major themes, and the artist's working methods. Throughout his fifty-year career, Cohen has strived to create a synthesis of modernism and tradition in his work. The artist's public sculpture of *John Singleton Copley* located in Boston's Copley Square—a work that is well-

known to New England residents and visitors—evokes an imaginative connection between the distant past and its contemporary environment.

Lewis Cohen: Five Decades, Drawings and Sculptures: A Retrospective 1951-2006 was organized by the Muscarelle Museum of Art, College of William and Mary, Williamsburg, Va. Its UNH showing has been supported in part by the S. Melvin and Mary Jo Rines Art Exhibition Fund and the Friends of The Art Gallery. An illustrated catalogue of the exhibition, with essays by the artist, Aaron H. de Groft, UNH professor emeritus Sigmund Abeles, and Alan Wallach, is available for purchase through The Art Gallery.

Weekly *ArtBreak* programs, offered each Wednesday in conjunction with the exhibitions (free admission), include the following:

Wednesday, November 1, noon, The Art Gallery, Paul Creative Arts Center
ArtBreak – **Gallery Talk** with exhibiting UNH faculty artists Craig Hood and Scott Schnepf.

Wednesday, November 8, noon, The Art Gallery, Paul Creative Arts Center
ArtBreak – **Gallery Talk:** Ben Cariens, sculptor and UNH assistant professor of art, discusses the work of Lewis Cohen.

Wednesday, November 15, noon, The Art Gallery, Paul Creative Arts Center
ArtBreak – **Discussion:** Raina Ames, UNH Department of Theatre and Dance, presents a ‘behind-the-scenes’ look at the upcoming production, *X Factor*.

Wednesday, November 29, noon, A219, Paul Creative Arts Center
ArtBreak – **Slide Lecture** by exhibiting UNH faculty artist Julee Holcombe.

Wednesday, December 6, noon, The Art Gallery, Paul Creative Arts Center
ArtBreak – **Concert** by *Joyful Rain*, with flutist Ellen Rondina and guitarist David Newsam.

Editors: Images available for downloading from *Art Faculty Review: Julee Holcombe, Craig Hood, and Scott Schnepf* include:



Julee Holcombe, *Feast of the Newlyweds*, 2005, Chromogenic print, 25” x 21”
http://www.unh.edu/art-gallery/images/Faculty_show_2006/Julee_Holcombe_Feast_of_the_Newlyweds.JPG

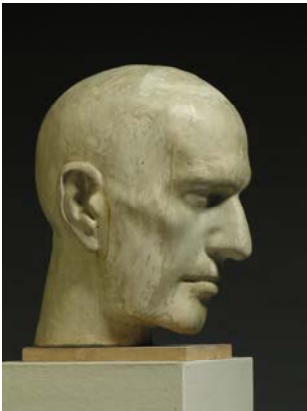


Craig Hood, *Firewood*, 2005, oil on canvas, 30'' x 40''
[http://www.unh.edu/art-gallery/images/Faculty show
2006/Craig_Hood_Firewood_2005_oil_canvas_30_x_40.jpg](http://www.unh.edu/art-gallery/images/Faculty%20show%202006/Craig_Hood_Firewood_2005_oil_canvas_30_x_40.jpg)

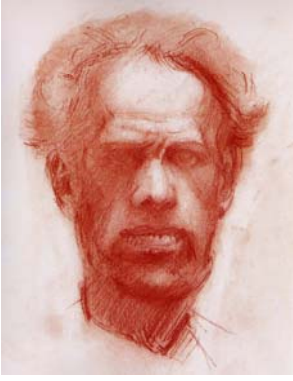


Scott Schnepf, *Annunciation*, 2006, reduction woodcut, 12'' x 12''
[http://www.unh.edu/art-gallery/images/Faculty show
2006/Scott_Schnepf_Annunciation.JPG](http://www.unh.edu/art-gallery/images/Faculty%20show%202006/Scott_Schnepf_Annunciation.JPG)

Editors: Images available for downloading from *Lewis Cohen: Five Decades, Drawings and Sculptures: A Retrospective 1951-2006* include:



Lewis Cohen, *Descent*, 2005, plaster, 10'' x 8'' x 8.5''
[http://www.unh.edu/art-gallery/images/Lewis
Cohen/Lewis_Cohen_Descent_2005_plaster.JPG](http://www.unh.edu/art-gallery/images/Lewis_Cohen/Lewis_Cohen_Descent_2005_plaster.JPG)



Lewis Cohen, *Self-Portrait*, 2003, conte crayon on paper, 11" x 8.25"

http://www.unh.edu/art-gallery/images/Lewis_Cohen/Lewis_Cohen_Self_Portrait_2003.JPG



Lewis Cohen, *Soliloquy*, 2006, bronze, 19" x 14.75" x 15"

http://www.unh.edu/art-gallery/images/Lewis_Cohen/Lewis_Cohen_Soliloquy_2006.JPG

The Art Gallery's exhibitions and programs are open to the public free of charge during the academic year. Hours are Monday-Wednesday, 10 a.m.-4 p.m.; Thursday, 10 a.m.-8 p.m.; and Saturday and Sunday, 1-5 p.m.; closed Fridays and University holidays. The Art Gallery will be closed November 22 through November 26, 2006.

The exhibitions and programs are supported in part by the Friends of The Art Gallery. Guided group tours for schools and other organizations are available with advance reservation by contacting Catherine A. Mazur, education and publicity coordinator, at 603-862-3713 or catherine.mazur@unh.edu. For more information on the exhibitions and programs, contact The Art Gallery at 603-862-3712, art.gallery@unh.edu, or visit www.unh.edu/art-gallery.