



Dixie National Forest – Forest Technician

Cedar City, Utah

Michael Anthony



Location

The Dixie National Forest is located in south west Utah and is 31 miles southeast of Cedar City. Four districts make up the Dixie National Forest and the Cedar City district is located in the 2nd district. The entire forest contains 1,883,895 acres of forest, designated wilderness and a national monument. Elevations average between 5,700 feet and 11,000 feet. The Dixie National Forest is a place of extremes. On the Dixie, the red rock country associated with nearby National Parks meets high alpine forests, providing a rich scenic experience. While on district 2, Bryce Canyon National Park and Cedar Breaks National Monument are both within an hours drive.

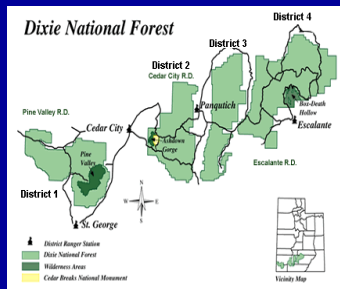


Figure 1: Dixie National Forest Districts

Project Goals

The main goal of the resource response team was to ensure that OHV's were not creating any negative environmental impacts from using the trail network. To ensure this, the constructions of post and rail barricades were built at trailheads and problem areas to control resource damage. As well as barricades, felling hazard trees and building long connecting barricades to act as fences so OHV's would not travel around the structure to a closed off trail. This was the first year that the Dixie N.F. created a team specifically designated to only deal with resource damage. New ideas were constantly thought of and new problems constantly occurred. The main goal was to try to find ways to control resource damage and limit new trails built by OHV's illegally.

Closing off old trails and old logging roads was another goal of our crew. The closing of trails would be done by felling dead snag trees or live trees if necessary. Heavily blocking the closed trail was the only way to ensure future use. Once closed, most of the trails were raked and torn up and then planted with grass seed. Other re-seeding projects were done around roads, trails and heavily used camp sites. Our success depended on our teamwork and ability to perform as a two man team. The ability to make 'in the field' decisions was very important due to the little contact during work hours and working in secluded areas.

Environmental Geography and The Resource Response Team

Environmental geography is the interaction between humans and the physical earth. This is very relevant in public land use areas such as national forests and parks. Many negative impacts are caused by recreation and improper use of land. It is a very difficult task to educate some OHV users due to the Forest Services efforts to control resource damage. People recreating on the forest want to enjoy the land they have a right to use, the Forest Service's goal is to allow everyone to enjoy the land but for them to do it with the smallest impact possible.

Tools Used

- Hack saw
- Dig bar
- Mechanical Auger
- ATV's
- McLeod
- Pulaski
- Shovels
- Chainsaw
- Drills



Figure 2: Felling a tree to close a trail



Figure 5: Clearing the road of a fallen tree

Dixie National Forest OHV Recreation

The Cedar City district has an extensive trail network of over 400 miles of marked OHV trails. This trail network contains many secluded areas which is why it is very important to keep existing trails and not have new trails made by people venturing off trail. Utah state law does not allow OHV's to travel on any road or state highway; this creates a need for trail networks in towns and villages.



Figure 4: Sighting the tree



Figure 3: Trail Head Barricade