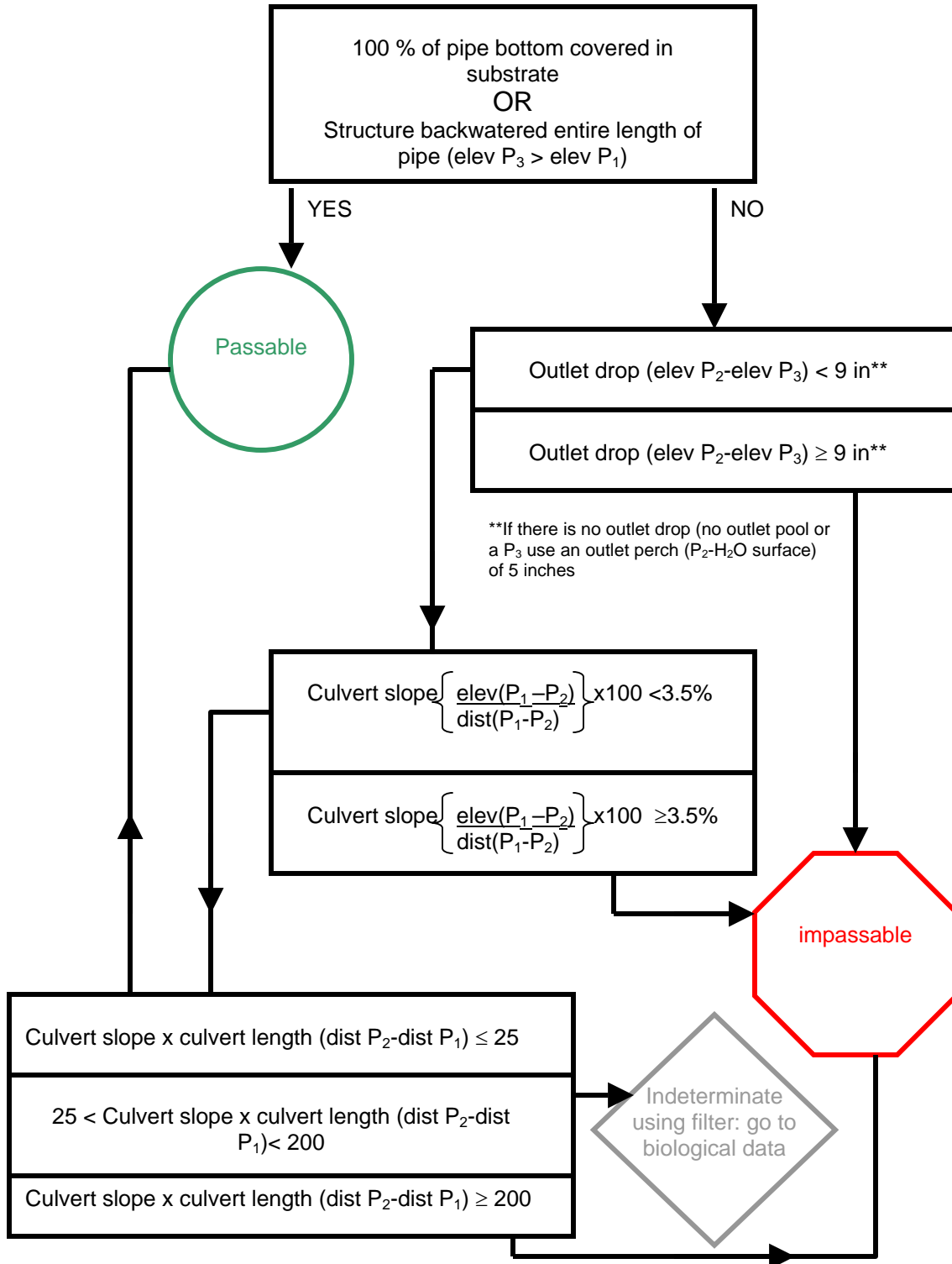
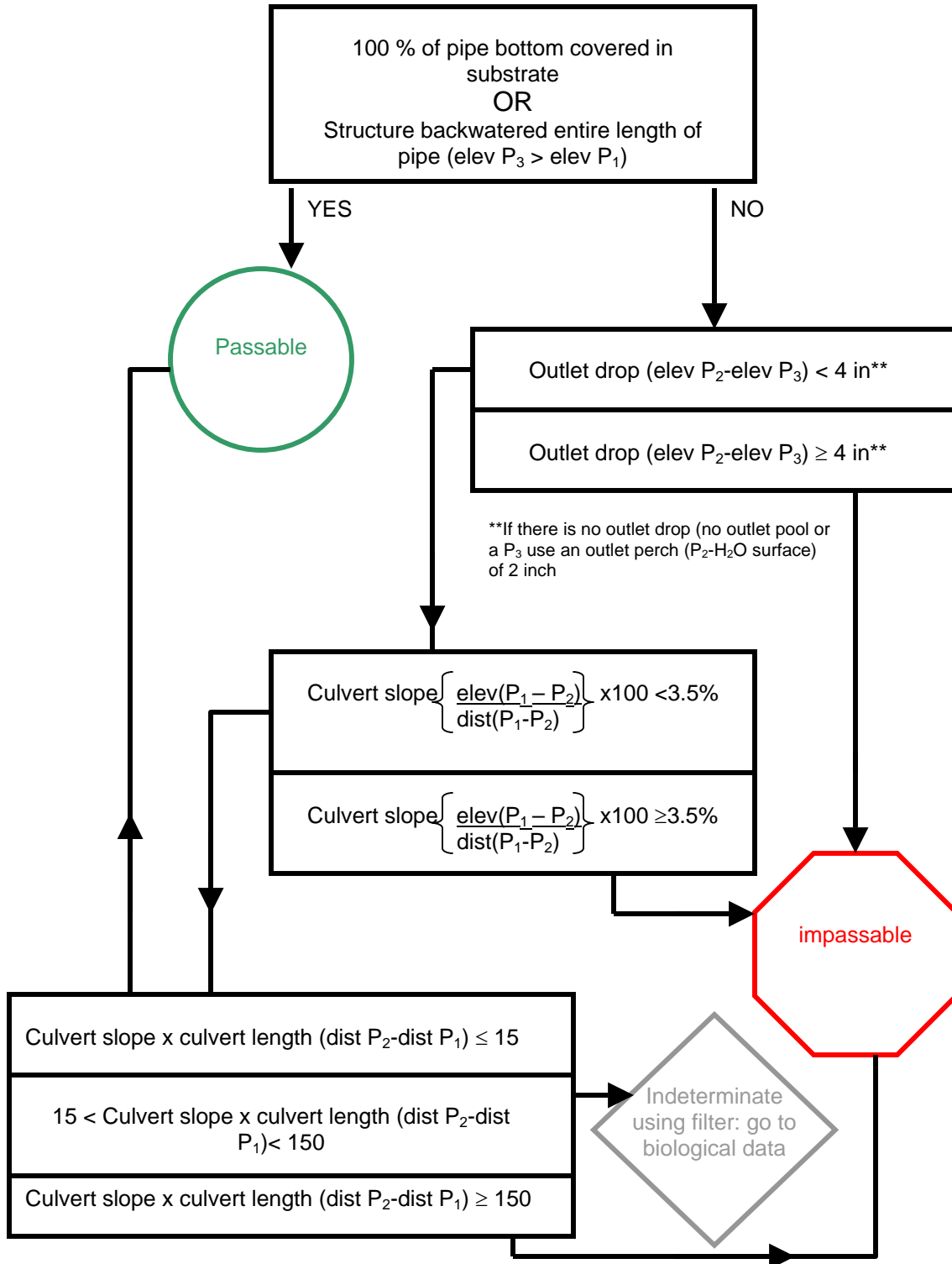


Fish passage predictive model A for Salmonidae, Osmeridae, Lepisosteidae, and Esocidae. Based on physical measurements from Clarkin, K., et al. 2003. National inventory and assessment procedure for identifying barriers to aquatic organism passage at road-stream crossings. USDA Forest Service, San Dimas Technology and Development Center. San Dimas, CA. See attached figure detailing profile of survey points used in fish passage coarse filter. Elevation and distance measurements are in feet.

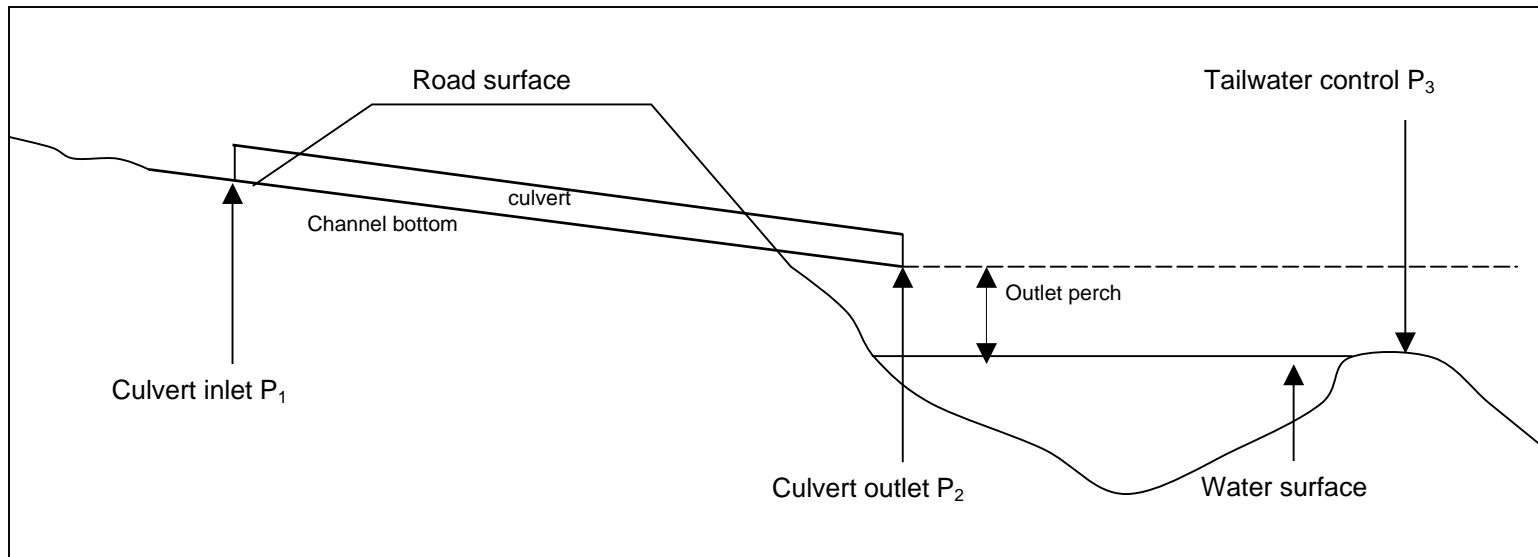


Fish passage predictive model B for Cyprinidae, Fundulidae, Aphredoderidae, Gasterosteidae, Umbridae, Atherinidae, and Poeciliidae families. Based on physical measurements from Clarkin, K., et al. 2003. National inventory and assessment procedure for identifying barriers to aquatic organism passage at road-stream crossings. USDA Forest Service, San Dimas Technology and Development Center. San Dimas, CA. See attached figure detailing profile of survey points used in fish passage coarse filter. Elevation and distance measurements are in feet.



Fish passage predictive model C for *Percina*, *Etheostoma*, Cottidae, Amblyopsidae, Elasmobranchidae. Based on physical measurements from Clarkin, K., et al. 2003. National inventory and assessment procedure for identifying barriers to aquatic organism passage at road-stream crossings. USDA Forest Service, San Dimas Technology and Development Center. San Dimas, CA. See attached figure detailing profile of survey points used in fish passage coarse filter. Elevation and distance measurements are in feet.

Profile of survey points 01/10/2005



Profile of survey points used in fish passage coarse filters A, B, and C. Distance and elevation is measured (in feet) for each location point designated by P<sub>n</sub>. Adapted from Clarkin, K., et al. 2003. National inventory and assessment procedure for identifying barriers to aquatic organism passage at road-stream crossings. USDA Forest Service, San Dimas Technology and Development Center. San Dimas, CA.