



UNIVERSITY *of* NEW HAMPSHIRE

Draft

**Solid Waste Environmental Management Plan
Initial Development / Brainstorming Project**

by

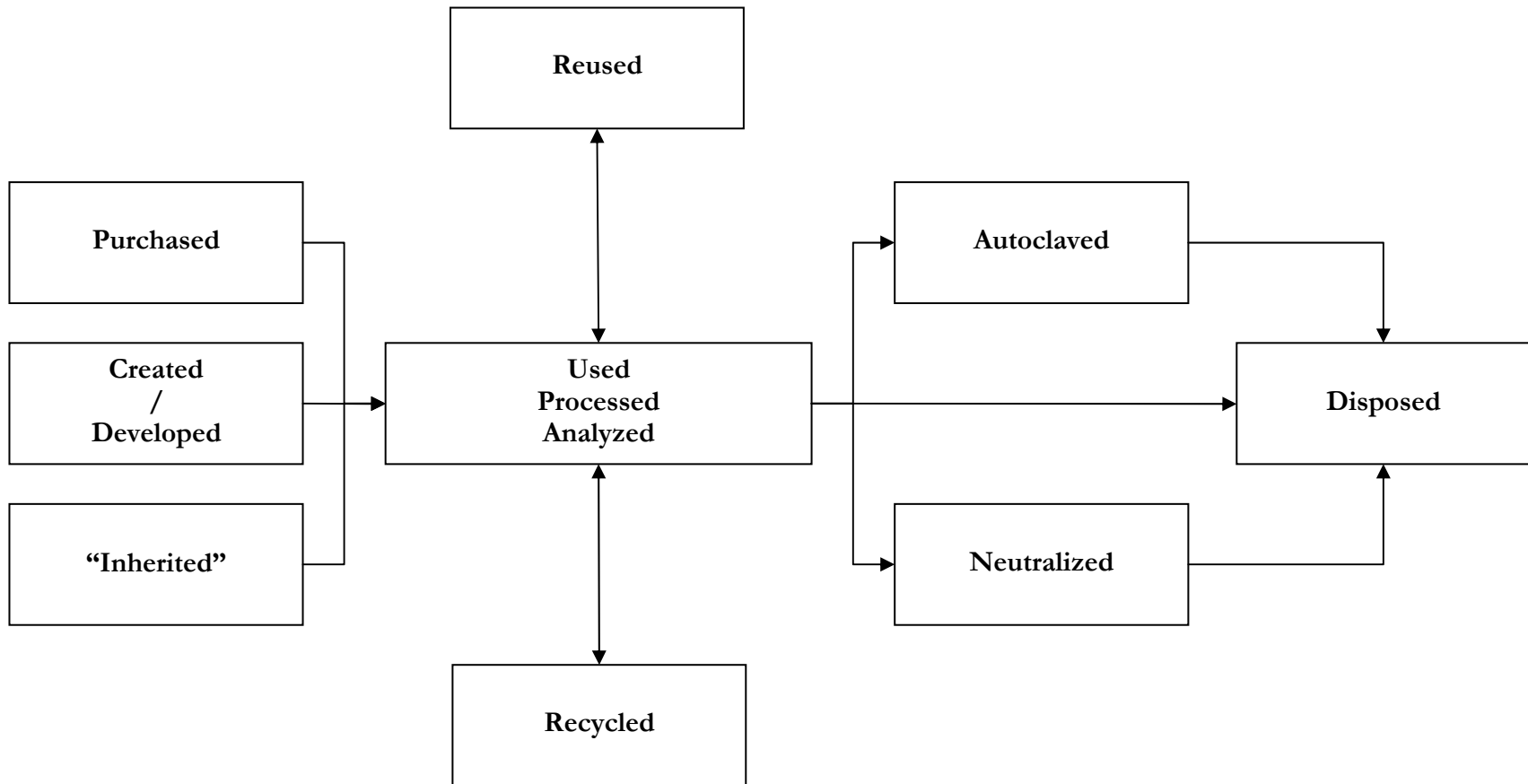
**David R. Gillum
Bradford C. Manning**

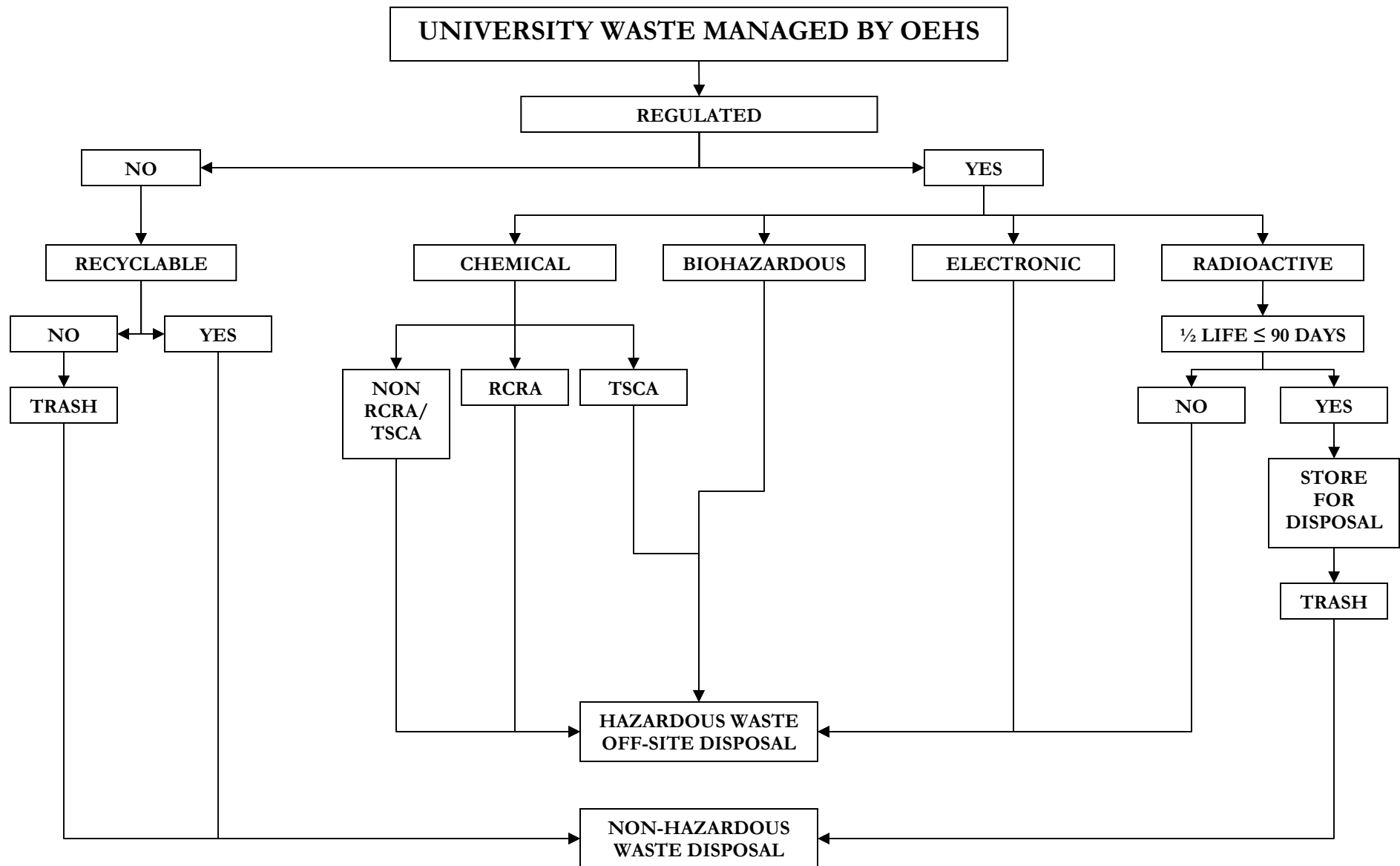
December 12, 2003

DRAFT - Waste Streams at UNH

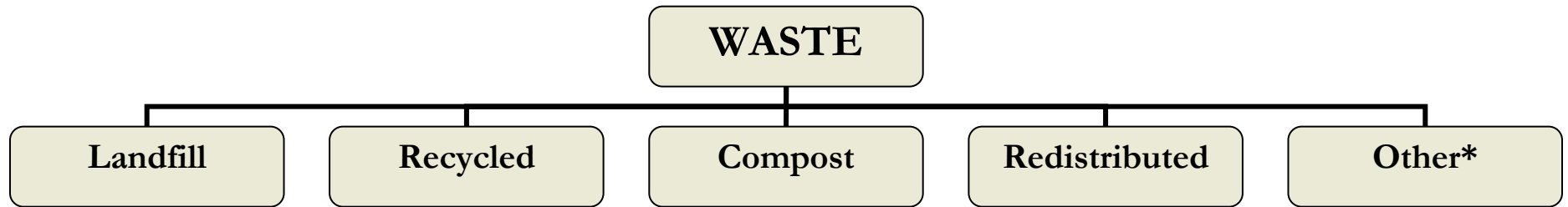
Waste	Responsible Party	Key Player(s)
1. Abandoned property waste		
a. Abandoned waste	Facilities Maintenance	Duncan Pollock/Irving Canner/Guy Eaton
2. Agricultural waste		
a. Dairy Facility	Animal & Nutritional Sciences	Tom Oxford/John Whitehouse
b. Burleigh Demeritt Farm	Animal & Nutritional Sciences	Tom Oxford
c. Poultry Farm	Animal & Nutritional Sciences	Tom Oxford/Robert Taylor
d. Equine Center	Animal & Nutritional Sciences	Tom Oxford/Sue Bruns
e. Greenhouses	Plant Biology/Thompson School	David Goudreault
f. Woodman Farm	Plant Biology	John McLean
3. Chemical waste		
a. Asbestos	EHS/Facilities Maintenance	Marty McCrone/Duncan Pollock/Paul Chamberlin
b. Paints and oils	EHS/Facilities Maintenance	Marty McCrone
c. PCB ballasts	EHS/Facilities Maintenance	Marty McCrone/Duncan Pollock/Irving Canner
d. PCB Oil	EHS/Various	Marty McCrone
e. Radioactive waste	EHS	Andy Glode
f. Various hazardous waste	EHS/Various	Marty McCrone
4. Construction/demolition waste		
a. Construction debris	Facilities Maintenance	Paul Chamberlin
5. Electronic waste		
a. Computer waste	EHS/Various	Pam Campbell
b. Scientific Equipment	EHS/Various	Pam Campbell
c. Telephones	EHS/Various	Pam Campbell
d. PDAs	EHS/Various	Pam Campbell
e. Radios	EHS/Various	Pam Campbell
f. Televisions	EHS/Various	Pam Campbell
g. Power supplies	EHS/Various	Pam Campbell
h. Other electronic waste	EHS/Various	Pam Campbell
6. Food waste		
a. MUB	Memorial Student Union	Mary Anne Lustgraaf
b. Dining Halls	Dining Services	Rick MacDonald
7. Infectious waste		
a. Biomedical/biological waste	EHS/Various	Marty McCrone
8. Municipal solid waste		
a. Non-regulated trash	Custodial Services	Guy Eaton
9. Non-hazardous, non-MSW Waste		
a. Refrigerants	Facilities Maintenance	Duncan Pollock/Irving Canner/Gary Hall
10. Storm water waste		
a. Salt/sand	Facilities Maintenance	Duncan Pollock/Irving Canner
11. Universal waste		
a. Batteries	EHS/Facilities Maintenance	Marty McCrone/Duncan Pollock/Irving Canner
i. Wet cell	EHS/Facilities Maintenance	Marty McCrone/Duncan Pollock/Irving Canner
ii. Dry cell	EHS/Facilities Maintenance	Marty McCrone/Duncan Pollock/Irving Canner
b. Ballasts (non-PCB)	EHS/Facilities Maintenance	Marty McCrone/Duncan Pollock/Irving Canner
c. Light bulbs	EHS/Facilities Maintenance	Marty McCrone/Duncan Pollock/Irving Canner
12. Yard/roadside waste		
a. Non-regulated waste	Grounds & Roads	Guy Eaton

Example of a Waste Stream





What happens to UNH waste?



* Incineration, neutralization, disinfection, etc.

Managing Waste Streams

1. Determine origin/source.
2. Analyze use of original product.
3. Find and implement more environmentally friendly products.
4. Reduce consumption of initial product to reduce waste load.
5. Find alternate uses for waste, such as recycling or composting.
6. Analyze impact of waste on the environment.
7. Monitor waste stream on a regular basis.

Pollution Prevention at UNH

Pollution	Responsible Party /Key Player
1.	
2.	
3.	
4.	
5.	
6.	
7.	
8.	
9.	
10.	
11.	
12.	
13.	
14.	
15.	

Recycling at UNH

Recycling	Responsible Party /Key Player
1. Battery Recycling	
2. Chemicals & Liquids	
3. Electronics Recycling	
4. Food Waste & Composting	
5. Glass Recycling	
6. Mineral Recycling	
7. Paper Recycling	
8. Plastic Recycling	
9. Scrap Metal Recycling	
10. Textile Recycling	
11. Tire & Rubber Recycling	
12. Used Consumer Items	
13. Waste Collection & Disposal	
14. Wood & Pallet Recycling	