

UNIVERSITY of NEW HAMPSHIRE

Catch Basin / Outfall Mapping Project

Environmental Health & Safety and UNH Facilities
EPA Storm Water Phase II Program

Grid ID
G08

ID NUMBER	FEATURE	CLASSIFICATION	CHECK(✓)
CB_0733	Catch Basin	Trench Drain	
CB_0123	Catch Basin	Invert	
CB_0124	Catch Basin	Invert	
CB_0125	Catch Basin	Invert	
CB_0126	Catch Basin	Invert	
CB_0127	Catch Basin	Invert	
CB_0128	Catch Basin	Invert	
CB_0126a	Catch Basin	Invert	
DM_0035	Drain Manhole	Manhole	
DM_0036	Drain Manhole	Manhole	
OTF_0105	Outfall	Culvert	
OTF_0106	Outfall	Culvert	
OTF_0107	Outfall	Pipe	
OTF_0108	Outfall	Pipe	
OTF_0109	Outfall	Pipe	
OTF_0110	Outfall	Pipe	
OTF_0113	Outfall	Surface	
OTF_0212	Outfall	Culvert	

Comments:

Inspector Name (print) _____ Inspector Signature _____

Date _____

GRID APPROVAL YES / NO
(circle one)

CATCH BASINS

TYPE

- Invert (616)
- Lawn / Direct Drain (60)
- Trench Drain (54)
- Building Drain (38)
- Box Drain (4)
- Terrace Drainage Basin (2)
- Drain Manhole (160)
- Town of Durham Catch Basin (596)
- Storm Water Treatment Facility

OUTFALLS

TYPE

- Culvert (49)
- Pipe (160)
- Surface (50)

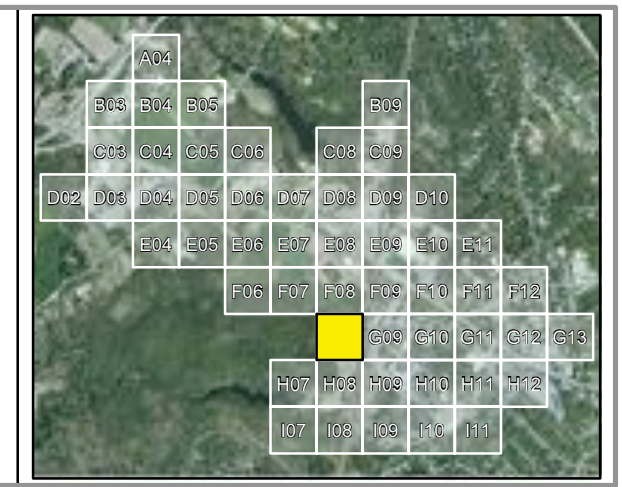
OTHER

- Inlet
- Water Way (FEMA)
- Flow Direction
- Drain Line (1474)

UNIVERSITY of NEW HAMPSHIRE
Facilities Information Technology
(GIS) Department
Timothy Sullivan, GIS Administrator
Samuel Lingenman, GIS Analyst
(603) 862-3831

Scale: 0 25 50 100 Feet
1:1,100

Coordinate System:
New Hampshire State Plane
NAD83 / U.S. Feet



* Not all positions were collected via GPS survey. Some features were placed based on historical evidence and field investigations. Some displacement of the features may be evident on the image (i.e. manholes located on roof tops). This is due to optical distortion influenced by topographic relief displacement. Topographic relief displacement is caused by a change in elevation values relative to the position of the sensor at the time of the image capture.

* Color imagery bands (RGB - 3, 2, 1) have been adjusted to reflect a black & white composite (RGB - 1, 1, 1) to enhance the feature depiction.

* Drainage features are not drawn to scale and are over emphasized for validation purposes.

* Drainage features reflect their true direction and bearing (-16.05 magnetic declination).