



# UNIVERSITY of NEW HAMPSHIRE

## Catch Basin / Outfall Mapping Project

Environmental Health & Safety and UNH Facilities  
EPA Storm Water Phase II Program

Grid ID

**F09**

\* Note: Due to the large quantity of features depicted within this reference grid, the associated tabular checklist has been referred to the following page.

Comments:

Inspector Name (print)

Inspector Signature

Date

**GRID APPROVAL**

**YES / NO**

(circle one)

### CATCH BASINS

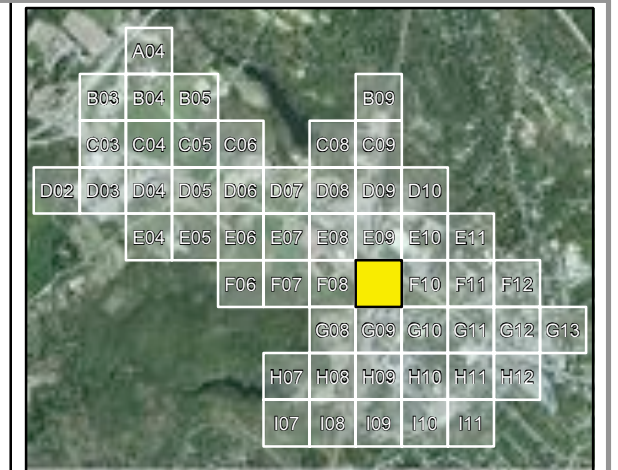
- TYPE**
- Invert (616)
  - Lawn / Direct Drain (60)
  - Trench Drain (54)
  - Building Drain (38)
  - Box Drain (4)
  - Terrace Drainage Basin (2)
  - Drain Manhole (160)
  - Town of Durham Catch Basin (596)
  - Storm Water Treatment Facility

### OUTFALLS

- TYPE**
- Culvert (49)
  - Pipe (160)
  - Surface (50)
- OTHER**
- Inlet
  - Water Way (FEMA)
  - Flow Direction
  - Drain Line (1474)

UNIVERSITY of NEW HAMPSHIRE  
Facilities Information Technology  
(GIS) Department  
Timothy Sullivan, GIS Administrator  
Samuel Lingeman, GIS Analyst  
(603) 862-3831

0 25 50 100  
Feet  
1:1,100  
Coordinate System:  
New Hampshire State Plane  
NAD83 / U.S. Feet



\* Not all positions were collected via GPS survey. Some features were placed based on historical evidence and field investigations. Some displacement of the features may be evident on the image (i.e. manholes located on roof tops). This is due to optical distortion influenced by topographic relief displacement. Topographic relief displacement is caused by a change in elevation values relative to the position of the sensor at the time of the image capture.  
\* Color imagery bands (RGB - 3, 2, 1) have been adjusted to reflect a black & white composite (RGB - 1, 1, 1) to enhance the feature depiction.  
\* Drainage features are not drawn to scale and are over emphasized for validation purposes.  
\* Drainage features reflect their true direction and bearing (-16.05 magnetic declination).