

UNIVERSITY of NEW HAMPSHIRE

Catch Basin / Outfall Mapping Project

*Environmental Health & Safety and UNH Facilities
EPA Storm Water Phase II Program*

Grid ID	D06
---------	-----

ID NUMBER	FEATURE	CLASSIFICATION	CHECK(✓)
CB_0243	Catch Basin	Invert	
CB_0646	Catch Basin	Invert	
CB_0740	Catch Basin	Invert	
CB_0741	Catch Basin	Invert	
CB_0742	Catch Basin	Invert	
DM_0026	Drain Manhole	Manhole	
DM_0027	Drain Manhole	Manhole	
DM_0073	Drain Manhole	Manhole	
OTF_0225	Outfall	Culvert	

Comments:

Inspector Name (print)	Inspector Signature
------------------------	---------------------

Date	GRID APPROVAL YES / NO <small>(circle one)</small>
------	--

CATCH BASINS

TYPE

- Invert (616)
- ⊕ Lawn / Direct Drain (60)
- Trench Drain (54)
- Building Drain (38)
- Box Drain (4)
- ⬮ Terrace Drainage Basin (2)
- Ⓧ Drain Manhole (160)
- Town of Durham Catch Basin (596)
- Storm Water Treatment Facility

OUTFALLS

TYPE

- ↓ Culvert (49)
- ⇩ Pipe (160)
- ⇩ Surface (50)

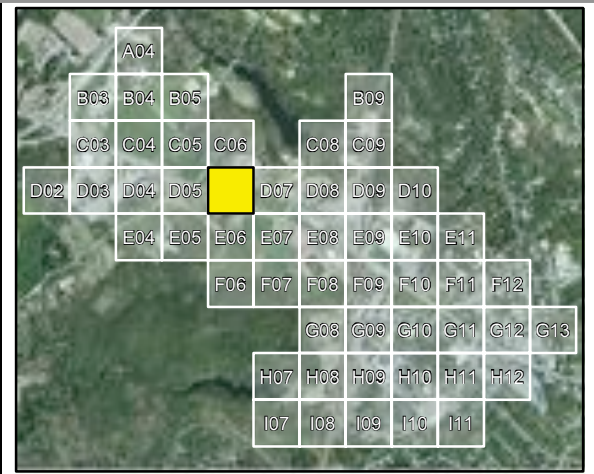
OTHER

- Inlet
- ~ Water Way (FEMA)
- ↑ Flow Direction
- - - Drain Line (1474)

0 25 50 100 Feet

1:1,100

Coordinate System: New Hampshire State Plane NAD83 / U.S. Feet



* Not all positions were collected via GPS survey. Some features were placed based on historical evidence and field investigations. Some displacement of the features may be evident on the image (i.e. manholes located on roof tops). This is due to optical distortion influenced by topographic relief displacement. Topographic relief displacement is caused by a change in elevation values relative to the position of the sensor at the time of the image capture.

* Color imagery bands (RGB - 3, 2, 1) have been adjusted to reflect a black & white composite (RGB - 1, 1, 1) to enhance the feature depiction.

* Drainage features are not drawn to scale and are over emphasized for validation purposes.

* Drainage features reflect their true direction and bearing (-16.05 magnetic declination).