



UNIVERSITY of NEW HAMPSHIRE

Catch Basin / Outfall Mapping Project

*Environmental Health & Safety and UNH Facilities
EPA Storm Water Phase II Program*

Grid ID	D02
---------	-----

ID NUMBER	FEATURE	CLASSIFICATION	CHECK(✓)
OTF_0024	Outfall	Pipe	

Comments:

Inspector Name (print)	Inspector Signature
------------------------	---------------------

Date	GRID APPROVAL YES / NO <small>(circle one)</small>
------	--

CATCH BASINS

TYPE

- Invert (616)
- Lawn / Direct Drain (60)
- Trench Drain (54)
- Building Drain (38)
- Box Drain (4)
- Terrace Drainage Basin (2)
- Drain Manhole (160)
- Town of Durham Catch Basin (596)
- Storm Water Treatment Facility

OUTFALLS

TYPE

- Culvert (49)
- Pipe (160)
- Surface (50)

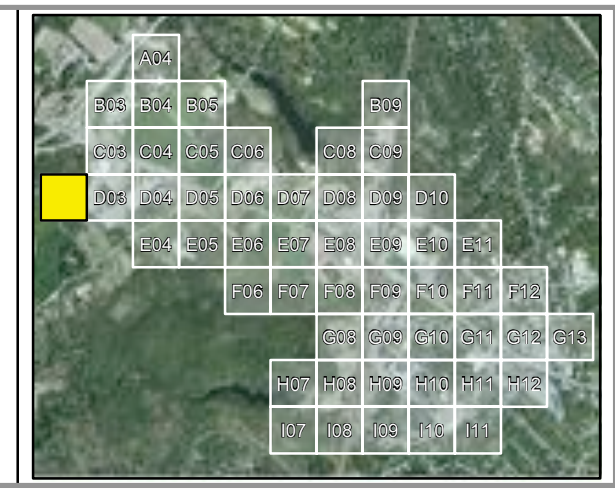
OTHER

- Inlet
- Water Way (FEMA)
- Flow Direction
- Drain Line (1474)

0 25 50 100
Feet

1:1,100

Coordinate System:
New Hampshire State Plane
NAD83 / U.S. Feet



* Not all positions were collected via GPS survey. Some features were placed based on historical evidence and field investigations. Some displacement of the features may be evident on the image (i.e. manholes located on roof tops). This is due to optical distortion influenced by topographic relief displacement. Topographic relief displacement is caused by a change in elevation values relative to the position of the sensor at the time of the image capture.

* Color imagery bands (RGB - 3, 2, 1) have been adjusted to reflect a black & white composite (RGB - 1, 1, 1) to enhance the feature depiction.

* Drainage features are not drawn to scale and are over emphasized for validation purposes.

* Drainage features reflect their true direction and bearing (-16.05 magnetic declination).