



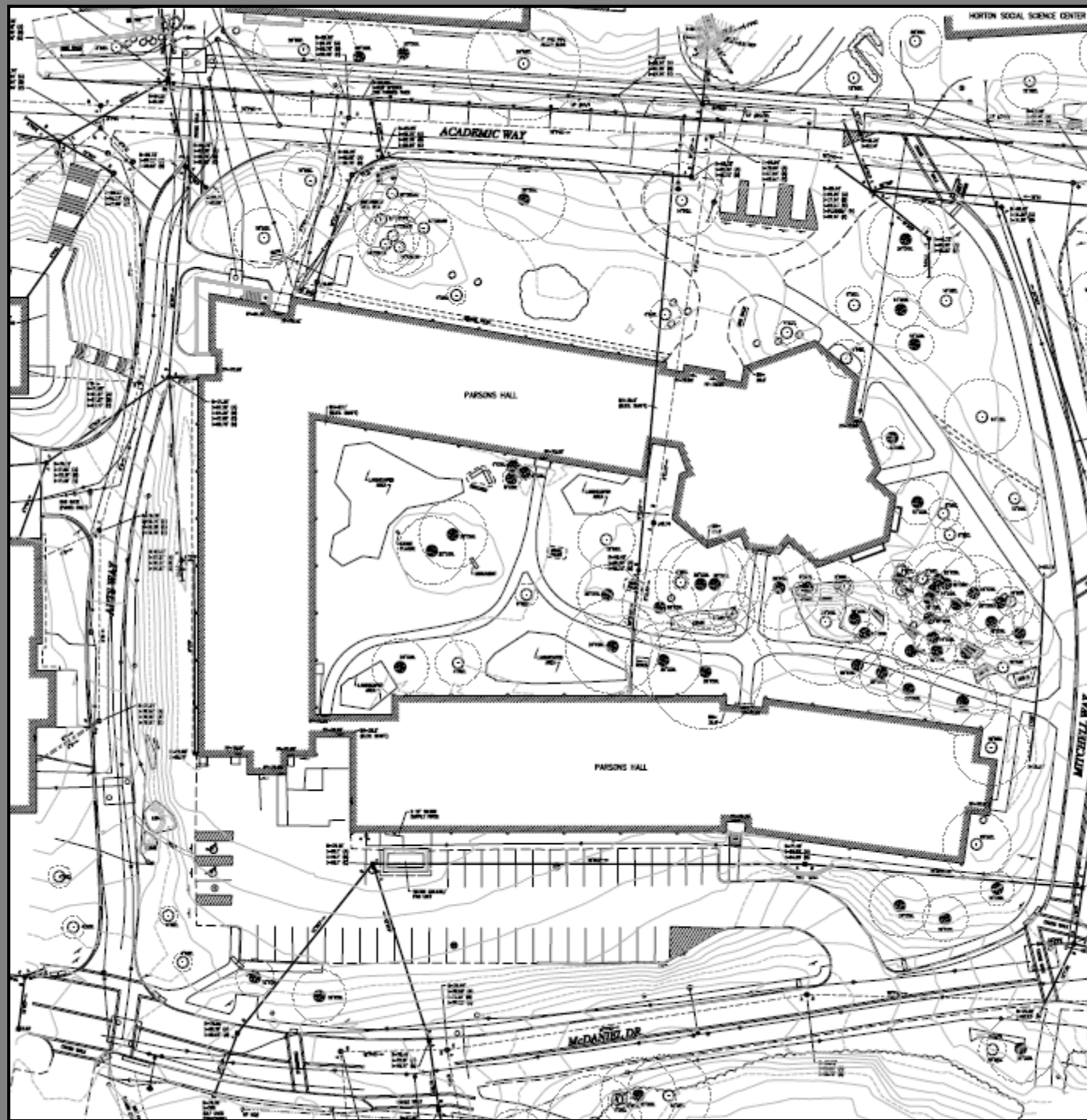
UNIVERSITY *of* NEW HAMPSHIRE

Parsons Hall Renovation Project

Phased Site Utilization Plan

Updated 08-JUN-09

Gilbane



Existing Conditions



UNIVERSITY of NEW HAMPSHIRE

Parsons Hall Renovation Project

May 22, 2009
thru
August 21, 2009

— 6' Portable Construction Fence

Gilbane

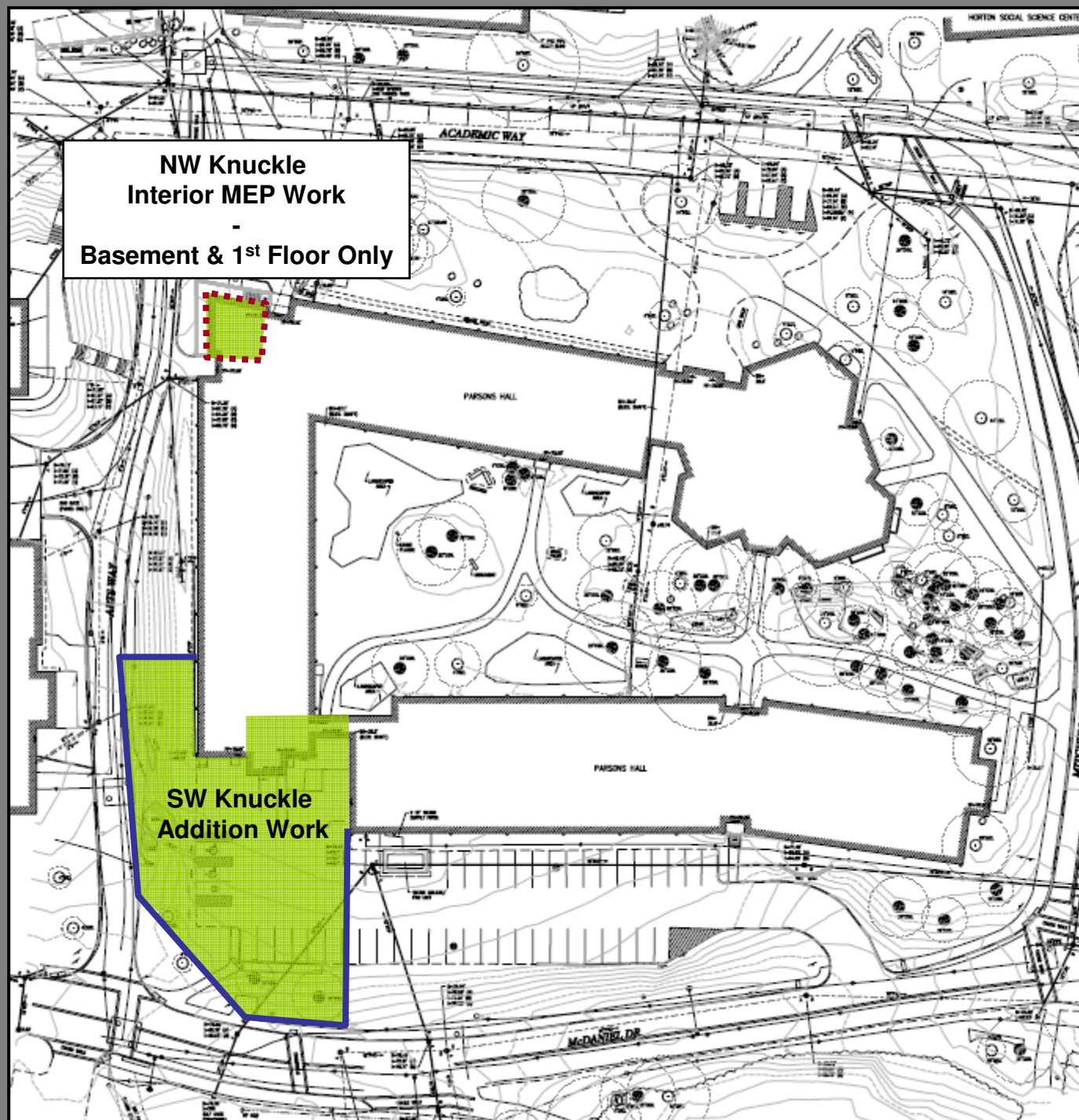


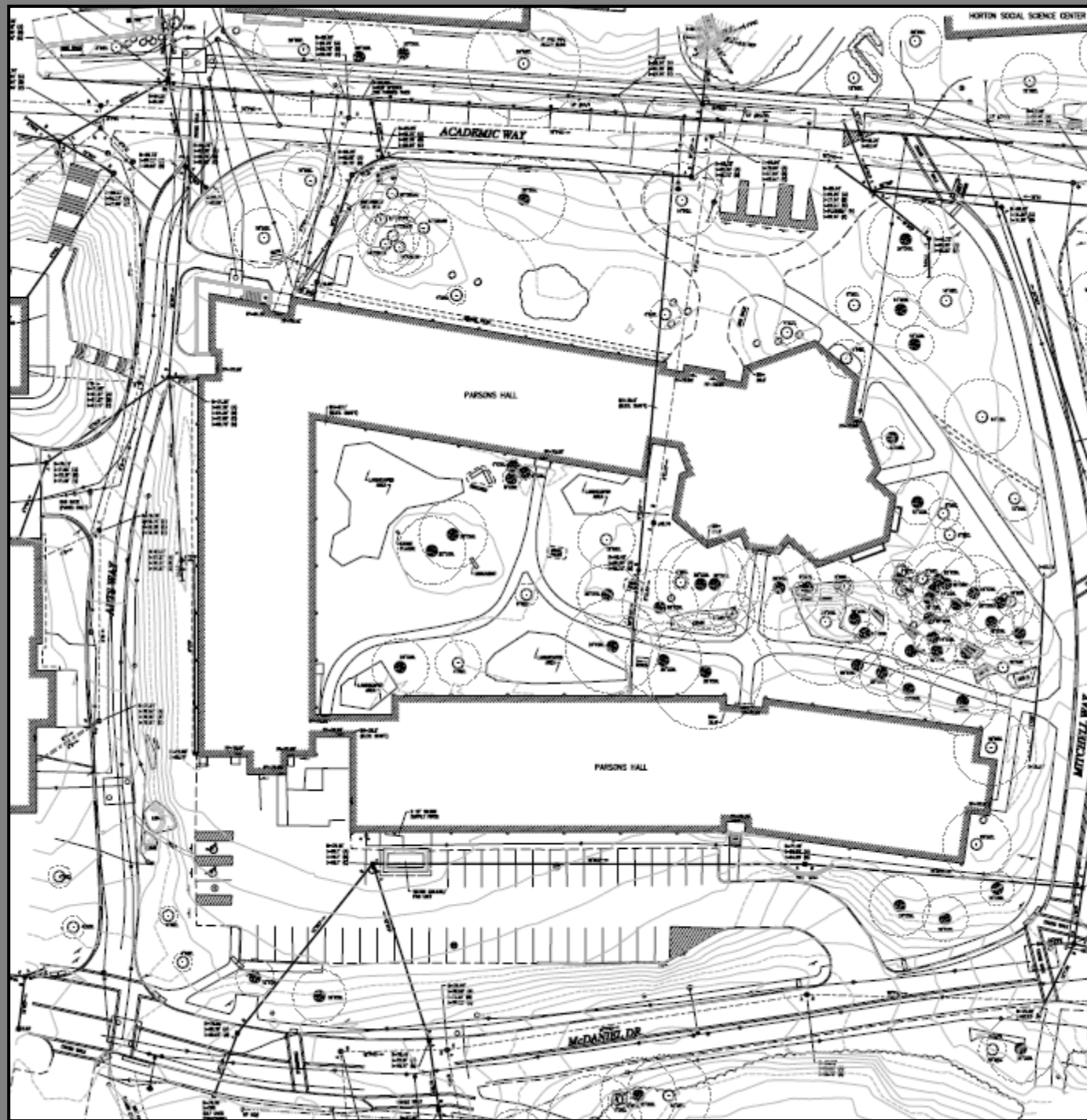
Parsons Hall Renovation Project

August 21, 2009
thru
December 31, 2009

— 6' Construction Fence

- - - Interior Controlled Work Zone





UNIVERSITY of NEW HAMPSHIRE

Parsons Hall Renovation Project

January 1, 2010
thru
May 24, 2010

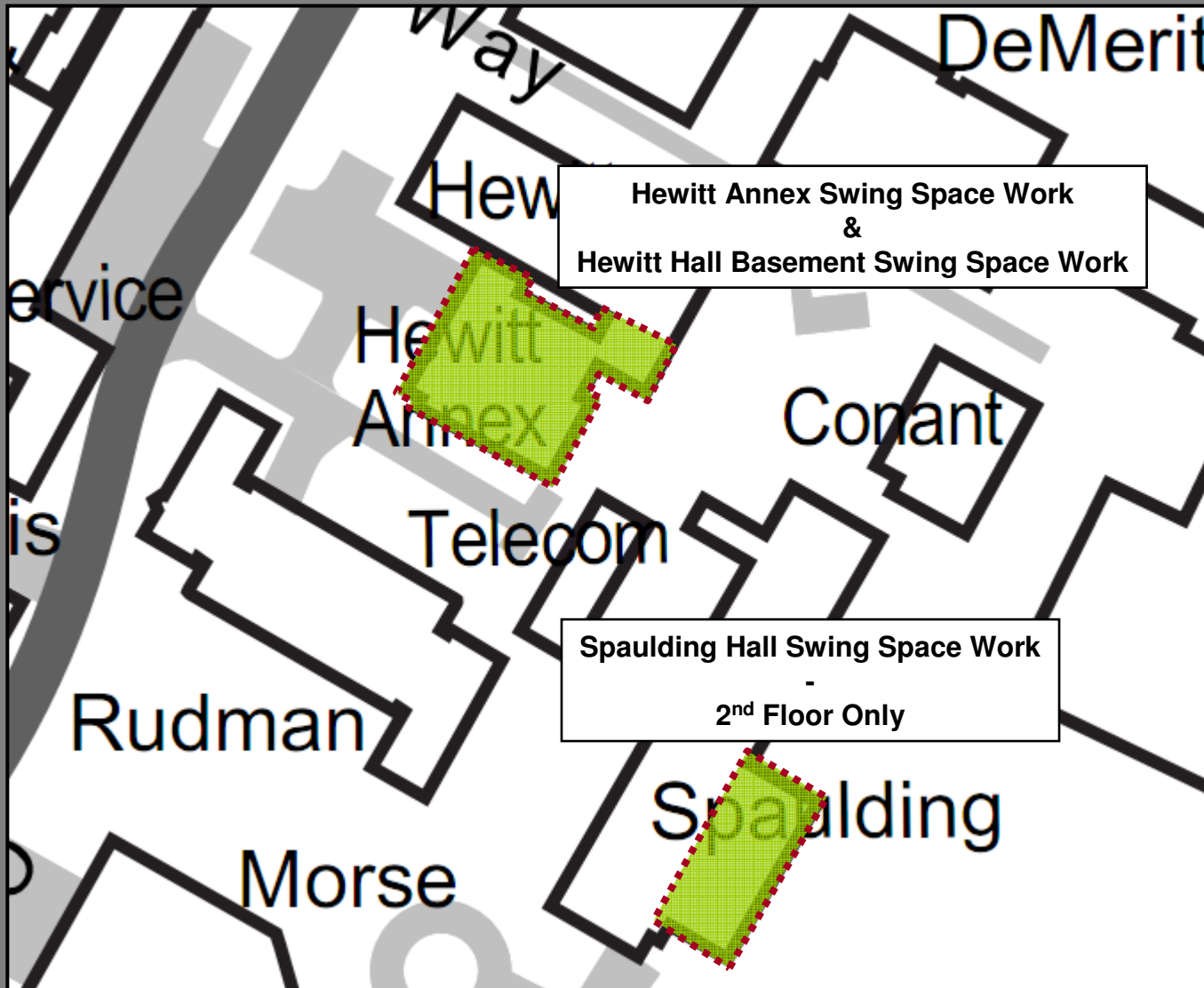
Gilbane



Parsons Hall Renovation Project

January 1, 2010
thru
March 31, 2010

..... Interior Controlled Work Zone



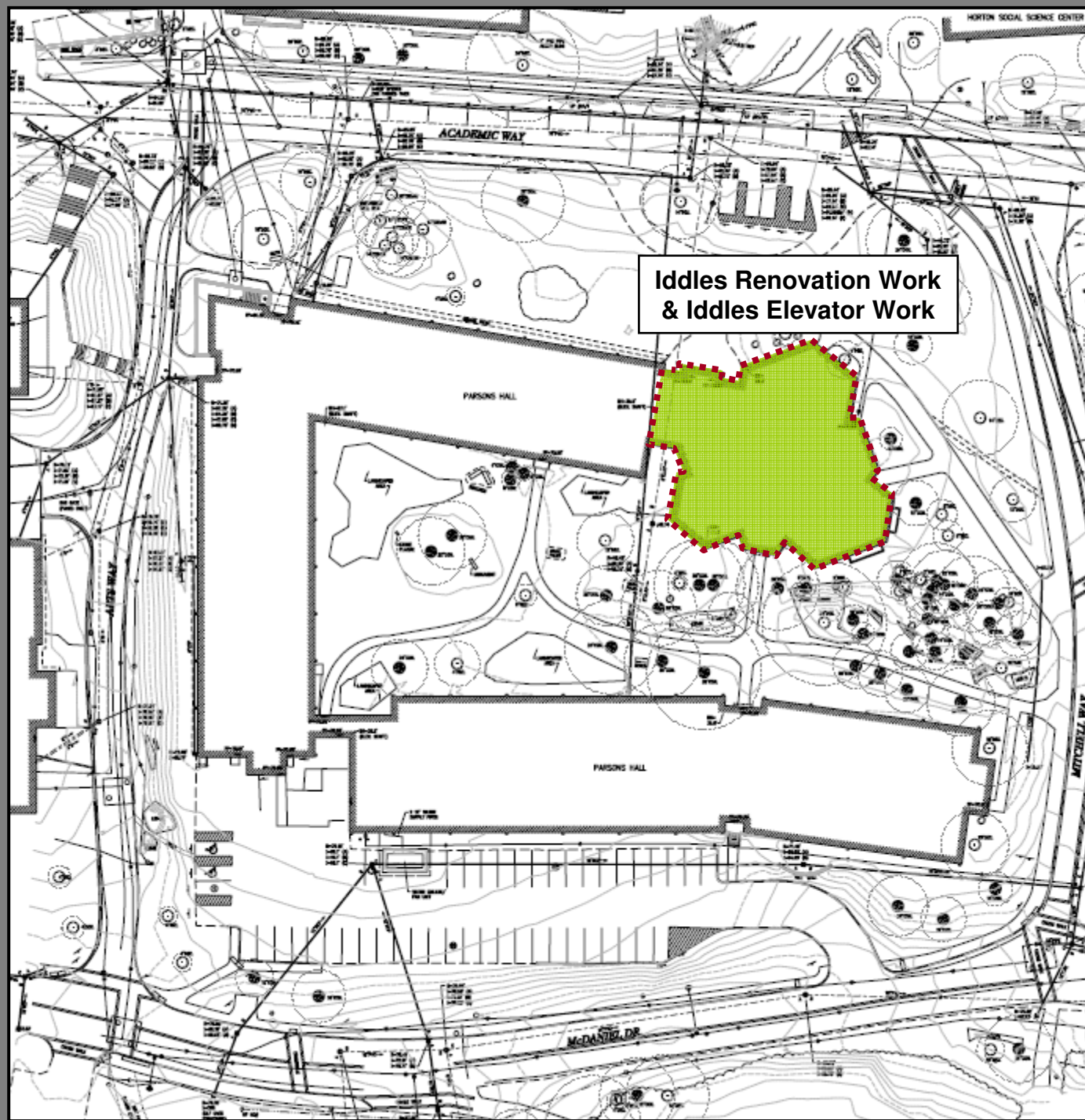


Parsons Hall Renovation Project

May 25, 2010
thru
August 13, 2010

■■■■ Interior Controlled Work Zone

Iddles Renovation Work
& Iddles Elevator Work

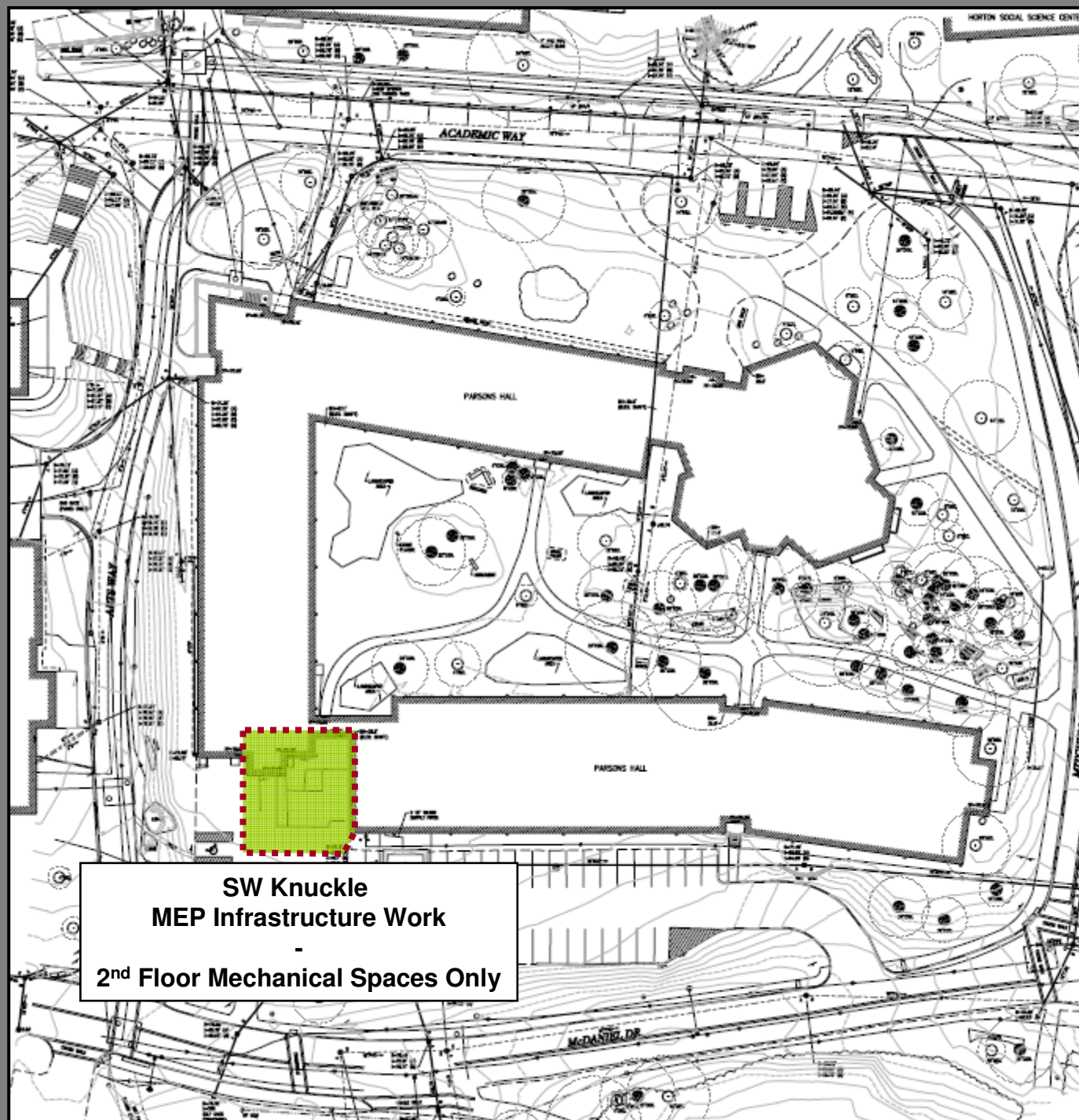




Parsons Hall Renovation Project

August 14, 2010
thru
December 31, 2010

■■■■ Interior Controlled Work Zone

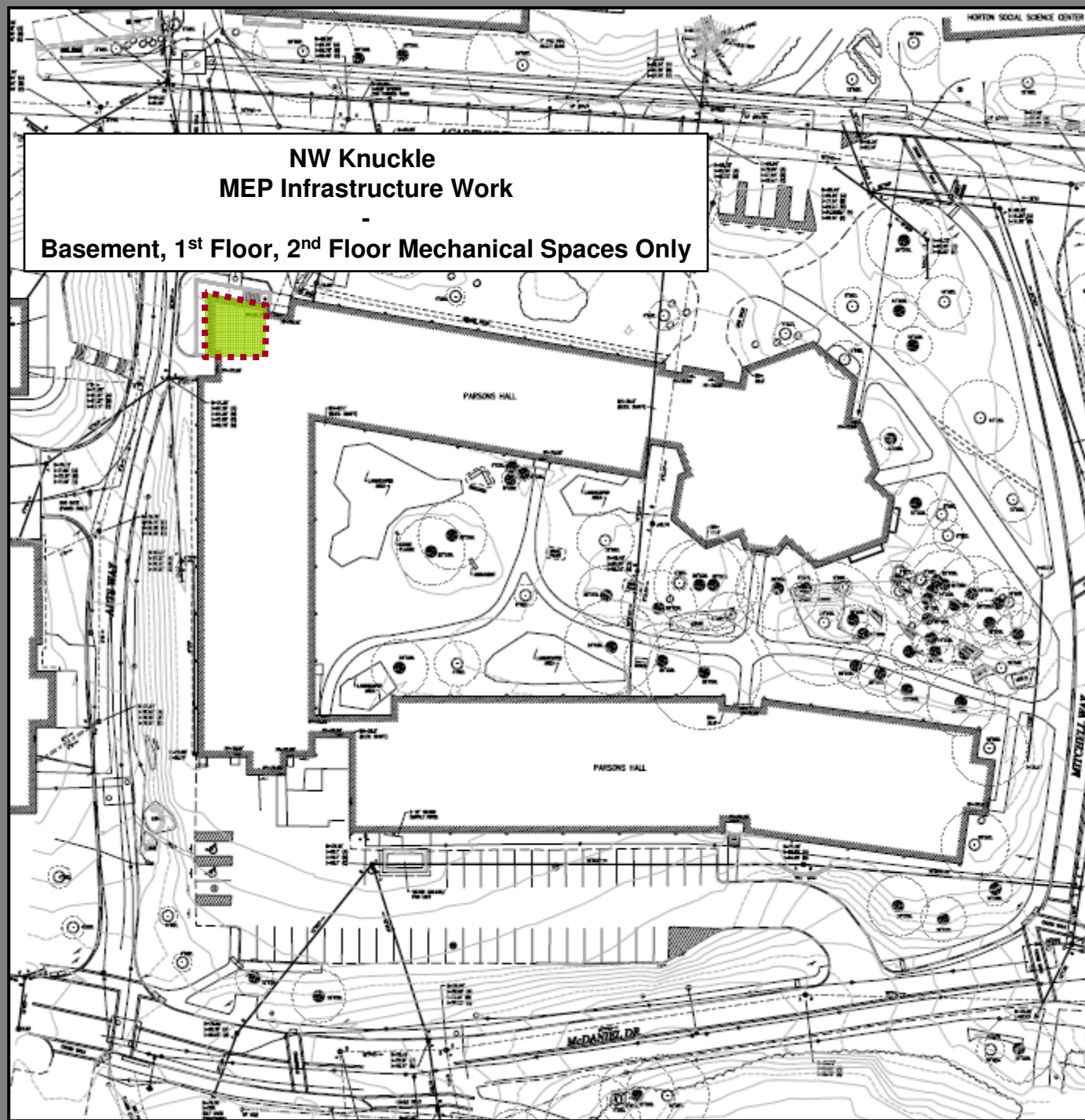


**SW Knuckle
MEP Infrastructure Work
-
2nd Floor Mechanical Spaces Only**



January 1, 2011
thru
April 30, 2011

■■■■ Interior Controlled Work Zone






**NW Knuckle
MEP Infrastructure Work**
-
Basement, 1st Floor, 2nd Floor Mechanical Spaces Only



Parsons Hall Renovation Project

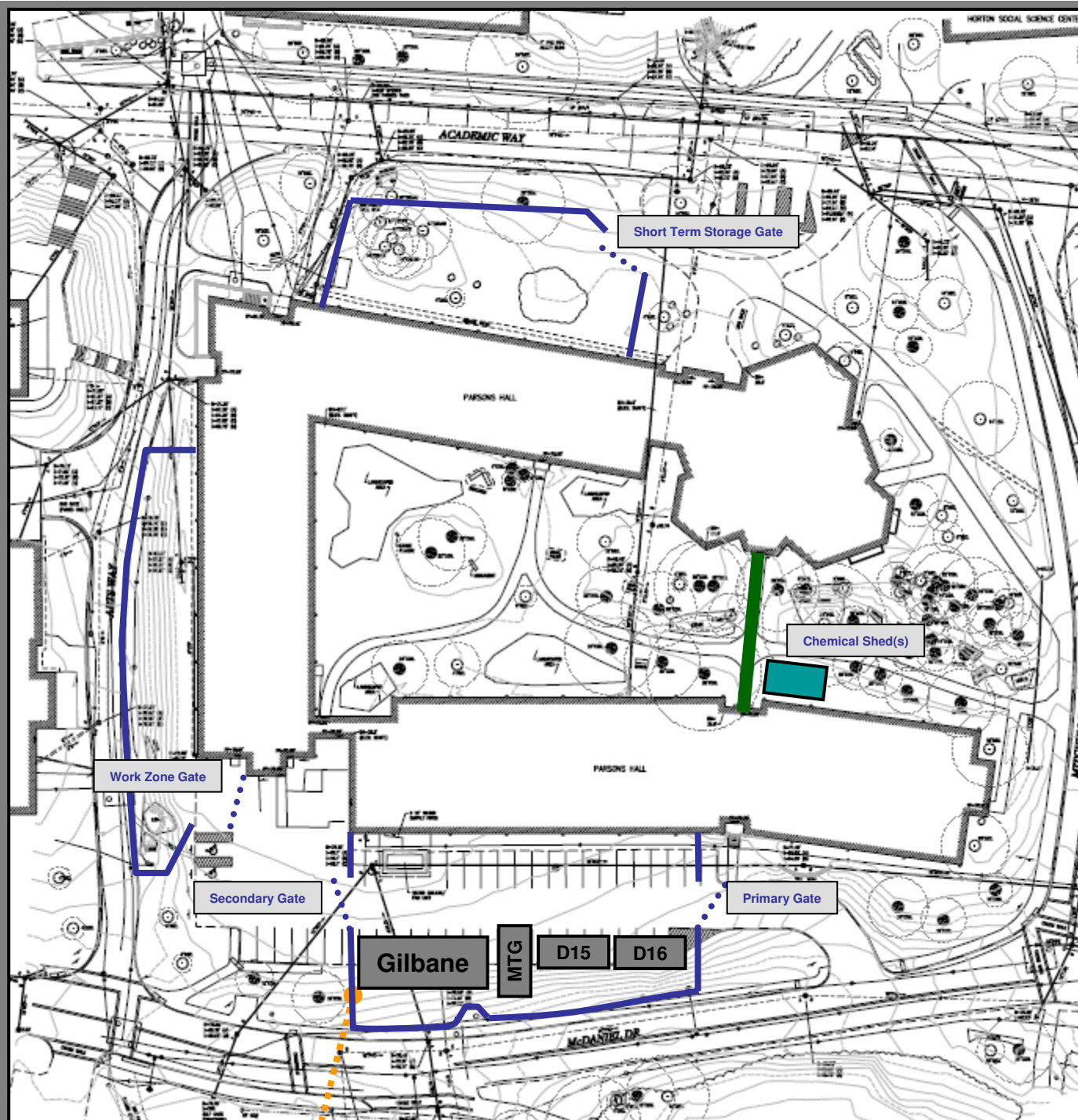
May 1, 2011
thru
May 23, 2011

-  6' Construction Fence
-  OH Temp. Power
-  Interior Controlled Work Zone
-  Protected Walkway

Construction Fence will be generally outfitted with "Wildcat Blue" screen fabric with driven poles. In some areas, it may be necessary to omit the fabric or to utilize temporary stanchions.

Temporary protection of trees within work zones will be employed.

NOT TO SCALE.





Parsons Hall Renovation Project

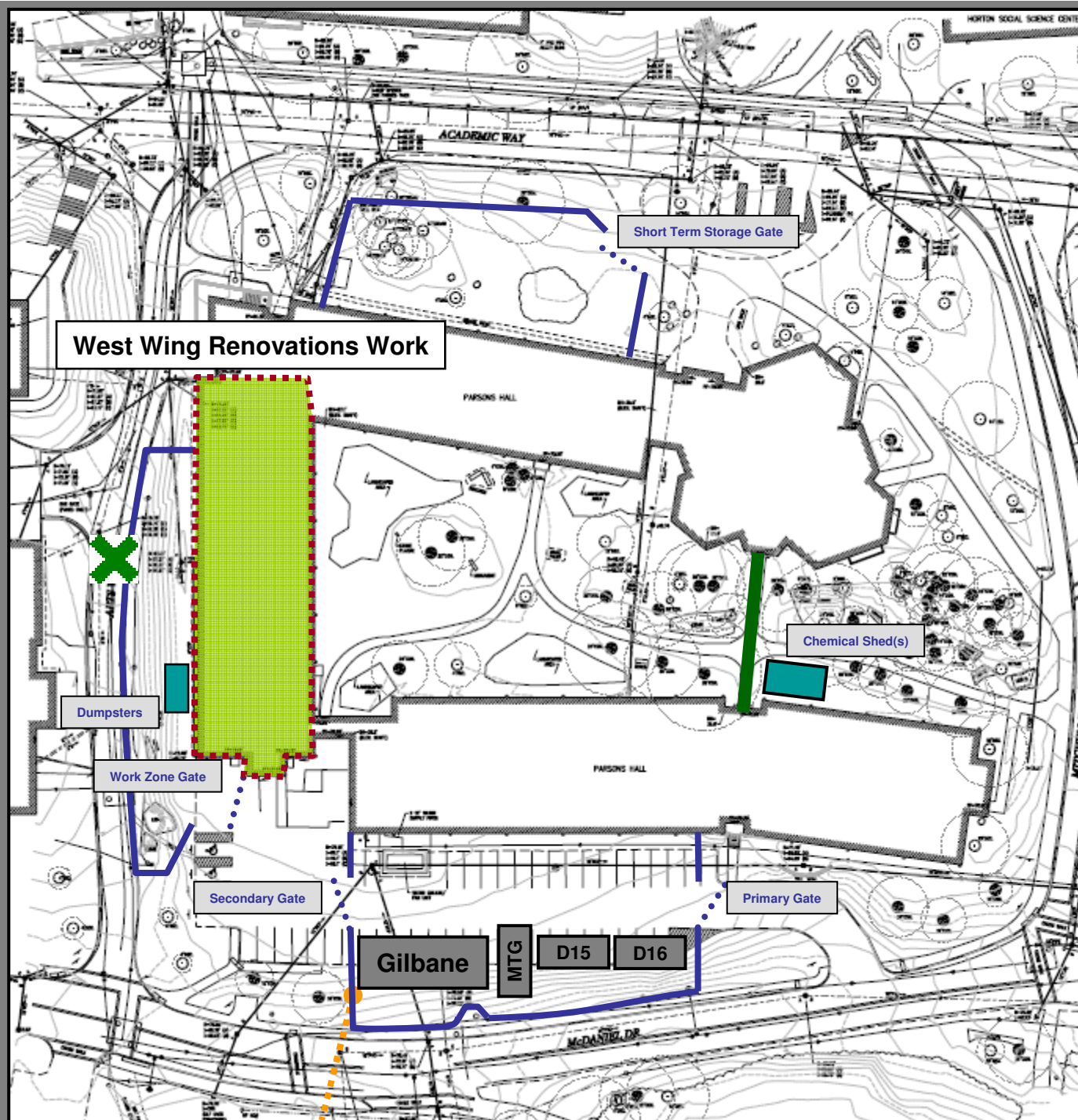
May 24, 2011
thru
December 15, 2011

-  6' Construction Fence
-  OH Temp. Power
-  Interior Controlled Work Zone
-  Protected Walkway
-  Crane Pick Locations (Approximate)

Construction Fence will be generally outfitted with "Wildcat Blue" screen fabric with driven poles. In some areas, it may be necessary to omit the fabric or to utilize temporary stanchions.

Temporary protection of trees within work zones will be employed.

NOT TO SCALE.





Parsons Hall Renovations Project

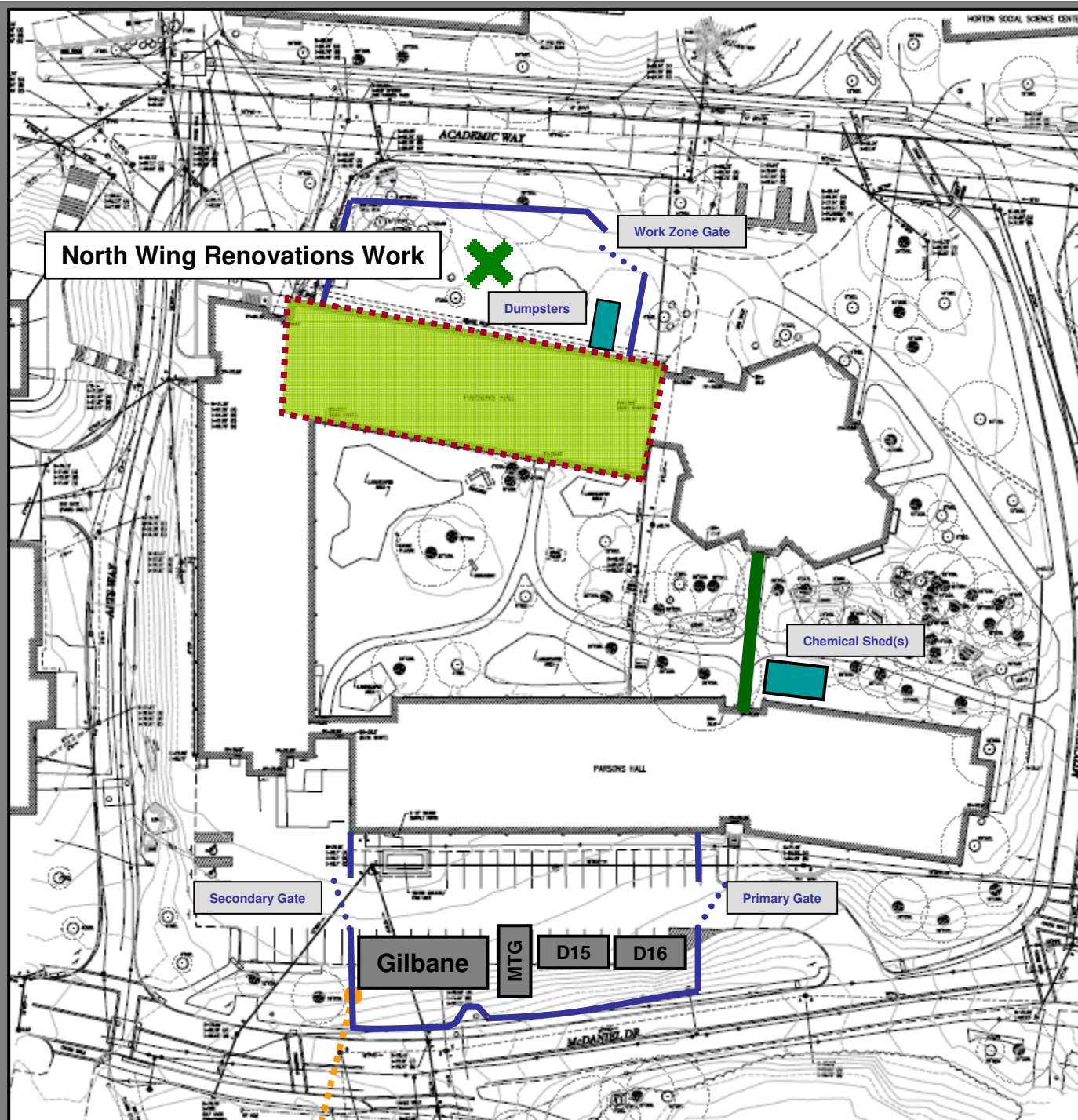
December 15, 2011
thru
June 30, 2012

-  6' Construction Fence
-  OH Temp. Power
-  Interior Controlled Work Zone
-  Protected Walkway
-  Crane Pick Locations (Approximate)

Construction Fence will be generally outfitted with "Wildcat Blue" screen fabric with driven poles. In some areas, it may be necessary to omit the fabric or to utilize temporary stanchions.

Temporary protection of trees within work zones will be employed.

NOT TO SCALE.





Parsons Hall Renovation Project

July 1, 2012
thru
January 15, 2013

— 6' Construction Fence

..... OH Temp. Power

- - - - Interior Controlled Work Zone

— Protected Walkway

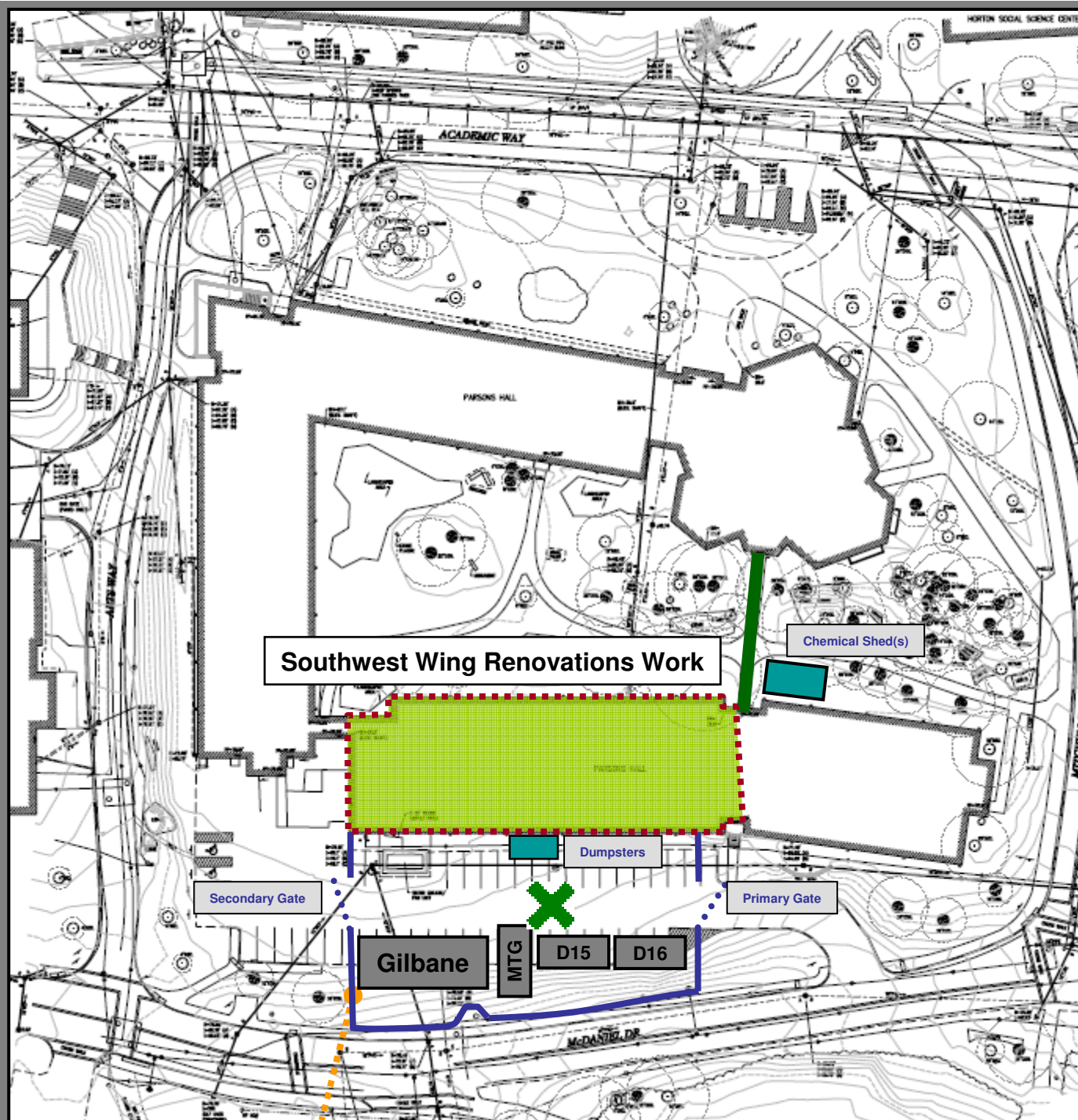


Crane Pick Locations
(Approximate)

Construction Fence will be generally outfitted with “Wildcat Blue” screen fabric with driven poles. In some areas, it may be necessary to omit the fabric or to utilize temporary stanchions.

Temporary protection of trees within work zones will be employed.

NOT TO SCALE.



Southwest Wing Renovations Work

Chemical Shed(s)

Dumpsters

Secondary Gate

Primary Gate

Gilbane

MTG

D15

D16

McDANIEL DR.

ACADEMIC WAY

PARSONS HALL





HORTON SOCIAL SCIENCE CENTER

MITCHELL WAY



Parsons Hall Renovation Project

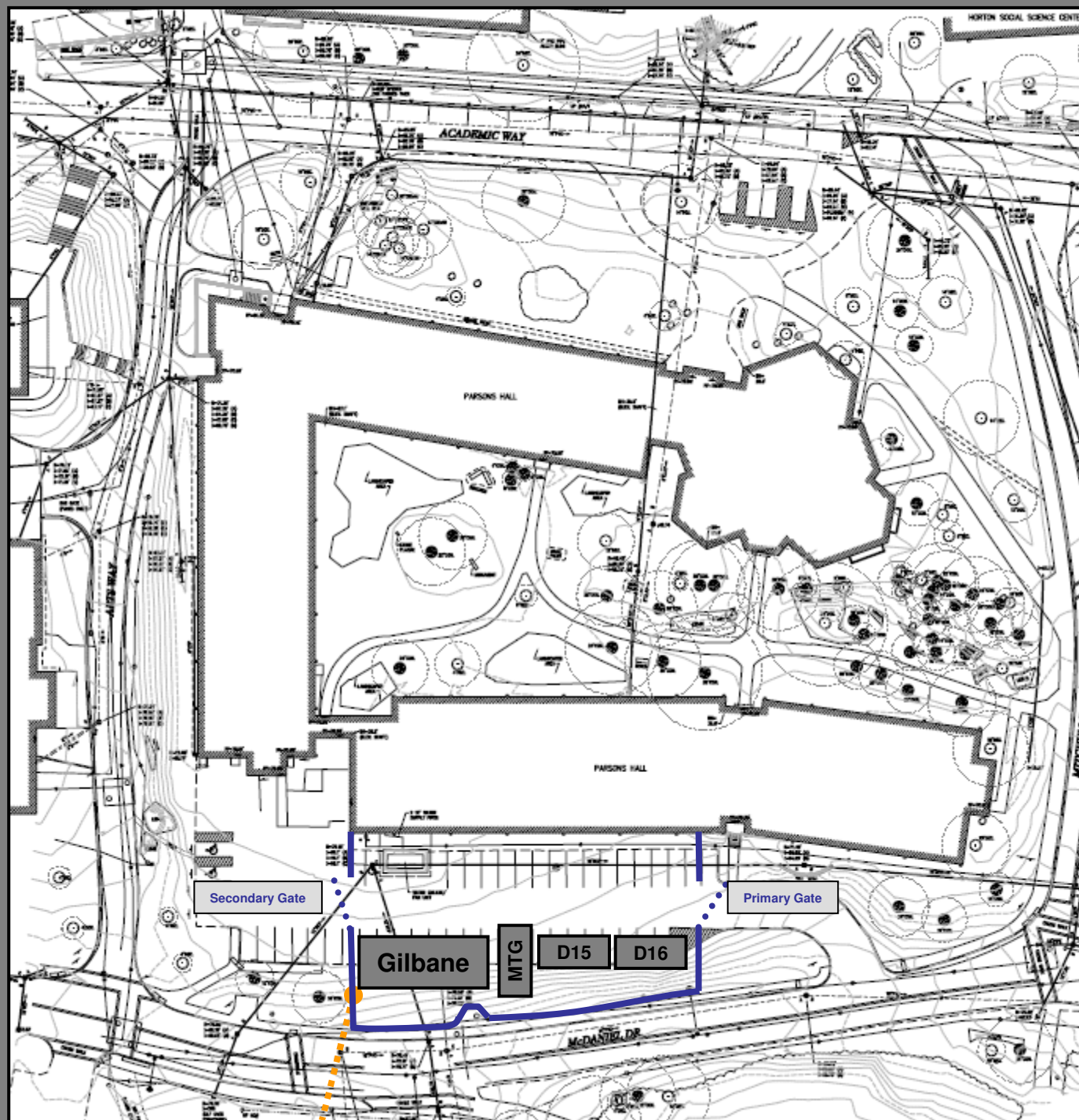
January 15, 2013
thru
May 15, 2013

-  6' Construction Fence
-  OH Temp. Power
-  Interior Controlled Work Zone
-  Protected Walkway

Construction Fence will be generally outfitted with "Wildcat Blue" screen fabric with driven poles. In some areas, it may be necessary to omit the fabric or to utilize temporary stanchions.

Temporary protection of trees within work zones will be employed.

NOT TO SCALE.





Parsons Hall Renovation Project

May 15, 2013
thru
September 15, 2013

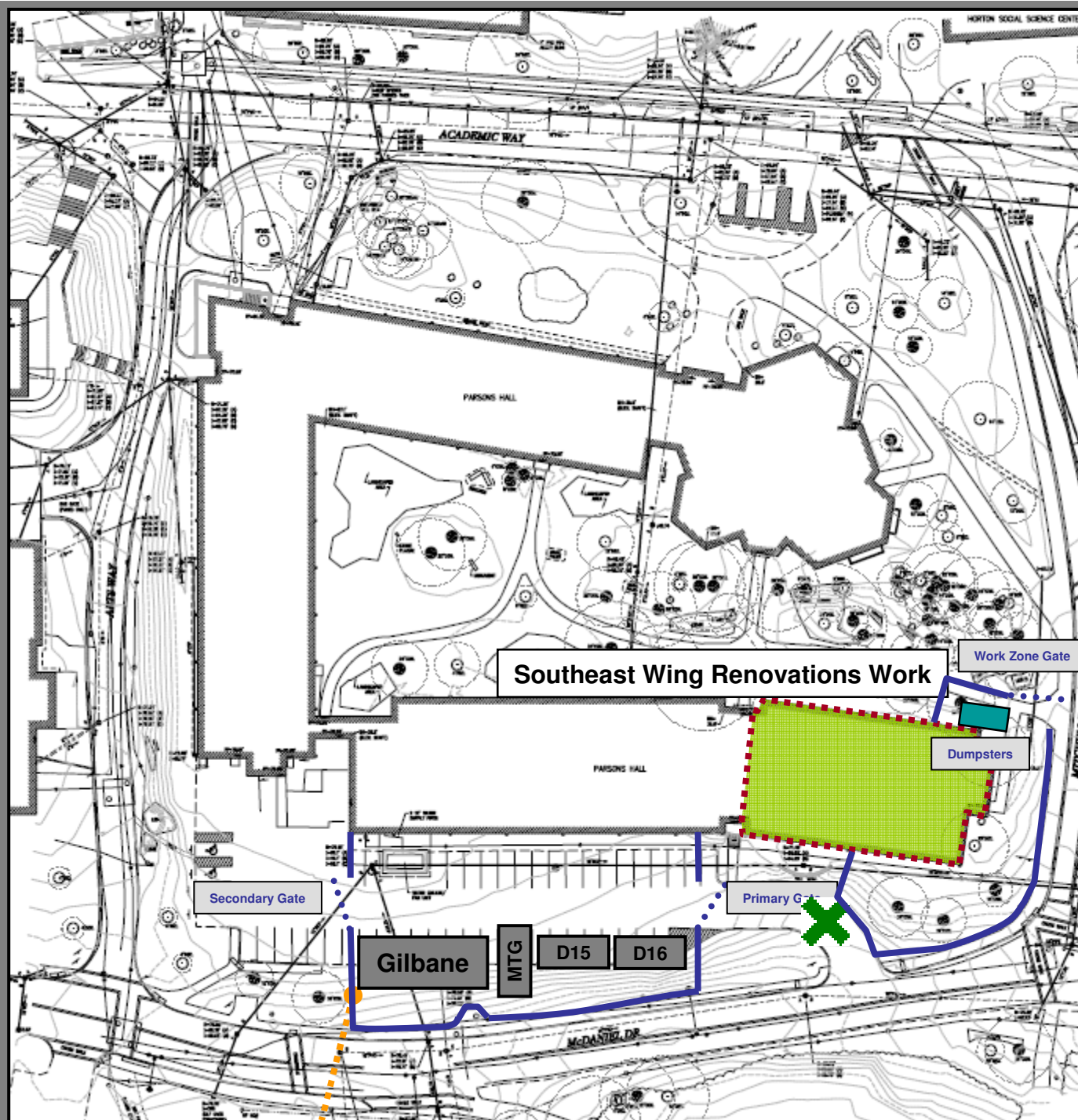
— 6' Construction Fence

..... OH Temp. Power

--- Interior Controlled Work Zone



Crane Pick Locations
(Approximate)



Construction Fence will be generally outfitted with “Wildcat Blue” screen fabric with driven poles. In some areas, it may be necessary to omit the fabric or to utilize temporary stanchions.

Temporary protection of trees within work zones will be employed.

NOT TO SCALE.

